

RV Manual



Fleetwood Ranger 31', Ford E450

Table of Contents

Master Battery Switch
Electric Power Source
Generator Power
AC
Water
Lavatory
Propane
Car Radio
TV / DVD Player
Cable
Backup Camera
Appliances
Fridge
Toilet & Sinks
Exit switches
Moon roofs
Slide Outs
Converting Beds
Blinds
Night Sleep Privacy Shades
Door Locks
Door & Bin Latches
Vehicle Fuel Tank
Bunk Ladder
Auxiliary Shower
Awning
Roadside Assistance
Driving Tips
Smoking
Pets
Returning the RV
Comments

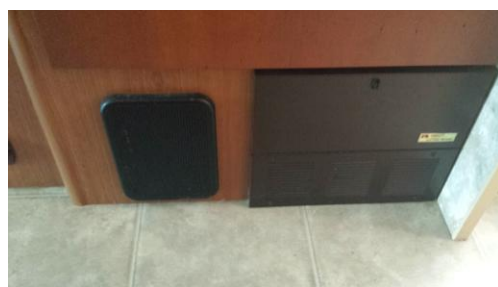
Master Battery Switch

There is a master battery switch for cabin power located to the right above the entrance step labeled Aux Battery. Note: In addition to the generator or city power connection, the master battery switch must be turned on for the AC and refrigerator thermostats to function. It also needs to be on to start the generator. It is intended as a master kill switch for the cabin when remote camping to keep the house battery from being drained when the unit is vacant.



City Electric Power Source

- The shore line hookup is located in the panel at the exterior rear on the RV driver side. The large black cable/plug must be unattached from the internal receptacle and plugged into the park's electric access box. The RV uses 30 amp hookups.
- The generator should be off before plugging in cable to hook up to city/park electric power source or reattaching the cable to the outlet inside the RV bin. Cable must be plugged in to the RV outlet to complete the circuit for generator power to the RV.
- An adapter for use in powering to a conventional 110v outlet is in the rear access panel. I do not recommend using this for long term or heavy use. It is primarily for lighting, refrigerator, and charging the house batteries.
- Circuit Panel is located on the side of the master bed. Extra fuses are onboard in the toolbox. There is also a master circuit switch located directly on the generator under the access panel, to the right side of the start button.



Generator Power

How to start

- 1) Start button – located above side entry stairwell
- 2) In the event of a dead generator battery, there is a battery hot swap button (emergency start) which allows you to start the generator from the vehicle battery. It is located to the left of the steering wheel. Start the vehicle, push the button, and then re-try the generator start button. You can then turn off the vehicle.

Note: AC should be off when starting, to minimize power draw on warm-up.

The generator battery is located under the side entry door step.

Fuel tank level - at $\frac{1}{4}$ tank, fuel supply for generator ends, as a safety feature to prevent you from depleting the RV fuel tank and then not being able to drive to a gas station.



The generator is located in an exterior bin behind the driver side door. It has a green service panel that can be opened to check oil level, access secondary start button, and check master breaker.. By design, the generator will turn itself off if the oil is low.

The generator has a master breaker located directly on it, underneath the access panel, and to the right of the start button. It looks like a black light switch. Picture below shows the start assembly removed in order to better see the location of the breaker switch.

If you experience electrical difficulty, such as most of the power is on but the AC and microwave will not function, this breaker should be checked.



AC

The Thermostat is located on the wall beside the microwave. There is a time delay built in for compressor to kick in. Please turn off when shutting down generator or disconnecting from park electric so that it is off for future startup. If AC does not come on, check generator master circuit breaker. Round AC vents are located throughout the cabin so that you can direct the airflow. Heat ducts are located on the floor and along the bottom of cabinetry.



Water

- The water hookup for city water is located on the exterior, rear driver side of RV. It is the hose attachment to the left. The right hose attachment is for flushing lav tanks. Use the hose supplied with the RV to hook up to a city water source.

-If you are not hooked up to a city water source, the water pump (on test panel beside entry step) needs to be on, for sinks or toilet, to provide water pressure. You also need water in the onboard water tank. This step is not necessary when hose attached to city water source. The fill valve for the onboard tank is located inside a small bin to the right of the entry door. It is a gravity fill system.

-Water level monitor for onboard freshwater tank, is located on the test panel at entry steps.

-Water heater needs to be turned on 5 minutes prior to use. It is propane heated. I recommend turning it off after needed use. On/Off switch located on the test panel. Propane gas level monitor is also located on the test panel..



Lavatory

Dump hose is in the vehicle bumper which can be accessed by pulling off the cap on the side of bumper. The adapter fitting, lavatory hookup pipes and dump valves are located in the exterior driver side lav storage bin. Cap must be on during transit or risk \$10K fine.

Dump lines may be connected to park facilities when camped, or some parks have a dump station which you must drive up to upon exiting / checking out. You **must** dump before returning RV.

Holding tank levels- can be checked via the test panel at entry step. There are two tanks a) grey water which comes from sink use and b) black water tank which is from toilet.

Lavatory plumbing has 2 valves to alternate which tank is dumped. It is recommended to dump black water (larger outlet line) first, then close the valve, and then follow by dumping grey water tank (smaller outlet) last. Valves should remain closed during camping, until you are ready to perform a dump.

Tip: Some rest stop facilities have free dump stations that you can usually be located just before the ramp back onto the highway. The FAQ page on our website CCCRV.com has a link for Sanidumps to search for dump facilities closest to your location.



Propane

The propane tank is located in a marked exterior bin on the passenger side of the RV just behind passenger door. There is a master shut off valve which is closed during the filling process as a safety measure. If you have no propane flowing to the stove or hot water heater, it may be turned off at the source.

Tank level can be checked on the test panel, located at entry step.



Car Radio / CD Player

The vehicle radio has a power switch located to the left of the steering wheel, to select power source from either the house battery or conventional setting from the vehicle battery.



TV/DVD Player

The TV channels need to be set by using the remote control to access the menu feature, to perform a channel scan, either through the cable when hooked up at a park, or by scanning thru the air using the rooftop digital antenna to pick up available channels in your vicinity.

The TV can be rotated outwards by pressing the switch to the right, over the input panel. Input control panel for electronics is also located to the right of the TV. DVD player is located below the TV.



There is also a radio located in an exterior bin on the rear passenger side. Cable and power outlets for a portable TV are adjacent to the radio.



Cable

A park hookup is located to the left of the water hookups at the rear driver side of the RV. Once a coaxial cable is attached to the RV and the park cable source, cable TV is available throughout the RV. You must run a channel scan on the TVs to assign channels.



Backup camera

The backup camera automatically comes on when the vehicle is put in reverse. When in drive, the power button must be depressed to turn it on or off. Always use a spotter when backing up, as the cameras cannot capture all possible obstacles including tree branches above the line of site.



Appliances

Stove / Oven – uses propane gas and is lit using a camp lighter. Valve on exterior LP tank must be open for gas flow. Microwave operates as a standard electric device



Fridge

The fridge has a setting for electric, propane, or auto adjust. The gas mode is for use when the vehicle is in a remote setting. For park electric hookup or generator use, keep mode set on Auto only.

Note: Fridge must be level to operate properly. If you are parked on a steep incline, it will not function well.

Note: The first time an RV fridge is powered on after having set several days, it may take up to 3-4 hours to cool down initially. This is normal for this type of system. Once cool, it can be turned on and off and still maintain proper cooling levels.



Toilet - Sinks

-These function identical to marine facilities and operate basically similar to home use. Pump can be turned on when not hooked to park water source to provide usage pressure.

- Always use RV/Marine TP or single ply TP, as the septic systems are more sensitive than home systems. You do not need to use any of the lav additive stowed in the bathroom but may if necessary.



Exit Switches

Switches are located at the left of the entry step include porch light, interior light, and entry step lock.

Stair Lock switch – keeps outer step locked open when the vehicle is parked, so that they do not retract every time the camper door is opened or closed. Stairs automatically retract when vehicle is started.



Moon roof

Please don't open the moonroofs during travel. They are not designed to be open while the vehicle is in motion on the highway.

Slideouts

To operate the slide-outs, the vehicle parking brake must be on and the engine running. The control panel is located on the side of the cabinet at the entry door. Slides must be in before moving the vehicle.



Converting Beds

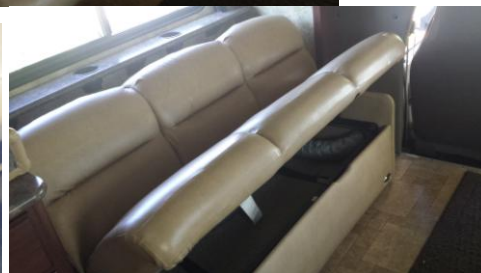
Dining Table

The dining table can be lowered and cushions moved, to form a bed. To convert, move the lever under the table to unlock it. Push the table downwards until it rests on the wood lip at the front side of each bench, so that the table fills the gap between the two seat benches. Adjust the seat cushions so that they form the mattress for the converted bed.



Couch bed

To convert, remove the arm rests. Then slide the black lever at the front edge of the couch, which allows the cushion to be lifted, jackknifing the couch into a bed.



Bunk beds

The rear dinette converts into two bunk beds.

The upper bed is released by depressing the black latch at the top center of the fixture. The frame will lower, allowing the mattress to unfold.

The lower bunk is transformed by lifting the table to unhinge it from the wall, and then using the table to form the center base for the bed. The couch seats bases are removed and lowered to form each end of the bunk, with the cushions being placed to form the mattress.



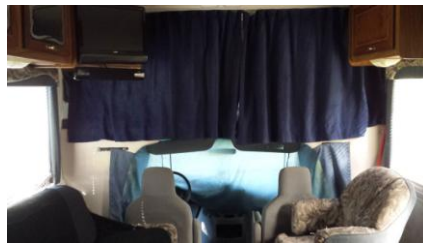
Blinds

Blinds can be closed, opened, or opened with a daytime privacy shade. Please do not untie the tension strings located along the sides of the blind. They are required to be tightly mounted to the wall for the blinds to function properly.



Privacy Curtains

Sleeping curtains can be drawn to enclose the sleeping compartment above the front cab. Also on board is a privacy shade for nighttime use, to ensure no one can see inside the RV through the front windshield. It is attached with snaps to either side of the bunk.



Door locks

- The inside of the camper door has a red and a white locking switch. The red switch locks the handles to the door. It can be opened from the outside with the key, or from the inside red switch. The upper white switch is an additional security bolt for in- transit travel with children, or to provide additional security. It utilizes an internal bolt to secure the door and will not allow the door to open until unlocked. It can also be opened from the outside with a key. Each lock on the exterior of the camper door utilizes a separate brass key (i.e. there are two keys for the door).



Door & Bin Latches

The camper door can be latched to remain open. This especially useful for windy days, or when used in conjunction with the screen door.



Most of the bins have bullet latches (see above right) to assist in holding the compartment hatches open when loading / unloading the bins.

The shower door has a latch which must remain secured during transit to keep damage from occurring to the doors.

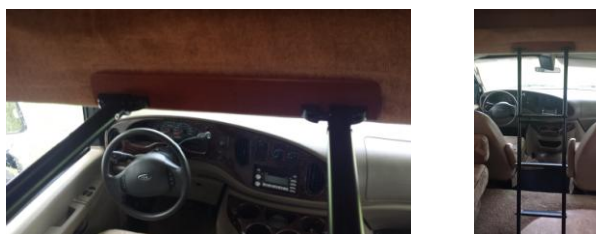
Vehicle Fuel Tank

Fuel tank for the RV is located on the rear driver side behind rear tire well. The RV takes regular unleaded gas.



Bunk Ladder

There is a ladder for use with the upper sleeping bunk. To attach it, raise it horizontally at the mounting latch and then lower it into place.



Auxiliary Shower

On the exterior driver side of the RV, is an auxiliary shower which can be used to rinse off before entering the RV. If the RV is hooked up to a park water source, it is functional. If you are not hooked up to a park water source, you need water in the fresh water onboard tank, and the water pump turned on to provide water pressure.



Awning

This can be opened when parked and remaining stationary. See owner for demonstration. There is an awning metal rod for use in unlocking the security latch located at top of roller. The rod is in one of the exterior bins.

To open, unlatch the gray travel clips from the posts. Loosen the black knob at the back of each post. This is important to allow the inner arm to travel freely as the awning is opened and closed. Using the metal rod located in the rear bin, hook the awning directional lever which is located on the front end of the awning tube. Pull it so that it rotates downward a half turn, in the direction of the down arrow. Using the awning rod, hook the black canvas strap at the center of the awning, and pull the awning open. Then slide the inside arm upwards until it clicks into place to form an A frame. The black handled levers on the main arm can be used to extend the length of the arm.



To close the awning: loosen the black knob, depress the grey tab at the upper end of each arm to release the inner arm. Slide the inner arm down towards the RV. Turn the directional lever on the end of the awning tube to the up arrow position. Using the canvas strap and rod, allow the awning to roll itself up. Make sure the main arm is properly seated against the roof of the RV. Tighten the black knobs and close the gray travel latches on the sides of each post.

Additionally, the bottoms of the posts can be detached from the RV using the quick-disconnect clamps at the base of the posts, after extending the awning. This allows for a squared frame awning.

Roadside Assistance

The RV has a spare tire in the event of a flat. By design, the RV does not include a jack due to the weight of the vehicle. During normal daylight hours, road rangers are along the main highways and have the capability to change the tire, usually for free. Otherwise, please call us to have a mobile service dispatched to your location to change the tire, jumpstart the vehicle or have it towed. If you should undertake any minor issues, please have either my name and/or the vehicle info listed on the receipt, so that I can arrange reimbursement.

Driving Tips

- Making Turns – Pull up, to account for length of RV, when rounding corners
- Dips and Steep Swells – Take at an angle so you do not bottom out the rear bumper
- Use a spotter when backing up
- Mirrors – objects are closer than they appear
- A SunPass is installed on the windshield. You will be provided a copy of the charges upon your return for reimbursement.

Note: Wal-Mart has a policy allowing RV drivers to park overnight in Wal-Mart parking lots, should you find yourself too tired to safely proceed driving.

The RV ladder at the rear of the vehicle is for servicing the roof and appliances only. Please no unauthorized use, as the roof is a rubber membrane easily damaged.

Smoking

Please no smoking in the RV. This is a family vehicle and I would greatly appreciate it, if you consider that the RV is other family's bedroom when they vacation. Thank you.

Pets

Please no pets on board. RV is for human accommodations only.

Returning the RV

- Please fill gas to the level when you picked it up. I will charge for replacement gas.
- You must dump lav-septic tanks before returning. I will charge a \$50 fee to do so.
- You do not need to fill the internal water tank prior to return and may wish to travel with minimal amount for better gas mileage. ¼ tank is adequate for in transit use.
- Please remove any garbage and food items from fridge/freezer.
- You are welcome to use the supplies on board such as charcoal, firewood, plastic cups, paper products, ect. If you use them up, please be sure to replace them for the next person to use the RV. Propane refill locations are not always easily accessible, so I would be happy to refill it at a fee of \$10 plus actual cost of LP.
- Please exercise a “take a penny, leave a penny” approach towards misc supplies.

Comments:

I strive to ensure that everything on the RV is in good condition and functioning as it should. Like a boat, constant maintenance is required to fix all the little things that occasionally need replacing. It is not always easy to know what needs to be addressed, when I am not personally using the RV. Would you please take a moment to make notes of anything you noticed that needs attention, is broken, or ceased to function, from normal wear and tear? That way, I can insure that the next person has a positive experience, as well. You can simply leave this page onboard with your comments.

Thank you.

Customer Testimonials

If you had a great experience or took some great pictures that you would like to share with us, I would be happy to post them to our website. Simply email me your pics and any comments, and I will include them in the next scheduled web page update. Thanks