



SCA

TYPICAL APPLICATIONS	Ironing systems
FUNCTIONS	■ SPST momentary
CYCLE No.	50.000
CUT OUT	19x13 mm
AMBIENT TEMPERATURE	120 °C
GWT	850 °C
GWT NO FLAME (<2sec)	750 °C on demand



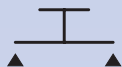
- 0
- 5
- 8
- 4

?

?

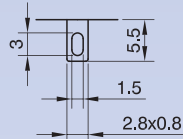


FUNCTION

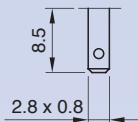


TERMINAL

0



4



RATING

2

2 (1) A / 250 VAC
1 (0.5) A / 250 VAC - 5E4
 T120 °C
EN 61058

2 A - 125 / 250 VAC
 T65 °C
 UL 1054
 CSA C22.2

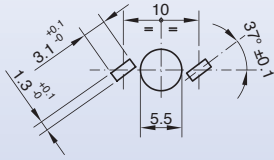
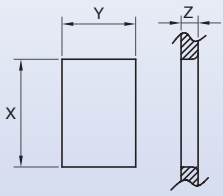
4

6 (4) A / 250 VAC
5 (2) A / 250V - 5E4
 T120 °C
EN 61058

6

10 (4) A / 250 VAC
5 (2) A / 250V - 5E4
 T120 °C
EN 61058

6 A - 125 / 250 VAC
 1/6 HP - 250 VAC
 1/8 HP - 125 VAC
 T65 °C
 UL 1054
 CSA C22.2



Z	Y	X
0,70 ... 1,25	13,0 ±0,1	19,0 ±0,1
1,25 ... 2,0	13,0 ±0,1	19,3 ±0,2
2,0 ... 3,0	13,0 ±0,1	19,6 ±0,2

0	5	8	4	TERMINAL	RATING	DRAWING	BODY COLOUR	BUTTON COLOUR	MARKING COLOUR	MARKING	0	0
---	---	---	---	----------	--------	---------	-------------	---------------	----------------	---------	---	---

?	?	?	?	?	?	?	?	?	?	?	0	0
---	---	---	---	---	---	---	---	---	---	---	---	---

DRAWING

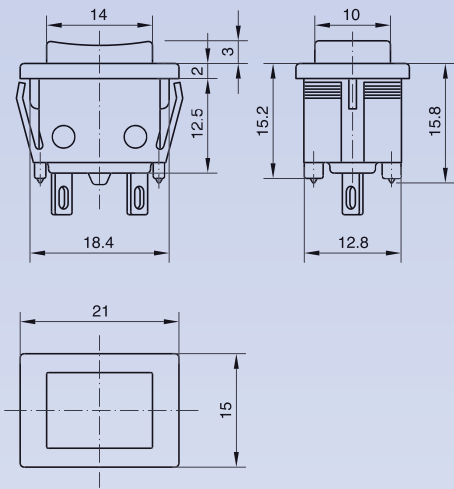
BODY COLOUR

BUTTON COLOUR

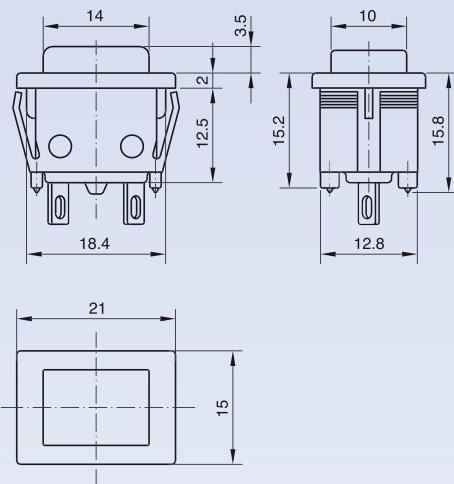
MARKING COLOUR

MARKING

A Mat



B Gloss



- 1** black
- 2** white
- X** custom

- 1** black
- 2** white
- X** custom

- 0** none
- 1** black
- 2** white
- X** custom

- 0**
- X**