

Additionally Resources Centres (ARCs) & Designated Specialist Provision in Primary Schools (DSPs)

A number of mainstream primary schools provide additional resources places for children with particular needs. (See pages 15 – 19 of main text)

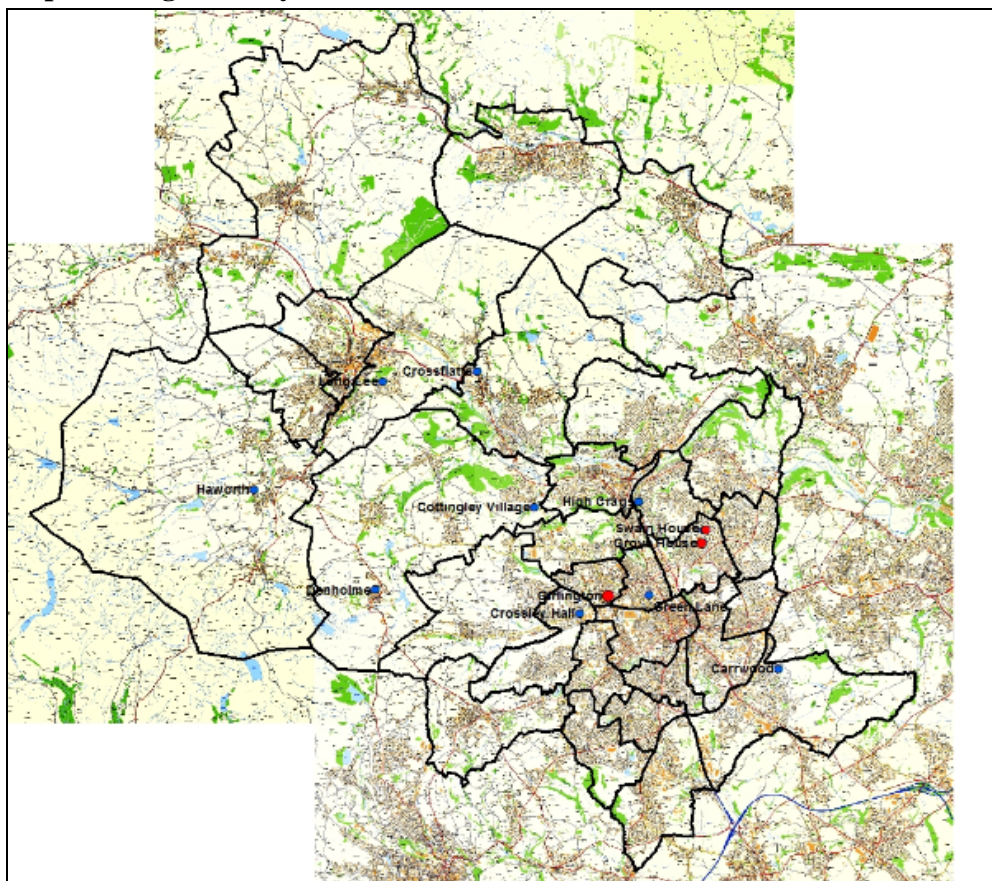
ARCs:

School	School Type	Multi Academy Trust (MAT)	Designation	Funded Places
Girlington	Community	-	HI	17
Grove House	Community	-	VI	12
Swain House	Community	-	HI	20

DSPs:

School	School Type	Multi Academy Trust (MAT)	Designation	Funded Places
Carrwood Primary	Community	-	ASD	4
Cottingley Village	Community	-	SEMH	10
Crossflatts	Community	-	ASD	13
Crossley Hall	Community	-	SLCN	12
Denholme	Academy	Nurture	ASD	8
Green Lane	Academy	Priestley	SLCN	12
Haworth	Academy	Bronte	ASD	6
High Craggs	Academy	Star Academies	SLCN	6
Long Lee	Community	-	SEMH	10

Map showing Primary ARCs and DSPs



Historic Numbers of primary ARCs and DSPs

The table below show the number of children registered in primary mainstream schools with ARCs and DSPs based on information provided by schools on the January DfE census.

ARCs

Year	Total places	Number in ARCS	Surplus places	% Surplus places
2015/16	49	33	16	32.7%
2016/17	49	44	5	10.2%
2017/18	49	46	3	6.1%

Full data for previous years by pupil not available

DSPs

Year	Total places	Number in DSPs	Surplus places	% Surplus places
2015/16	49	33	16	32.7%
2016/17	49	48	1	2.0%
2017/18	81	56	25	30.9%

Full data for previous years by pupil not available

- DSP at Cottingley Village was established in April 2018 with 10 places.
- DSP at Crossley Hall was established in April 2018 with 12 places.
- DSP at Long Lee was established in April 2018 with 10 places.

Actions taken to provide primary school ARC and DSP places for September 2018

Due to the overall growing demand for specialist provision within mainstream schools across the District and the number of children not placed, a full consultation was undertaken to increase the number of places available in mainstream schools beginning in April 2018.

The increase in places at each of the special schools was agreed by the Council's Executive Committee at their meeting in April 2018, and by the Multi Academy Trusts with the agreement of the RSC.

A summary of the increased numbers are shown in the table below.

School	New places
Cottingley Village	10
Crossley Hall	12
Long Lee	10
Total	32

Primary ARC and DSP Forecasts

The need for ARCs and DSPs depends on the local child population. The key factor is identifying the number of children who have been assessed as needing an Education Health and Care Plan or are undergoing assessment. Historically a percentage of the population was assumed to have special educational needs and disabilities. The population of Bradford over a number of years has increased significantly leading to an increase in the demand for SEND places.

The table below shows the predicted number of children we expect to attend ARCs and DSPs in mainstream primary schools from 2018 to 2022.

Year	Current funded places	Prediction	Surplus places	% Surplus places
2018/19	130	100	30	23.4%
2019/20	130	105	25	19.3%
2020/21	130	111	19	14.4%
2021/22	130	114	16	12.4%
2022/23	130	116	14	11.0%

The impact of the newly established DSPs may be that demographic trends will change particularly as new assessments are completed and children are placed in ARCs, DSPs or Special schools.

No previous forecasts are available but in future years comparisons will be made to monitor and ensure accuracy.

Implications for ARC and DSP Provision from 2019

If current trends continue there should be sufficient capacity within the ARCs and DSPs due to the increased provision.

Proposals

Continue working with the SEND team and monitoring numbers through take up and census data.

A proposal made by Bradford Council to open an SEMH free special school has been approved by the ESFA but is currently at the competition stage seeking a sponsor. The closing date for which is 9 November 2018. This is for a 72 place special school for pupils aged 10 to 19, 12 places will be residential.

The new schools is for upper key stage 2 and above and is unlikely to affect the primary DSPs, however this will be monitored.