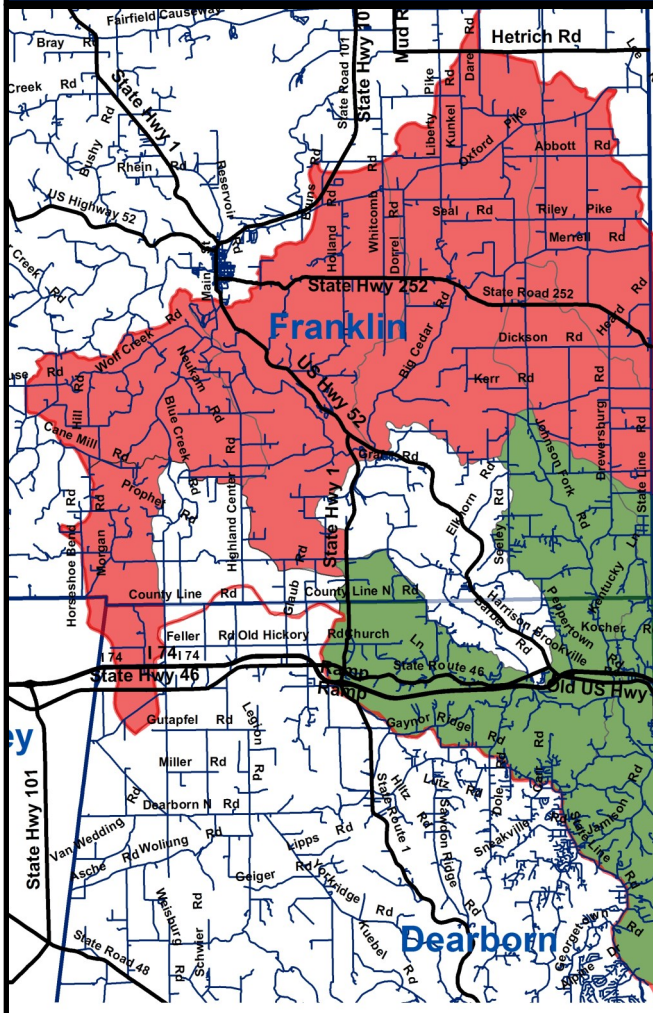


# Whitewater River Watershed

## Critical Priority Areas



### RED AREAS

High Priority -  
Eligible for first  
rounds of  
funding

### GREEN AREAS

Medium Priority  
- Eligible for  
funding if funds  
are still  
available mid  
2018

### WHITE AREAS

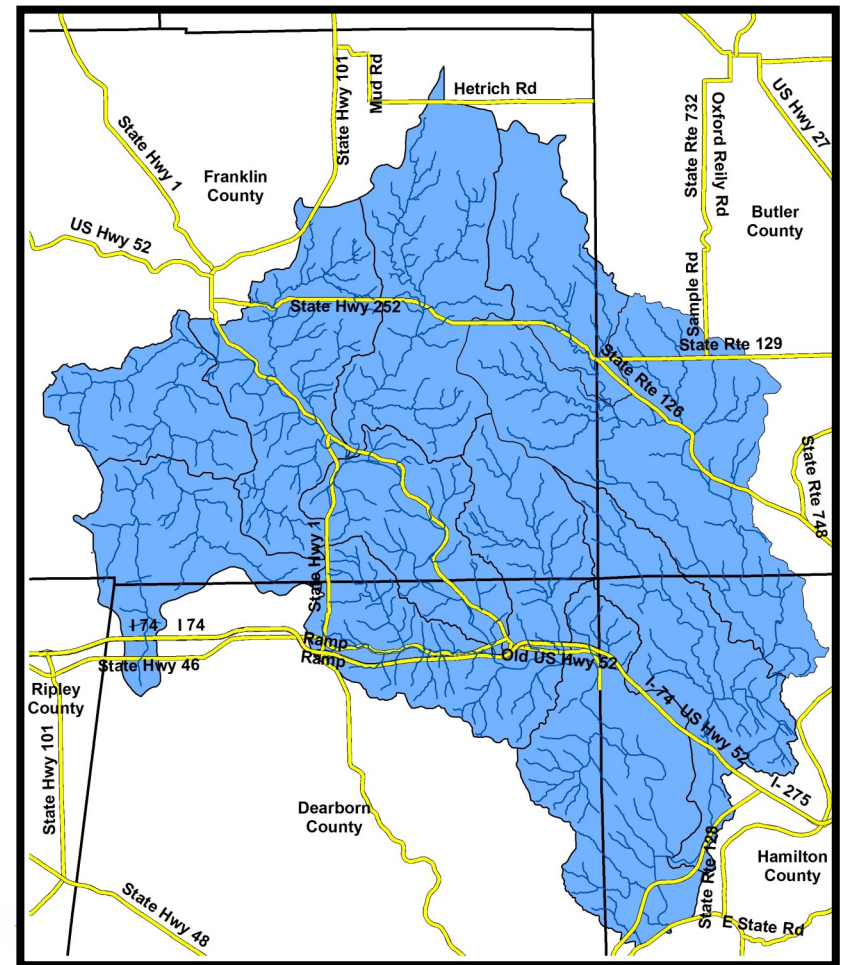
No Priority - Not  
eligible for  
funding

### For more information:

Contact your local SWCD office or  
Heather Wirth, Watershed Coordinator  
(P) 812-926-2406 ext. 107  
heather.wirth@in.nacdn.net

# WHITEWATER RIVER WATERSHED

## COST-SHARE PROGRAM 2017-20



**Our Mission:** *"To provide opportunities for community education, awareness, and cooperation to protect, preserve, and enhance the Whitewater River Watershed"*



# Cost-share Practices Available

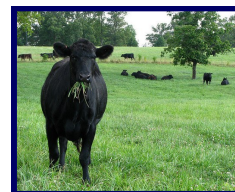
Practices	Percent Cost -share	Not to Exceed
Access Road (560)	70%	\$2.50/sq ft
Animal Trails and Walkways (575)	70%	\$2.50/sq ft
Cover crops (340)	70%	\$35/ac
Critical Area Planting (342)	70%	\$375/ac
Filter Strip (393)	70%	\$550/ac
Grade Stabilization (410)	70%	\$75/ft
Grassed Waterway (412)	70%	\$4.75/ft
Heavy Use Area Protection (561)		
Gravel	70%	\$2.50/sq ft
Concrete	70%	\$3.25/ sq ft
Lined Waterway or Outlet (468)	70%	\$75/ft
Mulching (484)	70%	\$1/ sq yd
Forage and Biomass Planting (512)	70%	\$295/ac
Permanent Fencing (382)	70%	\$3/ft
Pipeline (516)	70%	\$4/ft
Pumping Plant (533)	70%	\$1,700/unit
Riparian Buffer Establishment (390 & 391)	70%	\$700/ac
Roof Runoff Management System (558)	70%	\$6.50/ft
Spring Development (574)	70%	\$1,600/unit
Stream Crossing (578)		
Rock	70%	\$2/sq ft
Culvert	70%	\$5,000/unit
No-Till System (329)	70%	\$15/ac
Nutrient Management (590)		
Plan Development	70%	\$5/ac
Implementation	70%	\$5/ac
Prescribed Grazing (528)	70%	\$5/ac
Subsurface Drain & Underground Outlet (606 & 620)	70%	\$3/ft
Tree and Shrub Establishment (612)	70%	\$650/ac
Watering Facility (614)	70%	\$800/tank

**Maximum cost-share allowed is \$8,000 per applicant**

## Attention Whitewater River Watershed Landowners:

The Whitewater River Watershed Project, with assistance from the Indiana Department of Environmental Management (IDEM) and the Dearborn and Franklin County Soil and Water Conservation Districts (SWCDs), has secured funds to help you put conservation on your land. The Whitewater River Watershed Management Plan has recently been completed and this cost-share program will help address some of the resource concerns that were identified and will be the start of its implementation.

Funds from this project came from an IDEM 319 grant, sponsored by Dearborn County SWCD. Cost-share funds will be available through this implementation grant until February 2020 or when all of the money is allocated.



## Funding Process

When a landowner shows interest in the cost-share program, his/her property will be checked first to insure it is located inside the Whitewater River Watershed boundaries. A field visit will be conducted by the Watershed Coordinator, and the cost-share ranking sheet will be completed. Landowners who's property is located in a "High" priority areas and has a high ranking will be funded first. If money is still available, landowners who's property is located in the "Medium" priority areas will be eligible in mid 2018.

## Implementing Practices

All practices must be completed according to NRCS (Natural Resources Conservation Service) FOTG (Field Office Technical Guide) specifications. Many practices are engineered and must be installed according to the designs provided. Payment is a reimbursement and typically takes 4-6 weeks after paperwork is sent to IDEM. Landowners are responsible for paying for all materials and contractors after the work is completed. All practices and paperwork must be completed and submitted by January 2020.