

TEST OF TIME PRODUCTIONS PRESENT...



‘ONLY... SLIGHTLY REARRANGED’

‘SORRY-GRATEFUL’ FROM ‘COMPANY’, 1970

MONDAY, MARCH 31ST 2014

PIZZAEXPRESS LIVE – THE PHEASANTRY, CHELSEA

DOORS OPEN AT 6.30PM FOR 8.30PM

TICKETS: £15.00

WWW.PIZZAEXPRESSLIVE.COM / 08456 027017

TUESDAY, APRIL 1ST 2014

THE BATTERSEA BARGE, BATTERSEA

DOORS OPEN AT 7.00PM FOR 8.00PM

TICKETS: £15.00

WWW.SONDHEIMREARRANGED.EVENTBRITE.COM

SUNDAY APRIL 6TH 2014

LAUDERDALE HOUSE, HIGHGATE HILL, N6 5HG

DOORS OPEN AT 7.00PM FOR 7.30PM

TICKETS: £18.00 GENERAL ADMISSION / £14.00 CONCESSIONS

WWW.SONDHEIMATLAUDERDALEHOUSE.EVENTBRITE.COM

FOLLOWING THE SUCCESS OF 'LET'S DO IT!' (JERMYN STREET, LEICESTER SQUARE CABARET BAR, THE BRIDEWELL, UPSTAIRS AT THE GATEHOUSE) AND 'IN THE MOOD FOR A MELODY' (THE PHEASANTRY, CHELSEA), RHIANNON DRAKE AND TEST OF TIME PRODUCTIONS BRING YOU ANOTHER EVENING OF SUBLIME ENTERTAINMENT.

FEATURING A SELECTION OF THE FINEST PROFESSIONAL ACTOR/MUSICIANS IN LONDON, 'SONDHEIM – 'ONLY...SLIGHTLY REARRANGED' CELEBRATES THE WONDERFUL MUSIC OF STEPHEN SONDHEIM, WITH A TWIST... ALL THE GIRLS WILL BE SINGING THE BOYS' SONGS AND VICE VERSA! WITH SIMPLE PIANO ACCOMPANIMENT, AND TALES OF THE COMPOSER'S LIFE, IT IS A NIGHT NOT TO BE MISSED BY ALL SONDHEIM FANS!



SONDHEIM

'ONLY... SLIGHTLY REARRANGED'

CAST

RHIANNON DRAKE
BELLA BARLOW
MAGGIE ROBSON
TERRY BURNS
KWAMENA BRACE
GRAHAM HOPE

RHIANNON DRAKE

VOCALS / KEYS

PRODUCER / MUSICAL DIRECTION

RHIANNON IS A GRADUATE OF THE ARTS EDUCATIONAL SCHOOLS, LONDON (PETER GLENVILLE AWARD), WHERE SHE STUDIED FOLLOWING A GEOGRAPHY DEGREE AT THE UNIVERSITY OF OXFORD (JOHN BAIN CHORAL SCHOLAR). ALSO AN ASSOCIATE OF TRINITY COLLEGE, LONDON (ATCL DIP. WITH DISTINCTION), SHE REGULARLY WORKS AS BOTH AN ACTRESS AND A MUSICIAN, AS WELL AS PRODUCING SHOWS WITH HER COMPANY, TEST OF TIME PRODS.



PROFESSIONAL STAGE CREDITS INCLUDE: AND YOU WERE WONDERFUL, ON STAGE (TATE BRITAIN/TATE MODERN/THE NATIONAL ACADEMY, NEW YORK), LET'S DO IT! (JERMYN STREET, THE BRIDEWELL, LEICESTER SQ. THEATRE, UPSTAIRS AT THE GATEHOUSE), ALADDIN (SADLER'S WELLS), THE LAST WITCH (HERTFORD THEATRE), SHAKESPEARE, LIVE! (NATIONAL TOUR) AND THROUGH THE LOOKING GLASS (EDINBURGH FRINGE).

PROFESSIONAL CONCERT CREDITS INCLUDE: 'WEST END VOICES AT CHRISTMAS' (THE ACTORS' CHURCH), 'IN THE MOOD FOR A MELODY' (THE PHEASANTRY) AND 'THE SINGERS' SOIREE' (THE BATTERSEA BARGE).

PROFESSIONAL FILM CREDITS INCLUDE: THE GIRL THAT LIVED (MIND CHARITY), UNCONSCIOUS BIAS (THE CREATE NETWORK) AND THE CLAPPING SONG (RUSSELL GRANT'S MUSIC VIDEO).

WWW.RHIANNONDRAKE.CO.UK

@RHIANNONDRAKE

MAGGIE ROBSON

VOCALS

MAGGIE TRAINED AS AN ACTRESS (GUILDHALL). HER CAREER HAS BEEN VARIED. SHE HAS PERFORMED IN OPERA CHORUSES, CABARETS AND RECENT MUSICAL ROLES INCLUDE: MARGARET LORD (HIGH SOCIETY); MISS CROWE (A MAN OF NO IMPORTANCE); ABBY (THE MUSICAL OF MUSICALS); SALLY (FOLLIES); MRS. KRAMER (ONE TOUCH OF VENUS); SARAH-JANE MOORE (ASSASSINS); DOLLY (HELLO DOLLY); A SHARON OSBOURNE PORTRAYAL IN NEW MUSICAL ELECTION IDOL.



STAGE CREDITS INCLUDE: NURSE (WOMEN OF TWILIGHT); HENRIETTA ISCARIOT (LAST DAYS OF JUDAS); IZZY (HOUSE AND GARDEN); FANNY (MARY ROSE); RANEVSKAYA (THE CHERRY ORCHARD); ELSE (FESTEN); LADY LOADSTONE (BEN JONSON'S THE MAGNETIC LADY), FOR WHICH MAGGIE WAS NOMINATED FOR AN 'OFFIE'; MAGDA (NIGHT OF JANUARY 16TH); BRENDA (ROAD); UNDERSTUDY (DINNERLADIES TOUR); VOLUMNIA (CORIOLANUS); DUCHESSES OF GLOUCESTER/YORK (RICHARD II); MARIA (TWELFTH NIGHT); ADRIANA (COMEDY OF ERRORS).

MAGGIE APPEARS IN MANY SHORT FILMS AND ALSO WORKS AS A VOICEOVER ARTIST. SHE NEXT APPEARS IN NEW MUSICAL SHELLSHOCK.

WWW.MAGGIEROBSON.COM

[@MAGGIEROBSON](https://www.instagram.com/MAGGIEROBSON)

BELLA BARLOW

VOCALS / KEYS / MUSICAL DIRECTION

BELLA (ORIGINALLY FROM DEVON) TRAINED AT THE ROYAL CENTRAL SCHOOL OF SPEECH AND DRAMA IN MUSICAL THEATRE, OBTAINING A DISTINCTION IN HER MA HAVING COMPLETED HER BA (HONS) IN MUSIC AT THE UNIVERSITY OF SOUTHAMPTON AND DIPLCM (DISTINCTION).

PROFESSIONAL STAGE CREDITS INCLUDE: CINDY IN LOVE AND ANIMOSITY (GEORGE WOOD THEATRE), BILLY BOW (THE NUFFIELD), LEAD FEMALE IN AMORE (SOUTH COAST UK TOUR), FLORINDA IN INTO THE WOODS (STOKE REP.), MODEL/ENSEMBLE IN WAG! THE MUSICAL (ROSE AND CROWN), SIDE BY SIDE BY SONDHEIM, (EDINBURGH FRINGE), LOVE AND FACEBOOK



(BATTERSEA BARGE), A NEW HORIZON (UNION THEATRE), ONLY LOVE (LANDOR THEATRE), AND, MOST RECENTLY, CALLING ALL DIVAS (THE PHEASANTRY).

FILM/TV CREDITS INCLUDE: CORPORATE (SOUTHPOINT FILMS), BOLLOCKS (POLARITY FILMS), IT'S LOVE ACTUALLY (SKY LIVING TV), TRADING MODELS (BARR PRODUCTIONS), VALDA (GUI OLIVEIRA), JOAN ARMATRADING'S MUSIC VIDEO STARLIGHT (DIRECTED BY JOEL ANDERSON), DON'T LET GO (WRITTEN BY JACOB WILLIAM).

MUSICAL DIRECTION INCLUDES: ASSISTANT MUSICAL DIRECTOR FOR SOUL MUSIC (BRACKNELL ARTS CENTRE), MD/COMPOSER FOR CINDERELLA (4PANTS), COMPOSER/PIANIST FOR SWANN AND COMPANY PRESENTS... (EDINBURGH FRINGE), ALADDIN (THE ANNEX THEATRE, SOUTHAMPTON), AND HASHTAG (BATTERSEA BARGE).

WWW.BELLABARLOW.CO.UK

[@BELLA BARLOW](https://www.instagram.com/bella_barlow)

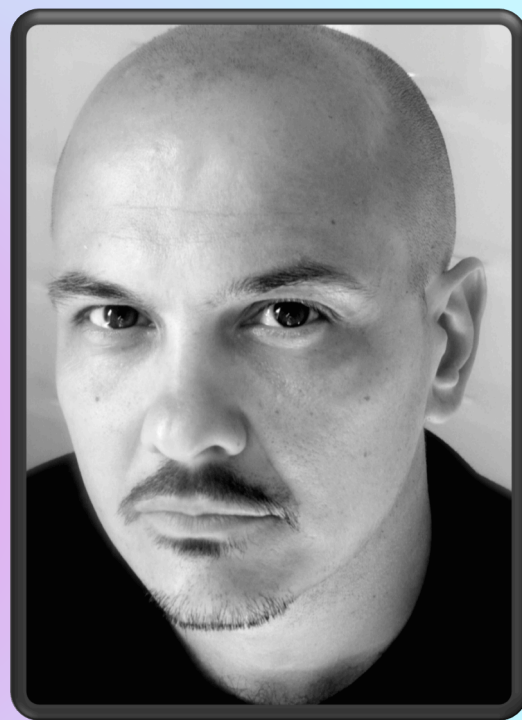
TERRY BURNS

VOCALS

TERRY GRADUATED FROM THE BA ACTING COURSE AT THE CENTRAL SCHOOL OF SPEECH AND DRAMA.

HIS THEATRE CREDITS INCLUDE: SEE HOW THEY RUN (SERGEANT TOWERS/THEATRE ROYAL YORK), HITLER ON TRIAL (HITLER/NATIONAL TOUR), LET'S DO IT! (SINGER/VARIOUS INCL. LEICESTER SQ. THEATRE), MUCH ADO ABOUT NOTHING (DON PEDRO/ DRAYTON ARMS THEATRE), THE TEMPEST (CALIBAN/ DRAYTON ARMS THEATRE), LONESTAR (ROY/THEATRE 503 & EDINBURGH FRINGE), HOOKED (PARNELL/THEATRE 503 & EDINBURGH FRINGE), SLICE OF SATURDAY NIGHT (RICK/NATIONAL TOUR), TRUCKERS (ANGALO/NATIONAL TOUR), ROPE (RAGLAN/THEATRE ROYAL, NOTTINGHAM), LOOT (DENNIS/NORTHCOTT THEATRE, EXETER).

TV CREDITS INCLUDE: FAMILY AFFAIRS (JOSH MATTHEWS - REGULAR CHARACTER/CHANNEL 5), THE BILL (JONNO/THAMES TELEVISION) AND MURDER IN MIND (DUNCAN/BBC 1). VOICEOVER CREDITS INCLUDE: WE WERE WANDERERS (NARRATOR/MALAYSIAN TOURIST FILM), A SOLITARY WORLD (NARRATOR/PBS OFFICIAL SHORT) AND FOUR SEASONS (NARRATOR/FOUR SEASONS HOTELS INFOMERCIAL)



WWW.TERRUBURNS.CO.UK

[@IAMTERRYBURNS](https://www.instagram.com/iamterryburns)



KWAMENA BRACE

VOCALS

KWAMENA IS A FINNISH NATIVE NOW STUDYING AND WORKING AS AN ACTOR, MUSICIAN (SINGER/SAXOPHONE), DANCER (INCLUDING HIP-HOP AND POPPING) AND MODEL IN LONDON.

BACK IN FINLAND HE WAS A WELL-KNOWN BASKETBALL PLAYER, MOST RECENTLY PLAYING FOR THE VILPAS VIKINGS. HE ALSO WORKS AS A VOICE OVER ARTIST DOING BOTH COMMERCIAL AND CHARACTER VOICES. HE IS CURRENTLY STUDYING AT WEST END MASTERCLASS (MICHAEL XAVIER/LINDSEY WISE).

PROFESSIONAL CREDITS INCLUDE: NIGHT AT THE MUSEUM 3 (FEATURE), MEDICS (PILOT TV SERIES FOR COMEDY CENTRAL), ADIDAS FOOTLOCKER COMMERCIAL (FEATURED ARTIST), ACTIVIA WEB COMMERCIAL (DANCER).

WWW.STARNOW.CO.UK/KWAMENABRACE

@KWAMENABRACE

GRAHAM HOPE

VOCALS

GRAHAM TRAINED AND RECEIVED A BA HONS DEGREE IN MUSIC THEATRE AT UNIVERSITY OF CENTRAL LANCASHIRE. PERFORMING FROM A YOUNG AGE, HE HAS BEEN INVOLVED WITH OVER 40 MUSICALS. HE HAS PERFORMED WITH MANY AWARD WINNING THEATRE COMPANIES IN STOKE ON TRENT, STAFFORDSHIRE, LANCASHIRE & LONDON.

RECENT ROLES INCLUDE: SAM PIGEON (CURSE OF THE RED SKULL AT MUTINY BAY) ALTON TOWERS RESORT, MALCOLM (FULL MONTY THE MUSICAL), CHUCK (FOOTLOOSE), TOBY (SWEENEY TODD), JAMIE (L5Y) AND ROGER (RENT), TO NAME A FEW. GRAHAM WAS ALSO A MEMBER OF THE AWARD WINNING UNIVERSITY OF CENTRAL LANCASHIRE CHAMBER CHOIR, WINNING GOOD HOUSE KEEPING CHOIR OF THE YEAR (2009) AND BBC ADULT CHOIR OF THE YEAR (2011).

MOST RECENTLY GRAHAM PERFORMED WITH THE WEST END GOSPEL CHOIR ON THE PAUL O'GRADY LIVE CHRISTMAS SPECIAL. HE IS CURRENTLY TRAINING AT WEST END MASTERCLASS (MICHAEL XAVIER/LINDSEY WISE). **@GRAHAMHOPE86**

