

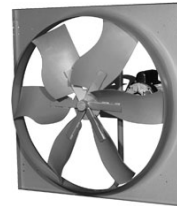
FAN DISTRIBUTORS

Specialists In Air Moving Equipment
Stock Catalog

\$3.00

JUNE 2010

FANS – BLOWERS - ACCESSORIES



INDEX

FANS		Page	BLOWERS		Page
All Items in Stock For Same Day Ship or pick-up -Prices- Subject to Change Without Notice -Freight- F.O.B. Cambridge, MA	Attic.....	1,3	Acid, Chemical.....	11,12,13,17,19,20	
	Bathroom.....	5,6,7,8,9	Backward Curve.....	17	
	Belt Drive Prop.....	2,3,10,29	Inline.....	21,22	
	Ceiling.....	7,9	Forward Curve:		
	Commercial Kitchen.....	17,24,27,28	Belt Drive.....	15,22	
	Direct Drive Prop.....	1,4	Direct Drive.....	7,11	
	Duct and Inline.....	5,7,10,21,22	Duct, Inline.....	7,21,22	
	Kitchen.....	5,6	Material Handling.....	12,13,14	
	Roof (Axial).....	4,29	Pressure.....	13,14	
	Roof & Sidewall Mounted:		Supply Air.....	21,22,24	
	Centrifugal Down-blast.....	6,25,26	MISCELLANEOUS		
	Centrifugal Up-blast.....	27,28	Motor controls.....	23	
	Supply.....	2,5,7,21,22,24	Roof Curbs.....	30	
	Vent-Axia.....	4	Shutters & Dampers.....	31	
Whole House.....	3	Special Motors.....	16		
Motors, Pulleys & Belts.....	32,33	Technical Info.....	1,32		
Terminology, Hood Velocities.	34	Vibration Isolators.....	23		

**Baldor - Cincinnati - Delhi – Fantech - FloAire
Marathon - Masterdrive – Panasonic - Peerless
Reversomatic – A.O. Smith - Triangle - Vent-Axia**

55 REGENT ST • CAMBRIDGE, MA 02140

TEL. 617-868-1310 • FAX 617-864-3138

Email fandistr@verizon.net

Website www.fandistr.com

FloAire SHUTTER MOUNTED EXHAUST FAN



DIRECT DRIVE SERIES

AVAILABLE IN 12" THROUGH 24" BLADE DIAMETER.

CONTINUOUS DUTY MOTORS.

OSHA APPROVED BACKGUARD

STATICALLY & DYNAMICALLY BALANCED.

TOTALLY ENCLOSED MOTORS.

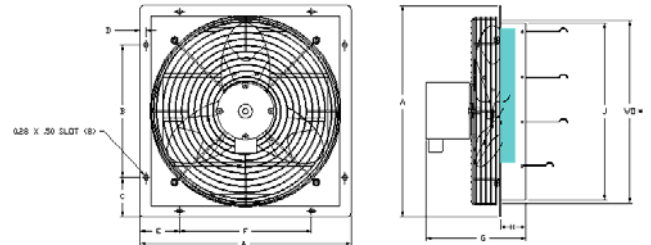
UL LISTED IN COMPLIANCE WITH UL 705.

MODEL NO.	HP	RPM	CFM AGAINST STATIC PRESSURE										115/1/60	
			0"	.025"	.05"	.075"	.10"	.125"	.15"	.175"	.20"	.25"	1 SPEED	•VARI. SPEED
SM12	1/30	1550	815	763	708	653	587	501	419	317			\$348.	\$378.
SM16	1/20	1525	1525	1216	1120	1033	953	881	765				520.	550.
SM18	1/15	1075	1876	1684	1554	1323	949	751	636	509			580.	610.
SM24	1/4	1075	3212	2876	2675	2444	2198	2015	1832	1649	1444	1027	728.	758.

•With speed control (Do not slow fan so that shutter blades close more than half way).

Dimensions

Model No.	A	B	C	D	E	F	G	H	J	WO	WT.
SM12	15-1/8	8	3-9/16	9/16	3-9/16	8	8	2-3/8	12	13	12#
SM16	19-1/8	12	3-9/16	9/16	3-9/16	12	9	2-3/8	16	17	15#
SM18	21-1/8	14	3-9/16	9/16	3-9/16	14	11-7/8	3	18	18-1/2	19#
SM24	27-1/8	20	3-9/16	9/16	3-9/16	20	12-5/8	3	24	25	60#



Building & Room Air Change Rates

Type Area	Minutes Per Change	Type Area	Minutes Per Change
Assembly Hall	3 - 10	Generating Room	2 - 5
Attics	2 - 4	Heat Treating	1/2 - 1
Auditorium	4 - 15	Kitchen	1 - 5
Bakery	1 - 3	Laundry	2 - 5
Bar	2 - 4	Machine Shop	3 - 6
Boiler Room	1 - 4	Mill, Paper	2 - 7
Cafeteria	3 - 5	Mill, Textile	5 - 15
Church	4 - 15	Offices	2 - 8
Classroom	4 - 6	Packing House	3 - 5
Corridor	5 - 20	Recreation Room	2 - 8
Factories (Light)	5 - 10	Restaurant	5 - 10
Factories (Heavy)	1 - 6	Retail Store	5 - 10
Forge Shop	1 - 2	Theatre	3 - 8
Foundry	1 - 5	Toilet	2 - 5
Garage	2 - 10	Transformer Rm.	1 - 5
		Warehouse	6 - 10

FloAire WPC FANS

BELT DRIVE

- STANDARD GRAY ACRYLIC EPOXY FINISH
- NON OVERLOADING PROPELLER
- L50 BALL BEARINGS 200,000 HOUR LIFE
- PRECISION BALANCED
- AMCA CERTIFIED FOR BOTH SOUND & AIR PERFORM



The WPC sidewall fans are ideal for general purpose exhaust applications including garages, factories, warehouses, gymnasiums or any commercial - industrial area.

When ordering: Specify Model – Voltage – Phase – Accessories

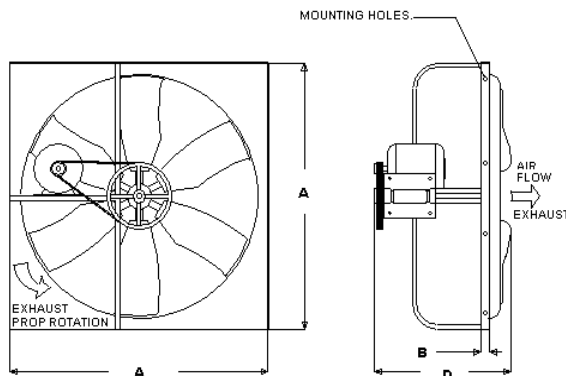
Model No.	Bade Size	HP	CFM	Static pressure in inches W.G.						SINGLE SPEED		Wall Shutter			
				0"	.05"	.10"	.15"	.20"	.25"	.30"	.35"		1 PHASE	3 PHASE	
WPC24	24"	1/3	5500	649/0.24	683/0.28	719/0.33	757/0.38	799/0.45	841/0.52	882/0.60	922/.69	\$970.	1110.	\$112.	
		1/2	6000	708/0.31	740/0.36	772/0.40	805/0.46	842/0.52	881/0.60	919/0.68	1090.				1120.
		3/4	6500	767/0.40	796/0.44	825/0.49	856/0.55	888/0.62	923/0.69	1140.	1130.				
			7000	826/0.49	853/0.55	880/0.60	908/0.66	937/0.73							
			7500	885/0.61	911/0.66	936/0.72									
			8000	943/0.74											
WPC30	30"	1/3	8000	500/0.29	530/0.34	561/0.41	595/0.49	629/0.57	663/0.67	696/0.78	728/0.89	1070.	1210.	120.	
		1/2	9000	562/0.41	589/0.47	616/0.54	645/0.62	675/0.71	706/0.81	736/0.92	1190.				1220.
		3/4	10000	625/0.56	649/0.63	673/0.70	698/0.78	725/0.88	752/0.98	1250.	1230.				
			11000	687/0.75	709/0.82	731/0.90	753/0.98			1380.	1240.				
			12000	749/0.97											
WPC36	36"	1/2	11250	473/0.42	497/0.48	521/0.55	545/0.63	569/0.72	595/0.83			1290.	1280.	190.	
		3/4	12500	526/0.57	548/0.64	569/0.72	590/0.81	612/0.90			1350.				1310.
			13750	578/0.76	598/0.84	618/0.93				1470.	1320.				
			15000	631/0.98											
WCP42	42"	3/4	15000	400/0.56	421/0.66	443/0.76	465/0.88					1610.	1570.	228.	
		1.0	16500	440/0.75	459/0.85	478/0.96				1730.	1580.				
			18000	480/0.97											
WPC48	48"	1.0	19500	344/0.80	362/0.93	380/1.08	393/1.19	404/1.28				1830.	1680.	262.	
			20500	362/0.93	379/1.06	397/1.22	410/1.35	420/1.45			1940.				1710.
			21500	379/1.07	396/1.21	413/1.37									
			22500	397/1.22	413/1.37										
			23500	415/1.39											

Totally Enclosed and Two Speed Motors available see page 16. Model WPC54 available please inquire.

Dimensions

Model	A	B	D	*WO
WPC24	28	16.5	1	28.75
WPC30	34	16.5	1	34.75
WPC36	40	15.5	1	40.75
WPC42	46	16.5	1	48.75
WPC48	54	16.5	1.5	54.75

*Wall Opening using wall sleeve.



Wall Sleeve With Inlet Guard

WPC24	- \$686.
WCP30	- 760.
WCP36	- 978.
WCP42	- 1250.
WCP48	- 1266.

COMFORT COOLER WHOLE HOUSE FANS

A whole house fan which creates a cooling breeze throughout a home, with only one small energy-efficient motor, will give comfortable cooling at a tremendous savings over air conditioning. It is recommended to use a whole house fan when the temperature is 85° or below, and your air conditioner on days above 85°, this reduce electric costs by as much as 90%.

Ceiling Model

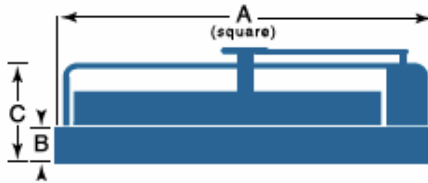


Wall Model



MODEL		HP	RPM*	CFM	DIMENSIONS			115/1/60 2 SPEED	SHUTTERS		NO JOIST CUT CEILING SHUTTER	REQUIRED EXHAUST AREA
CEILING	WALL				A	B†	•C		CEILING	WALL		
CC2422	V242	1/4	560	3700	30	4	15	\$834.	\$156.	\$112.	#CSS24 \$196.	8 SQ. FT.
CC3023	V302	1/2	460	6900	34	4	15	1030.	180.	120.	#CSS30 230.	10 SQ. FT.
CC3623	V362	1/2	415	10600	40	4	15	1070.	242.	188.	#CSS36 240.	12 SQ. FT.
CC4223	V422	1/2	410	12000	46	4	15	1080.	274.	230.	NOT AVAILABLE	16 SQ. FT.

*High speed. Low speed is 60% of high. †2" on wall fan. •13-1/2" wall fan and propeller extends 2.75" beyond "C" dimension.



CEILING SHUTTER DIMENSIONS

MODEL	FAN SIZE	OUTSIDE DIMENSION	INSIDE DIMENSION
AS10	24"	26" x 26"	24" x 24"
AS11	30"	32" x 32"	30" x 30"
AS16	36"	34" x 45"	32" x 43"
AS18	42"	36" x 48"	34" x 46"

NO JOIST CUT SHUTTER DIMENSIONS

MODEL	FAN SIZE	OUTSIDE DIMENSION	INSIDE DIMENSION
CSS24	24"	24" x 32"	22" x 30"
CSS30	30"	32" x 35"	30" x 33"
CSS36	36"	32" x 43"	30" x 40"
N/A	42"		

Installs centered on joist with 16" or 24" centers.

FAN DISTRIBUTORS CALL 617-868-1310

Vent-Axia® T Series

VENTILATING FANS Five Models Each In Four Sizes.

Window Model – Designed for single pane or insulated glass, most types of glass and Material up 1-5/16" thick.

Roof Model – Low profile cowl suitable for horizontal, angled and vertical mounting positions.

Wall Model – Designed to fit most wall thicknesses using telescopic liners supplied with the unit.

Panel Model – Ideal for installing into partitions and ceilings. Can be connected to round duct.

Darkroom Model – Exhausts without letting in light.



Window Model	Blade Dia.	Rough Opening	CFM Low	CFM Med.	CFM High	Watts (Med.)	Sones (Med.)	Price
6WW	6	7¼	145	184	210	55	2.7	\$794.
7WW	7½	8¾	178	233	284	60	1.9	984.
9WW	9	10¼	275	403	467	95	2.8	1286.
12WW	12	13¼	645	833	950	130	4.1	1700.

Wall Model	Blade Dia.	Rough Opening	CFM Low	CFM Med.	CFM High	Watts (Med.)	Sones (Med.)	Price
6WL	6	11¼x10¾	158	205	233	55	2.7	\$1098.
7WL	7½	13¾x11¾	196	257	313	60	1.9	1310.
9WL	9	14¾x13¾	302	443	513	95	2.8	1636.
12WL	12	18 x 16½	697	900	1027	130	4.1	2100.

Roof Model	Blade Dia.	Rough Opening	CFM Low	CFM Med.	CFM High	Watts (Med.)	Sones (Med.)	Price
6RF	6	7¼	116	147	172	55	2.7	\$884.
7RF	7½	8¾	178	233	284	60	1.9	1130.
9RF	9	10¼	275	403	467	95	2.8	1430.
12RF	12	13¼	593	767	873	130	4.1	1900.

Panel Model	Blade Dia.	Rough Opening	CFM Low	CFM Med.	CFM High	Watts (Med.)	Sones (Med.)	Price
6PL	6	9¼ x 9¾	174	225	257	55	2.7	\$856.
7PL	7½	10¾x11¼	216	282	344	60	1.9	1046.
9PL	9	12¾x12¾	333	488	565	95	2.8	1350.
12PL	12	15¼x15¼	748	967	1108	130	4.1	1806.

Darkroom Model	Blade Dia.	Rough Opening	CFM Low	CFM Med.	CFM High	Watts (High)	Sones (Low)	Price
6DR	6	7¼	118	141	156	55	2	\$1030.
7DR	7½	8¾	194	244	312	60	1	1318.
9DR	9	10¼	268	371	427	95	2	1644.
12DR	12	13¼	512	612	622	130	3	2162.

Controls

3 Speed surface mount (also reverses air flow)-----\$230.

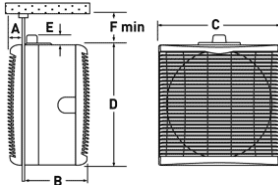
3 Speed flush mount (also reverses air flow)-----270.

De-humidistat-----104.

Cooling thermostat (90°F to 50°F)-----60.

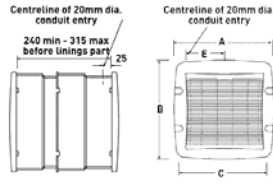
5 core wire, color coded (used with 3 speed control)-----4.10/ft.

Window Model



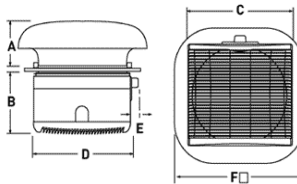
Size Dim.	6 in	7 in	9 in	12 in
A	12 1/4	13 7/8	15 3/8	18 1/2
B	12	13 5/8	15 1/4	18 3/8
C	10 1/4	11 3/4	13 1/4	16 3/8
D	10 1/8	11 3/4	13 1/2	16 1/2
E Max.	8 1/2	8 7/8	9 5/8	10 7/8
E Min.	4 1/2	4 5/8	5	5 5/8
Weight oz	15lb 2oz	17lb	21lb	28lb 15oz

Wall Model



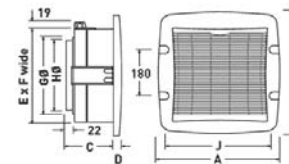
Size Dim.	6 in	7 in	9 in	12 in
A	12 1/4	13 7/8	15 3/8	18 1/2
B	12	13 5/8	15 1/4	18 3/8
C	10 1/4	11 3/4	13 1/4	16 3/8
D	10 1/8	11 3/4	13 1/2	16 1/2
E Max.	8 1/2	8 7/8	9 5/8	10 7/8
E Min.	4 1/2	4 5/8	5	5 5/8
Weight oz	15lb 2oz	17lb	21lb	28lb 15oz

Roof Model



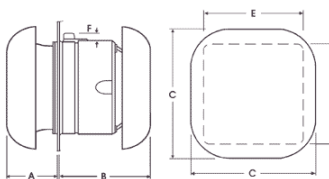
Size Dim.	6 in	7 in	9 in	12 in
A	14	5 5/8	5 3/8	6 3/4
B	5 1/8	5 1/8	5 5/8	6 5/8
C	9	10 1/2	12	15
D	8 5/8	10 1/8	11 7/8	14 7/8
E	3/4	3/4	3/4	3/4
F	11 1/4	15 3/4	15 3/4	19 3/4
Fixing hole	7 1/4	8 3/4	10 1/4	13 1/4
Weight	8lb 12oz	10lb 3oz	13lb 11oz	20lb 7oz

Panel Model



Size Dim.	6 in	7 in	9 in	12 in
A	12 1/4	13 7/8	15 3/8	18 1/2
B	12	13 5/8	15 1/4	18 3/8
C	4 5/8	4 5/8	5 1/8	6 1/8
D	1 1/4	1 1/4	1 1/4	1 3/8
E	8 5/8	10 1/8	11 7/8	14 7/8
F	9	10 1/2	12	15
G	7 1/8	8 5/8	10 1/8	13 1/4
H	6 3/4	8 1/4	9 3/4	12 7/8
J	10 1/2	12 1/16	13 9/16	16 5/8
K	9 1/8	10 5/8	12 1/8	15 1/4
L	9 5/8	11 1/8	12 7/8	15 3/4
M	3 3/8	4 1/8	5	6 1/2
Weight lb	7lb 11oz	8lb 7oz	11lb 5oz	16lb 6oz

Darkroom Model



Size Dim.	6 in	7 in	9 in	12 in
A	4	5 3/8	5 3/8	6 3/4
B	7 3/4	8 1/8	9	12 1/8
C	11 1/4	15 3/4	15 3/4	19 3/4
D	8 5/8	10 1/8	11 7/8	14 7/8
E	9	10 1/2	12	15
F	3/4	3/4	3/4	3/4
Fixing hole	7 1/4	8 3/4	10 1/4	13 1/4
Weight lb	9lb 2oz	11lb 12oz	14lb 9oz	22lb 3oz

FAN DISTRIBUTORS 617-868-1310

FANTECH DIRECT DRIVE IN-LINE BLOWERS

All Fantech fans are used for heating or air conditioning boosting, remote mounted bathroom and shower exhaust, kitchen range hood exhaust and general ventilation or air supply applications.



FR Series Features

UV PROTECTED THERMOPLASTIC HOUSING

UL LISTED FOR OUTDOOR USE OR WET LOCATIONS

CAN BE USED IN TEMPERATURES UP TO 140°F

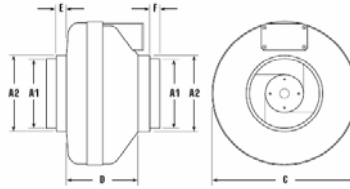
Fan Model	RPM	115V Amps	Duct Size	CFM vs Static Pressure						•Vari		(2) Clamps	MGE Grille			
				0"	.2"	.4"	.6"	.8"	1.0"	1.5"	Fan Speed			Damper		
FR110	2761	.67	4"	167	150	133	113	88	63			\$308.	\$348.	\$34.	\$34.	\$38.
FR140	2850	.53	6"	214	190	162	132	99	46			316.	356.	44.	42.	54.
FR150	2411	.78	6"	243	220	196	170	142	114			316.	356.	44.	42.	54.
FR160	2539	1.09	6"	289	260	233	206	179	154	89		400.	440.	44.	42.	54.
FR225	2964	1.28	8"	429	400	366	332	297	260	168		518.	558.	64.	46.	72.
FR250	2817	2.08	10"	563	530	493	456	419	381	294		590.	630.	84.	54.	-

• Fan with speed control.

Model	A1	A2	C	D	E	F
FR110	3 ⁷ / ₈	5	9 ¹ / ₂	6 ¹ / ₈	7 ⁷ / ₈	7 ⁷ / ₈
FR140	5 ⁷ / ₈	6 ¹ / ₄	11 ¹ / ₄	5 ⁷ / ₈	1	7 ⁷ / ₈
FR150	5 ⁷ / ₈	6 ¹ / ₄	11 ¹ / ₄	5 ⁷ / ₈	1	7 ⁷ / ₈
FR160	5 ⁷ / ₈	6 ¹ / ₄	11 ¹ / ₄	6 ³ / ₈	1	7 ⁷ / ₈
FR225	7 ⁷ / ₈	10	13 ¹ / ₄	6 ¹ / ₄	1 ¹ / ₂	1 ¹ / ₂
FR250	-	10	13 ¹ / ₄	6 ¹ / ₄	1 ¹ / ₂	-

#DB 10 DRYER BOOSTING SWITCH - \$138.

For Fan #'s FR110, FG4XL & RVF4. Positive pressure switch turns fan on for ten minute cycle.



FG Series Features

GALVANIZED STEEL HOUSING

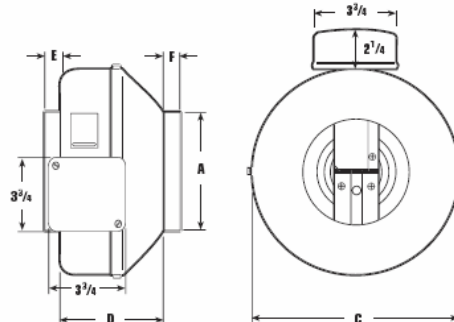
UL LISTED UNDER STANDARDS 507 AND 705 FOR CONDITIONED AIRSTREAMS OF UP TO 140°F

USED EXTENSIVELY FOR RANGE HOOD EXHAUST

Fan Model	RPM	115V Amps	Duct Size	CFM vs Static Pressure							•Vari			
				0"	0.1"	0.2"	0.4"	0.6"	0.8"	1.0"	1 ¹ / ₄ "	1 ¹ / ₂ "	Fan Speed	Speed
FG4XL	2750	.66	4"	170	160	150	134	119	103	86	63	40	\$292.	\$332.
FG5XL	2700	.68	5"	220	205	190	160	135	112	91	66	41	296.	336.
FG6XL	2900	1.48	6"	483	466	450	409	369	329	289	243	201	400.	440.
FG8XL	2950	1.45	8"	502	486	470	428	388	351	313	266	218	490.	530.
FG10XL	3100	1.96	10"	589	574	560	531	503	472	441	400	355	560.	600.

• Fan with speed control. For accessories see FR series.

Model	A	C	D	E	F
FG4XL	9 ³ / ₄	4	7	1	1
FG5XL	9 ³ / ₄	5	6	1	1
FX6XL	13 ³ / ₈	6	6 ³ / ₈	1	1
FX8XL	13 ³ / ₈	8	6	1 ¹ / ₈	1 ¹ / ₈
FX10XL	13 ³ / ₈	10	5 ⁷ / ₈	1 ¹ / ₈	1

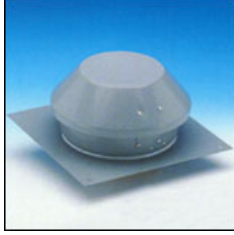


FAN DISTRIBUTORS 617 868-1310

FANTECH ROOF FANS

DIRECT DRIVE

RE Series Features



CAN BE MOUNTED ON THE ROOF OR WALL
 PAINTABLE, BAKED POWDER COATED FINISH
 PERMANENTLY LUBRICATED SEALED BALL BEARINGS

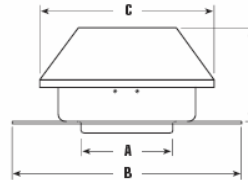
Fan Model	115V RPM	Duct Size	CFM vs Static Pressure										•Vari Fan Speed		
			0"	1/8"	1/4"	3/8"	1/2"	3/4"	1.0"	1 1/2"	2.0"	2 1/2"	Fan	Speed	
RE 6	2700	.80	6"	227	213	199	184	169	134	106	51			\$400.	\$440.
RE 8XL	2850	1.36	8"	409	382	356	331	307	259	212	130	43		576.	616.
RE 10XL	3250	3.61	10"	753	738	721	705	690	656	622	548	467	383	946.	986.

•Fan with speed control

See FR series for dampers and grilles

Dimensions

Model	A	B	C	D
RE 6	6	15 1/2	13-3/16	6 1/2
RE8XL	8	20	15 3/4	6
RE10XL	10	20	19 3/4	11 3/4



RVF Wall Series Features

BAKED, POWDER COATED FINISH
 SUITABLE FOR AIRSTREAM TEMPERATURE UP TO 140°F
 MOUNTS NEATLY ON EXTERIOR WALLS

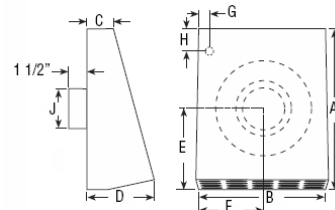
Fan Model	115V RPM	Duct Size	CFM vs Static Pressure							•Vari Fan Speed				
			0"	.1"	.2"	.4"	.6"	.8"	1.0"	1.5"	Fan	Speed		
RVF 4XL	2700	.84	4"	193	180	172	154	136	118	91			\$344.	\$384.
RVF 6XL	3000	1.46	6"	381	360	346	315	285	258	213	64		476.	516.
RVF 8XL	2900	1.42	8"	435	410	392	348	312	282	235	102		540.	580.

•Fan with speed control.

Refer to FR Series for dampers and grilles.

Dimensions

Model	A	B	C	D	E	F	G	H	J
RVF 4XL	13	10 1/4	2 7/8	6	5 1/4	5	1	2 1/2	4
RVF 6XL	17	14 1/4	2 7/8	6	7 1/4	7	1	2 1/2	6
RVF 8XL	17	14 1/4	2 7/8	6	7 1/4	7	1	2 1/2	8



FAN DISTRIBUTORS 617-867-1310

FloAire CEILING & INLINE FAN



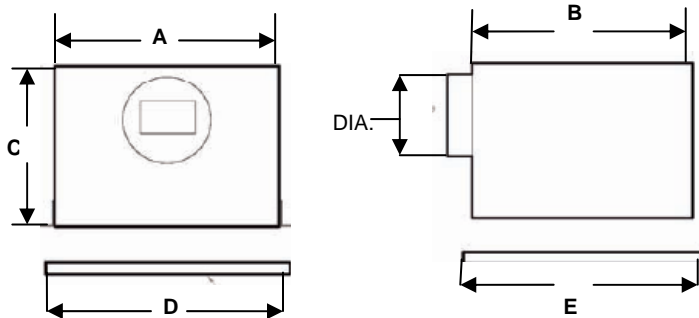
ADJUSTABLE AIR FLOW
 DECORATOR DELUXE GRILLE IS STANDARD
 ECONOMICAL – EXCELLENT VALUE
 EASY TO INSTALL AND MAINTAIN

LOW SOUND LEVEL - INSULATED CABINETS
 DISCHARGE CAN BE CHANGED IN THE FIELD - 90° or 180°

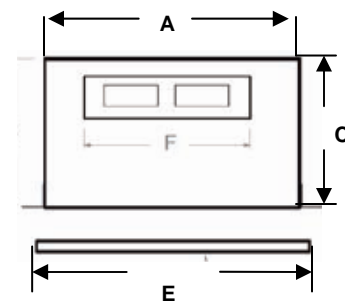
Model	Max 120v			SP	CFM vs Static Pressure								Fan Price	Speed Control	Inline Adapter	Wall Cap	Sloped Roof Cap
	Watts	Amps	RPM		0"	.125"	.250"	.375"	.500"	.625"	.750"						
CFA100	88	1.0	650	CFM Sones	138 0.7	112 1.0	98 1.3	80 1.8	67 2.0	46 2.8	\$234.	\$32.	#961L \$46.	#641 88.	#634 \$60.		
CFA150	100	1.2	1550	CFM Sones	179 1.4	160 1.6	149 2.0	142 2.5	133 3.0	122 3.3						105 3.6	
CFA200	124	1.6	1050	CFM Sones	224 1.5	207 2.0	197 2.3	187 2.7	179 3.4	167 4.0	144 4.5	306.	32.	#981L 46.		#643 116.	
CFA300	204	2.6	1050	CFM Sones	319 2.6	313 3.0	306 3.4	299 3.6	288 3.9	274 4.4	251 4.7	334.	32.				
CFA400	137	1.3	1550	CFM Sones	480 2.0	434 2.3	388 2.8	344 3.3	299 3.8	229 4.5	114 4.8	520.	32.	#982L 66.	#613 118.	#437 214.	
CFA500	207	2.0	1050	CFM Sones	538 3.0	514 3.3	491 3.6	463 4.0	434 4.4	389 5.0	339 5.7	580.	32.				
CFA700	298	2.7	1050	CFM Sones	722 4.5	701 4.7	667 4.8	640 5.0	607 5.2	571 5.6	534 6.2	628.	32.				
CFA900	261	2.5	1550	CFM Sones	918 3.8	901 4.1	877 4.0	842 4.2	793 4.3	725 4.4	636 4.9	736.	32.	#983L 72.			

CFA100 – 300 have plastic grilles. CFA400 – 900 have metal grilles.

CFA100 – 300

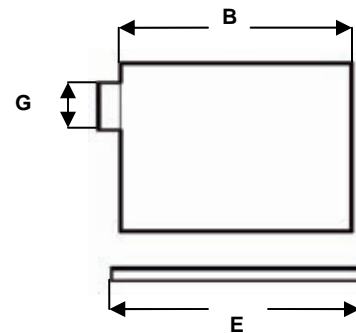


CFA400 - 900



Dimensions

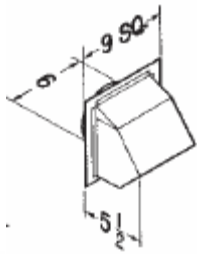
Model	Housing					Outlet	
	A	B	C	D	E	F	G
CFA100-150	12¼	12¼	11¼	14	14	6" DIA.	
CFA200-300	12¼	12¼	11¼	14	14	8" DIA.	
CFA400, 500, 700 & 900	21½	12¼	11¼	23¼	14	18½ 12	4½ 8



FAN DISTRIBUTORS 617 868-1310

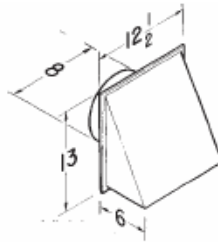
Ceiling & Inline Fan Accessories

Roof & Wall Caps



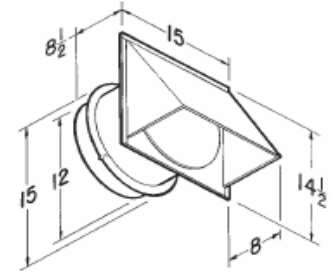
Model 641

- .025 Aluminum - natural finish
- For 6" round duct
- Spring-loaded backdraft damper and bird screen



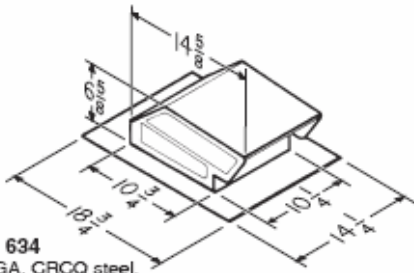
Model 643

- For 8" round duct
- Built-in backdraft damper
- .025 Aluminum - natural finish
- Attachment collar 3-3/8" long



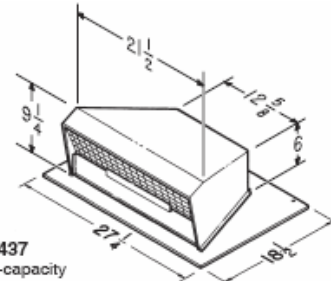
Model 613

- For 12" round duct
- High capacity
- Built-in backdraft damper and bird screen
- .025 Aluminum - natural finish



Model 634

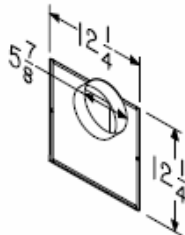
- 24 GA. CRCC steel, black electrically-bonded epoxy finish
- Built-in backdraft damper and bird screen
- For 3 1/4" x 10" or up to 8" round duct



Model 437

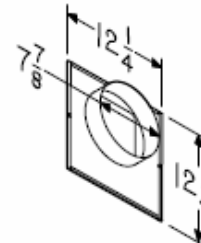
- High-capacity design - up to 1200 CFM
- 24 GA. CRCC steel, black electrically-bonded epoxy finish
- Built-in spring-loaded backdraft damper and bird screen
- For use with High Performance blower system

Inline Adapters



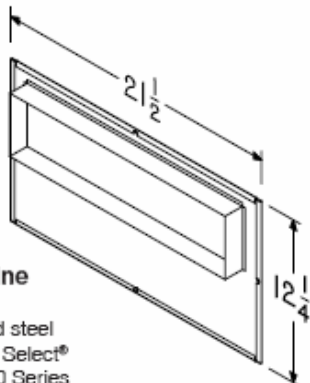
Model 961L In-Line Adapter Kit

- 24 gage galvanized steel
- Fits Broan LoSone Select® L100 & L150 Series 6" round duct intake



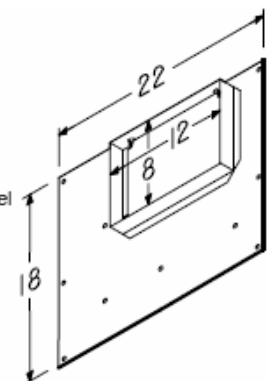
Model 981L In-Line Adapter Kit

- 24 gage galvanized steel
- Fits Broan LoSone Select® L200, L250, & L300 Series 8" round duct intake



Model 982L In-Line Adapter Kit

- 24 gage galvanized steel
- Fits Broan LoSone Select® L400, L500, & L700 Series 4 1/2" x 18 1/2" duct intake



Model 983L In-Line Adapter Kit

- 24 gage galvanized steel
- Fits Broan LoSone Select® L900, L1500 Series 8" x 12" duct intake

Panasonic WhisperCeiling Fans

WhisperCeiling ENERGY STAR® rated exhaust fans

feature totally enclosed AC condenser motors for long-life, energy efficiency and quiet operation. All models are super quiet, energy efficiency and easy to install for intermittent or continuous run ventilation and comply with Green building IAQ standards.



Ceiling Fan

MODEL	SONES	WATTS	AMPS	RPM	CFM	DUCT SIZE	PRICE
FV-05VQ3	<0.3	12.9	0.11	817	50	4"	\$240.
FV-08VQ3	0.3	22.8	0.19	716	80	4"	256.
FV-11VQ3	0.8	30.7	0.26	810	110	4"	288.
FV-15VQ3	0.6	31.4	0.29	673	150	6"	384.

Housings are 7⁷/₈" high



Ceiling Fan With Light

MODEL	SONES	WATTS	AMPS	RPM	CFM	DUCT SIZE	PRICE
FV-08VFL2	0.3	25.2	0.21	775	80	4"	\$384.
FV-11VFL2	1.0	35.9	0.30	894	110	4"	424.
FV-15VFL2	1.2	35.7	0.30	790	150	6"	498.

Housings are 7⁷/₈" high

FAN DISTRIBUTORS 617-868-1310



**BELT DRIVE
NON SPARKING CAST ALUMINUM BLADES FOR THE ELIMINATION
OF HAZARDOUS FUMES SUCH AS PAINT, CHEMICAL AND OTHER
VOLATILE ODORS.**



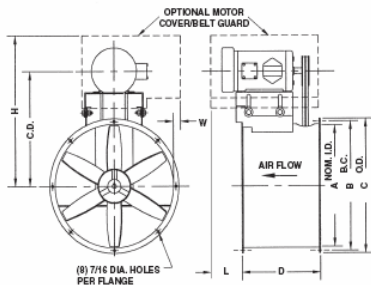
- SEALED BALL BEARINGS.**
- CAN BE MOUNTED IN ANY POSITION.**
- 175° MAXIMUM OPERATING TEMPERATURE.**
- AIR TIGHT DRIVE COMPARTMENT.**
- TEFC & EXPLOSION PROOF MOTORS AVAILABLE.**
- INTEGRAL ROLLED FLANGES.**
- ADJUSTABLE MOTOR BASES.**
- USED EXTENSIVELY FOR PAINT SPRAY BOOTHS.**

TUBEAXIAL FANS ARE NOT SUITABLE FOR QUIET APPLICATIONS.

SPECIFY VOLTAGE AND PHASE WHEN ORDERING.

MODEL NO.	HP	RPM	CFM AGAINST STATIC PRESSURE						OPEN DRIPPROOF LIST PRICE		EXPLOSION PROOF LIST PRICE	
			1/8	1/4	3/8	1/2	5/8	3/4	1 PHASE	3 PHASE	1 PHASE	3 PHASE
B12C	1/3	2195	1345	1170					\$1770.	\$1920.	\$2370.	\$2340.
B12D	1/2	2553	1600	1480	1260				1900.	1880.	2410.	2370
B12E	3/4	2988	1900	1820	1695				1960.	1920.	2540.	2490.
B12F	1	3317	2120	2060	1970	1865			1980.	1980.	2450.	2540.
B15C	1/3	1875	2260	2050	1710				1930.	2080.	2530.	2510.
B15D	1/2	2172	2710	2530	2350	2040			2060.	2040.	2570.	2540.
B15E	3/4	2500	3170	3015	2860	2700	2450		2120.	2080.	2710.	2660.
B15F	1	2775	3550	2410	3275	3130	2990	2765	2260.	2100.	2820.	2750.
B15G	1.5	3215	4150	4035	3915	3795	3670	3550	2280.	2200.	2760.	2760.
B18D	1/2	1830	3375	3000	2325	1250			2140.	2130.	2650.	2620.
B18E	3/4	2115	3990	3700	3345	2700			2210.	2160.	2790.	2740.
B18F	1	2363	4515	4280	3975	3610	3005	1935	2340.	2180.	2900.	2820.
B18G	1.5	2722	5270	5065	4850	4575	4285	3865	2450.	2200.	2910.	2910.
B18H	2	3023	5900	5715	5525	5315	5175	4825	2500.	2250.	3040.	3040.
B24E	3/4	1240	6130	5555	4815				2840.	2800.	3420.	3370.
B24F	1	1392	7025	6505	5960	5200			2970.	2810.	3540.	3460.
B24G	1.5	1631	8395	7945	7510	7055			3090.	2830.	3550.	3550.
B24H	2	1823	9485	9085	8690	8295	7885	7345	3130.	2880.	3640.	3640.
B24J	3	2074	10900	10545	10190	9845	9500	9160	2950.	2950.	3770.	3770.
B30G	1.5	959	9995	9140	7985				4280.	4040.	3750.	3750.
B30H	2	1071	11335	10585	9810				4330.	4080.	4870.	4870.
B30J	3	1230	13225	12585	11915	11240				4150.	4940.	4940.
B30K	5	1476	16105	15575	15040	14480	13915	13310	4250.	4250.	5240.	5240.
B34G	1.5	953	12745	11710	10380	5525			4640.	4390.	5100.	5100.
B34H	2	1061	14375	13510	12480	11045			4680.	4430.	5230.	5230.
B34J	3	1228	16855	16195	15370	11580				4500.	5300.	5300.
B34K	5	1472	20525	19960	19390	18710	17985	17210	4600.	4600.	5590.	5590.

See page 16 for TEFC motors.



MODEL NO.	DIMENSIONS				BLADE DIAM.
	A	B	C	D	
B12	12	13-1/8	14-1/16	12	11
B15	15	16-1/8	17-1/16	12	14
B18	18	19-1/8	20-1/16	12	17
B24	24	25-13/16	26-11/16	16	23
B30	30	31-3/4	32-11/16	16	29
B34	34	35-11/16	37-1/4	16	33



Standard: Cast Aluminum fixed pitch props.

PEERLESS DIRECT DRIVE UTILITY BLOWERS



FORWARD CURVE WHEELS

USED EXTENSIVELY FOR GENERAL VENTILATION OF DUCTED SYSTEMS.
 BOILER ROOMS, RESTAURANTS, SMALL HOODS & RESTROOMS.
 HOUSINGS & BASES ARE 16 GAUGE STEEL FINISHED IN BAKED ENAMEL.
 EXPLOSION PROOF & TEFC MOTORS, ALSO SPARK RESISTANT WHEELS
 ARE AVAILABLE. DISCHARGE CAN BE ADJUSTED TO EIGHT POSITIONS.

ALL UNITS ARE ASSEMBLED & TEST RUN.

See page 16 for Explosion Proof and TEFC Motor Additions

Model No.	HP	RPM	CFM								115V/1PH/60HZ		3Ph. 1Spd	Ship Wt.	
			0"	1/8"	1/4"	3/8"	1/2"	5/8"	3/4"	1"	1-1/4"	1 Speed			2 Speed
D5A	1/4	1725	184	169	144	112						\$560.	\$676.	\$676.	25
D6A	1/6	1140	390	330	250	100						810.	-	-	30
D6B	1/4	1725	595	560	515	470	420	360	300			620.	740.	740.	
D8A	1/6	1140	760	680	620	535	430					850.	-	-	40
D8C	1/3	1725	1150	1085	1050	1005	960	915	865	750	580	700.	860.	830.	
D9C	1/4	1140	1180	1160	1125	1090	1035	963				1040.	-	1070.	65
D11E	3/4	1140	2060	1970	1870	1800	1710	1605	1500	1290	1020	1410.	-	1220.	85

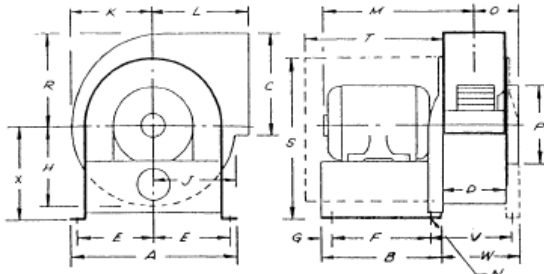
SEE OPTIONAL EQUIPMENT BELOW.

HIGH SPEED UTILITY BLOWERS

FOR USE IN HIGH STATIC PRESSURE SYSTEMS

Model No.	HP	RPM	CFM								1 Phase		Ship Wt.			
			1/2"	3/4"	1"	1-1/4"	1-1/2"	1-3/4"	2"	2-1/4"	2-1/2"	2-3/4"		115/230V	3 Phase 230/460V	
D9D	1/2	1725	X	X	895	810	735	615				\$960.	\$920.	60		
D9E	3/4	1725	X	X	X	1550	1445	1290	1100			1030.	970.	70		
D9F	1	1725	1720	1675	1620	1550	1445	1290	1100			1160.	972.	80		
D11F	1	1725	X	X	X	X	1465	1425	1280	1120	910	1190.	1000.	80		
D11G	1.5	1725	X	X	X	X	1925	1840	1730	1600	1450	1280	1040	1150.	1020.	85
D11H	2	1725	X	X	X	X	2415	2240	2130	1990	1850	1660		1340.	1060.	90

X will overload motor.



OPTIONAL EQUIPMENT

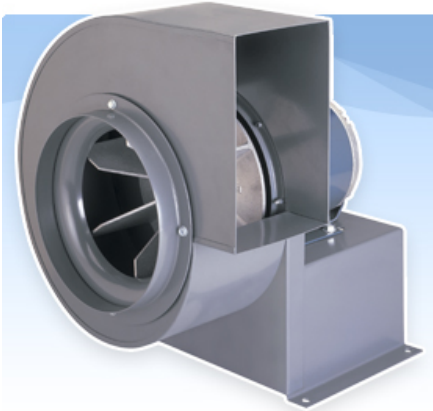
Mod. NO.	Drive Cover	Vib. Pads	Alum. Wheel	Heat Slinger	Acid Resist
D5	\$158.	\$96.	\$90.	\$80.	\$120.
D6	158.	96.	100.	80.	120.
D8	158.	96.	110.	80.	120.
D9	160.	96.	130.	80.	130.
D11	160.	96.	140.	80.	130.

Mod. No.	Wheel Size	OUTLET		INLET													
		A	B	C x D	E	F	G	H	J	K	L	M*	N	O	P	R	X
D5	4.75 x 2.5	8 ⁵ / ₈	7	5 ¹ / ₂ x 3 ³ / ₈	3 ³ / ₄	6	1/2	3 ¹ / ₂	3 ⁵ / ₈	3 ³ / ₄	4 ¹ / ₂	11 ¹ / ₂	3/8	2 ³ / ₄	4	4 ⁵ / ₈	5 ¹ / ₄
D6	6.25 x 3	9 ⁵ / ₈	8	7 ³ / ₈ x 4 ¹ / ₄	4 ¹ / ₄	7	1/2	5	4	6	5	11 ⁵ / ₈	3/8	3 ⁵ / ₈	6	7 ¹ / ₈	8 ¹ / ₂
D8	7 ³ / ₄ x 3-7/8	11	8	8 ¹ / ₄ x 5 ¹ / ₂	5	7	1/2	6	4 ⁵ / ₈	6 ¹ / ₄	6 ³ / ₈	12 ¹ / ₂	3/8	3 ³ / ₄	8	8	8 ¹ / ₂
D9	9 x 4.5	12 ¹ / ₂	8	10 ³ / ₄ x 6 ¹ / ₂	5 ⁵ / ₈	7	1/2	6 ³ / ₄	5 ⁵ / ₈	7 ³ / ₄	7 ¹ / ₂	13	3/8	4 ³ / ₈	9	9 ¹ / ₄	9 ⁵ / ₈
D11	10-5/8 x 5 ¹ / ₄	14 ³ / ₄	9	11 ³ / ₄ x 8	6 ³ / ₈	7 ¹ / ₂	3/4	8	6 ³ / ₄	9 ¹ / ₂	8 ¹ / ₂	13 ³ / ₈	3/8	5	10	10 ³ / ₄	11 ³ / ₄

*M DIMENSION WILL VARY WITH TYPE MOTOR USED. •D9D WHEEL - 9x3, D11F WHEEL - 10-5/8x3, D11G WHEEL - 10-5/8x4

PEERLESS – RADIAL BLADE BLOWERS

DIRECT DRIVE



APPLICATION: Used on small kitchen hoods where filters may or may not be installed; also used where air contains dirt, lint or foreign material as wheel is self cleaning type.

- FEATURES: 16 GAUGE STEEL CONSTRUCTION.**
- NON SPARKING CAST ALUMINUM SELF CLEANING WHEEL.**
- FINISHED IN BAKED ENAMEL.**
- EIGHT DISCHARGE POSITIONS AVAILABLE.**
(SEE PAGE 15)
- AMCA TESTED AND RATED.**

WHEN ORDERING: SPECIFY, MODEL – VOLTAGE – PHASE – ROTATION & DISCHARGE

MODEL NO.	HP	RPM	CFM - AGAINST STATIC PRESSURE												Open Motor		EXP. PROOF		
			0"	1/8"	1/4"	3/8"	1/2"	5/8"	3/4"	1"	1.25"	1.5"	1.75"	2"	2.25"	1 Phase	3 Phase	1 PH.	3PH.
KE-8	1/4	1725	550	510	470	425	365	275	150							\$500.	\$660.	\$980.	\$1010.
KE-9	1/4	1725	880	825	765	705	635	565	480	200						520.	680.	990.	1030.
KE-11	1/2	1725	1430	1380	1335	1275	1225	1165	1100	945	730	430				750.	820.	1310.	1280.
KE12	1	1745	2375	2300	2220	2140	2060	1975	1890	1700	1485	1185	750	350		1270.	1090.	1900.	1860.
KE14	2	1745	3420	3325	3230	3125	3025	2925	2820	2959	2350	2045	1620	1010	640	1530.	1250.	-	2100.

FEATURES:

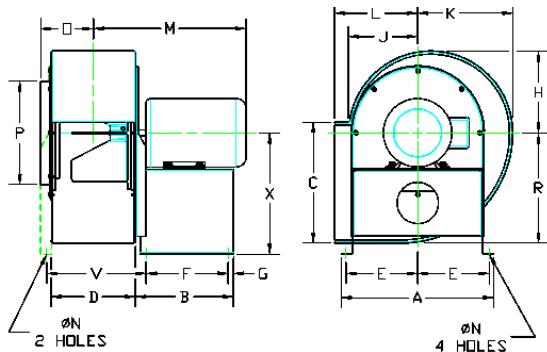
General Construction – Housings and bases are 16-gauge steel with welded joints. Wheels are cast aluminum, dynamically balanced and are self cleaning to eliminate unbalance or reduced airflow. Blowers are finished with baked enamel. Custom Features – Weather proof drive covers to cover the motor are available if unit is mounted outside. Also such extras as vibration pads, discharge dampers, acid resisting paint and other special features are available for special requirements.

SEE PAGE FOR OTHER SPECIAL MOTORS.

OPTIONS

Model NO.	Motor Cover	Vib. Pads	Acid Resis. Coat	2 SPEED MOTOR*	
				1 PHASE	3 PHASE
KE-8	\$100.	\$96.	\$120.	\$120.	–
KE-9	110.	96.	130.	120.	–
KE-11	114.	96.	140.	180.	–
KE-12	130.	144.	160.	500.	530.
KE-14	130.	144.	180.	--	680.

*1 PHASE – 1725/1140 RPM. 3 PHASE – 1800/900 RPM.



Certified Dimension prints furnished upon request

Rotation and Discharge

Standard units are clockwise rotation bottom horizontal discharge as pictured in dimension diagram. However any rotation or discharge will be furnished when so specified. Housing and wheel rotation may be changed at time of installation to any one of eight different discharge directions.

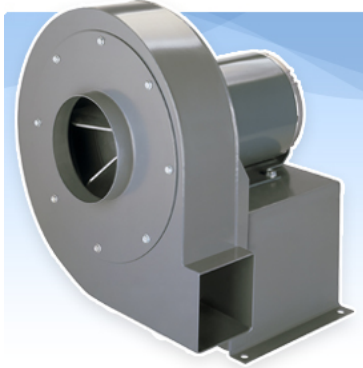
BLOWER DIMENSIONS

MODEL NO.	WHEEL	BORE	Outlet																Inlet	
			A	B	C	D	E	F	G	H	J	K	L	M*	N	O	P	R	V	X
KE-8	7 3/4 x 4	1/2	11	8	8 1/4	5-3/8	5	7	1/2	6	4-5/8	6 3/4	6-7/8	10 3/4	3/8	3 3/4	8	14-5/8	8 1/2	
KE-9	9 x 5	1/2	12-1/8	8	10 3/4	6 1/2	5-5/8	7	1/2	6 3/4	5-5/8	7 3/4	7-1/8	11 3/4		4-5/16	9	9 1/4		9-3/8
KE-11	10-7/8x5-5/8	5/8	14 3/4	9	11 3/4	8	6-7/8	7 1/2	3/4	8	6 3/4	9-1/8	8-1/8	13 3/4		5-1/16	10	10 3/4		11 3/4
KE-12	12 1/2 x 7 1/2	7/8	16-3/8	10 1/2	13 3/4	9-5/8	7-3/8	8 1/4	7/8	10-1/8	8 1/2	11 1/2	10 1/2	15-3/16	9/16	6-3/8	13 3/4	13 3/4	11-1/8	17
KE-14	13 1/2 x 8-1/8	7/8	17-5/8	10 1/2	14-5/8	10 1/4	8	8 3/4	7/8	11-1/8	9-3/8	12 5/8	11-3/8	16 3/4		7	14 1/2	15-5/8	12 1/4	17

*M VARIES WITH MOTOR FRAME SIZE

PEERLESS PRESSURE BLOWERS

DIRECT DRIVE



Pressure blowers are generally used on industrial applications for small exhaust systems where air is laden with dust or grit and also for supplying high pressure air for conveying or cooling.

NON-SPARKING RADIAL BLADE ALUMINUM WHEEL

DYNAMICALLY BALANCED

ARC WELDED 16 GAUGE STEEL HOUSINGS

ODP, TEFC & EXPLOSION PROOF MOTORS AVAILABLE

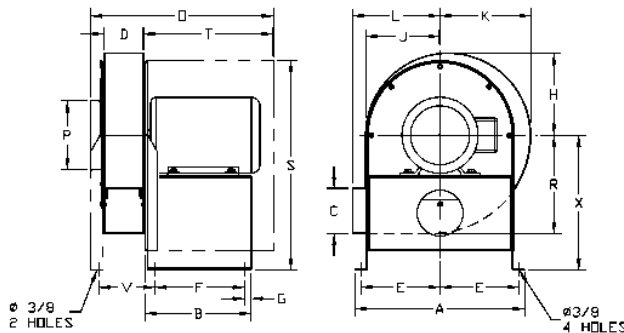
AMCA TESTED AND RATED PERFORMANCE

WHEN ORDERING: SPECIFY, MODEL – VOLTAGE & PHASE - ROTATION & DISCHARGE

Model No.	HP	RPM	CFM – AGAINST STATIC PRESSURE														OPEN MOTOR			
			1"	1½"	2"	2½"	3"	3½"	4"	5"	6"	7"	8"	9"	10"	11"	12"	1 Phase	3 Phase	
PW-8	1/3	3600	295	265	230	200	165	125											\$600.	\$590.
PW-9	1/3	3600	525	495	470	440	405	380	330	200									620.	610.
PW-11	1	3600	800	770	740	705	680	640	600	500	400	300							880.	790.
PW-12	2	3600	1190	1160	1130	1100	1065	1030	1000	930	860	780	690	575	410				1210.	1110.
PW-14	5	3600	2280	2230	2180	2130	2070	2020	1960	1840	1720	1570	1400	1240	1080	880	670		-	1290.

OPTIONAL EQUIPMENT

Model No.	Motor Cover	Vib. Pads	Acid Resist. Coat	Explosion Proof Motor	
				1 Phase	3 Phase
PW-8	\$100.	\$96.	\$130.	\$300.	\$ -
PW-9	110.	96.	130.	300.	-
PW-11	116.	96.	140.	800.	630.
PW-12	130.	144.	160.	960.	650.
PW-14	130.	144.	180.	-	950.



Certified Dimension prints furnished upon request

ROTATION AND DISCHARGE: Furnished for clockwise rotation, bottom horizontal discharge unless otherwise specified. All models may be changed in the field for either rotation or any discharge position.

Inlet

BLOWER	WHEEL	BORE	Outlet																	
			A	B	C	D	E	F	G	H	J	K	L	O	P	R	X	S	T	V
PW- 8	7-3/4 X 2-1/4	1/2	11	8	3	3	5	7	1/2	5-3/8	4-7/8	5-7/8	5-7/8	16	4	6-5/8	8-1/2	13-1/8	12	...
PW- 9	9 X 2-3/4	1/2	12-1/8	8	3-1/2	3-1/2	5-5/8	7	1/2	6-3/8	5-3/4	6-7/8	6-3/4	20-3/4	5	7-1/2	9-3/8	14-5/8	16	...
PW- 11	10-5/8 X 3	5/8	14-3/4	9	4	3-1/2	6-7/8	7-1/2	3/4	7-1/4	6-1/2	8	7-5/8	20-3/4	6	8-5/8	11-3/4	18-1/4	16	...
PW- 12	12-1/2 X 3	7/8	17	8	5	4	8	6-1/2	3/4	8-1/4	7-1/2	9	9-5/8	20-1/8	7	10	10-5/8	18-3/8	15	...
PW- 14	13-1/2 X 4-3/8	1-1/8	17-5/8	11-1/4	7-1/8	5-3/4	8	9-9/16	1	10-1/2	9-5/8	11-3/8	11	22	8	11-1/2	12-5/8	21-1/2	15	7-1/4

FAN DISTRIBUTORS 617-868-1310

PEERLESS HIGH PRESSURE BLOWERS

RADIAL BLADE – BELT DRIVE

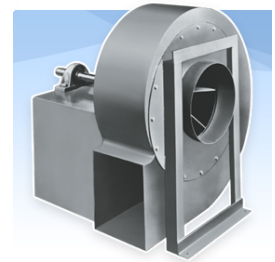
ARRANGEMENT #10, COMPACT UNIT.

TYPE "M" WHEEL FOR SAWDUST & PARTICLE LADEN AIR.

300° OPERATING TEMPERATURE. UP TO 500° WITH HEAT SLINGER

ADJUSTABLE PULLEY TO 10 HORSEPOWER.

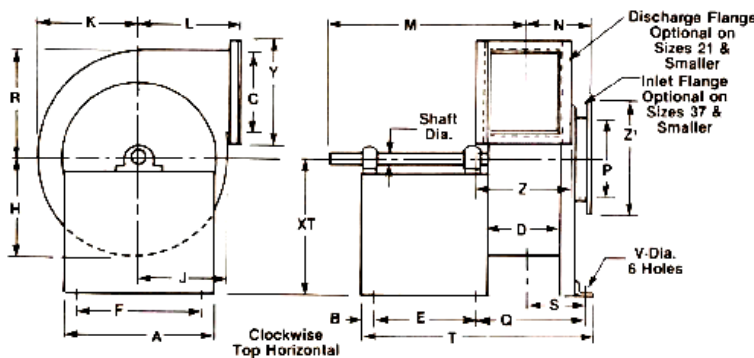
PERFORMANCE RATINGS UP TO 20" STATIC PRESSURE.



See page 16 for special motors.

MODEL NO.	HP	*RPM	CFM AGAINST STATIC PRESSURE										PRICE		DRIVE COVER	VIB. PADS	Less Motor And Drive			
			1"	2"	3"	4"	5"	6"	8"	10"	12"	1Φ	3Φ							
M-09	F	1	1761	1580	1320	1145	986	700								\$2980.	\$2790.	\$290.	\$144. #R-1 BLACK	\$2360.
	G	1½	1890	1840	1585	1410	1235	1060	880							2950.	2820.			
	H	2	2020	2025	1850	1675	1500	1400	1230							3170.	2880.			
	J	3	2210	2380	2200	2025	1850	1760	1600	1320							3010.			
	K	5	2560				2465	2300	2200	1940	1760	1500					3140.			
M-11	F	1	1850	1850	1570	1185										3450.	3260.	350.	144. #R-1 RED	\$2840.
	G	1½	1440	2235	1970	1580	1320									3410.	3290.			
	H	2	1515	2500	2235	1975	1710	1450								3640.	3350.			
	J	3	1655	3025	2760	2500	2235	1975	1710								3480.			
	K	5	1885	3680	3420	3200	3020	2760	2630	2235	1835						3610.			
M-13	G	1½	992	2750	2210	1660										4020.	3890.	410.	168. #R-2 BLACK	\$3440.
	H	2	1210	3120	2570	2210	1830									4240.	3960.			
	J	3	1306	3680	3305	2900	2570	2200	1750								4150.			
	K	5	1470	4550	4200	3850	3490	3200	2940	2210							4210.			
	L	7½	1610		4960	4600	4300	4100	3700	3310	2700						4490.			
M-15	J	3	1071	4400	3670	3200	2690										5210.	520.	168. #R-2 BLACK	\$4500.
	K	5	1185		4890	4400	3910	3430	2940								5270.			
	L	7½	1300		5870	5380	4890	4600	4160	3420							5550.			
	M	10	1400			6110	5700	5400	5100	4400	3500	4400					5830.			
	N	15	1570					6600	6360	5650	5200	4400					6610.			
M-17	K	5	985		5400	4750	4200	3500									6010.	600.	168. #R-2 BLACK	\$5240.
	L	7½	1080		6700	6100	5450	5030	4400								6290.			
	M	10	1155		7550	7000	6500	6000	5400	4400							6650.			
	N	15	1285			8500	7900	7540	7100	6350	5340	4400					7200.			
	O	20	1400				9200	8800	8200	7540	6800	5970					7860.			
M-19	L	7½	920		7500	6670	5890	5100	4400								7530.	720.	168. #R-2 RED	\$6470.
	M	10	980		8630	7850	7100	6300	5890								7890.			
	N	15	1090		10200	9500	9050	8300	7850	6670	5100						8440.			
	O	20	1165			11000	10300	9850	9300	8240	7060	5900					8950.			
	P	25	1240				11400	10990	10200	9420	8600	7460					9360.			

*@4.0" S.P. otherwise @ lowest S.P. shown.



Type "M" – Material Handling Wheel



Size	Wheel Dia.	Shaft Dia.	A	B	C	D	E	F	G	H	J	K	L	M	N	P	Q	R	S	T	V	X	Y	Z
9	15½	1-7/16	17¼	1	9	7½	17½	14½	135/16	11 1/16	9 1/16	12 3/16	11 11/16	28½	6⅞	9¼	9⅞	12¼	4 15/16	28½	9/16	18⅞	12	10½
11	19½	1-11/16	21⅝	1⅜	11	9 1/16	17	19¼	16½	13¼	11¼	14⅞	13¾	30	7⅝	11¼	11⅞	14¼	5 11/16	31	9/16	22½	14	12 1/16
13	22½	1-15/16	21⅝	1⅜	13	10½	17	19¼	19½	15⅝	13⅞	17 9/16	15⅞	31	8⅞	13¼	13⅞	17¼	6 7/16	32½	9/16	22 11/16	17	14½
15	26½	2-3/16	25½	7/8	15	12⅞	22¼	23¼	22½	18⅞	16 1/16	20 5/16	19 1/16	36 3/16	9 3/16	15¼	16¼	19¼	9⅞	40½	11/16	25	19	16⅞
17	29½	2-3/16	27	7/8	17	13¾	22¼	24¼	25½	20⅞	18 5/16	23 1/16	21⅞	37	11 1/16	17¼	17⅞	21¼	10 3/16	42⅞	11/16	28	21	17¾
19	33	2-7/16	29	7/8	19	15⅝	24¼	26¼	28½	22⅞	20 5/16	25 11/16	23⅞	41⅞	11 13/16	19¼	20½	24¼	11½	46¼	11/16	31	24	20⅞

PEERLESS FORWARD CURVE BLOWERS

BELT DRIVE



BALL BEARING BLOWER AND MOTOR CONSTRUCTION

VARIABLE DRIVE SHEAVE – 1725 RPM MOTORS

AMCA CERTIFIED PERFORMANCE

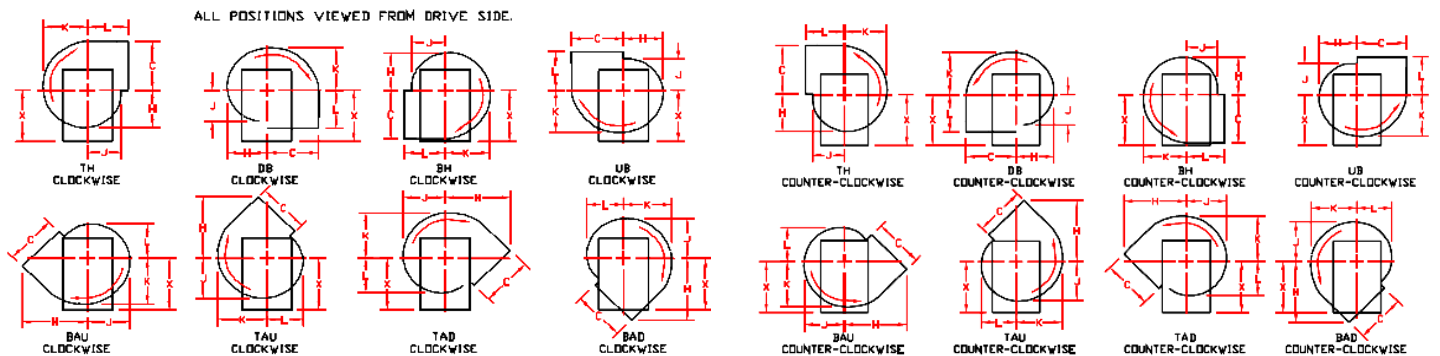
LOW NOISE LEVEL OPERATION

FORWARD CURVE WHEEL DESIGN IS FOR USE IN CLEAN AIR SYSTEMS THAT HAVE CONSTANT STATIC PRESSURE. STATIC FLUXUATION CAN RESULT IN MOTOR OVERLOAD. A BACKWARD CURVED BLOWER IS RECOMMENDED FOR HIGH OR INCONSISTANT STATIC PRESSURE.

Specify: Voltage – Phase – Rotation & Discharge Position. *@ .25" Static Pressure Price

MODEL NO	HP	INLET DIA.	*RPM	CFM							1 PHASE	3 PHASE	Weather Cover	Vib. Pads	
				.25"	.5"	.75"	1.0"	1.5"	2.0"	2.5"					3.0"
8A	1/4	8"	1200	650	600	560	500					\$880.	\$1050.	\$108.	\$96.
8B	1/4		1300	800	720	680	650	540				880.	1050.		
8C	1/3		1400	850	820	770	740	650	560			920.	1050.		
8D	1/2		1600	1000	960	920	890	820	750	650		1030.	1100.		
8E	3/4		1800	1200	1140	1100	1060	980	920	850	780	1090.	1140.		
9A	1/4	9"	800	830	770	680	600					950.	1120.	114.	96.
9B	1/4		900	1000	930	840	780					950.	1120.		
9C	1/3		1100	1090	1080	980	920	770				990.	1120.		
9D	1/2		1200	1200	1180	1120	1110	1000	890			1100.	1170.		
9E	3/4		1400	1400	1370	1320	1310	1220	1130	1060		1160.	1210.		
11B	1/4	10"	700	1145	1020	954	827					1000.	1170.	118.	96.
11C	1/3		800	1275	1180	1080	1018					1040.	1170.		
11D	1/2		900	1520	1400	1350	1270	1080				1150.	1220.		
11E	3/4		1100	1750	1660	1600	1520	1400	1250			1210.	1260.		
11F	1		1200	1910	1890	1785	1700	1600	1500			1340.	1270.		
12C	1/3	13 1/4"	600	1700	1520	1350	1190					1390.	1520.		
12D	1/2		700	1950	1850	1700	1530					1500.	1570.	146.	144.
12E	3/4		800	2300	2100	2000	1900	1640				1570.	1610.		
12F	1		900	2500	2400	2380	2200	1900	2000			1700.	1620.		
12G	1.5		1000	2920	2850	2740	2680	2420	2230	2000		1780.	1630.		
15D	1/2	16 1/8"	500	2550	2400	2170	1920					1790.	1860.		
15E	3/4		600	3000	2820	2600	2440	2040				1850.	1900.	176.	144.
15F	1		700	3300	3200	3000	2820	2500				1990.	1910.		
15G	1.5		800	3800	3750	3580	3400	3200	2820			2000.	1920.		
15H	2		900	4200	4100	4000	3840	3600	3330	3070	2800	2170.	1930.		

Rotation and discharge position is determined from the motor side of the blower.



FAN DISTRIBUTORS 617-868-1310

OPTIONAL MOTORS & ACCESSORIES

MOTOR OPTIONS ADD TO LIST PRICE OF UNIT

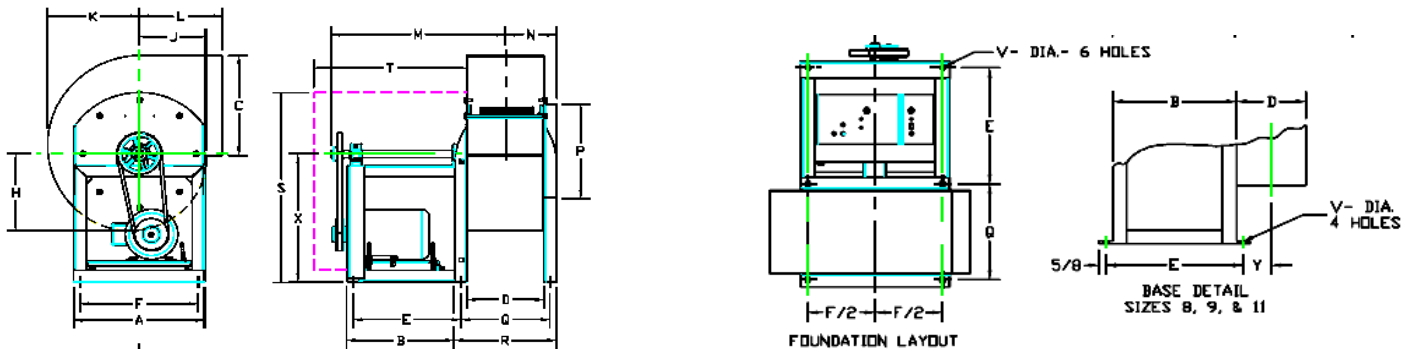
OPTION	HP▶	1/6	1/4	1/3	1/2	3/4	1	1.5	2	3	5	7.5	10
TWO SPEED	2 WINDING 1725/1140 1Φ	-	\$120.	\$160.	\$178.	\$260.	\$500.						
	1 WINDING 1800/900 3Φ						530.	580.	680.	700.	860.	1200.	1230.
	2 WINDING 1800/1200 3Φ					530.	700.	890.	1010.	1180.	1970.	2550.	*2750.
TOTALLY ENCL. FAN COOLED	1725 & 3450 115/230/1Φ	260.	260.	260.	190.	200.	260.	280.	390.				
	1725 & 3450 •230/460 3Φ	90.	90.	140.	150.	150.	260.	260.	260.	290.	330.	330.	320.
EXPL. PROOF	1725 115/230 1Φ	490.	490.	630.	630.	650.	690.	1650.					
	1725 •230/460 3Φ	410.	410.	540.	540.	600.	830.	830.	910.	970.	1220.	1370.	1260.

•Can be used on 208 volts. *460 Volt only.

ACCESSORIES

BLOWER SIZE	8	9	11	12	15
Spark Resistant Type B	\$200.	\$200.	\$200.	\$360.	\$400.
Acid Resistant Coating	200.	200.	200.	240.	270.
Discharge Damper	170.	170.	170.	170.	220.

DIMENSIONS



FAN WHEEL SIZE	WHEEL DIA.	SHAFT DIA.	TH, DB, BH, UB STRAIGHT DISCH.								BAU, TAU, TAD, BAD ANGULAR DISCH.								M	N	P	Q	R	S	T	V	X	Y	F
			A	B	C	D	E	F	H	J	K	L	H	J	K	L													
8	7-3/4	3/4	9-1/8	13	8-1/4	5-3/8	14-1/4	7-1/2	6	4-5/8	6-3/4	6-7/8	10-3/8	6-1/4	7-3/8	5-1/4	20-1/8	3-3/4	8	-	-	18	18-1/2	7/16	12	2-3/16			
9	9	3/4	10-3/8	13	10-3/4	6-1/2	14-1/4	8-3/8	6-3/4	5-5/8	7-3/4	7-1/8	11-5/8	7-1/2	8-1/4	6-1/8	20-3/4	4-5/16	9	-	-	18	18-1/2	7/16	12	2-3/4			
11	10-1/2	3/4	12-7/8	13	11-3/4	8	14-1/4	10-3/4	7-7/8	6-3/4	9-1/8	8-1/16	13-1/4	8-7/8	9-5/8	7-1/8	21-1/2	5-1/8	10	-	-	20-1/2	18-1/2	7/16	14	3-1/2			
12	12-1/4	1	16-3/8	13-1/2	13-1/4	9-5/8	13-1/2	14-3/4	10-1/8	8-1/2	11-1/2	10-1/2	16-5/8	10-3/4	12-1/2	9-1/8	23-7/8	6-3/8	13-1/4	11-1/4	12-3/4	25-1/4	20	1/2	17	-			
13	13-1/2	1	17-5/8	13-1/2	14-5/8	10-3/4	13-1/2	16	11-1/8	9-3/8	12-5/8	11-3/8	18-1/4	11-7/8	13-3/4	10	24-3/8	7	14-1/2	12-3/8	13-7/8	25-7/8	20	1/2	17	-			
15	15	1	19-1/4	15-1/2	16-1/4	11-3/4	15-1/2	17-5/8	12-3/8	10-3/8	14-1/8	12-3/8	20-1/8	13-1/4	15-1/4	11-1/8	26-7/8	7-1/2	16-1/8	13-3/8	14-7/8	27-5/8	22	1/2	17-7/8	-			

FAN DISTRIBUTORS 617-868-1310

PEERLESS – NON-OVERLOADING BELT DRIVE ULTRAFAN-PAK BLOWERS ARRANGEMENT #10 SWSI CLASS 1



AMCA CERTIFIED PERFORMANCE TO 5" OF STATIC PRESSURE

BAKED EPOXY POWDER COAT STANDARD.

SELF-ALIGNING BALL BEARING PILLOW BLOCKS, 100,000 HRS.

GROUND & POLISHED SOLID STEEL SHAFT.

ALL WELDED HEAVY GAUGE HOUSINGS & FRAMES.

CW OR CCW ROTATION AVAILABLE IN 8 45° POSITIONS.

USED EXTENSIVELY FOR KITCHEN HOOD VENTILATION,

MODEL NO.	HP	*RPM @ .5"	CFM AGAINST STATIC PRESSURE										Blower		Weather Cover	Vib. Pads	Less Motor & Drive			
			.25"	.5"	.75"	1"	1.5"	2"	2.5"	3"	3.5"	(4" 4.5" 5")	1Ø	3Ø						
105	C	1/3	2050	1399	1275	1208	1130	890	700						(UP TO 1500 CFM @ 5" 2 HP MAX.)	\$1320.	\$1420.	\$120.	\$96.	\$970.
	D	1/2	2400	1650	1600	1500	1400	1335	1020	820						1400.	1470.			
	E	3/4	2750	1850	1800	1760	1700	1540	1399	1250	1050	800				1460.	1510.			
	F	1	3078	2100	2035	2000	1915	1830	1660	1520	1350	1200				1600.	1520.			
122	D	1/2	1725	2100	1973	1850	1716	1430							(UP TO 2000 CFM @ 5" 3 HP MAX.)	1580.	1650.	146.	144.	1160.
	E	3/4	1975	2450	2300	2200	2100	1870	1600	1250						1640.	1690.			
	F	1	2170	2650	2600	2500	2400	2190	1990	1720	1390					1780.	1590.			
	G	1.5	2500		3050	2940	2890	2700	2500	2300	2100	1820				1800.	1600.			
135	D	1/2	1460	2350	2220	2010	1870	1470							(UP TO 2400 CFM @ 5" 3 HP MAX.)	1760.	1830.	154.	144.	1340.
	E	3/4	1680	2760	2640	2480	2310	2040	1600							1820.	1870.			
	F	1	1850	3100	2940	2800	2680	2410	2120	1780						1960.	1770.			
	G	1.5	2120	3550	3450	3340	3200	2960	2730	2500	2200					1970.	1790.			
150	E	3/4	1450	3330	3070	2800	2570	2170							(UP TO 3000 CFM @ 5" 5 HP MAX.)	1940.	1980.	176.	144.	1450.
	F	1	1650	3700	3550	3250	3050	2650	2200							2070.	1990.			
	G	1.5	1900	4300	4100	3950	3700	3330	3000	2650	2000					2080.	2000.			
	H	2	2100		4600	4400	4200	3840	3570	3300	2900	2500				2220.	2010.			
165	F	1	1400	4200	3900	3590	3420	2810	2170						(UP TO 3500 CFM @ 5" 5 HP MAX.)	2270.	2080.	220.	144.	1650.
	G	1.5	1580	4950	4600	4350	4060	3650	3200	2660						2280.	2100.			
	H	2	1800		5200	4950	4700	4300	3900	3430	3000					2420.	2140.			
	J	3	1998		6100	5900	5650	5200	4900	4600	4150	3800				2300.	2300.			
182	F	1	1180	4540	4250	3970	3610	3030							(UP TO 4400 CFM @ 5" 5 HP MAX.)	2290.	2110.	276.	168.	1680.
	G	1.5	1350	5300	4940	4800	4400	3970	3400							2300.	2130.			
	H	2	1510	5750	5650	5400	5200	4560	4170	3610						2450.	2170.			
	J	3	1710		6500	6400	6200	5700	5300	4900	4370	3800				2330.	2330.			
200	G	1.5	1150	6030	5600	5340	5000	4300	3300						(UP TO 5000 CFM @ 4.5" 5 HP MAX.)	2630.	2510.	290.	168.	2050.
	H	2	1290	6600	6400	6100	5800	5100	4500	3700						2820.	2540.			
	J	3	1480	7700	7450	7100	6950	6400	5900	5300	4600					2700.	2700.			
	K	5	1700					8000	7600	7250	6700	6150				2820.	2820.			
222	G	1.5	955	6900	6500	5950	5450	4450							(UP TO 6500 CFM @ 5" 7.5 HP MAX.)	3290.	3150.	376.	168.	2670.
	H	2	1055	7600	7350	6850	6400	5600	4450							3470.	3190.			
	J	3	1200	9000	8600	8300	7850	7000	6250	5370						3320.	3320.			
	K	5	1430			10100	9900	9250	8500	7900	7000	6300				3440.	3440.			
245	G	1.5	810	7850	7300	6600	6000	4490							(UP TO 7950 CFM @ 5" 10 HP MAX.)	3610.	3480.	380.	168.	3020.
	H	2	890	8900	8250	7650	7200	5880								3800.	3520.			
	J	3	1030	10000	9800	9200	8850	7700	6600							3710.	3710.			
	L	7.5	1387		12000	11000	10500	10000	9200	8500	7550					3770.	3770.			
270	H	2	925	9230	8500	8000	7500	6280	5030						(UP TO 9200 CFM @ 5" 10 HP MAX.)	4550.	4270.	400.	168.	3730.
	J	3	1075	10850	10100	9700	9150	8000	7120	6200						4370.	4370.			
	K	5	1250		12500	12000	11500	10500	9600	8700	8100	7200				4490.	4490.			
	L	7.5	1500			14000	13600	12700	12000	11500	10500	9600				4770.	4770.			
300	H	2	750	10500	9700	8800	8000								(UP TO 12000 CFM @ 5" 15 HP MAX.)	5120.	4840.	466.	168.	4310.
	J	3	890	12000	11400	10800	10000	8750	7700							4940.	4940.			
	K	5	1050	15000	14000	13500	13000	11700	10700	9500	8500					5060.	5060.			
	L	7.5	1230	17000	16600	16000	15500	14470	13400	12400	11400	10700				5340.	5340.			
330	J	3	750	13800	12800	11900	11200								(UP TO 14000 CFM @ 5" 15 HP MAX.)	6120.	6120.	580.	168.	5490.
	K	5	900	16700	15700	15200	14500	12700	11400	10100						6250.	6250.			
	L	7.5	1000		18700	18000	17000	16000	14900	13500	12000	10700				6530.	6530.			
	M	10	1150		20800	20500	19500	18500	17000	16000	14900	13600				6800.	6800.			

See page 16 for two speed, TEFC & explosion proof motors.

FAN DISTRIBUTORS 617-868-1310

PEERLESS ULTRA-FANPACK

ACCESSORIES

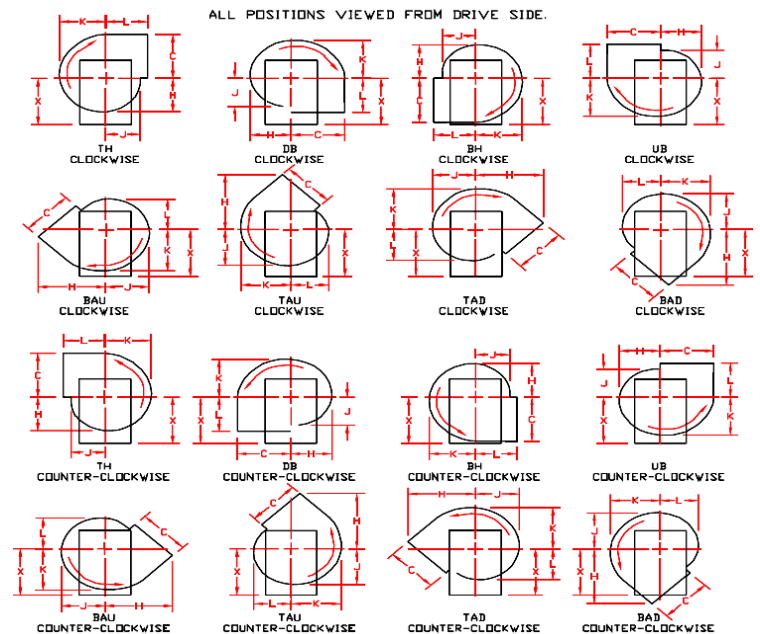
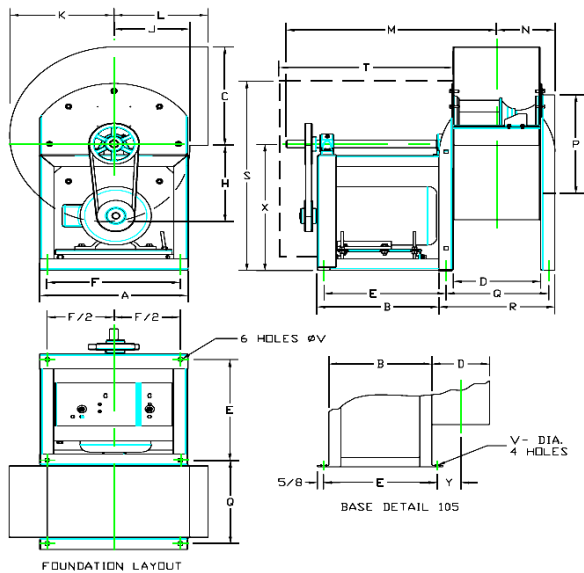
OPTION	Blower size											
	105	122	135	150	165	182	200	222	245	270	300	330
SPARK TYPE B	\$290.	360.	380.	400.	470.	520.	730.	910.	910.	1220.	1350.	1750.
RESIST. TYPE C	\$130.	130.	130.	140.	140.	140.	180.	190.	210.	370.	430.	500.
ACID RESIST. COAT	\$200.	260.	260.	260.	300.	300.	300.	390.	390.	390.	450.	500.
DISCH. DAMPER	\$170.	170.	180.	210.	210.	260.	290.	320.	380.	400.	430.	470.

Spark Resistant – Type B: AMCA standards require the blower to have the wheel and ring about the opening through which the shaft passes of non-ferrous material. Blowers for this condition are furnished with a non-ferrous wheel and rubbing plate around the shaft opening.

Spark Resistant – Type C: AMCA standards require the blower to be so constructed that a shift of the wheel or shaft will not permit two ferrous parts of the blower to rub or strike. Blowers for this condition will be furnished with non-ferrous rubbing plate around shaft opening and a non-ferrous inlet cone.

See page 16 for two speed, totally enclosed & explosion proof motor additions.

DIMENSIONS



Note: Letters "C" and "D" are outside dimensions.
 **"C" dimension on 105 extends 1-1/16 beyond center-line.

FAN SIZE	WHEEL DIA.	SHAFT DIA.	OUTLET							INLET															
			A	B	C*	D	E	F	TH, DB, BH, UB STRAIGHT DISCH.				BAU, TAU, TAD, BAD ANGULAR DISCH.				M	N	P	Q	R	S	T	V	X
									H	J	K	L	H	J	K	L									
105	10-1/2	3/4	12-7/8	13	11-3/4	8	14-1/4	10-3/4	7-7/8	6-3/4	9-1/8	8-1/16	13-1/4	8-7/8	9-5/8	7-1/8	19-5/8	6	12-7/8	-	-	20-1/2	17	7/16	14
122	12-1/4	1	16-3/8	13-1/2	13-1/4	9-5/8	13-1/2	14-3/4	10-1/8	8-1/2	11-1/2	10-1/2	16-5/8	10-3/4	12-1/2	9-1/8	23-7/8	6-3/8	13-1/4	11-1/4	12-3/4	25-1/4	20	1/2	17
135	13-1/2	1	17-5/8	13-1/2	14-5/8	10-3/4	13-1/2	16	11-1/8	9-3/8	12-5/8	11-3/8	18-1/4	11-7/8	13-3/4	10	24-3/8	7	14-1/2	12-3/8	13-7/8	25-7/8	20	1/2	17
150	15	1	19-1/4	15-1/2	16-1/4	11-3/4	15-1/2	17-5/8	12-3/8	10-3/8	14-1/8	12-3/8	20-1/8	13-1/4	15-1/4	11-1/8	26-7/8	7-1/2	16-1/8	13-3/8	14-7/8	27-5/8	22	1/2	17-7/8
165	16-1/2	1	21-3/8	15	17-3/4	13	15-1/2	19-3/4	13-5/8	11-3/8	15-1/2	13-3/8	21-7/8	14-5/8	16-3/4	12-1/4	27-1/2	8-1/2	17-7/8	14-1/2	17	30-1/8	22	1/2	19-1/2
182	18-1/4	1-3/16	23-1/8	17	19-5/8	14-1/4	17-1/2	21-1/2	15	12-5/8	17-1/8	14-5/8	24-1/8	16	18-1/2	13-5/8	30-5/8	9-1/8	19-5/8	15-3/4	18-1/4	33-3/8	25	1/2	21-7/8
200	20	1-3/16	25	17	21-1/2	15-7/8	17	23-3/8	16-1/2	13-3/4	18-3/4	15-3/4	26-3/8	17-5/8	20-3/8	14-7/8	31-1/2	10	21-1/2	17-7/8	20-1/8	36-1/4	25	1/2	23-3/4
222	22-1/4	1-3/16	27-3/8	16-1/2	24	17-3/8	17	25-3/4	18-1/4	15-1/4	20-7/8	17-1/4	29	19-1/2	22-5/8	16-1/2	32-3/4	10-5/8	23-7/8	19-3/8	22-5/8	39-3/4	26	1/2	26-1/8
245	24-1/2	1-7/16	30-1/4	16-1/2	26-1/4	19-1/4	16-3/4	23-5/8	20-1/8	16-7/8	23	19-7/8	32-1/2	21-1/2	24-7/8	18-1/4	33-5/8	11-3/4	26-3/8	21-1/4	24-1/2	42-7/8	26	1/2	27-3/4
270	27	1-7/16	33	16-1/2	29	21-1/4	16-1/2	26-1/4	22-1/8	18-1/2	25-1/4	21-1/2	35-3/8	23-5/8	27-3/8	20	34-5/8	12-5/8	29	23-3/4	26-1/2	47	26	1/2	30-1/2
300	30	1-11/16	36-1/4	16-1/2	32-1/4	23-3/8	16-1/2	29-1/2	24-5/8	20-1/2	28-1/8	23-5/8	39-3/8	26-3/8	30-1/2	22-1/2	36	13-3/4	32-1/4	26	28-3/4	51-7/8	27	1/2	33-3/4
330	33	1-11/16	39-1/2	21-3/8	35-3/8	25-7/8	21-5/8	33-1/8	27-1/8	22-1/2	30-7/8	25-5/8	43	28-7/8	33-1/2	24-3/8	41-3/8	15	35-3/8	28-3/8	31-1/8	58-1/2	30-3/8	7/8	38-3/8
365	36-1/2	1-15/16	43-1/8	21-3/8	39-1/4	28-1/2	21-5/8	36-7/8	30	24-7/8	34-1/8	28	47-3/8	32	37-1/8	27	43-1/4	16-1/4	39	31	33-3/4	63-3/4	30-3/8	7/8	42-1/8

FAN DISTRIBUTORS 617-868-1310

Acid and Chemical Resistant

Direct and Belt Drive Blowers

Available In PVC & Polypropylene

No Metal In The Air Stream

Corrosion Resistant

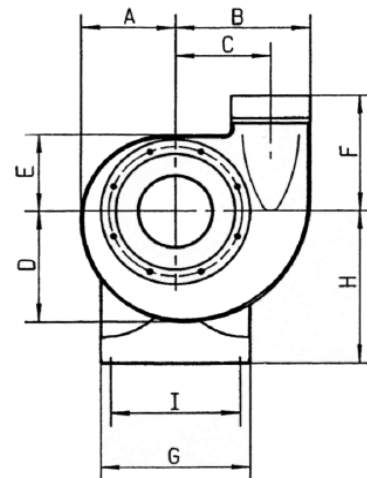
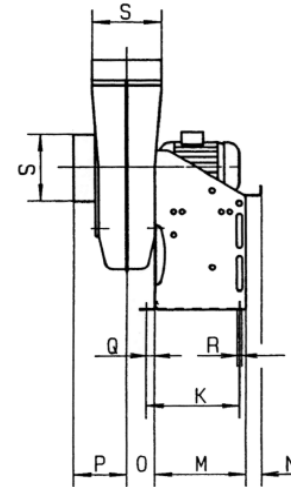
Fire Retardant (Polypropylene)

Field Proven Longevity Against Acids & Chemicals



IMPELLER

Polypropylene molded blades, mechanically welded. Each Impeller is dynamically balanced.



Perfect fit and performance applications

Wherever moist, acidic, or alkaline gasses and fumes must be moved and exhausted, a plastic fan is needed to resist corrosion and premature failure. The following industries are especially vulnerable to the rapid deterioration of fans and blowers. And unlike fiberglass, plastic components do not shed fibers and wick moisture with age and are generally less expensive.

Air-pollution control	Laboratories	Refuse incineration
Chemical processing	Metal finishing	Textile finishing
Compost plants	Paper manufacturer	Hospitals
Electronics manufacturing	Photographic processing	University labs
Electroplating	Precious-metal recovery	Waste-water treatment
Food and beverage	Process engineering	Water-treatment plants

Precision balancing and testing for proper operation

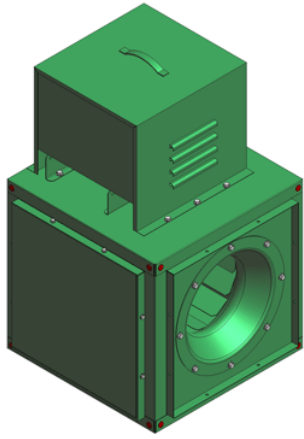
CMV	A	B	C	D	E	F	G	H	I	K	L	M	O	P	Q	R	S
125	6.75	9.5	6.5	8	6	9	10.75	11	9	8.25	18	8	2.13	4.38	.75	.31	5
140	7.5	10.5	7.13	8.75	6.5	9.63	11.5	11.88	10	8.5	18.25	8.25	2.25	4.63	.75	.31	5.5
160	8.38	11.75	8.13	10	7	10.25	12.75	13.13	11	8.88	18.63	8.25	2.25	4.88	.75	.38	6.25
180	9.25	13.25	9	11	7.88	11.25	14	14.75	12.5	8.88	19.75	8.625	2.875	5.5	.75	.38	7
200	10.75	14.5	10	12.25	8.63	12.38	15.63	15.75	13.75	10.5	21.75	10.25	3.25	6.25	.75	.38	7.88
225	11.38	16.25	11.25	13.63	9.5	13.38	17.63	17.75	15.38	11.5	25.13	10.75	3.63	7.13	1.25	.5	8.88
250	12.5	17.88	12.5	15	10.5	14.5	19.5	19.63	17.13	11.5	29	10.75	4.13	7.88	1.25	.5	9.88
280	13.75	19.75	13.63	16.5	11.5	16	21.5	22	19	11.63	26	11.25	4.5	8.88	1.25	.5	11
315	15.5	22.25	15.63	18.63	13	17.75	24.13	24.88	21.5	13.25	26.5	12.75	5.25	9.88	1.25	.5	12.5
400	17.5	25.75	17.38	21.25	14.5	18.5	27	28	24.38	14.5	31.38	14.25	6.38	12.38	1.25	.5	15.75

FAN DISTRIBUTORS 617-868-1310

PERFORMANCE DATA & PRICING

Available in Belt and Direct Drive

MODEL NO.	HP	FPM	*CFM	STATIC PRESSURE - RPM/BHP								Belt Drive					
				.25	.50	.75	1.0	1.5	2.0	2.5	3	TEFC 1Φ	TEFC 3Φ	Explosion Proof 1Φ	Explosion Proof 3Φ		
CMV125 B		375	50	1035/.005	1416/.011	1712/.019	1963/.027	2387/.046	2746/.068								
		755	100	1210/.010	1553/.019	1831/.028	2071/.039	2481/.062	2832/.089	3142/.117	3424/.148						
		1130	150	1448/.020	1748/.031	2002/.043	2226/.056	2616/.084	2953/.114	3254/.147	3530/.183	\$4090.	\$4020.	\$4340.	\$4380.		
	C	1/3	1510	200	1724/.037	1985/.051	2214/.068	2421/.081	2786/.113	3107/.148	3397/.186	4110.	4100.	4490.	4510.		
		1890	250	2252/.081	2457/.098	2646/.116	2986/.153	3290/.193	3566/.234								
		2270	300	2539/.121	2724/.142	2896/.163	3211/.205	3497/.250									
	2645	350	2841/.176	3008/.199	3165/.223	3457/.272											
CMV160 B		460	100	1564/.040	1893/.065	2171/.093	2417/.123	2640/.156	2845/.191	3030/.227	3216/.266						
		920	200	1709/.072	2019/.108	2286/.146	2524/.186	2741/.228	2942/.273	3129/.319	3306/.367						
		1385	300	1911/.122	2197/.169	2448/.218	2674/.269	2882/.323	3076/.378	3258/.434	3429/.492	4300.	4260.	4580.	4620.		
	D	1/2	1845	400	2157/.196	2417/.255	2649/.316	2862/.379	3059/.444	3244/.510	3418/.577	4380.	4350.	4810.	4780.		
		3/4	2310	500	2434/.302	2669/.374	2883/.447	3081/.522	3267/.598	3442/.676		4450.	4380.	4960.	4900.		
	F	1	2770	600	2734/.448	2946/.532	3142/.617	3327/.705	3500/.793			4650.	4460.	5080.	5040.		
	3235	700	3050/.642	3242/.738	3422/.836	3593/.936											
CMV180 B		730	200	1108/.037	1466/.072	1751/.111	1994/.153	2210/.199	2406/.247	2756/.350	3066/.462						
		1095	300	1263/.065	1591/.112	1860/.162	2093/.215	2302/.271	2492/.329	2835/.453	3139/.584	4470.	4430.	4740.	4780.		
		1460	400	1449/.109	1745/.168	1996/.230	2217/.294	2417/.361	2601/.430	2933/.575	3230/.728	4490.	4510.	4900.	4910.		
		1825	500	1656/.173	1922/.244	2154/.318	2362/.395	2552/.473	2729/.554	3050/.722	3338/.896	4550.	4520.	4970.	4940.		
	E	3/4	2190	600	1877/.262	2117/.346	2331/.432	2526/.521	2706/.612	2874/.704	3182/.895	4610.	4550.	5120.	5080.		
	F	1	2555	700	2109/.382	2326/.478	2524/.577	2705/.678	2875/.781	3035/.886	3330/1.10	4820.	4630.	5250.	5210.		
	1.5	2920	800	2545/.645	2728/.757	2898/.871	3057/.986	3209/1.10	3491/1.34		4830.	4650.	6440.	5220.			
	2	3285	900	2773/.854	2941/.977	3100/1.10	3251/1.23	3394/1.36			5110.	4670.	6450.	5350.			
	3650	1000	3006/1.10	3163/1.24	3312/1.38	3453/1.52	3589/1.66										
CMV200 D		2365	900	1470/.288	1822/.465	2124/.653	2393/.848	2637/1.05	2863/1.25	3073/1.46	3272/1.68						
		2660	1000	1561/.359	1892/.554	2181/.760	2440/.973	2678/1.19	2898/1.42	3104/1.65	3298/1.88	4880.	4850.	5300.	5270.		
		2995	1100	1657/.445	1970/.657	2245/.880	2495/1.11	2725/1.35	2940/1.59	3141/1.84	3331/1.09	4940.	4880.	5450.	5400.		
		3250	1200	1758/.545	2053/.774	2316/1.01	2557/1.26	2780/1.52	2988/1.78	3184/2.05	3371/2.35	5150.	4960.	5580.	5540.		
		3545	1300	2141/.908	2393/1.16	2624/1.43	2840/1.70	3042/1.99	3233/2.27	3415/2.56		5140.	4980.	6770.	5550.		
		3845	1400	2233/1.06	2474/1.33	2697/1.62	2905/1.91	3102/2.21	3288/2.51	3466/2.82		5150.	5000.	6780.	5680.		
	4140	1500	2330/1.23	2560/1.52	2774/1.82	2976/2.13	3166/2.45	3348/2.77	3521/3.10		5110.	5110.	6790.	5790.			
	4540	1600	2429/1.42	2650/1.73	2856/2.05	3051/2.38	3235/2.71	3412/3.05	3581/3.40		5250.		6100.				
	4540	1700	2532/1.64	2743/1.96	2941/2.30	3130/2.64	3309/3.00	3480/3.35									
	3030	1600	1453/.904	1688/1.24	1863/1.60	2043/1.97	2212/2.35	2370/2.75	2520/3.15	2663/3.57	6110.	5950.	7750.	6520.			
	3405	1800	1581/1.19	1778/1.56	1960/1.95	2130/2.35	2289/2.77	2440/3.20	2584/3.63	2721/4.09	6410.	5980.	7760.	6650.			
	3785	2000	1712/1.53	1895/1.50	2065/2.37	2224/2.81	2376/3.26	2519/3.72	2657/4.20	2789/4.68		6170		6850.			
	4165	2200	1847/1.95	2016/2.40	2175/2.86	2326/3.33	2469/3.82	2606/4.31	2738/4.82		6330.		7220.				
	4540	2400	1984/2.44	2142/2.93	2291/3.42	2433/3.93	2570/4.60	2700/4.98	2826/5.53		6670.		7720.				
CMV250 G		3620	2400	1565/2.04	1725/2.53	1875/3.05	2016/3.58	2150/4.13	2278/4.69	2401/5.26							
		3920	2600	1641/2.40	1793/2.93	1936/3.50	2072/4.05	2201/4.63	2325/5.23	2443/5.83							
		4225	2800	1720/2.86	1865/3.39	2001/4.00	2131/4.57	2256/5.19	2375/5.81	2490/6.50		6800.		7490.			
		4525	3000	1802/3.30	1939/3.90	2070/4.52	2195/5.15	2314/5.79	2430/6.45	2541/7.12		6970.		7860.			
		4825	3200	1885/3.84	2016/4.47	2141/5.11	2261/5.78	2377/6.50	2488/7.15		7430.		8350.				
		5170	3500	1561/3.59	1690/4.29	1812/5.02	1928/5.76	2039/6.53	2146/7.30	2249/8.10		7550.		8440.			
	4470	3750	1636/4.20	1758/4.94	1875/5.70	1986/6.50	2093/7.30	2196/8.12	2296/8.96		7880.		8930.				
	4770	4000	1712/4.88	1829/5.66	1940/6.47	2047/7.30	2150/8.14	2250/9.01			8340.		9270.				
	5065	4250	1790/5.64	1901/6.47	2008/7.31	2111/8.19	2210/9.07										
CMV280 J		3325	4500	1114/2.60	1285/3.65	1438/4.75	1578/5.88	1709/7.05	1831/8.24	1946/9.44							
		3695	5000	1199/3.32	1358/4.50	1503/5.65	1636/6.88	1761/8.15	1879/9.45	1990/10.7							
		4065	5500	1286/4.16	1435/5.39	1572/6.68	1699/8.01	1819/9.39	1932/10.7	2040/12.2							
		4435	6000	1376/5.17	1515/6.47	1645/7.86	1766/9.30	1881/10.7	1989/12.3								
		4805	6500	1598/7.73	1721/9.20	1836/10.7	1946/12.3										
		5175	7000	1683/9.16	1799/10.7	1910/12.3	2015/14.0										
	5545	7500	1770/10.8	1881/12.4	1986/14.1												
CMV315 K		3325	4500	1114/2.60	1285/3.65	1438/4.75	1578/5.88	1709/7.05	1831/8.24	1946/9.44							
		3695	5000	1199/3.32	1358/4.50	1503/5.65	1636/6.88	1761/8.15	1879/9.45	1990/10.7							
		4065	5500	1286/4.16	1435/5.39	1572/6.68	1699/8.01	1819/9.39	1932/10.7	2040/12.2							
		4435	6000	1376/5.17	1515/6.47	1645/7.86	1766/9.30	1881/10.7	1989/12.3								
		4805	6500	1598/7.73	1721/9.20	1836/10.7	1946/12.3										
		5175	7000	1683/9.16	1799/10.7	1910/12.3	2015/14.0										
	5545	7500	1770/10.8	1881/12.4	1986/14.1												
CMV400 L		3325	4500	1114/2.60	1285/3.65	1438/4.75	1578/5.88	1709/7.05	1831/8.24	1946/9.44							
		3695	5000	1199/3.32	1358/4.50	1503/5.65	1636/6.88	1761/8.15	1879/9.45	1990/10.7							
		4065	5500	1286/4.16	1435/5.39	1572/6.68	1699/8.01	1819/9.39	1932/10.7	2040/12.2							
		4435	6000	1376/5.17	1515/6.47	1645/7.86	1766/9.30	1881/10.7	1989/12.3								
		4805	6500	1598/7.73	1721/9.20	1836/10.7</											



DELHI INDUSTRIES DSQ-B SERIES

Belt Drive

Backward Inclined Non-Overloading Inline Blowers.

Gasketed Leak Proof Access Panels.

Angle Iron Mounting Lugs can be relocated for Base or Suspension mounting.

Motor Cover is supplied.



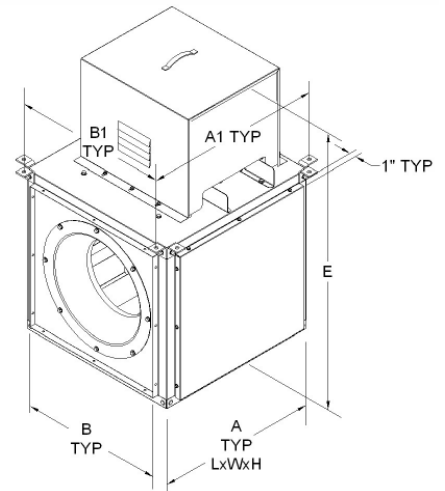
See page 16 for special motor additions.

MODEL DSQ-B	HP	FPM	CFM	RPM/BHP								Single Speed		Two Speed	
				.25	.5	.75	1	1.5	2	2.5	1 Phase	3 Phase	1 Phase	3 Phase	
10	B	1/4	587	800	1438/.14	1632/.20	1809/.28	1970/.36	2246/.54	2492/.73	2754/.94	\$1650.	\$1650.	\$1700.	-
	C	1/3	661	900	1571/.18	1746/.25	1912/.33	2065/.42	2340/.61	2572/.81		1660.	1700.	1730.	-
	D	1/2	734	1000	1708/.23	1866/.30	2021/.39	2166/.48	2432/.68	2666/.90		1710.	1710.	1750.	-
	E	3/4	808	1100	1846/.28	1993/.37	2136/.46	2273/.55	2527/.77			1780.	1720.	2060.	-
	F	1	881	1200	1986/.35	2125/.44	2256/.54	2385/.64	2628/.86			1880.	1730.	2370.	\$2220.
13			573	1400	1043/.18	1191/.28	1327/.38	1456/.50	1703/.76	1934/1.06	2148/1.39				
			655	1600	1150/.24	1284/.35	1408/.46	1526/.59	1751/.86	1964/1.16	2166/1.50				
	C	1/3	737	1800	1259/.31	1383/.43	1497/.55	1606/.68	1812/.97	2009/1.29		1740.	1830.	1860.	-
	D	1/2	819	2000	1371/.40	1486/.53	1593/.66	1693/.80	1884/1.10	2066/1.44		1810.	1840.	1880.	-
	E	3/4	901	2200	1485/.50	1592/.64	1692/.79	1786/.94	1965/1.25			1870.	1850.	2190.	-
	F	1	983	2400	1600/.62	1701/.77	1794/.93	1884/1.09	2052/1.42			2010.	1860.	2500.	2350.
	G	1.5	1064	2600	1717/.76	1811/.93	1900/1.10	1984/1.27				2020.	1870.	-	2420.
H	2	1146	2800	1834/.93	1923/1.10	2007/1.28	2087/1.47				2160.	1880.	-	2560.	
			1228	3000	1953/1.11	2037/1.30	2116/1.49								
16			884	3250	1165/.61	1253/.79	1335/.99	1414/1.19	1563/1.61	1703/2.06	1841/2.56				
	D	1/2	952	3500	1240/.73	1324/.93	1402/1.13	1477/1.35	1618/1.79	1752/2.26	1881/2.76	1980.	1940.	2050.	-
	E	3/4	1020	3750	1317/.86	1396/1.07	1470/1.30	1541/1.52	1676/1.98	1804/2.47		2040.	1990.	2360.	-
	F	1	1088	4000	1394/1.02	1469/1.24	1540/1.47	1608/1.71	1737/2.20	1859/2.71		2170.	2000.	2670.	2510.
	G	1.5	1156	4250	1472/1.19	1543/1.43	1611/1.67	1676/1.92	1799/2.44			2140.	2010.	-	2590.
	H	2	1224	4500	1550/1.38	1618/1.63	1683/1.89	1745/2.15	1864/2.70			2320.	2050.	-	2720.
	J	3	1293	4750	1628/1.59	1694/1.86	1756/2.13	1816/2.40				-	2210.	-	2800.
			1361	5000	1707/1.83	1770/2.11	1830/2.39	1887/2.68							
			1429	5250	1786/2.09	1846/2.38									

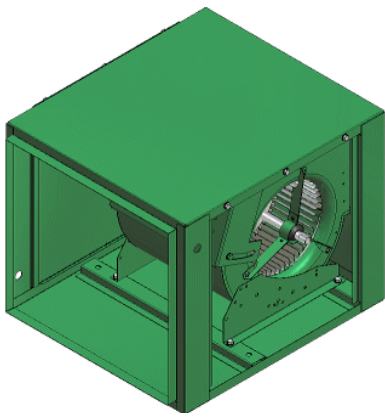
(4) Vibration Hangers - \$112.

Model	L* x W x H	Inlet/ Outlet	Mounting Bracket Holes		Motor Enclosure DSQ-B Only	
			A-1	B-1	D	E
DSQ-B-10* Length	16-1/16 20-1/16*	14	18-9/16 20-9/13*	15 19*	15-1/4	14-1/4
DSQ-B-13	22-1/16	18-3/4	24-9/16	20-3/4	15-1/4	14-1/4
DSQ-B-16	26-1/16	23	28-9/16	24-3/4	16-3/4	16-3/4

*DSQ-B-10 has extended length, sizes 13 & 16 are cubed.



DELHI DUCT BLOWERS



Forward curved blowers operate at low RPM for low noise levels.

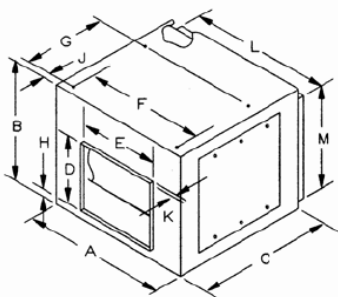
Used for exhaust or supply air applications.

Can be installed in any position.

Optional filter section.

MODEL NO.	HP	CFM	1/8" SP		1/4" SP		1/2" SP		3/4" SP		1" SP		1.5" SP		2" SP		2.5" SP		*PRICE		FILTER KIT	VIB. HANG.	
			RPM	BHP	RPM	BHP	RPM	BHP	RPM	BHP	RPM	BHP	RPM	BHP	RPM	BHP	RPM	BHP	1Φ	3Φ			
207	A	1/4	250	513 .01	719 .02	1018 .05	1237 .08	1416 .11	1708 .19	1949 .26	2159 .33	\$800.	\$910.										
	B	1/4	500	638 .04	769 .05	1026 .09	1243 .13	1438 .18	1767 .28	2037 .39	2268 .52	800.	910.										
	C	1/3	750	849 .10	937 .12	1107 .17	1290 .22	1460 .27	1781 .40	2032 .54	2277 .69	830.	960.	\$220.	\$112.								
	D	1/2	1000	1073 .22	1149 .25	1277 .30	1399 .35	1539 .43	1807 .57				940.	970.									
	E	3/4	1250	1304 .39	1369 .44	1484 .51	1584 .57	1681 .64					1010.	980.									
209	B	1/4	1250	633 .17	695 .19	840 .25	985 .32	1118 .40	1364 .57			840.	940.										
	C	1/3	1500	739 .28	788 .31	899 .37	1023 .45	1145 .53	1367 .71			960.	990.	240.	112.								
	D	1/2	1750	847 .43	888 .47	977 .54	1078 .62	1185 .71				970.	1000.										
	E	3/4	2000	957 .64	993 .67							1030.	1010.										
	B	1/4	1500	553 .18	616 .21	760 .29	893 .37	1013 .47	1230 .69	1415 .94			890.	1010.									
210	C	1/3	1750	627 .27	679 .31	795 .38	922 .48	1033 .59	1235 .81			930.	1060.										
	D	1/2	2000	702 .39	747 .44	843 .51	951 .61	1062 .73	1253 .97			1040.	1070.	280.	112.								
	E	3/4	2250	780 .55	819 .60	902 .69	992 .78	1091 .90				1100.	1080.										
	F	1	2500	859 .74	894 .80	967 .90	1044 .99					1240.	1090.										
	C	1/3	1750	445 .15	528 .20	628 .29	793 .40		1105 .77	1275 1.05	1421 1.34	1070.	1200.										
212	D	1/2	2250	533 .29	594 .34	719 .46	826 .58	915 .60	1111 .99	1276 1.31	1426 1.50	1180.	1210.										
	E	3/4	2500	581 .39	634 .44	749 .57	851 .71	930 .71	1123 1.14	1279 1.46		1250.	1220.	320.	112.								
	F	1	2750	630 .50	676 .56	781 .70	880 .85	947 .84	1138 1.31			1380.	1230.										
	G	1.5	3000	680 .64	720 .70	814 .85	911 1.01	968 .99	1155 1.50			1340.	1240.										
			3250	730 .81	767 .87	851 1.02	940 1.19	995 1.17															
			3500	781 1.00	815 1.06	890 1.21	974 1.4	1025 1.37															
			3250	399 .43	432 .48	534 .66	645 .96	727 1.23	883 1.64	1015 2.05			1620.	1570.									
215	E	3/4	3750	453 .65	478 .70	554 .86	651 1.12	745 1.48	886 2.08	1020 2.52		1750.	1580.	380.	112.								
	F	1	4250	508 .94	528 .98	585 1.13	663 1.36	751 1.70	900 2.47			1720.	1590.										
	G	1.5	4750	564 1.30	581 1.35	625 1.48	687 1.70	760 1.98	916 2.83			1910.	1630.										
	H	2	5250	620 1.74	635 1.79	670 1.92	719 2.12	780 2.39				1790.											
	J	3	5750	676 2.28	690 2.33	720 2.46	759 2.64	809 2.90															
218	F	1	4000	302 .40	350 .50	446 .73	536 1.00	617 1.29	754 1.93	867 2.59	966 3.29	2910.	2720.										
	G	1.5	4500	328 .54	371 .64	457 .91	541 1.18	619 1.49	755 2.17	870 2.89	970 3.64	2920.	2740.										
	H	2	5000	355 .71	394 .82	472 1.11	549 1.40	622 1.72	756 2.43	871 3.21	973 4.02	3060.	2780.	550.	144.								
	J	3	6000	412 1.17	445 1.30	509 1.60	574 1.95	638 2.30	761 3.06	874 3.92	975 4.83	2940.											
	K	5	6500	442 1.47	471 1.60	531 1.91	591 2.28	651 2.67	766 3.44	876 4.33		3060.											
			7000	471 1.81	499 1.96	554 2.27	610 2.65	666 3.07	775 3.89	879 4.78													
			7500	501 2.21	527 2.36	578 2.69	630 3.08	682 3.51	786 4.39														
			8000	531 2.66	555 2.82	604 3.16	652 3.55	701 4.00	798 4.94														

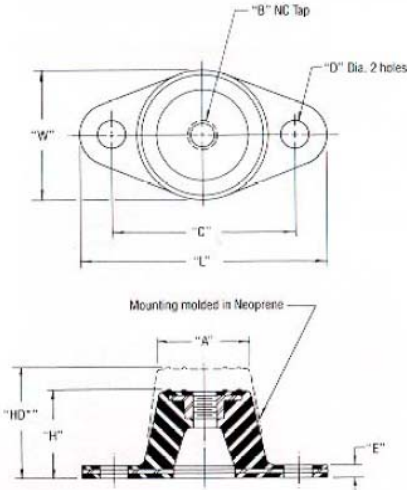
*See page 16 for two speed motors additions.



MODEL	A	B	C	D	E	F	G	H	J	K	L	M
207	18	15 ³ / ₈	23	18 ¹ / ₄	9 ³ / ₁₆	14 ¹ / ₂	9 ⁵ / ₈	1 ¹ / ₄	1 ¹ / ₄	7 ⁷ / ₈	15 ⁵ / ₈	13 ³ / ₈
209	21	18	23	10 ¹ / ₄	11 ¹³ / ₁₆	17 ¹ / ₂	11 ¹ / ₄	1 ¹ / ₄	1 ³ / ₄	7 ⁷ / ₈	19	16
210	22 ¹ / ₄	20	24 ³ / ₄	11 ³ / ₈	13 ³ / ₈	18 ³ / ₄	13 ³ / ₈	1 ¹ / ₄	1 ³ / ₄	7 ⁷ / ₈	20 ¹ / ₄	18
212	27	23	27 ¹ / ₂	13 ⁷ / ₁₆	15 ⁵ / ₈	23 ¹ / ₂	16 ⁵ / ₈	1 ¹ / ₄	1 ¹ / ₄	7 ⁷ / ₈	25	21
215	33 ¹ / ₂	28	32	32	18 ⁵ / ₈	28	19 ¹ / ₂	2 ⁵ / ₈	1 ³ / ₄	7 ⁷ / ₈	30 ¹ / ₂	25
218	41 ¹ / ₂	34	44	19 ⁵ / ₈	22 ⁵ / ₈	35	24	2 ³ / ₄	1 ³ / ₄	1 ¹ / ₈	35 ⁵ / ₈	31 ⁵ / ₈

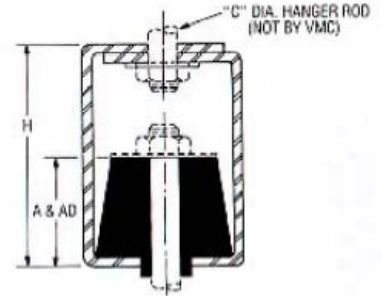
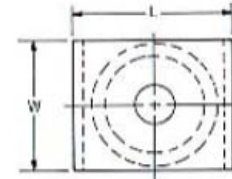
FAN DISTRIBUTORS 617-868-1310

VIBRATION ISOLATORS



TYPE R PAD

No.	Price	Color (weight designation)
R-1	\$24.	Black - Red - Green
R-2	28.	“ “ “
R-3	44.	“ “ “
RH-1	28.	Black - Red
RH-2	36.	Black - Red - Gray



Number	Max. Load	Deflect. Inches	Dimensions							
			A	B	C	D	E	H	L	W
R-1 Blk.	45	.20"	1¼	5/16	2¾	11/32	3/16	1	3⅞	1¼
R-1 Red	70									
R-1 Grn.	100									
R-2 Blk.	170	.25"	1¼	3/8	3	11/32	7/32	1¼	3⅞	2¾
R-2 Red	240									
R-2 Grn.	380									
R-3 Blk.	250	.25"	2½	½	4⅞	9/16	¼	1¼	5½	3¾
R-3 Red	525									
R-3 Gray	750									



TYPE RH HANGER

Number	Max. Load	Deflect. Inches	Dimensions							
			A	B	C	D	H	L	W	
RH-1 Blk.	45	.20"	1⅞	3/4	3/8	13/32	3	2¼	2	
RH-1 Red	75									
RH-2 Blk.	170	.25"	1¾	1-3/16	5/8	11/16	4½	3	2¼	
RH-2 Red	240									
RH-2 Gray	550									

BALDOR • RELIANCE Inverter/Vector Motor Controls

V/Hz or Sensorless Vector Control Modes

Integral Drive Mounted Operator Interface Module

4-Character LED Display Lines

8 Programmable Preset Speeds

Keypad Speed Control

0-400 Hz Frequency Control Range

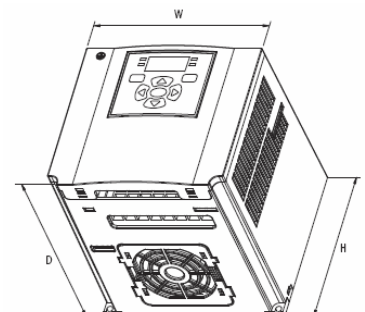
An economical way to control speeds on 3 phase fans & blowers without adding the cost of a two speed motor.



HP	230v, 50/60 Hz 3-Phase		Price	NEMA 1/IP30 Enclosure 230v & 460v	460v, 50/60 Hz, 3-Phase		Frame	Price
	Model	Output Amps.			Model	Output Amps.		
1/2	VS1MD20P5	2.5	\$650.	\$72.	VS1MD40P5	1.25	A	\$770.
1	VS1MD21	5.0	670.	72.	VS1MD41	2.5	A	800.
2	VS1MD22	8.0	840.	72.	VS1MD42	4.0	B	970.
3	VS1MD23	12.0	960.	84.	VS1MD43	6.0	C	1130.
5	VS1MD25	16.0	1230.	84.	VS1MD45	8.0	C	1390.
7.5	VS1MD27	24.0	1780.	102.	VS1MD47	12.0	D	1790.
10	VS1MD210	32.0	2110.	102.	VS1MD410	16.0	D	2130.
15	VS1MD215	46.0	2630.	114.	VS1MD415	24.0	E	2650.
20	VS1MD220	60.0	3270.	114.	VS1MD420	30.0	E	3300.

• The VS1MD AC drive has an enclosure rating of IP20, but includes provisions to mount a NEMA 1 Kit. Kit provides a metal conduit plate for attaching user conduit, as well as a plastic top cover for the drive.

Dimensions - inches (mm)			
Frame	H	W	D
VS1MD Micro Drive			
A	5.04 (128)	2.75 (70)	5.12 (130)
B	5.04 (128)	3.94 (100)	5.12 (130)
C	5.04 (128)	5.20 (140)	6.10 (155)
D	8.66 (180)	7.08 (180)	6.69 (170)
E	15.40 (320)	11.30 (235)	9.12 (189.5)
F	19.73 (410)	12.50 (260)	10.03 (208.5)



FAN DISTRIBUTORS 617-868-1310

DELHI Roof Mounted Air Supply



Filtered side intake provides a means to meet supply & exhaust air in restaurant applications.

Easy on site addition of customer supplied duct extension provides additional separation where necessary.

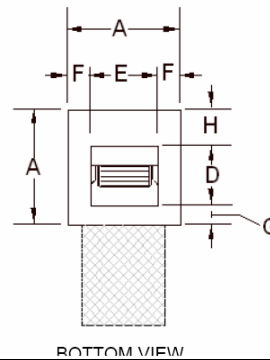
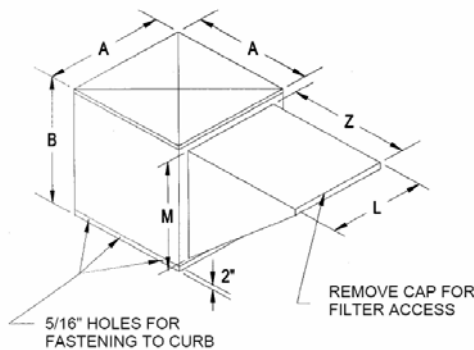
Heavy duty ball bearing suitable for -65° to 250° f.

For use in all buildings with negative pressure problems.

Limits the loss of air conditioning and heat due to kitchen hood exhaust.

MODEL NO.	HP	CFM	1/4" SP		1/2" SP		3/4" SP		1" SP		1.5" SP		2" SP		2.5" SP		PRICE 1Φ 3Φ	12" CURB	*MOT. DAMPER
			RPM	BHP	RPM	BHP	RPM	BHP	RPM	BHP	RPM	BHP	RPM	BHP	RPM	BHP			
SIS10	C	1/3	500	501 .04	710 .08	858 .13	980 .18	1182 .29	1350 .42	1498 .56	\$1550.	\$1680.	\$240.	#S216M	#S216M				
	D	1/2	1000	559 .12	723 .19	862 .26	1003 .34	1225 .50	1413 .67	1577 .85	1670.	1690.							
	E	3/4	1500	675 .26	808 .39	927 .49	1035 .59	1238 .79	1421 1.02	1592 1.25	1730.	1700.							
	F	1	2000	810 .58	923 .71	1023 .85	1119 .99	1292 1.25			1860.	1710.							
G	1.5	2500	955 1.04	1055 1.20	1143 1.37					1960.	1720.								
SIS12	D	1/2	1500	484 .18	628 .28	766 .39	880 .51	1070 .77	1231 1.05	1372 1.37	1910.	1870.	260.	#S218M					
	E	3/4	2000	551 .34	670 .45	779 .58	886 .72	1082 1.04	1242 1.36	1383 1.70	1970.	1920.							
	F	1	2500	631 .58	734 .72	827 .87	915 1.02	1086 1.36	1252 1.75		2110.	1930.							
	G	1.5	3000	720 .92	805 1.10	891 1.27	968 1.45	1115 1.81			2210.	1940.							
H	2	3500	810 1.38	887 1.59	960 1.80	1034 2.00				2260.	1980.								
SIS15G	E	3/4	3000	444 .54	550 .73	643 .94	726 1.14	879 1.59	1015 2.14	1137 2.73	2170.	2120.	300.	#S220M					
	F	1	3500	487 .78	576 .99	667 1.23	744 1.47	883 1.95	1018 2.47		2300.	2130.							
	H	1.5	4000	534 1.09	610 1.32	689 1.58	768 1.87	898 2.40	1019 2.96		2400.	2140.							
	J	2	4500	584 1.50	649 1.74	719 2.01	790 2.31	922 2.95			2460.	2180.							
K	3	5000	637 2.00	693 2.25	754 2.54	817 2.85				2330.	2330.								
SIS18H	F	1	4500	402 .85	483 1.14	553 1.49	619 1.81	773 2.84	897 3.79	997 4.61	3050.	2860.	300.	#S222M					
	G	1.5	5000	429 1.11	505 1.40	571 1.77	632 2.14	757 2.98	898 4.27										
	J	2	5500	457 1.41	527 1.72	591 2.09	649 2.51	757 3.31	882 4.48										
	K	3	6000	486 1.77	551 2.10	613 2.47	668 2.91	770 3.80	871 4.72										
	L	4	6500	516 2.18	576 2.54	635 2.93	689 3.36	787 4.35											
	M	5	7000	546 2.67	602 3.05	658 3.45	711 3.89	805 4.92											
N		7500	577 3.21	630 3.63	682 4.05	733 4.5				3050.	3170.								
O		8000	609 3.84	659 4.28	707 4.72														

*Motorized dampers are 115V/230V/1PH/60HZ.



See page 16 for Two speed motors. Or page 23 for Inverters.

MODEL	A	B	D	E	F	G	H	L	M	Z	FILTER SIZE (QTY.)
SIS-10	28-3/8	21-3/8	11-3/8	13-1/8	7-5/8	8-1/2	8-1/2	20-1/2	18-9/16	25-3/4	15 x 20 x 1 (2)
SIS-12	32-3/8	24-5/8	13-7/16	15-5/8	8-1/16	9-3/8	9-3/8	25-3/8	21-9/16	30-3/4	20 x 25 x 1 (1) & 16 x 25 x 1 (1)
SIS-15	36-3/8	28-3/8	15-7/8	18-5/8	8-1/2	7-3/4	12-5/16	31-3/16	25-13/16	33-1/2	20 x 28-1/2 x 1 (2)
SIS-18	36-3/8	42-1/2	18-7/8	21-7/8	7-1/4	6	11-1/2	35-5/8	32-11/16	40-1/4	20 x 25 x 1 (2) & 16 x 25 x 1 (2)

FAN DISTRIBUTORS 617-868-1310

FloAire – Centrifugal Roof Fan

DIRECT DRIVE



Non-overloading backward inclined wheels, 3003-H14 aluminum.

All sizes Can be wall mounted.

Bird screen is standard.

Variable speed control mounted under motor dome for fine tuning.

Exterior air is drawn into the motor area for positive cooling.

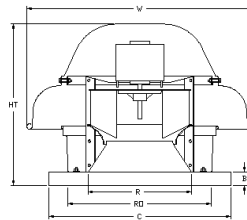
Disconnect switch is standard.

Model No.	SONES			CFM Against Static Pressure								115/1/60	12" Roof	
	HP	RPM*	@ 1/8"	0"	1/8"	1/4"	3/8"	1/2"	5/8"	3/4"	7/8"	Vari. Spd.	Curb	Damper
DR10H	0.07	1600	8.0	541	490	442	394	342	275	197	64	\$590	\$180.	\$60.
		1400	6.0	473	416	361	303	227	122					
		1200	4.4	405	339	275	188							
DR12H	0.14	1400	9.6	764	685	606	522	432	337	243	156	720.	180.	60.
		1200	7.0	655	563	468	364	252	148					
		1100	5.9	600	500	394	275	157						
		1000	4.7	546	435	314	181							
DR33H	0.33	1700	14.2	1329	1279	1230	1182	1139	1095	1049	991	930.	190.	70.
		1500	11.6	1172	1116	1060	1010	961	904	839	763			
		1300	8.7	1016	951	890	833	765	685	579				
		1200	7.5	938	868	803	739	657	555					
		1100	6.3	859	783	715	635	535						
DR75H	0.75	1175	14.9	2557	2457	2354	2243	2126	2001	1865	1712	1110.	200.	76.
		1075	12.7	2339	2230	2116	1989	1859	1709	1540	1294			
		975	10.6	2121	2000	1870	1729	1569	1384	1086				
		875	8.8	1904	1768	1617	1449	1248						
		875	8.8	1904	1768	1617	1449	1248						
		775	7.1	1686	1532	1356	1141							

*Reduced RPM on all models is attained using the supplied solid state speed control.

Dimensions (Base O.D. = C) Curb O.D.

Fan #	HT	W	B	C	D	E	R	RO
DR10H	14 1/2	20 3/4	2	19	18	12	8 1/8	12
DR12H	16 1/4	23 3/4	2	19	18	12	10 5/8	12
DR33H	19 1/8	26 1/4	2	21	20	12	12 1/8	16
DR75H	23 3/8	33 1/4	2	24 3/4	24	12	14 1/8	20



S & P Roof or Wall Mount Centrifugal



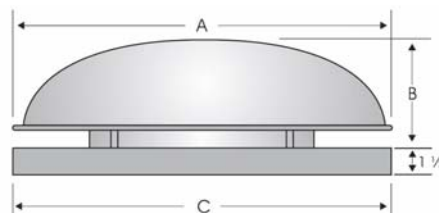
- Ultra Low Profile.
- UL 705 Electrical. – AMCA Air & Sound Licensed.
- Disconnect Switch, Aluminum Bird Screen.
- Backward Curved Centrifugal Wheel.
- Totally Enclosed Continuous Duty Motor.

Direct Drive

Model No.	Watts & RPM Amps	SONES @ 1/2"	CFM Against Static Pressure								115/1/60	12" ROOF		
			0"	1/8"	1/4"	3/8"	1/2"	5/8"	3/4"	1"	1 Speed Vari. Spd.	Damper	CURB	
LPD6	90 2800	7.2	302	268	247	222	197	175	155	118	\$496.	\$536.	\$60.	\$170.
LPD8	115 2775	11.9	387	358	331	303	275	245	222	178	\$546.	\$586.	\$60.	\$170.

Dimensions Base O.D. – Uses 16" SQ. Curb.

Model	A	B	C	RO/WO	LBS.
LPD6	16 1/2	7	16 1/2	12	12
LPD8	16 1/2	7	16 1/2	12	15



FAN DISTRIBUTORS 617-868-1310



FloAire Centrifugal Exhaust Fan

BELT DRIVE

Non Overloading Backward curve wheel.

High Efficiency with Low Tip Speeds For Quiet Operation.

Wheels Made From 3003-H14 Aluminum.

Bird Screen is Standard. Quick release Latches On Motor Dome.

Can be Wall Mounted Up To Model #BDCR24H.



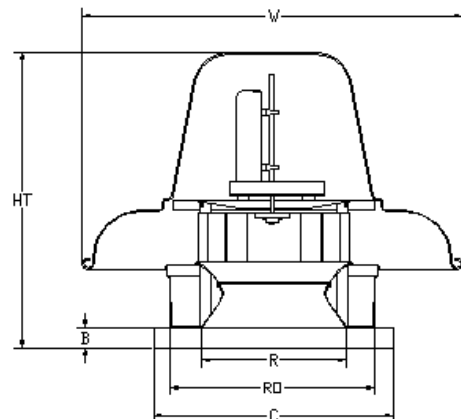
Lower CFM than listed can be attained by reducing RPM for each fan size. Please inquire.

Model No.	HP	CFM	RPM/BHP							Single Phase		Three Phase		12" Curb Damper		
			0"	1/4"	1/2"	3/4"	1"	1.25"	1.5"	1Speed	2Speed	1Speed	2Speed			
BDCR11C	B 1/4	1100	1095/0.8	1267/1.14	1425/2.21	1558/2.8					\$1100.	\$1210.	\$1210.	-		
	1/4	1300	1295/1.14	1436/2.21	1583/2.8					1100.	1210.	1210.	-	\$190.	\$66.	
	D 1/3	1500	1494/2.21	1613/2.9						1130.	1290.	1260.	-			
BDCR13C	B 1/4	1700	1049/1.15	1169/2.23	1272/3.2	1367/4.1	1462/5.0				1130.	1250.	1250.	-		
	1/3	1900	1173/2.21	1282/3.0	1377/4.0	1464/5.0				1170.	1330.	1300.	-	190.	66.	
	D 1/2	2100	1296/2.8	1396/3.8	1484/4.9					1280.	1350.	1320.	-			
	E 3/4	2300	1420/3.7	1512/4.8						1340.	1670.	1340.	-			
BDCR15D	C 1/3	2400	928/2.0	1027/3.0	1124/4.2	1218/5.5	1308/6.7	1395/8.1	1480/9.5		1240.	1400.	1370.	-		
	1/2	2800	1082/3.2	1168/4.4	1252/5.7	1334/7.1	1412/8.5	1492/10.0		1350.	1420.	1390.	-			
	E 3/4	3200	1237/4.7	1312/6.1	1386/7.5	1459/9.1				1420.	1740.	1410.	-	200.	72.	
	F 1	3600	1392/6.8	1458/8.2	1524/9.9					1550.	2040.	1500.	-			
BDCR20E	D 1/2	4000	697/3.4	764/5.1	834/6.9	904/8.9	972/11.1	1039/13.3	1105/15.7		1690.	1760.	1650.	-		
	3/4	4500	784/4.9	843/6.7	905/8.7	968/10.9	1029/13.2	1090/15.6	1149/18.1		1760.	2080.	1700.	-	240.	76.
	F 1	5500	959/8.9	1006/11.1	1056/13.5	1107/16.0	1158/18.6				1890.	2380.	1840.	2230.		
	G 1.5	6000	1046/1.15	1089/1.39	1134/1.65	1181/1.92					1900.	-	1910.	2300.		
	H 2	6500	1133/1.46	1172/1.72	1214/1.99						2040.	-	1940.	2420.		
		7000	1220/1.82													
BDCR24H	G 1.5	8000	844/1.39	855/1.72	930/2.09	976/2.48	1022/2.90	1067/3.32	1154/4.20		2110.	-	1980.	2550.		
	2	9000	949/1.98	986/2.35	1025/2.75	1065/3.18	1106/3.63	1147/4.09	1187/4.57		2300.	-	2010.	2690.		
	J 3	10000	1055/2.71	1087/3.12	1122/3.56	1158/4.02	1194/4.51				-	-	2140.	2830.	260.	102.
	K 5	11000	1160/3.61	1189/4.05	1220/4.53						-	-	2270.	3110.		
	12000	1265/4.69														
BDCR30J	H 2	10000	609/1.58	647/2.06	679/2.49	711/2.92	743/3.38	777/3.88	812/4.41		3100.	-	2810.	3490.		
	3	11000	670/2.11	705/2.64	735/3.11	764/3.58	793/4.07	823/4.59		-	-	2940.	3630.	350.	118.	
	K 5	13000	792/3.48	823/4.12	849/4.7						-	-	3070.	3880.		
		14000	853/4.34													
BDCR36J	H 2	13000	443/1.41	480/2.03	515/2.65	550/3.29	585/3.97	621/4.70	657/5.46		4190.	-	3910.	4590.		
	3	15000	511/2.17	544/2.89	574/3.59	604/4.31	634/5.06	665/5.84	696/6.66		-	-	4010.	4700.		
	K 5	17000	579/3.16	609/3.98	636/4.77	662/5.58	689/6.40	715/7.25			-	-	4130.	4980.	370.	150.
	L 7.5	19000	647/4.41	674/5.33	699/6.22	723/7.11					-	-	4410.	-		
		21000	715/5.95	740/6.97												

Dimensions

MODEL	HT	W	B	C	D	R	RO	WEIGHT
BDCR11	25 1/2	26 1/4	2	21	20	12 1/8	16	105#
BDCR13	27 1/4	29 3/8	2	21	20	13 1/4	16	105#
BDCR15	30 5/8	33 1/4	2	24 3/4	24	14 7/8	16	130#
BDCR20	32 3/4	38 1/4	2	28	27	18	20	195#
BDCR24	37 3/4	42 1/2	2	33	32	23 3/8	24	215#
BDCR30	40	52	2	40	39	24	30	380#
BDCR36	45-9/16	63-7/16	2	44	43	25 1/4	36	420#

BDCR SERIES DOWNBLAST EXHAUST FANS



FloAire Direct Drive Up-Blast

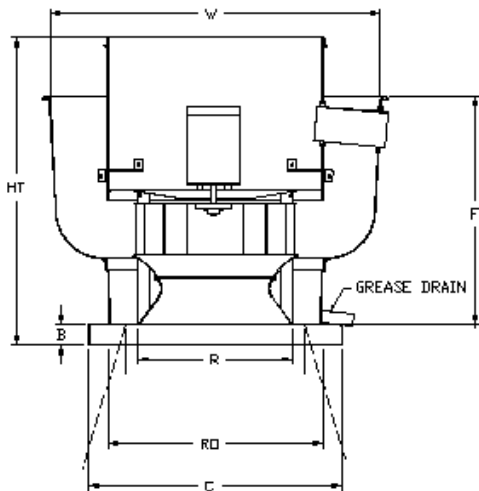


UL 762 Kitchen Hood Exhaust - *NFPA96 Compliance.
Can Be Mounted On Roof or Wall.
Heavy Duty Constuction. Quick Release Latches.
Variable Speed Control Mounted In Motor Compartment
For Fine Tuning.
External Disconnect Standard. Quick Release Latches.
Forced Fresh Air Cools Motor Compartment.
Fully Welded Leak Proof Grease Drain.

Model No.	HP	●RPM	Tip Speed	●CFM Against Static Pressure								Price 115/1/60	12" Roof Curb	
				0	1/8	1/4	3/8	1/2	5/8	3/4	1			1 1/4
DU12	.14	1200	3299	612	526	445	331	217					\$940.	\$180.
	.14	1300	3574	663	593	514	417	308	203					
	.14	1400	3848	714	650	579	495	395	297	198				
	.14	1500	4123	766	705	640	567	481	385	294				
DU33	.33	1225	3768	953	879	794	701	594	435				1140.	190.
	.33	1325	4076	1030	963	888	803	713	603	428				
	.33	1425	4384	1108	1045	979	901	821	730	622				
	.33	1525	4691	1186	1127	1067	966	922	847	757	474			
	.33	1625	4999	1264	1209	1153	1090	1020	950	876	688			
	.33	1725	5306	1342	1290	1237	1181	1116	1051	984	831	595		
DU50	.50	1170	4212	1528	1436	1343	1246	1122	979	801			1240.	190.
	.50	1270	4572	1658	1573	1489	1400	1301	1185	1047				
	.50	1370	4932	1789	1710	1632	1551	1469	1366	1259	975			
	.50	1470	5292	1919	1846	1773	1699	1622	1542	1442	1217	910		
	.50	1570	5652	2050	1981	1913	1844	1773	1701	1619	1430	1191		
	.50	1670	6012	2181	2116	2052	1987	1922	1854	1786	1615	1418		
DU85	.75	1225	5051	2552	2446	2338	2218	2094	1955	1804	1409		1510.	200.
	.75	1325	5463	2760	2662	2563	2458	2343	2228	2094	1790	1369		
	.75	1425	5876	2969	2878	2785	2693	2587	2480	2373	2114	1809		
	.75	1525	6288	3177	3092	3006	2920	2827	2727	2627	2404	2147		
	.75	1625	6700	3385	3306	3225	3144	3063	2969	2875	2685	2457		

●All Lower CFM and RPM listed are attained using the speed control mounted under motor dome.
 * When installed according to NFPA96 guidelines.

Curb Hinge Kit-----\$114.
 Grease Box (With downspout)-----92.
 Wall Mounting Plate-----110.

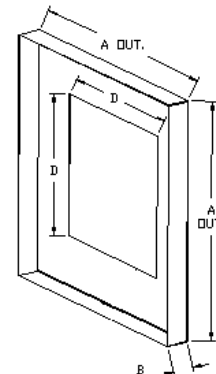


Fan Dimensions ▲ Curb O.D.

Model	HT	W	B	C	D	F	R	RO	WT.
DU12	18	22	2	19	18	14 1/2	10 5/8	13	40#
DU33	25 1/4	25 1/2	2	21	20	18 1/2	12 1/8	16	50#
DU50	27 1/4	28 3/8	2	21	20	21 1/2	13 1/4	16	55#
DU85	30 1/2	31 1/8	2	24 1/4	24	23	14 3/8	20	60#

Wall Plate Dimensions

MODEL	A	B	D
DU12	18 1/2	2	13
DU33 & 50	20 1/2	2	16
DU85	24 1/2	2	20



FAN DISTRIBUTORS 617-868-1310

FloAir Commercial Kitchen Hood exhaust

BELT DRIVE

UL762 LISTED – *NFPA96 COMPLIANCE



BDU15B – BDU24H CAN BE MOUNTED ON ROOF OR WALL.

HEAVY DUTY CONSTRUCTION. QUICK RELEASE LATCHES. VARIABLE PITCH MOTOR PULLEY. FULLY WELDED LEAK PROOF GREASE DRAIN.

FORCED FRESH AIR COOLS MOTOR COMPARTMENT.

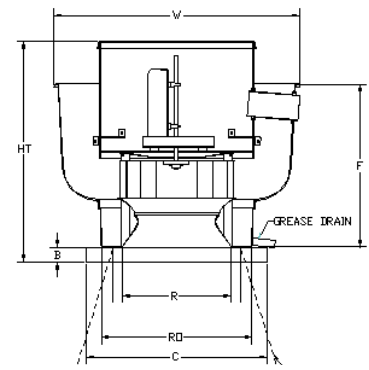
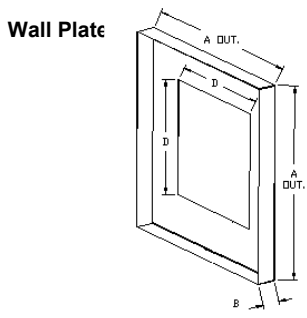
NON-OVERLOADING BACKWARD CURVE WHEELS.

MODEL No.	HP	CFM	RPM/BHP							Single Phase		Three Phase		12" Roof Curb					
			0"	1/4"	1/2"	3/4"	1"	1.25"	1.5"	1 Speed	2 Speed	1 Speed	2 Speed						
BDU15	B	1/4	2000	798/1.13	912/1.22	1021/1.32	1125/1.43	1225/1.55	1322/1.68	1415/1.81	\$1340.	\$1460.	\$1460.	-	\$200.				
	C	1/3	2400	878/1.18	981/1.27	1083/1.38	1180/1.50	1272/1.62	1362/1.75	1449/1.89						1370.	1530.	1500.	-
	D	1/2	2600	958/1.23	1053/1.33	1146/1.45	1236/1.57	1324/1.70	1408/1.84	1490/1.98						1480.	1550.	1520.	-
	E	3/4	2800	1118/1.36	1199/1.48	1280/1.61	1359/1.75	1436/1.89								1550.	1870.	1540.	-
	F	1	3000	1198/1.44	1273/1.57	1349/1.71	1424/1.85	1496/1.0								1680.	-	-	-
			3200	1277/1.54	1348/1.67	1419/1.82	1490/1.97												
BDU20	D	1/2	3700	672/1.31	735/1.46	810/1.63	884/1.82	954/1.02	1020/1.23	1085/1.44	1870.	1940.	1830.	-	240.				
	E	3/4	4200	763/1.45	817/1.61	881/1.80	947/1.01	1012/1.22	1073/1.45	1132/1.69						1930.	2250.	1890.	-
	F	1	4700	853/1.63	901/1.81	956/1.01	1015/1.23	1074/1.47	1131/1.71	1187/1.97						2060.	2560.	2010.	2400.
	G	1.5	5200	944/1.85	986/1.05	1034/1.27	1087/1.50	1141/1.75								2110.	-	2090.	2480.
	H	2	6200	1035/1.12	1073/1.34	1115/1.57	1162/1.82									2220.	-	2110.	2610.
BDU24	E	3/4	4500	530/1.43	602/1.69	668/1.97	729/1.26	785/1.57	838/1.9	887/2.24	2210.	2540.	2160.	-	260.				
	F	1	5500	648/1.79	708/1.10	764/1.43	817/1.77	868/2.13	915/2.5	961/2.88						2350.	2840.	2180.	2690.
	G	1.5	6500	768/1.30	818/1.67	866/2.05	912/2.44	957/2.85	1000/3.27	1042/3.70						2400.	-	2200.	2760.
	H	2	7500	884/2.00	930/2.42	972/2.85	1013/3.29	1053/3.75	1092/4.22	1130/4.70						2500.	-	2220.	2900.
	J	3	8500	1002/2.91	1042/3.39	1081/3.87	1117/4.37	1153/4.87								-	-	2380.	3060.
	K	5	9500	1119/4.06	1156/4.59											-	-	2500.	3350.
BDU30	F	1	6000	385/1.39	433/1.69	487/1.93	535/1.23	582/1.55	629/1.90		3360.	3750.	3070.	3600.	350.				
	G	1.5	7000	449/1.62	489/1.91	536/1.23	580/1.57	621/1.92	661/2.29	701/2.69						3220.	-	3100.	3670.
	H	2	8000	513/1.93	546/1.25	587/1.61	628/1.99	666/2.38	702/2.78	737/3.19						3410.	-	3130.	3810.
	J	3	9000	577/1.32	606/1.68	641/2.07	677/2.49	713/2.92	747/3.36	779/3.80						-	-	3260.	3940.
	K	5	10000	641/1.81	666/2.21	697/2.63	729/3.09	762/3.56	794/4.03	825/4.52						-	-	3380.	4220.
BDU36	G	1.5	12000	769/3.13	790/3.60	813/4.09	839/4.62				4470.	-	4340.	4910.	370.				
	H	2	14000	406/1.00	441/1.51	478/2.09	515/2.70	552/3.34	589/4.01	626/4.71						4660.	-	4370.	5050.
	J	3	16000	474/1.59	504/2.17	535/2.82	567/3.51	598/4.23	630/4.97	662/5.73						-	-	4470.	5160.
	K	5	18000	541/2.37	567/3.02	594/3.74	622/4.51	650/5.30	677/6.12	705/6.96						-	-	4600.	5380.
	L	7.5	20000	609/3.37	632/4.10	656/4.89	680/5.73	705/6.60	729/7.49							-	-	4880.	-

*When Installed complying with NFPA 96 guidelines. ■ Three phase two speed motors are single winding variable torque single voltage. For 3 phase multi-speed option, see inverters on page 23.

Model	HT	W	B	C	Curb O.D.				Weight	Wall Plate		
					D	F	R	RO		A	B	D
BDU15	30 1/2	33 3/4	2	24 3/4	24	23	14 7/8	16	140#	24 1/4	2	20
BDU20	33 3/8	38 7/8	2	28	27	29 1/2	18	20	195#	27 1/2	2	24
BDU24	37 1/2	43 3/8	2	33	32	30 5/8	23 3/8	24	270#	32 1/2	2	28
BDU30	40	52 3/4	2	40	39	33 1/2	24	30	410#	-	-	-
BDU36	49-9/16	63-7/16	2	44	43	43-7/16	25 1/4	36	470#	-	-	-

Curb hinge kit – BDU15 & 20---\$114.
 “ “ “ BDU24 – 36---\$148.
 Wall mounting plate-----\$110.
 Grease Box-----\$92.
 (Includes downspout)



FAN DISTRIBUTORS 617-868-1310



UP-BLAST ROOF FAN

FOR HIGH VOLUME EXHAUSTING



UP-BLAST DISCHARGE - KEEPS EXHAUSTED AIR AWAY FROM RETURN OR SUPPLY AIR SYSTEMS.

AIR BLAST - TURNS RAIN AND SNOW AWAY.

WIND BAND - PROTECTS THE DAMPERS WHILE OPEN.

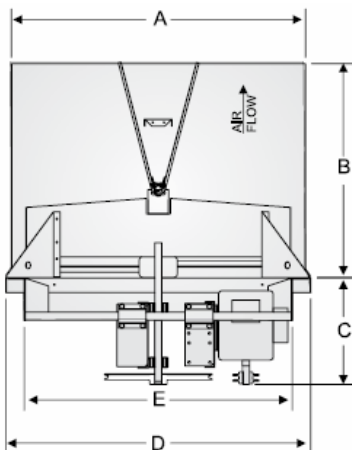
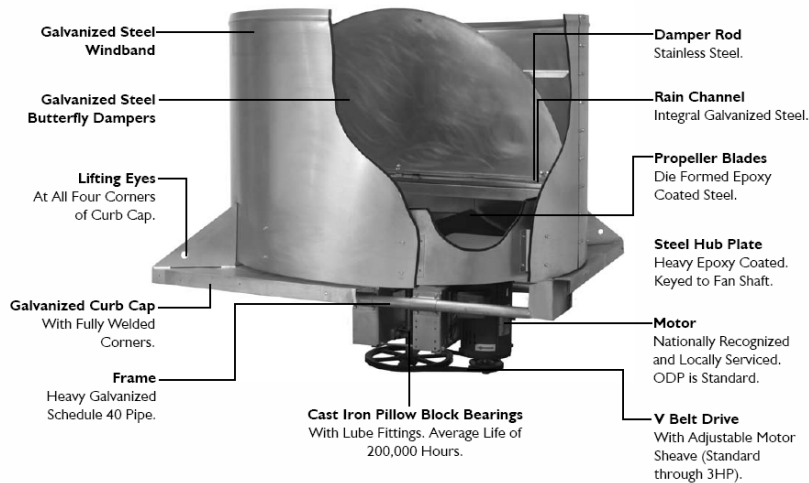
HEAVY GAUGE - GALVANIZED STEEL CONSTRUCTION.

MAGNETIC LATCHES - HOLD DAMPERS DOWN WHEN UNIT IS NOT IN USE.

Non-stock item. 2 week delivery. Size 24-36 includes freight. 42 & 48 plus freight.

Model No.	HP	RPM	Sones	CFM Against Static Pressure					Single Phase	Three Phase	12" Roof Curb	Average Ship Wt.	
				0"	1/8"	1/4"	3/8"	1/2"					
UBS24 E	3/4	1070	22	7079	6599	6023	5284	3732	\$1970.	\$2130.	\$290.	250#	
	F	1	1200	27	7939	7511	7068	6461	5718	2150.			2160.
UBS30 G	F	1	755	17.6	10546	9463	7865	5231	3906	2380.	2392.	350.	325#
	H	1.5	915	25	12781	11952	10895	9435	7270	2680.	2520.		
UBS36 G	H	2	1030	31	14388	13700	12782	11745	10346	2840.	2560.	400.	350#
	F	1	575	15.1	11872	10354	8064	5301	3522	2834.	2846.		
UBS42 J	H	1.5	705	22	14557	13389	11962	9903	6871	3050.	2880.	450.	425#
	H	2	795	26	16514	15416	14200	12722	10776	3250.	2950.		
UBS48 J	J	3	950	37	19087	18221	17299	16291	15181	-	3030.	500.	450#
	G	1.5	510	16.8	16307	14087	11400	7270	2920.	2780.			
UBS48 J	H	2	600	23	19184	17283	15281	12804	8980	3060.	2820.	-	-
	J	3	700	37	22382	20749	19150	17245	15170	-	3040.		
UBS48 J	K	5	790	48	25259	23813	22382	20885	19127	-	3280.	-	-
	H	2	475	20	22656	20052	16056	10504	7559	3480.	3240.		
UBS48 J	J	3	570	27	27187	25018	25563	19410	14113	-	3380.	-	-
	K	5	660	38	31480	29606	27732	25319	22538	-	3730.		

Available in 54" & 60".
Please call for info.



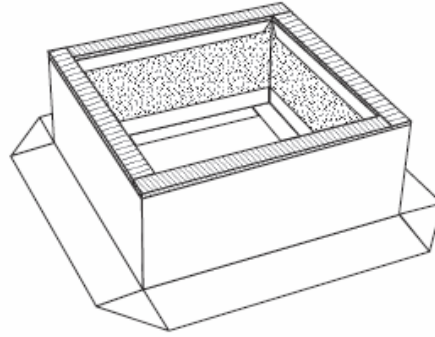
Curb O.D.

MODEL UBS	A	B	C	D	E	F	METAL GAUGES		Average Wt. Lbs.
							WIND SHROUD	FAN PANEL	
24	30	26	20	32	28	31	18	16	250
30	36	29	21	38	34	37	18	16	325
36	42	31	21	44	40	43	18	16	350
42	48	34	22	50	46	49	18	16	425
48	54	37	26	56	52	55	18	16	450

FAN DISTRIBUTORS 617-868-1310

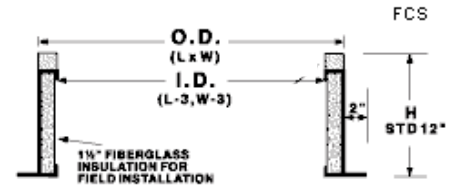
ROOF CURBS

- 18 Gauge Galvanized Steel
- 1.5 Inches of Rigid Fiberglass Insulation
- Neoprene Sealing Strip
- Continuously Welded Corners



12" High Standard Insulated Curbs Galvanized Steel.

MODEL NO.	DIMENSIONS			FOR MODELS			PRICE
	OD	ID	H	FLOAIRE	DELHI	S&P	
C160	16	13	12			LPD6 & 8	\$170.
C180	18	15	12	DR10, DR12, DU12			180.
C200	20	17	12	DR33, BDCR11, 13, DU33, 50			190.
C240	24	21	12	DR75, BDCR15, BDU15, DU85			200.
C270	27	24	12	BDCR20, BDU20	SIS10		240.
C315	31½	28½	12	BDCR24, BDU24	SIS12		260.
C350	35	32	12		SIS15 & 18		300.
C390	39	36	12	BDCR30, BDU30			350.
C430	43	40	12	BDCR36, BDU36			370.



Hinge Kit-----\$114. Grease Collector Box-----\$92.

Hinge Kit (Heavy Duty)-----\$148.00

Approximate Full Load Three Phase Motor Amperes

Horsepower	Full Load Amperes				Minimum Transformer KVA
	208 V	230 V	460 V	575 V	
1/2	2.2	2.0	1.0	0.8	0.9
3/4	3.1	2.8	1.4	1.1	1.2
1	4.0	3.6	1.8	1.4	1.5
1-1/2	5.7	5.2	2.6	2.1	2.1
2	7.5	6.8	3.4	2.7	2.7
3	10.7	9.6	4.8	3.9	3.8
5	16.7	15.2	7.6	6.1	6.3
7-1/2	24	22	11	9	9.2
10	31	28	14	11	11.2
15	46	42	21	17	16.6
20	59	54	27	22	21.6
25	75	68	34	27	26.6

Approximate Full Load Single Phase Motor Amperes

Horsepower	Full Load Amperes			Minimum Transformer KVA
	115 V	208 V	230 V	
1/6	4.4	2.4	2.2	.53
1/4	5.8	3.2	2.9	.70
1/3	7.2	4.0	3.6	.87
1/2	9.8	5.4	4.9	1.18
3/4	13.8	7.6	6.9	1.66
1	16	8.8	8	1.92
1-1/2	20	11	10	2.40
2	24	13.2	12	2.88
3	34	18.7	17	4.10

Wall Shutters

Felt strip on louver edges
Counter balanced louvers open wide
Steel frame construction with aluminum louvers

Inside tie rods are weather protected
Deep shroud for wind protection
304 Stainless pivot pins, rivets and bushings



Model No.	Louver Size	Outside Frame	Price	
			Gravity	Motorized
S08	8 x 8	11¼ x 11¼	\$54.	—
S10	10 x 10	13¼ x 13¼	62.	\$216.
S12	12 x 12	15¼ x 15¼	66.	228.
S16	16 x 16	19¼ x 19¼	82.	242.
S18	18 x 18	21¼ x 21¼	92.	250.
S20	20 x 20	23¼ x 23¼	96.	258.
S24	24 x 24	27¼ x 27¼	112.	274.
S30	30 x 30	33¼ x 33¼	120.	276.
S36	36 x 36	39¼ x 39¼	190.	340.
S42	42 x 42	45¼ x 45¼	228.	380.
S48	48 x 48	51¼ x 51¼	262.	420.

Roof Fan and Duct Dampers

Prevents back-drafts when used with roof fans or inside square duct.
Gravity operated, spring assisted. Closes when fan stops.
Can be used vertically when spring is removed.



Model No.	Outside Dimensions	Price	
		Gravity	Motorized
S210	9½ x 9½	\$58.	\$200.
S212	11½ x 11½	60.	204.
S214	13½ x 13½	64.	210.
S216	15½ x 15½	70.	214.
S218	17½ x 17½	74.	218.
S220	19½ x 19½	76.	220.
S222	21½ x 21½	80.	224.
S224	23½ x 23½	96.	230.
S228	27½ x 27½	108.	240.
S230	29½ x 29½	118.	250.
S232	31½ x 31½	124.	256.
S236	35½ x 35½	150.	284.



Ceiling Shutters

For use with whole-house fans.



Standard Ceiling Shutter

MODEL	FAN SIZE	OUTSIDE DIMENSION	INSIDE DIMENSION	Price
AS10	24"	26" x 26"	24" x 24"	\$156.
AS11	30"	32" x 32"	30" x 30"	180.
AS16	36"	34" x 45"	32" x 43"	242.
AS18	42"	36" x 48"	34" x 46"	274.

No Joist Cut Ceiling Shutter

MODEL	FAN SIZE	OUTSIDE DIMENSION	INSIDE DIMENSION	Price
CSS24	24"	24" x 32"	22" x 30"	\$196.
CSS30	30"	32" x 35"	30" x 33"	230.
CSS36	36"	32" x 43"	30" x 40"	240.

FAN DISTRIBUTORS 617-868-1310

Fan and Blower Motors

Open Drip Proof Split Phase One and Two Speed



HP	RPM	VOLTS	FRAME	CAT. NO.	AMPS	PRICE
1/4	1725	115	48	S102	5.7	\$196.
1/4	1725/1140	115	48	H171	4.2/2.7	322.
1/3	1725	115	48	S106	6.5	234.
1/3	1725/1140	115	48	H173	5.7/3.2	406.
1/2	1725/1140	115	56	H175	8.0/4.2	426.



Single Phase Capacitor Start One and Two Speed

1/4	1725	115/230	48	G1114	5.2/2.6	\$286.
1/3	1725	115/230	48	S110	7.0/3.5	286.
1/2	1725	115/230	56	S112	9.1/4.5	352.
3/4	1725	115/230	56	S114	10.4/5.2	418.
3/4	1725/1140	115	56	C420	9.0/6.4	764.
3/4	1725/1140	208-230	56	C486	14.3-4.4/3.1-3.2	694.
1.0	1725	115/230	56	S116	13.6/6.8	560.
1.0	1725/1140	115	56	C475	10.8/7.4	954.
1.0	1725/1140	208-230	56	C476	5.3-5.4/3.6-3.7	990.
2.0	1725	115/208-230	145T	I147	21/11.3-10.5	363.



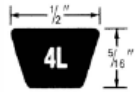
Three phase Single Speed Can be used with Inverter Vector Controls Inverter/Vector Controls, Page 23

HP	RPM	VOLTS	FRAME	CAT. NO.	AMPS	PRICE
1/4	1725	208-230/460	48	G044	1.2-1.3/.65	\$322.
1/3	1725	208-230/460	48	K527	1.5-1.6/0.8	374.
1/2	1725	208-230/460	56	K381	2.3-2.2/1.1	314.
3/4	1725	208-230/460	56	G084	2.7-2.8/1.4	362.
1.0	1750	208-230/460	143T	E715	3.3-3.1/1.55	362.
1.0	3600	208-230/460	56	K000	3.7-3.7/1.85	434.
1.5	1750	208-230/460	145T	E716	4.6-4.4/2.2	390.
2.0	1750	208-230/460	145T	E717	6.2-5.8/2.9	426.
2.0	3600	230/460	145T	E1012	5.4/2.7	576.
3.0	1750	208-230/460	182T	E718	8.8-8.2/4.1	498.
5.0	1750	208-230/460	184T	E719	14.4-13.0/6.5	568.
5.0	3600	208-230/460	184T	E1704	14-12.4/6.2	570.
7.5	1750	208-230/460	213T	E720	21.4-19.6/9.8	802.
10	1750	208-230/460	215T	E721	28.6-26.4/13.2	1030.

TEFC AND EXPLOSION PROOF IN SINGLE AND THREE PHASE, AND TWO SPEED THREE PHASE MOTORS ALSO AVAILABLE.



Pulleys - Sheaves - Belts



Variable Pitch Sheaves

No.	Pitch Range		O.D.	Bores	Price
	4L & A	5L & B			
1VL34	1.9-2.9	2.4-3.2	3.15	1/2, 5/8	\$30.
1VL40	2.4-3.4	2.7-3.7	3.75	1/2, 5/8, 7/8	36.
1VL44	2.8-3.8	3.1-4.1	4.15	1/2, 5/8, 7/8	46.
1VP50	3.4-4.4	3.7-4.7	4.75	5/8, 7/8, 1 1/8	60.
1VP56	4.0-5.0	4.3-5.3	5.35	5/8, 7/8, 1 1/8	88.
1VP62	4.6-5.6	4.9-5.9	5.95	7/8, 1 1/8	140.
2VP42	2.6-3.6	2.9-3.9	3.95	1 1/8	126.
2VP50	3.4-4.4	3.7-4.7	4.75	7/8, 1 1/8	146.
2VP56	4.0-5.0	4.3-5.3	5.35	1 1/8, 1 1/8	172.

4L V-Belts

No.	Outside Length	Price
4L200	20"	\$10.00
4L210	21"	10.00
4L220	22"	10.00
4L230	23"	10.00
4L240	24"	10.00
4L250	25"	10.00
4L260	26"	10.00
4L270	27"	10.00
4L280	28"	14.00
4L290	29"	14.00
4L300	30"	14.00
4L310	31"	14.00
4L320	32"	14.00
4L330	33"	14.00
4L340	34	14.00
4L350	35"	16.00
4L360	36"	16.00
4L370	37"	16.00
4L380	38"	16.00
4L390	39"	16.00
4L400	40"	20.00
4L410	41"	20.00
4L420	42"	20.00
4L430	43"	20.00
4L440	44"	20.00
4L450	45"	24.00
4L460	46"	24.00
4L470	47"	28.00
4L480	48"	28.00
4L490	49"	28.00
4L500	50"	28.00
4L510	51"	28.00

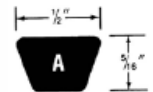


AK AND BK PULLEYS

No.	Pitch		O.D.	Bores	Price
	4L & A	5L & B			
AK28	2.6	-	2.8	3/4	\$26.
AK30	2.8	-	3.05	1	28.
AK44H	4.0	-	4.25	1, 1-3/16, 1-7/16	30.
AK46	4.2	-	4.45	3/4, 5/8, 1	48.
AK51	4.7	-	4.7	3/4, 1	52.
AK54	5.0	-	5.25	3/4, 1	54
AK56H	5.2	-	5.45	1, 1-3/16, 1-7/16	46.
AK64	6.0	-	6.25	3/4, 1	62.
AK64H	6.0	-	6.25	1, 1-3/16, 1-7/16	50.
AK74	7.0	-	7.25	3/4, 1	74.
AK74H	7.0	-	7.25	1, 1-3/16, 1-7/16	62.
AK84	8.0	-	8.25	1	90.
AK84H	8.0	-	8.25	1, 1-3/16, 1-7/16	72.
AK94	9.0	-	9.25	1	100.
AK94H	9.0	-	9.25	1, 1-3/16, 1-7/16	84.
AK104	10.0	-	10.25	1	106.
AK114H	11.0	-	11.25	1, 1-3/16, 1-7/16	98.
AK124H	12.0	-	12.25	1, 1-3/16, 1-7/16	108.
2AK51H	4.7	-	4.95	1, 1-3/16, 1-7/16	100.
2AK64H	6.0	-	6.25	1, 1-3/16, 1-7/16	114.
BK45	3.5	3.9	4.25	1	50.
BK50	4.0	4.4	4.75	1	54.
BK55	4.5	4.9	5.25	1	58.
BK75H	6.5	6.9	7.25	1, 1-3/16, 1-7/16	72.
2BK52H	4.2	4.6	4.95	1, 1-3/16, 1-7/16	100.
2BK70H	6.0	6.4	6.75	1, 1-3/16, 1-7/16	128.
2BK80H	7.0	7.4	7.75	1, 1-3/16, 1-7/16	148.
2BK90H	8.0	8.4	8.75	1, 1-3/16, 1-7/16	152.

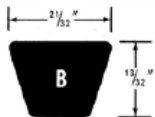
H BUSHING - 1" - 1-3/16" - 1-7/16".....\$18.

Size A V-Belt



No.	Outside Length	Price
A20	22"	\$12.00
A22	24"	12.00
A24	26"	12.00
A26	28"	12.00
A28	30"	12.00
A30	32"	12.00
A32	34"	16.00
A34	36"	16.00
A36	38"	16.00
A38	40"	20.00
A40	42"	20.00
A42	44"	20.00
A44	46"	24.00
A46	48"	24.00
A48	50"	28.00
A50	52"	28.00
A52	54"	28.00
A54	56"	32.00
A56	58"	32.00
A58	60"	32.00
A60	62"	32.00
A62	64"	32.00
A64	66"	32.00

Size B V-Belts



No.	Outside Length	Price
B36	38	\$28.00
B38	40	28.00
B40	42	32.00
B42	44	32.00
B44	46	32.00
B46	48	36.00
B48	50	36.00
B50	52	40.00
B52	54	40.00
B54	56	40.00
B56	58	40.00
B58	60	40.00
B60	62	42.00
B62	64	42.00
B64	66	42.00
B66	68	46.00
B68	70	46.00

Terminology

AHP. – Air Horsepower, is work done by the fan expressed as horsepower.

$$AHP = \frac{CFM \times TP}{6356}$$

BHP. – Brake Horsepower, is the horsepower absorbed by the fan.

BTU. – British Thermal Unit, is the amount of heat required to raise one pound of water from 63°F to 64°F.

CFM. – Cubic Feet Per Minute, is the volume of air moved per minute.

Capture Velocity – The air velocity at any point in front of a hood or at the hood opening necessary to overcome opposing air currents and capture the contaminated air by causing it to flow into the hood.

Conveying Velocity – The minimum air velocity required to move or transport particles within a duct system. Measured in feet per minute.

Drive Losses – Power lost in overcoming friction from the belt, pulley and bearing friction.

EDR. – Equivalent Direct Radiation, is the amount of heating surface which will give off 240 BTU. per hour.

FPM. – Feet Per Minute, is the velocity of the airstream.

Final Temperature – is the temperature of air after passing over heating coils under specified conditions.

Free Air Delivery – is the condition under which a fan operates when no static pressure or resistance is present.

HP. – Horsepower, is the actual rated output of the fan motor used.

ME. – Mechanical Efficiency, is the ratio of horsepower absorbed (BHP) to horsepower delivered by the fan (AHP).

$$ME = \frac{AHP}{BHP}$$

Plenum Chamber – is an air compartment maintained under pressure to serve one or more distributing ducts.

RPM. – Revolutions Per Minute, is the number of times the fan shaft revolves per minute.

Replacement Air – The term has been used in the same context as supply air, make-up, and intake air. It introduces fresh outside air into a structure to replace air exhausted from fans.

Standard Air – is air which weighs .075 pounds per cubic foot, which is dry air at 70°F dry bulb with a barometric pressure of 29.92 inches of mercury.

SE. – Static Efficiency, is expressed as

$$SE = \frac{CFM \times SP}{6356 \times BHP}$$

SP. – Static Pressure, is a measure of the force exerted by the fan in moving air through any ventilating system.

Stall – A region of instability on a fan performance curve. Evidence of this region is a dip in

the performance curve, also a drop in the BHP curve. It is caused by the separation of the air flow from the surface of the propeller blade or fan wheel.

Shut Off – is the point of operation where the fan flow rate is zero.

System – The path through which air is pushed or pulled. This normally includes ducts, coils, filter, plenum changer, etc., through which air flows. A system can be as simple as inducing air motion into a space or a network of ducts providing air for multiple locations.

TE. – or Total Efficiency, may be expressed as

$$TE = \frac{CFM \times TP}{6356 \times BHP}$$

TS. – Tip-Speed, is the peripheral speed in feet per minute of a propeller tip or fan wheel at any specified RPM.

TP. – Total Pressure, is the sum of the static pressure (SP), and velocity pressure (VP) at any given point in a ventilating system.

V. – Velocity, is equal to the flow rate (CFM) divided by the cross-sectional area of the air flow. $V = CFM \div \text{Area (Sq. Ft.)}$.

VP. – Velocity Pressure, is equal to the kinetic energy per unit volume of the flowing air. It can be calculated from the formula.

$$VP = \left[\frac{FPM}{4005} \right]^2$$

Transport Velocity – See Conveying Velocity.

Exhaust Hood Velocities

PROCESS	TYPE OF HOOD	AIRFLOW OR CAPTURE VELOCITY
Abrasive Blasting	Downdraft Hood Crossdraft Hood	60-100 CFM/ft ² of Floor 100 CFM/ft ² of Wall
Auto Parking Garage	2 Level	500 CFM/Parking Space
Bag Loading for Grain Elevators, Feed Mills, Flour Mills	Canopy Hood	100 CFM/ft ² Open Face Area 500 FPM Maximum
Ceramic: Dry Pan Dry Press Spraying (Lead Glaze)	Enclosure Hood Local at Die Local at Die At Supply Bin Booth Hood	200 FPM Thru All Openings 500 CFM 500 CFM 500 CFM 400 FPM (Face)
Cooling Tunnels (Foundry)	Enclosure Hood	75-100 CFM Per Running Foot of Enclosure
Core Sanding (on Lathe)	Downdraft Hood Under Work	100 FPM at Source
Crushers & Grinders	Enclosure Hood	200 FPM Thru Openings
Degreasing; Evaporation From Tanks	Canopy Hood	50-100 FPM
Forge (Hand)	Booth Hood	200 FPM at Face
Furniture Stripping Tank	Slot Hood	45 CFM/ft ² of Tank Area
Metal Cutting Bandsaw	Booth Hood	225 CFM/ft ² of Open Area
Metal Spraying	Booth Hood	a) 150 CFM/ft ² of Face Area, Non-toxic b) 200 CFM/ft ² of Face Area, Toxic
Outboard Motor Test Tank	Side Draft Hood	200 CFM/ft ² of tank openings
Packaging Machines	Booth Hood Downdraft Hood Complete Enclosure	50-100 FPM at Face 95-150 FPM Down 100-400 FPM Opening
Paper Machine	Canopy Hood	200-300 FPM at Face
Pickling Metals	Canopy Hood	200-250 FPM
Plating Metals	Canopy Hood	225-250 FPM
Restaurant Range	Hood Against Wall Island Type Hood	80 CFM/ft ² of Hood Area 125 CFM/ft ² of Hood Area
Spray Booth	Booth Hood	a) 200 CFM/ft ² for Face Area Up To 4 ft ² b) 150 CFM/ft ² for Face Area Over 4 ft ²
Steam Kettles	Canopy Hood	150 FPM at Face
Varnish Kettles	Canopy Hood	200-250 FPM at Face
Wire Impregnating	Covered Tanks	200 CFM/ft ² of Opening

Material Conveying Velocities

MATERIAL	AVG. VELOCITY TO CONVEY MATERIAL (FPM)
VERY FINE LIGHT DUST: Cotton Lint, Wood Flour, Litho Powder	2500-3000
DRY DUSTS & POWDERS: Fine Rubber Dust, Jute Lint, Cotton Dust, Light Shavings, Soap Dust	3000-4000
AVERAGE INDUSTRIAL DUST: Grinding Dust, Buffing Lint-Dry, Wool Jute Dust-Shaker Waste, Shoe Dust, Granite Dust, Silica Flour, General Material Handling, Brick Cutting, Clay Dust, Foundry-General, Limestone Dust, Packaging & Weighing Asbestos Dust in Textile Industries	3500-4000
HEAVY DUSTS Sawdust-Heavy & Wet, Metal Turnings, Foundry Tumbling Barrels & Shake-Out, Sandblast Dust, Wood Blocks, Brass Turnings, Cast Iron Boring Dust, Lead Dust	4000-4500
HEAVY OR MOIST: Lead Dusts with Small Chips, Moist Cement Dust, Asbestos Chunks From Transit Pipe Cutting Machines, Buffing Lint-Sticky, Quick-Lime Dust	4500 & Up

Recommended Air Changes

AREA TYPE	MINUTES PER CHANGE
ASSEMBLY HALL	3-10
BAKERY	1- 3
BAR	2- 4
BOWLING ALLEY	3- 7
BOILER ROOM	1- 3
CAFETERIA	3- 5
CHURCH	4-10
CLASSROOM	4- 6
ENGINE ROOM	1- 3
FACTORY	2- 7
FORGE SHOP	1- 2
FOUNDRY	1- 5
GENERATOR ROOM	2- 5
HOSPITAL	4- 6
KITCHEN	2- 3
LABORATORY	2- 5
LAUNDRY	2- 4
LOCKER ROOM	4-15
MACHINE SHOP	3- 6
MILL	3- 8
OFFICE	2- 8
RESTAURANT	5-10
RETAIL STORE	5-10
RESTROOM/TOILET	2- 5
TRANSFORMER ROOM	1- 5
WAREHOUSE	4-10

For any engineering or application questions please contact us at 617-868-1310, email fandistr@verizon.net Fax 617-864-3138. Equipment literature can be downloaded from our website www.fandistr.com

SPECIALISTS IN AIR MOVING EQUIPMENT

Fans – Blowers - Accessories Stocked In Cambridge, MA

Founded in 1962, Fan Distributors has been a leading supplier of ventilating equipment in the Northeast. More recently we have expanded our shipments to customers throughout the country and as far away as Hawaii. Our belief that helping our customers apply the correct system equipment and supplying that equipment in a cost effective timely manner has brought many referrals and repeat business. Please contact us for any information or ventilating products not found in our catalog.

Commercial Kitchen Hoods and Tempered Air Supply Units are Available.
Direct Fired, Compact Direct Fired, Indirect Fired and Electric.
Easy Wire Control Panels Available on all Models.

