

# Miss Southlake 2020

COMPETITION GUIDE

# content

03

## *Letter from the Executive Director*

Preparing for the Stage and Beyond  
Prepare Great Women for the World  
Prepare the World for Great World

---

Welcome to the Miss Southlake Organization

05

## *Meet the Current Titleholders*

Miss Southlake  
Miss Southlake's Outstanding Teen  
The Job 101

07

## *Miss Southlake Competition*

Miss Competition  
Competition Scoring Guide  
CMNH Fundraising  
Wardrobe  
Ad Page Sales & Submission  
Miss Competition Checklist

11

## *Outstanding Teen Competition*

Competition Scoring Guide  
Teen Competition  
Entrance Packages  
Wardrobe  
Ad Page Sales & Submission  
Teen Competition Checklist

15

## *Southlake Princess Experience*

About the Southlake Princess Program  
How to Get Involved  
Participation Packages

16

## *Miss Southlake 2020: Wonder of Women*

Competition Theme  
Venue: Date and Time  
Ticket Sales  
How to Stay Connected

---

## QUESTIONS?

---

For more information, contact DaNae Couch at:  
[danae@misssouthlake.org](mailto:danae@misssouthlake.org)



# Letter from Executive Director

## Welcome to the Miss Southlake Organization

I am a beneficiary of the outstanding legacy of the Miss Texas and Miss America Organizations. As a local titleholder, I competed four times with four different organizations before I was selected to serve as Miss Texas 2012. Each of my local directors and boards gave countless time, energy, talents, and resources to help shape me into who I am today.

Although several years have passed since I served as Miss Texas, my heart has never left this organization. The life skills that you learn through competing and serving as a titleholder aid you in every area of your life. That is ultimately why I decided to come back as a local director. I am excited to hit the ground running with innovative ideas to enrich the legacy of this program.

## Preparing Women for the Stage and Beyond

A major component of Miss Texas and Miss America is the competition. I have spent a majority of my life in different types of competitions. I began my competitive years in twirling, transitioned to the Miss America local, state, and national stage, and now compete in the courtroom. I know about the persistence and drive that it takes to train like a champion. We have assembled an exciting team of talented people who also know what it takes to reach the next level.

## Prepare Great Women for the World

As the largest scholarship provider for women, Miss America funds the academic dreams of its participants. Thanks in part to my scholarships from local competitions, Miss Texas, and Miss America, I graduated debt-free. As Malala Yousafzai said, “One child, one teacher, one book, one pen can change the world.” We are striving to increase the amount of scholarship assistance we can provide to our representatives and all of our candidates.

## Prepare the World for Great Women

Women’s voices are being heard like never before. We want to build on that movement by developing our representative’s advocacy skills and providing opportunities for her to advocate for her causes. By partnering with the Southlake local government and other local organizations, we can show our community the power of our program and our women.

We are so excited that you have chosen to participate in our organization! We are going to have a phenomenal year.

A portrait of DaNae Couch Lowe, Miss Texas 2012. She is a woman with long, dark, wavy hair, smiling at the camera. She is wearing a black, sleeveless dress with a cut-out detail on the shoulder and large, ornate earrings. Her arms are crossed in front of her.

*DaNae Couch Lowe*

DaNae Couch Lowe,  
Miss Texas 2012



# meet the titleholders

## MISS SOUTHLAKE 2019



TAYLOR KILPATRICK

**Scholastic Ambition:** Undergraduate Degree in Strategic Communication

**Platform:** 4-Wheel Drive 4 Success

**Talent:** Dance

## MISS SOUTHLAKE'S OUTSTANDING TEEN 2019



DANA FRIEND

**Scholastic Ambition:** Pursue a Career in Aviation

**Platform:** The Sky is the Limit - Women in Aviation

**Talent:** Dance



# the job 101

Miss Southlake and Miss Southlake's Outstanding Teen are the most visible external facing representative of the mission of the Miss Southlake Scholarship Organization ("MSSO") program to the public. As a member of the MSSO team, she is responsible for positively advancing the goals and objectives of MSSO as well as her own Social Impact Initiative.

Miss Southlake and Miss Southlake's Outstanding Teen will work with the MSSO team to develop goals and execute on tactics to advance her chosen Social Impact Initiative, setting metrics and developing partnerships which will show positive results at the end of her year.

In addition, Miss Southlake also serves as an advocate for the Children's Miracle Network; raising funds and awareness for families who otherwise would not be able to afford quality medical care in urgent circumstances.

As such, public speaking is an essential role of Miss Southlake. She researches and prepares speeches and presentations to deliver to audiences of all sizes. She is a representative of MSSO with sponsors, students, and the Southlake community.

A first step to continuing her education and career, the job of Miss Southlake is a once-in-a-lifetime experience that carries with it service above self.



## PRIVATE INTERVIEW

The ten-minute interview provides insight into the candidate's ability to fulfill the responsibilities outlined in the Miss Southlake job description and contract. It gives the judges the opportunity to learn about your unique qualities, commitment to advance your social impact initiative, accomplishments beyond your resume, and your own personal beliefs.

## TALENT

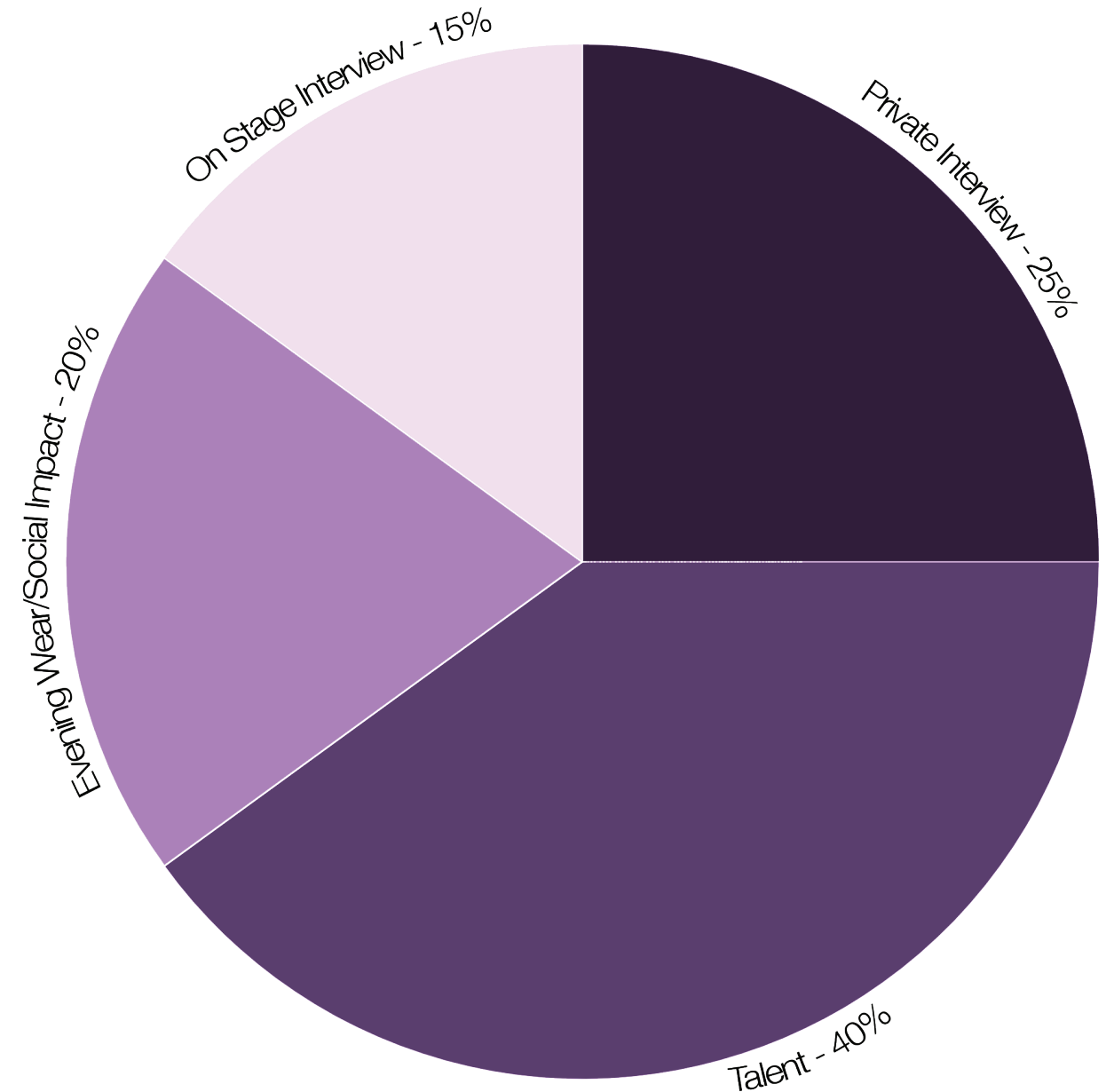
The ninety-second talent portion of the competition allows insight into the candidate's preparatory and performance skills. The talent presentation, overall performance, and technical ability and skill are taken into consideration.

## SOCIAL IMPACT INITIATIVE

The Evening Wear and Social Impact Initiative competition allows a candidate to showcase their own personal style, attitude, personality, and presence while making their own brief statement about her mission. In one to three sentences, how would you pitch your initiative?

## ON-STAGE INTERVIEW

This phase of competition advances the same criteria as the personal interview by bringing it to the stage in an interactive and energetic way. It allows the audience to get to know the candidate as they showcase their intelligence, personality, charisma, and aptitude for the job of Miss Southlake.





# CMNH FUNDRAISING

## ABOUT THE PARTNERSHIP

Children’s Miracle Network Hospitals is the official social impact initiative of the Miss America Organization.

All Candidates are required to raise \$100 at minimum for Children’s Miracle Network Hospitals prior to competing in a local competition.

## FUNDRAISING DETAILS

Candidates must register profiles at [www.MissAmericaForKids.org](http://www.MissAmericaForKids.org). People can donate money directly to CMNH through your individual candidate profile. Prior to the competition, each candidate must raise \$100. Submit confirmation of this to [danae@misssouthlake.org](mailto:danae@misssouthlake.org).

# WARDROBE

REHEARSALS	Comfortable, Active Wear
OPENING NUMBER	Black Cocktail Attire - Candidate’s Choice
PRIVATE INTERVIEW	Interview Attire - Candidate’s Choice
TALENT	Costume - Candidate’s Choice
EVENING WEAR & SOCIAL IMPACT INITIATIVE	Category is ‘Red Carpet Glamour’ Candidate’s Choice
ON-STAGE INTERVIEW	Interview Attire - Candidate’s Choice

# AD PAGES & SUBMISSION

PRICING INFORMATION		SUBMISSION DETAILS
1/4 Page Ad	\$25	Submit to <a href="mailto:danae@misssouthlake.org">danae@misssouthlake.org</a>
1/2 Page Ad	\$50	Subject: AD PAGE - Candidate Name
Full Page Ad	\$100	Attach Ad as JPG
		Make design requests in email body
		<b>Deadline: August 11, 2019</b>

# MISS COMPETITION CHECKLIST

- Complete Local Contract including, but not limited to, the following attachments:
  - A copy of your birth certificate
  - A copy of your Driver’s License or other government issued ID
  - FRONT/BACK copy of your medical, dental, and prescription cards, if applicable
  - An Official Transcript from your Current School or the School from which you have graduated

*Tips for Filling Out the Contract:*

- a. When filling in the blanks for the organization or the title, please type ‘Southlake’ in the blank, not Texas.
- b. Please make sure to **initial and date** the bottom right hand corner of EACH page of the contract, even if there is not a line for it.
- c. If you have competed in a local in the 2020 Competition cycle, these rules may vary. Contact us for further information.

- Submit Headshot in .jpg or .pdf format and preferably sized for 8x10. No cropped pictures will be accepted. Deadline Sunday, August 11, 2019.
- Submit Judges’ Resume - 8 Copies.
- Submit Social Impact Statement, Signed and Dated - 8 Copies. Do not exceed one page.
- Submit 90-Second Talent Music.
- Raise \$100 for Children’s Miracle Network Hospitals. Submit Confirmation to [danae@misssouthlake.org](mailto:danae@misssouthlake.org).
- Ad Page Purchase Form(s), if applicable. See specific Ad Page Submission Instructions. Deadline August 11, 2019.

All paperwork, ad sales, headshots, and talent music should be submitted via email, mail or in person by no later than Sunday, August 11, 2019, our entry deadline. If any missing items are discovered, those items must be turned in by no later than Thursday, August 15, 2019. Items can be mailed to [danae@misssouthlake.org](mailto:danae@misssouthlake.org) or mailed to:

Miss Southlake Scholarship Organization  
1905 Lantana Lane  
Irving, Texas 75063



# PRIVATE INTERVIEW

The six-minute interview provides insight into the candidate's ability to fulfill the responsibilities outlined in the Miss Southlake's Outstanding Teen description. It gives the judges the opportunity to learn about your unique qualities, commitment to advance your social impact initiative, accomplishments beyond your resume, and your own personal beliefs.

# TALENT

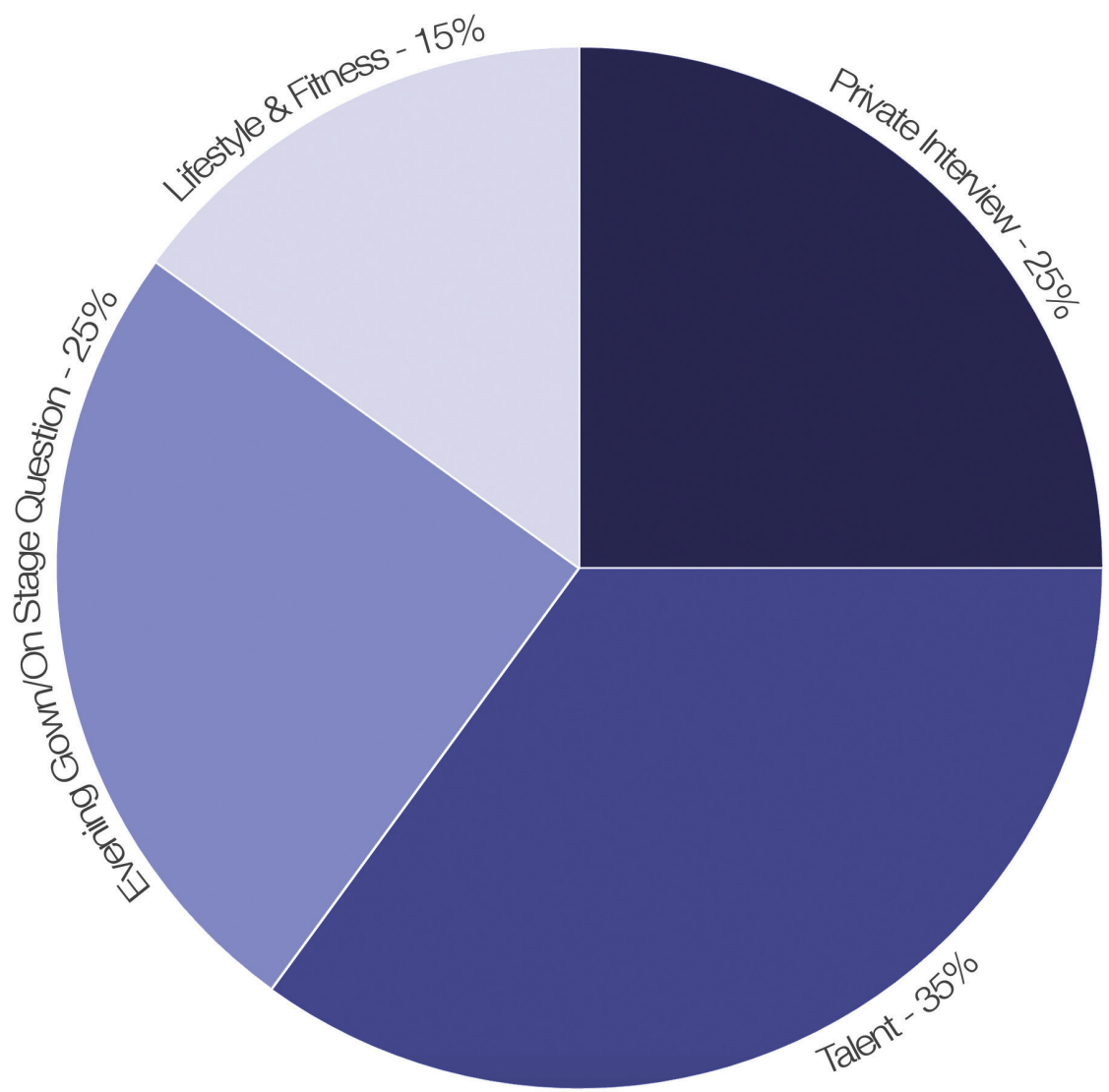
The ninety-second talent portion of the competition allows insight into the candidate's preparatory and performance skills. The talent presentation, overall performance, and technical ability and skill are taken into consideration.

# EVENING GOWN & QUESTION

This phase of competition is designed to assess the candidate's beauty, poise, grace, and commanding stage presence as well as her ability to answer a question with eloquence and intelligence in front of the audience.

# LIFESTYLE & FITNESS

This phase of competition is designed to see how well the candidate maintains a lifestyle of good physical health and the candidate's ability to exude confidence and self-assurance. Candidates will wear aerobic or active-wear clothing, NOT a swimsuit.





# ENTRANCE PACKAGES

## OPTION A

Entrance Fee

\$150

## OPTION B

Entrance Fee  
Full Page Ad

\$200

# WARDROBE

REHEARSALS

Comfortable, Active Wear

OPENING NUMBER

Black Cocktail Attire - Candidate's Choice

PRIVATE INTERVIEW

Interview Attire - Candidate's Choice

TALENT

Costume - Candidate's Choice

EVENING WEAR &  
ON-STAGE QUESTION

Evening Wear - Candidate's Choice

LIFESTYLE & FITNESS

Active Wear - Candidate's Choice

# AD PAGES & SUBMISSION

## PRICING INFORMATION

1/4 Page Ad	\$25
1/2 Page Ad	\$50
Full Page Ad	\$100

## SUBMISSION DETAILS

Submit to [danae@misssouthlake.org](mailto:danae@misssouthlake.org)  
Subject: AD PAGE - Candidate Name  
Attach Ad as JPG  
Make design requests in email body

**Deadline: August 11, 2019**

# TEEN COMPETITION CHECKLIST

- Complete Local Contract including, but not limited to, the following attachments:
  - A copy of your birth certificate
  - A copy of your Driver's License or other government issued ID
  - FRONT/BACK copy of your medical, dental, and prescription cards, if applicable
  - An Official Transcript from your Current School or the School from which you have graduated

**Tips for Filling Out the Contract:**  
a. When filling in the blanks for the organization or the title, please type 'Southlake' in the blank, not Texas.  
b. Please make sure to **initial and date** the bottom right hand corner of EACH page of the contract, even if there is not a line for it.  
c. If you have competed in a local in the 2020 Competition cycle, these rules may vary. Contact us for further information.

- Submit Headshot in .jpg or .pdf format and preferably sized for 8x10. No cropped pictures will be accepted. Deadline Sunday, August 11, 2019.
- Submit Judges' Resume - 8 Copies.
- Submit Social Impact Statement, Signed and Dated - 8 Copies. Do not exceed one page.
- Submit 90-Second Talent Music.
- Ad Page Purchase Form(s), if applicable. See specific Ad Page Submission Instructions. Deadline August 11, 2019.

All paperwork, ad sales, headshots, and talent music should be submitted via email, mail or in person by no later than Sunday, August 11, 2019, our entry deadline. If any missing items are discovered, those items must be turned in by no later than Thursday, August 15, 2019. Items can be mailed to [danae@misssouthlake.org](mailto:danae@misssouthlake.org) or mailed to:

Miss Southlake Scholarship Organization  
1905 Lantana Lane  
Irving, Texas 75063



# Southlake Princess Experience

# Wonder Of Women

**If possible, we would like each contestant to have at least one princess.**

The Princess Program is designed to promote early involvement in the Miss America program. It was designed as a mentoring program and gives young girls a chance to learn more about what being a local or state titleholder involves. Young ladies must be between the ages of six and 12 years and cannot be older than 12 years by the date of the Miss Texas Pageant in June 2020.

**The standard fee to be a Southlake Princess is \$50.** Princesses will participate on stage during the Miss and Teen Evening Wear portions of the competition on Saturday, August 17. During the Evening Wear Competition, they will walk out, interact with their candidate, and escort her off the stage. After the Evening Wear Competitions have concluded, they will be announced individually on stage.

Once you have chosen your Princess, please notify us and provide us with their contact information. We will send them registration paperwork that they will need to send with their payment, and we will coordinate the competition details with them. If you need help finding a princess, please let us know. It really does make the experience fun, though, if you choose a princess with which you have a personal relationship.

**Southlake Princess Registration Paperwork and Payments are due by no later than Sunday, August 11, 2019. For additional information, contact [danae@misssouthlake.org](mailto:danae@misssouthlake.org).**

If you win the title of Miss Southlake, your Southlake Princess will have the option of being your Lone Star Princess for the year. If she chooses to be your Lone Star Princess, her **\$50 Southlake Princess fee will be applied to her Lone Star Princess registration fee for Miss Texas.** For more information on the Lone Star Princess Program, please visit <http://www.misstexas.org/lone-star-princess.html>.

## PARTICIPATION PACKAGES

### STANDARD

Participation Fee

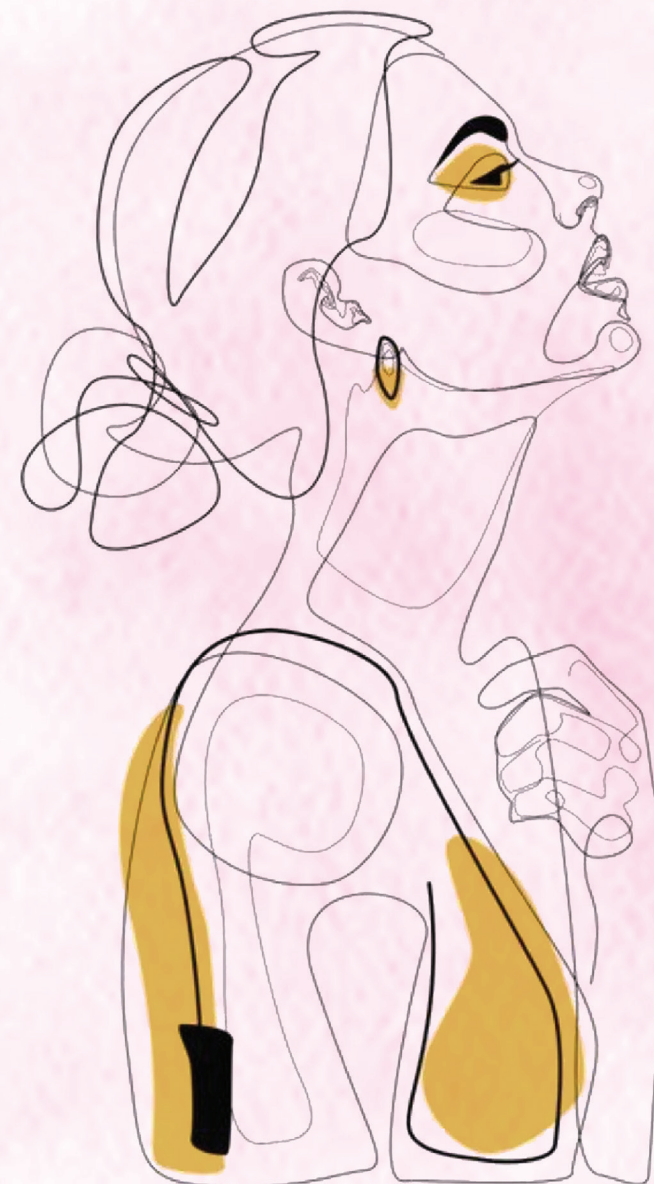
**\$50**

### PREMIERE

Participation Fee  
1/2 Page Ad

**\$75**

RIGHT: Miss Southlake and Miss Southlake's Outstanding Teen with Lone Star Princesses at Miss Texas 2019.



**I AM A WOMAN. PHENOMENALLY.  
PHENOMENAL WOMAN. THAT'S ME.  
-MAYA ANGELOU**

*Celebrating the  
intellect,  
activism,  
passion,  
and drive  
of  
game-changing women  
at the  
Hilton Southlake Town Square  
on August 17, 2019 at 7:00 p.m.*

*Share your #WonderOfWomen!*  
**#MissSouthlake2020**  
f MissSouthlakeOrg i @MissSouthlakeTX g www.missouthlake.org



