



# Fantech

AUGUST 2008

## RVF SERIES

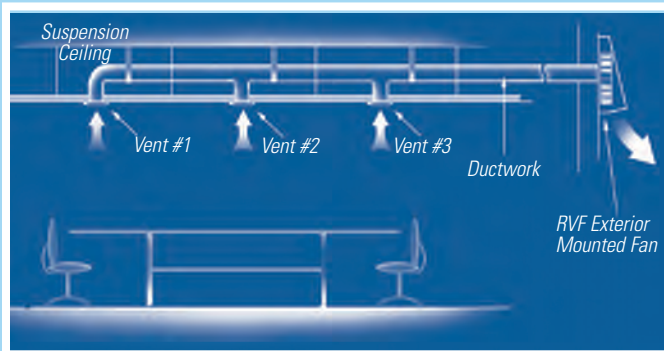
### EXTERIOR-MOUNT EXHAUST FANS

Fantech RVF fans have been specially designed to provide quiet ventilation for commercial and residential applications. Fan motor mounts on outside wall of building. Powder-coated galvanized steel housing protects the dependable external rotor motor from the elements. Choose from five models featuring 4", 6" or 8" duct and CFM ranges from 134 to 435.

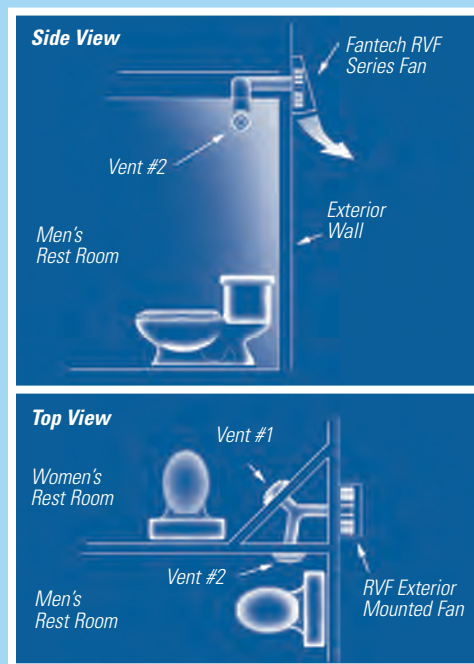
#### Get Connected With Ease

Fantech RVF Series fans are lightweight, compact, and simple to install. No installation extras are required. Just mount the fan to the wall and connect the electrical supply to the conveniently located terminal box. The housing is removable for immediate access to the motor and wiring connections.

#### CONFERENCE ROOM APPLICATION



#### DUAL BATH APPLICATION



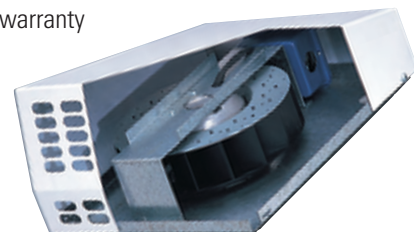
Look for the Energy Star  
Rated Models in Performance  
Data Chart on back page



### RUGGED FEATURES HELP RVF FANS WITHSTAND THE ELEMENTS:

- Galvanized steel housing features baked powder-coat finish (can be painted to match siding, brick or stucco)
- External rotor motor with totally enclosed design allows fans to operate in high moisture, lint and dust laden air
- Permanent split capacitor motors feature automatic reset thermal overload protection and sealed ball bearings for long life and maintenance-free operation
- All motors and impellers are designed as one integral unit, allowing for excellent motor heat dissipation, even at low RPM
- Permanently lubricated sealed ball bearings

- 100% speed controllable for highly efficient and economical airflow
- Excellent heat dissipation, ensuring long motor life
- Suitable for airstream temperatures of up to 140° F
- Five-year factory warranty
- HVI Certified
- UL Listed;  
CSA Certified



Cutaway view of RVF 4XL

IMPROVING INDOOR AIR QUALITY THROUGH BETTER VENTILATION

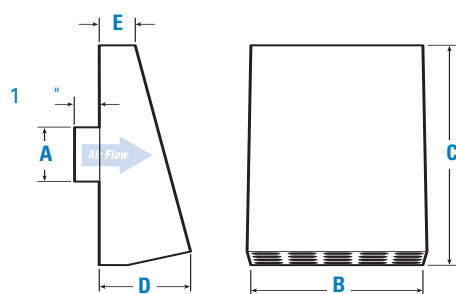
[www.fantech.net](http://www.fantech.net)

# RVF SERIES

## EXTERIOR-MOUNT EXHAUST FANS



### DIMENSIONAL DATA



model	A <sup>1</sup>	B	C	D	E
RVF 4	4	10 <sup>1</sup> / <sub>4</sub>	13	6	2 <sup>3</sup> / <sub>4</sub>
RVF 4XL	4	10 <sup>1</sup> / <sub>4</sub>	13	6	2 <sup>3</sup> / <sub>4</sub>
RVF 6	6	10 <sup>1</sup> / <sub>4</sub>	13	6	2 <sup>3</sup> / <sub>4</sub>
RVF 6XL	6	14 <sup>1</sup> / <sub>4</sub>	17	6	2 <sup>3</sup> / <sub>4</sub>
RVF 8XL	8	14 <sup>1</sup> / <sub>4</sub>	17	6	2 <sup>3</sup> / <sub>4</sub>

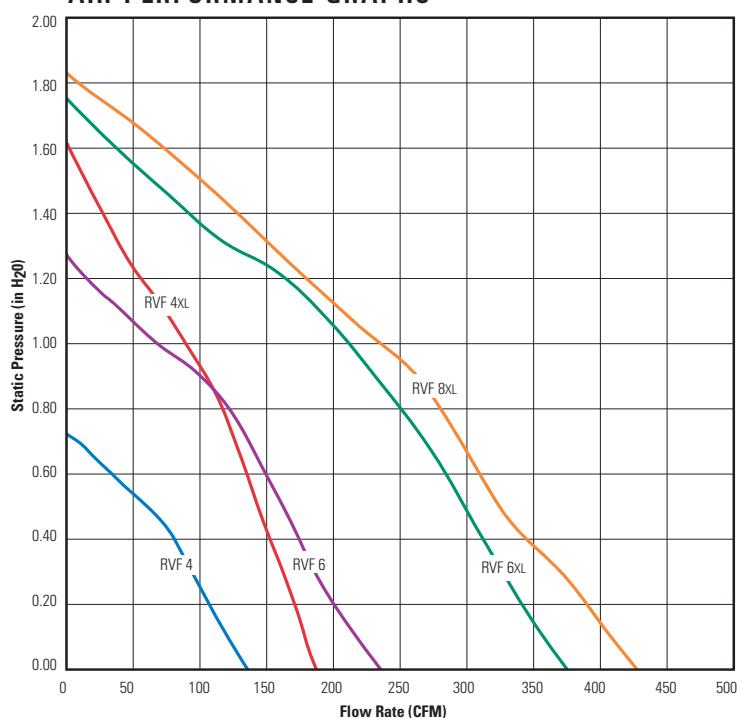
All dimensions in inches.  
<sup>1</sup> Duct connection is 1/8" smaller than duct size.

**FIVE  
YEAR  
WARRANTY**



Look for the Energy  
Star Rated Models  
in Performance  
Data Chart.

### AIR PERFORMANCE GRAPHS



### PERFORMANCE DATA

Fan Model	Energy Star	RPM	Volts	Rated Watts	Wattage Range	Max. Amps	Static Pressure in Inches W.G.								Max. Ps	Duct Dia.
							0"	0.1"	0.2"	0.4"	0.6"	0.8"	1.0"	1.5"		
RVF 4	✓	3060	115	19	15 – 19	0.17	134	120	112	83	37	—	—	—	0.78"	4"
RVF 4XL	—	2700	115	92	73 – 92	0.84	193	180	172	154	136	118	91	—	1.61"	4"
RVF 6	—	2550	115	92	78 – 93	0.84	242	220	204	177	150	123	68	—	1.27"	6"
RVF 6XL	—	3000	115	149	145 – 157	1.46	381	360	346	315	285	258	213	64	1.74"	6"
RVF 8XL	—	2900	115	151	140 – 155	1.42	435	410	392	348	312	282	235	102	1.82"	8"

RVF Series performance is shown with ducted inlet. Per HVI's Certified Ratings Program, charted air flow performance has been derated by a factor based on actual test results and the certified rate at .1 inches WG.



**Fantech**

**United States** 1712 Northgate Blvd. • Sarasota, FL. 34234 • 1.800.747.1762 • [www.fantech.net](http://www.fantech.net)  
**Canada** 50 Kanaflikt Way • Bouctouche, NB E4S 3M5 • 1.800.565.3548 • [www.fantech.ca](http://www.fantech.ca)

Item #: 450483  
 Rev Date: 082208

Fantech, reserves the right to modify, at any time and without notice, any or all of its products' features, designs, components and specifications to maintain their technological leadership position.