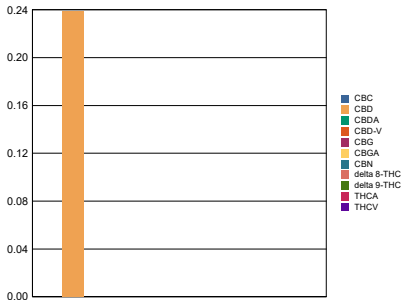


Sample Information			RS (GCMS-MS)	ppm	RL	Terpenes (HPLC)	mg/g	%
Sample Identification	Lotion		<b>Compound</b>			<b>Compound</b>		
Laboratory Number	2001225-02		Acetone	NT	NT	alpha-Bisabolol	NT	NT
Batch Number	#004		Acetonitrile	NT	NT	(-)-Borneol and (+)-Borneol	NT	NT
Matrix	Products		Benzene	NT	NT	Camphene	NT	NT
<b>Cannabinoid (HPLC)</b>			n-Butane	NT	NT	Camphor	NT	NT
<b>Compound</b>	<b>%</b>	<b>mg/g</b>	Carbon Tetrachloride	NT	NT	beta-Caryophyllene	NT	NT
THCA	ND	ND	Chloroform	NT	NT	trans-Caryophyllene	NT	NT
delta 9-THC	ND	ND	1,2-Dichloroethane	NT	NT	Caryophyllene Oxide	NT	NT
delta 8-THC	ND	ND	Ethanol	NT	NT	alpha-Cedrene	NT	NT
THCV	ND	ND	Ethyl acetate	NT	NT	Cedrol	NT	NT
CBGA	ND	ND	Ethylene oxide	NT	NT	Endo-fenchyl Alcohol	NT	NT
CBDA	ND	ND	n-Heptane	NT	NT	Eucalyptol	NT	NT
CBD	0.24	2.39	n-Hexane	NT	NT	Fenchone	NT	NT
CBD-V	ND	ND	iso-Butane	NT	NT	Geraniol	NT	NT
CBN	ND	ND	iso-Pentane	NT	NT	Geranyl acetate	NT	NT
CBG	ND	ND	Methylene Chloride	NT	NT	Guaiol	NT	NT
CBC	ND	ND	n-Pentane	NT	NT	Hexahydrothymol	NT	NT
<b>Cannabinoids Total</b>			Propane	NT	NT	alpha-Humulene	NT	NT
Max Active THC	0.00	0.00	2-Propanol (IPA)	NT	NT	Isoborneol	NT	NT
Max Active CBD	0.24	2.39	Tetrahydrofuran	NT	NT	Isopulegol	NT	NT
T.Active Cannabinoids	0.24	2.39	Toluene	NT	NT	Limonene	NT	NT
Total Cannabinoids	0.24	2.39	Trichloroethene	NT	NT	Linalool	NT	NT
<b>Max Active Ratios</b>			o-Xylene	NT	NT	p-Mentha-1,5-diene	NT	NT
NA : 1 CBD to THC			Xylenes (m,p)	NT	NT	beta-Myrcene	NT	NT
0.00 :1 THC to CBD						trans-Nerolidol	NT	NT

**Cannabinoid (%)**



Metals	ppm	RL
<b>Compound</b>		
Arsenic	NT	NT
Cadmium	NT	NT
Lead	NT	NT
Mercury	NT	NT
<b>Percent Moisture</b>		
NT %		
<b>Water Activity</b>		
NT		

RL = Reporting Limit  
 NA = Not Applicable  
 NT = Not Tested  
 ND = Non Detected