

MONMOUTH POTTERY



1927

Monmouth
POTTERY

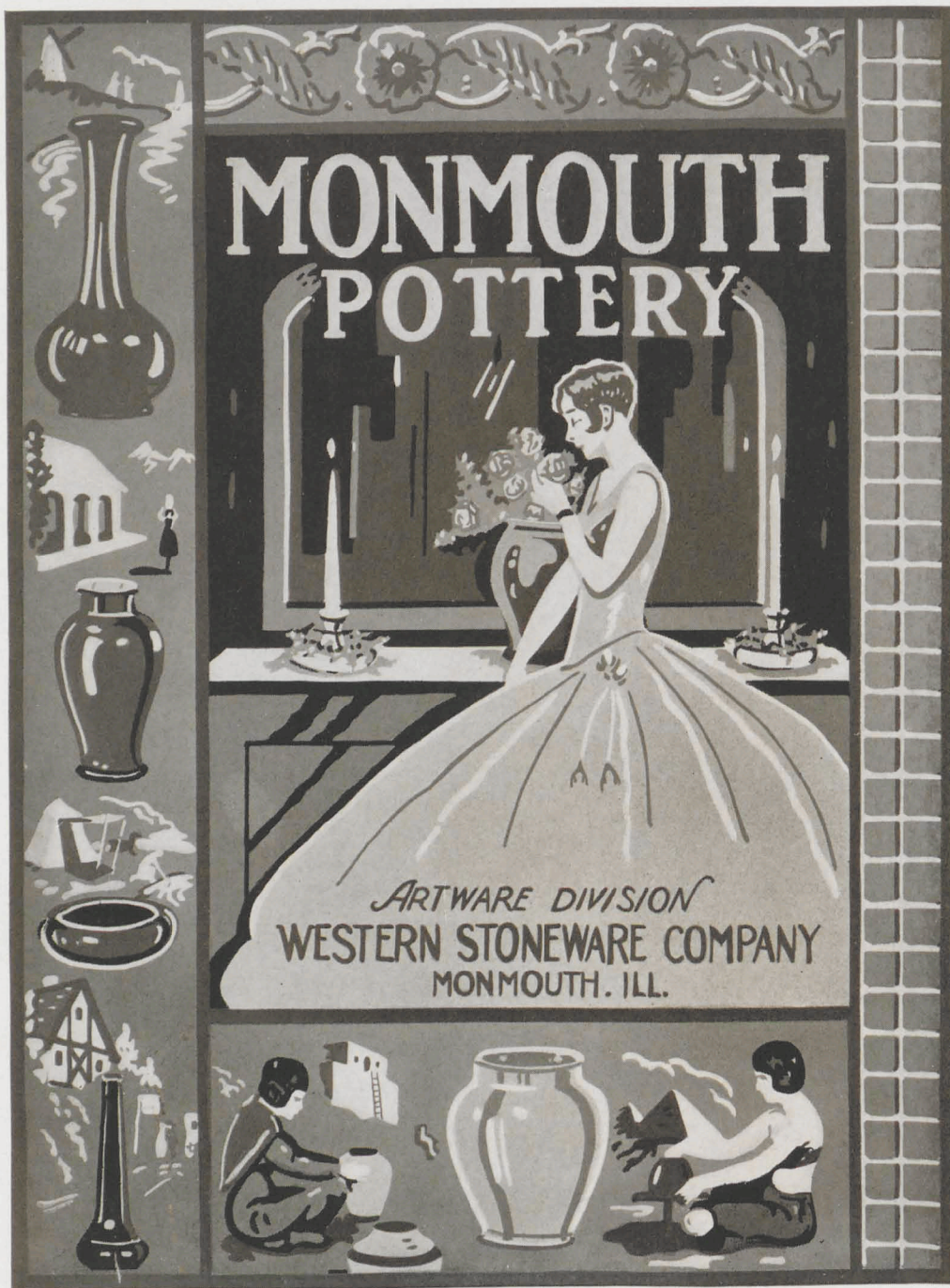


Artware Division
OF THE
WESTERN STONEWARE COMPANY
MONMOUTH, ILLINOIS

Chicago Office and Warehouse, 124-130 WEST 46TH PLACE

TELEPHONES BOULEVARD 7107-7108

Display Room, 186 NORTH LA SALLE STREET



*Reproduction of our brilliantly colored window poster which
advertises and promotes the sale of "Monmouth Pottery"*

INTRODUCTION

IN producing MONMOUTH POTTERY it is the aim of the *Western Stoneware Company* to offer a complete line of Art Ware which will fill the greatest demand, increasing and improving it from time to time in order that we may give to the merchants a superior and distinctive ware, and, at the same time, render to the people a worthwhile service.

I. F. DAINS

PRESIDENT

COPYRIGHT 1927, BY
THE WESTERN STONEWARE COMPANY

LAMPS

No. 410—"D" LAMP
(below)

THE "D" lamp is also suitable for the small living room. The slender, graceful shape adds a singular charm. It stands 14½ inches to the top of the socket and has a carved mounting finished in antique bronze.



No. 409—"C" LAMP
(above)

THIS lamp is admirably suited to the small living room. It stands 12½ inches high to the top of the socket. The base has an engraved design and is finished in antique green bronze effect.



WESTERN STONEWARE COMPANY, MONMOUTH, ILLINOIS



No. 363

PANEL JAR LAMP

THE PANEL JAR LAMP is patterned from an old Chinese ginger-jar. The design is carved in six panels of three repeating sides, and is finished in pastel shades of blue and green. This makes an unusual and attractive end-table light.



No. 461

SMALL TABLE LAMP

THIS LAMP is something new and meets the demand for a small, artistic reading lamp.



No. 407

"A" LAMP

A LAMP designed for use at the bedside or on the dressing table. It is mounted on a carved base of antique bronze finish.

LOW BOWLS



No. 400—4" diameter

No. 400 when containing a growing narcissus bulb may be used in pairs as end pieces of a console set.



No. 401—6" diameter

Nos. 402 and 403 make excellent fruit bowls, or, when used with a flower block, furnish an attractive centerpiece.



No. 402—8" diameter



No. 403—10" diameter

WESTERN STONEWARE COMPANY, MONMOUTH, ILLINOIS

ROSE BOWLS



No. 434—6½" diameter



No. 435—8" diameter



No. 436—9" diameter

As the name implies, these bowls are designed to permit the facile arrangement of roses or other bushy flowers.

JARS

A SMALL JAR adapted to violets or short stemmed flowers. It has a roughened or hand-turned effect.



No. 437—4½" high

THIS JAR is suitable for sweet peas or flowers with medium length stems. The finish gives the effect of being turned by hand.



No. 438—6" high



No. 431—6" diameter

LILY BOWLS



No. 432—8" diameter

THESE BOWLS are similar to Nos. 401-402-403, though deeper, making them suitable for Lily Bowls.



No. 433—10" diameter

SMALL BOWL *(left)*



No. 406—5" diameter

THIS small flat BOWL is useful as a pin or handy tray or makes an ideal bowl for pansies.

POWDER JAR *(right)*

THIS flat covered JAR adds charm to the vanity dresser as a powder container.



No. 443

FLOWER BLOCKS



No. 439
3" diameter

Nos. 439 and 440 are plain and inexpensive flower arrangers. The small one has nine holes and the larger 21 holes.



No. 440
4½" diameter



No. 441—5" long

THE DUCK adds charm in the center of a low bowl.



No. 442—5" high

THE BIRD has holes thru his back and lends a unique effect when used in the center of a flower bowl.

The FISH Flower Block offers a very appropriate motif, decoratively executed.



No. 449—5" long

PITCHERS



No. 424—Capacity 7 Pints

UTILITY PITCHER

(left)

THIS PITCHER can be used to advantage wherever a large pitcher is needed, and, being glazed in bright colors, adds charm to the service.

LEMONADE PITCHER

(right)

AN excellent pitcher for serving cold drinks. It keeps liquid cold longer than glass and lends a touch of color.



No. 405—Capacity 6 Pints

WESTERN STONEWARE COMPANY, MONMOUTH, ILLINOIS



No. 453—One Pint

THESE PITCHERS are designed for general table service and add an artistic touch wherever used.



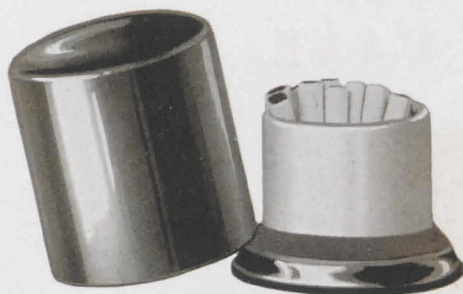
No. 454—One Pint



No. 455—7" high

CIGAR JAR

Just the thing to keep a few cigars fresh and handy. Or it may be used as a candy jar.



No. 427

CIGARET JAR

THE CIGARET JAR keeps cigarettes fresh and adds a distinctive touch to the smoking stand or table.

TABLE JAR



No. 404

THIS JAR, in the form of an acorn, can be used either as a table jar for mayonnaise or relish, or as a small candy jar.

RING JAR



No. 444

A QUAIN shape, and practical as a candy or table jar. This ring jar offers new artistry in the field of pottery.

FLOOR VASE



No. 465—26" high

THIS tall VASE has a delicately formed strength of outline, and is used either in interior decoration or for outdoor porch or garden service.

WESTERN STONEWARE COMPANY, MONMOUTH, ILLINOIS

FLOWER URN



No. 423—10" high

THIS LARGE JAR is well adapted to floral arrangements on the porch or in the garden, though equally useful as a central spot in interior decoration.

WESTERN STONEWARE COMPANY, MONMOUTH, ILLINOIS

FLOWER JARS



No. 425—8" high

(left)

A GRACEFUL yet sturdy form designed for bushy flowers.



No. 458—10" high

(right)

THIS FLOWER JAR has the appeal of hand-made ware. It is attractive in line and substantial in form.

VASES



No. 417—8" high

(left)

THIS vase exhibits the grace and simplicity of the Chinese pottery. The flaring base affords a firm footing. An ideal vase for average size flowers.



No. 419—10" high

(right)

THE 10" vase has the same graceful outline as No. 417, though, being taller, is better adapted to flowers with longer stems.

WESTERN STONEWARE COMPANY, MONMOUTH, ILLINOIS

VASES



No. 445—8½" high

(left)

THIS flaring vase is created to fill a demand for a piece of distinctive appeal. The pattern is Chinese in character and is skillfully carved in the ware.

(right)

AN excellent shape for long stemmed flowers. The upper half or neck of the vase has conventional modeling resembling flower petals.



No. 418—10" high

CUT-FLOWER VASES



No. 446—7" high



No. 447—9" high



No. 448—11" high

THESE three VASES are designed to fill the need for a simple yet graceful container for flowers.

WESTERN STONEWARE COMPANY, MONMOUTH, ILLINOIS



No. 416—6" high
THIS VASE is useful
wherever a small vase
is desired.

BUD VASES



No. 456—5½" high
THIS VASE has excellent
decorative value.



No. 420—5" high
SMALL BUD VASES may
be used to advantage
in pairs.



No. 429—7" high
THIS is a very prac-
tical shape.



No. 422—6¾" high
A BUD VASE of unusual
grace and character.

WALL POCKETS



No. 426—10" high

(left)

WALL POCKET No. 426 is Grecian in line and character. Its outline lends a touch of grace to the wall wherever used.



No. 428—10" high

(right)

THIS WALL VASE resembles a partly opened flower and is executed with natural simplicity.

WESTERN STONEWARE COMPANY, MONMOUTH, ILLINOIS

CANDLE HOLDERS



No. 415

THE CANDLE FLOWER HOLDER is intended for use in a low bowl. A long tapered candle is placed in the holder and flowers arranged in the holes, making an unusual centerpiece.



No. 457

SWAN FLOWER ADAPTOR. The beauty of the swan is attractively formed into a combination candle holder and flower arranger.



No. 414—7" high

A SIMPLE CANDLESTICK harmonizing in design with bowls 402 and 403.



No. 467—7¼" high

DOLPHIN CANDLESTICK. This candlestick is a unique interpretation of the dolphin motif utilized as a candle support.

BOOK ENDS



No. 459—ELEPHANTS

THE idea of force which these elephants portray suggests book ends.

No. 460—OWLS

THE OWL suggests wisdom and stands as the symbol of literature and learning.



ASH TRAYS



No. 466—HAND ASH TRAY

THIS ASH TRAY is an early American design adapted to modern use.



No. 462—SHELL ASH TRAY

THIS TRAY has the graceful flutes of the clam shell and makes an excellent article for a man's dresser.

NOVELTIES

No. 450
FROG ASH RECEIVER

(right)

THE FROG is always ready to swallow and conceal cigarette or cigar ashes.



No. 412—BIRD

(left)

THIS BIRD has character and you never cease to wonder what thoughts he has for his friends.

No. 464—TEA BELL

(right)

A charming gift item, which is used as a tea or maids' bell.



No. 463—MARINE HUMIDOR

(left)

THIS novel "Marine" makes a fine tobacco humidor or cigar jar.

DULL FINISH LINE

FERN DISHES



No. 350—6" diameter



No. 351—7" diameter



No. 352—9" diameter

THESE FERN DISHES make a decorative receptacle for low potted plants.

LOTUS JARDINIÈRES

VERY practical and have a conventional lotus bud motif.



No. 361—7½" diameter



No. 362—9" diameter



LOTUS VASE

A CUT FLOWER VASE designed to harmonize with the Lotus Jardinières.

No. 364
12" high

JARDINIERES



No. 353—7" diameter



No. 354—9" diameter



No. 355—11" diameter

THESE three
JARDINIERES
are very at-
tractively

modeled and
add an artistic
appeal to pot-
ted plants.

ASH TRAY



No. 356—6" diameter

THIS PIPE-KNOCKER ASH TRAY has a knob in the center which offers a ready base to rap ashes from a pipe.

CONSOLE SET

THIS set is excellent for a small console. It is highly decorative as well as very moderate in price. The BOWL is No. 359 and the CANDLE STUMPS are No. 360.



No. 360



No. 359



No. 360

WESTERN STONEWARE COMPANY, MONMOUTH, ILLINOIS



No. 357—6" diameter

BULB DISHES

THESE BULB DISHES may be used as low flower bowls, for bulbs, or artificial lilies.

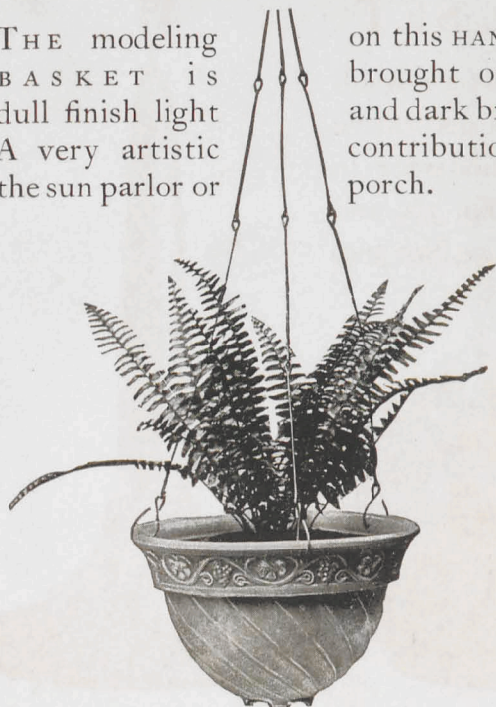


No. 358—9" diameter

HANGING BASKET

THE modeling BASKET is dull finish light A very artistic the sun parlor or

on this HANGING brought out in and dark brown. contribution to porch.



No. 313—10" diameter

CEMETERY JARDINIERE



No. 315

THIS article is something new. It permits the temporary use of potted plants in the garden and will accommodate a 5" flower pot.

PORCH JARDINIERE



No. 451—22" high

THE Porch Jardiniere has many possibilities for porch and lawn decoration. It may also be used to excellent advantage indoors. The two sections may be separated—the top used as a jardiniere and the bottom for an umbrella stand. It accommodates an 8" flower pot.

WESTERN STONEWARE COMPANY, MONMOUTH, ILLINOIS

FLOOR JARDINIERE



No. 452—24" high

THE Floor Jardiniere is made for use either in- or out-
doors, though more appropriate for interior decora-
tion. A 6" flower pot will fit inside the jardiniere.

RUSTIC JARDINIERE



No. 304—10" diameter

THIS is one of our most popular items. Very attractive for porch or sun parlor. It has a rustic effect and the appearance of being hewn out of a tree.

WESTERN STONEWARE COMPANY, MONMOUTH, ILLINOIS

COMBINATION EGYPTIAN
PEDESTAL AND JARDINIERE



Jardiniere No. 306
—8" diameter

Pedestal No. 307

THIS combination adds cheer and life to display windows and show rooms.

BIRD BATH



No. 365—27" high

THIS BIRD BATH is very attractively designed for use where a distinctive and artistic outdoor decoration is required. Modeling is in dull finish tawny brown with contrasting darker background, and inside of the bowl a bright finish dark green.

WESTERN STONEWARE COMPANY, MONMOUTH, ILLINOIS