



**2019
Sailing Instructions
Revision 4**

for

Fleet Course Racing

**OD Series 1 – 4
Club Series 1 – 4
Frostbite Series**

WYC 2019 Sailing Instructions - Course Racing

OWNER'S RESPONSIBILITY: The safety of a boat and her crew is the sole responsibility of the owner(s) and/or skipper who must ensure that the boat is fully sound, thoroughly seaworthy, manned by experienced crew and adequately insured. He/she must be satisfied as to the soundness of the hull, spars, rigging, sails and gear. He/she must ensure that all safety equipment, which now includes a VHF radio, is properly maintained and stowed and that the crew is familiar with its location and use. Skippers must also be concerned with the safety of other boats and crews around them, maintain an adequate look-out and be aware that a bow mounted anchor might exacerbate injury to person or property in the event of a collision.

It is the sole responsibility of the skipper of each boat to decide whether or not to start, continue in or retire from a race. By starting any particular race the skipper accepts to abide by these instructions. Read RRS Part 1!

SAILING INSTRUCTIONS:

1. RULES

- 1.1. Races will be governed by The Racing Rules of Sailing (RRS) 2017-2020, and the prescriptions of Sail Canada and these Sailing Instructions.
- 1.2. PHRF Lake Ontario (PHRF-LO) rules will apply for handicap racing.
- 1.3. The applicable Class Rules will apply for one-design (OD) racing.
- 1.4. In cases of conflict between the Sailing Instructions and any Class Rules, these Instructions shall govern.
- 1.5. Any class with 5 or more boats registered will be assigned a Division # and given a separate start in the OD Series.
- 1.6. Changes to boat or sails shall be referred to the Fleet Captain and/or club handicapper.
- 1.7. All boats intending to race must be pre-registered to acknowledge acceptance of these Sailing Instructions and to declare a deputy skipper, if any. Any boat that starts a Fleet Course Race without pre-registering will be deemed to have read and accepted these Sailing Instructions, and will be invoiced for the annual registration fee and the PHRF Lake Ontario certificate fee.

2. NOTICES TO COMPETITORS

Notices to competitors will be posted on the official notice board located in the ground floor hallway of the WYC club house and posted on the WYC Fleet Committee website at <http://www.wycfleet.com/2018-race-documents>.

3. CHANGES TO SAILING INSTRUCTIONS

Any change to the sailing instructions will be posted by 0900 on the day it will take effect, except that any change to the schedule of races will be posted by 1800 three days prior to it taking effect.

4. SIGNALS MADE ASHORE

- 4.1. Signals made ashore will be displayed on the flagpole located on the lawn west of the clubhouse.
- 4.2. When flag AP is displayed ashore, "one minute" is replaced by "not less than 45 minutes".

5. SCHEDULE OF RACES

- 5.1. The Club Series 1 to 4 will take place primarily on Wednesday evenings from the middle of May until early September. There is one race scheduled per evening. The last Club Series race of Series 1 and the first of Series two will form part of the Spring Regatta, among with a spare. Two races of Series 4 and a spare will form the Fall Regatta. Specific dates are listed in the schedule

WYC 2019 Sailing Instructions - Course Racing

attached as Annex A of these instructions. The scheduled time of the warning signal for the first start on Wednesday nights is 1830.

- 5.2. The OD Series 1 to 4 will take place on Tuesday evenings from the middle of May until the middle of September. There are two races scheduled per evening. Specific dates are listed in the schedule attached as Annex A of these instructions. The scheduled time of the warning signal for the first start on Tuesday nights is 1830 for Series 1-3.
 - 5.3. The Frostbite Series for handicap racing will take place on Wednesday evenings beginning in mid-September. Specific dates are listed in the schedule attached as Annex A of these instructions. The scheduled time of the warning signal for the first start on Wednesday nights is 1800.
 - 5.4. A Competitors Meeting is scheduled for Wednesday, April 24 at 1900 in the Compass Rose Lounge.
 - 5.5. A race will not be started in sustained winds less than 3 knots nor in conditions deemed to be unsafe or unfit for Race Committee.
6. DIVISION SPLITS, ORDER OF START, AND CLASS FLAGS
- 6.1. For results to be recorded and reported, boats must be registered and comply with either Clause 6.1.1 or Clause 6.1.2 as applicable.
 - 6.1.1. Hold a current PHRF certificate for handicap racing.
 - 6.1.2. Hold a class measurement certificate for one-design racing. Boats without a measurement certificate may enter if she complies with all other class rules.
 - 6.2. For Tuesday night racing, boats will be split by class into divisions as designated in the table below.

OD Series 1 - 4			
CLASS	CLASS FLAG	DIVISION #	START #
Shark	Shark Insignia Flag	Division 5	Start 1 & 2

- 6.3. For Wednesday night racing, boats will be split into PHRF spinnaker, PHRF JAM (Jib & Main) and Shark divisions as designated in the table below.

Club Series 1 - 4			
CLASS	CLASS FLAG	DIVISION #	START #
PHRF Small JAM	White	Division 1	Start 3
PHRF Large JAM	Gold	Division 2	Start 1
PHRF Small Spinnaker	Green	Division 3	Start 3
PHRF Large Spinnaker	Light Blue	Division 4	Start 1
Shark	Shark Insignia Flag	Division 5	Start 2

WYC 2019 Sailing Instructions - Course Racing

Frostbite Series			
CLASS	CLASS FLAG	DIVISION #	START #
PHRF JAM	White or Gold Flag	Division 1	Start 1
PHRF Spinnaker	Green or Light Blue Flag	Division 2	Start 1

- 6.4. Notice of the division splits will be posted in accordance with Clause 6.3.
- 6.5. The Fleet Captain reserves the right to organize divisions and start order at his/her discretion so as to provide for the best possible racing.
- 6.6. Class flag must be flown at the stern, except for Sharks.
- 6.7. The Class flags will be hoisted as the Warning signal in the start sequence, in accordance with RRS 26.

7. RACING AREAS

- 7.1. Alpha Course is a circle of 8 fixed marks with a diameter of 1 nm centred on fixed mark #9 approximately 1.4 nm on a compass bearing of approximately 210 degrees (right) from the Whitby Harbour East Pier Head light (See Attachment A). The start line incorporates fixed mark #9.
- 7.2. Bravo Course is in the same area as the Alpha Course but incorporates both fixed and set marks in a Windward/Leeward course configuration. The leeward mark will be one of the 9 fixed marks on the Alpha Course and will be determined by the Race Committee no later than 15 minutes before the first warning. Depending on course configuration (See Attachment B), the windward mark will either be set between 0.4 and 1.5 nm to windward or be a fixed mark on the perimeter of the circle. The start line is below the leeward mark.

8. THE COURSES

- 8.1. The Club Series will be sailed on the Alpha Course and OD Series will be sailed on the Bravo Course as designated in the Schedule of Races, Annex A.
- 8.2. See Attachment A – Alpha Course and Attachment B – Bravo Course for courses, order in which marks are to be passed, and the side on which each mark is to be left.

9. MARKS

- 9.1. See Attachments A and B for a description of race marks.

10. AREAS THAT ARE OBSTRUCTIONS

- 10.1. Unless a boat is starting, finishing or rounding a mark as a mark of the course, all of the following apply.
- 10.1.1. If a race committee boat is anchored near a mark, the triangle formed by the mark, the bow of signal boat and the stern of the signal boat is designated an *Obstruction*.
- 10.1.2. If a drop mark is anchored near a mark, the line between the mark and a drop mark (see 11.9), is designated an *Obstruction*.
- 10.1.3. Boats that sail through the *Obstruction* will take a Two-Turns Penalty in accordance with RRS 44.2.

11. THE START

- 11.1. Before starting its first race of each day, a registered boat intending to race shall check-in with the Race Committee by sailing past the stern of the signal boat with sail number visible and

WYC 2019 Sailing Instructions - Course Racing

receive acknowledgement. The race committee will not accept reports of intent to start via VHF radio. The Race Committee may protest boats failing to report.

- 11.2. The starting line will be between the halyard or staff displaying an orange flag on the signal boat and the start mark as defined in Attachments A and B.
- 11.3. The course configuration, direction and length will be displayed on the signal boat as defined in Attachments A and B.
- 11.4. Boats whose warning signal has not been made shall avoid the starting area during the starting sequence for other races. The starting area extends one-quarter the length of the starting line ahead of and behind the starting line, and one-quarter the length of the starting line past either end of the starting line.
- 11.5. A boat starting later than five (5) minutes after her starting signal will be scored Did Not Start (DNS) without a hearing..
- 11.6. The signal boat may leave the starting area 5 minutes after the last start.
- 11.7. The Race Committee may announce the sail number or boat name of each premature starter on the applicable VHF channel. Failure to make an announcement or the order in which boats are announced shall not be grounds for redress. This changes Rule 62.1 (a).
- 11.8. A start receiving a General Recall will be restarted after the last scheduled start. This changes RRS Rule 29.2.
- 11.9. In the event that a signal boat is not available, a yellow drop mark will be placed to form a start/finish line with the start mark and the race will be run using the VHF radio.
- 11.10. The warning signal for each succeeding start shall be at least 1 minute after the starting signal of the preceding start.

12. CHANGE OF THE NEXT LEG OF THE COURSE

- 12.1. See Attachments A and B.

13. THE FINISH

- 13.1. Boats will finish between the staff or halyard carrying a blue flag on the race committee vessel and the finishing mark as shown in the course diagrams in Attachments A and B.
- 13.2. If a race committee vessel is not present, boats will record the GPS time of day of their finish as their primary winches pass within 2 boat lengths and to starboard of the finish mark. Each boat must then email their finish time (UTC-4hrs) to fleet@wyc.ca before 10 pm that day or be scored DNF.

14. PENALTY SYSTEM

- 14.1. The Scoring Penalty, RRS 44.3 does not apply.

15. TIME LIMITS

- 15.1. All boats in compliance with Clause 6.1 shall be scored unless the race is abandoned.
- 15.2. A race shall be abandoned for a Division if no boat in the Division has rounded the first mark within 30 minutes of their start or no boat in the Division has finished within 90 minutes of their start.
- 15.3. The signal boat may retire 2 hrs after the first warning and remaining boats may take their own times in accordance with 13.2.

WYC 2019 Sailing Instructions - Course Racing

16. PROTESTS AND REQUEST FOR REDRESS

- 16.1. To minimize protests, a boat that may have broken one or more rules of Part 2 in an incident is encouraged to take penalty turns in accordance with RRS 44.1 and RRS 44.2.
- 16.2. Protests forms are available on the Notice Board.
- 16.3. Protests and requests for redress must be delivered to the Chief Judge, Fleet Captain or Principal Race Officer within one hour of the signal boat's return to the dock.
- 16.4. Protests alleging a breach of a class or handicap rule must be accompanied by an official copy of the applicable class or handicap rules. This adds to rule 61.2.
- 16.5. Protests may be subject to a PRE-HEARING. Protest Committee/Jury hearings may be held once per month at a time and date posted on the Notice Board at least 1 week prior. This changes RRS Rule 61.

17. SCORING

- 17.1. The Low Point System, RRS A4 is modified as follows:
 - 17.1.1. A boat that did not start (DNS) shall be scored the number of starters plus 1.
 - 17.1.2. A boat that did not finish (DNF) or retired shall be scored the number of finishers plus 1.
 - 17.1.3. A boat that is disqualified (DSQ) shall be scored the number of boats registered plus 1.
 - 17.1.4. All starters in an abandoned race will be scored DNF.
- 17.2. A Club Series will be scored with one discard per five races. Boats must race at least once in a series to be included.
- 17.3. A OD Series will be scored with two discards per eight races. Boats must race at least once in a series to be included.
- 17.4. Club Series overall division results will be scored as the best 16 races out of all the possible Club Series races plus the Centennial & Stonehaven distance races. Boats not included in a series will be scored DNS.
- 17.5. OD Series overall class results will be scored as the best 80 per cent of all the OD Series races sailed.
- 17.6. There are two spare races, run as part of the Spring and Fall Regattas.

18. SAFETY REGULATIONS

Once a boat has fulfilled her check-in requirements, if she withdraws from a race or if she no longer intends to participate in racing, she shall: a) keep clear of other competitors and b) notify the Race Committee and receive their acknowledgement either orally or on the applicable VHF channel. The penalty for a breach of this instruction may be less than disqualification if the protest committee so decides.

19. RADIO COMMUNICATIONS

- 19.1 The RC will use VHF Channel 72 for the conduct of the races. Channel 71 may be used as a backup.
- 19.2 Race Committee broadcasts regarding its intentions, the course to be sailed, start times, course changes, etc. are a courtesy only. Failure of the Race Committee to make a broadcast, the timing of a broadcast, or the failure of a boat to hear a broadcast shall not be grounds for redress. This changes rule 62.1 (a).

WYC 2019 Sailing Instructions - Course Racing

20. PRIZES

20.1 Prizes will be awarded to the three top finishers in each Division in each Series at the Awards Night on November 17th, 2019.

20.2 Trophies will be awarded to overall winners.

21. DISCLAIMER OF LIABILITY

Competitors participate in the racing entirely at their own risk. See RRS 4, Decision to Race and Preface to these Instructions. The Whitby Yacht Club will not accept any liability for material damage or personal injury or death sustained in conjunction with or prior to, during, or after the races.

22. INSURANCE

Each participating boat shall be insured with valid third-party liability insurance with a minimum cover of \$2,000,000 per incident or the equivalent.

23. CODE OF CONDUCT

Ontario Sailing Association CODE OF CONDUCT will apply in addition to the CODE OF CONDUCT for guests and members of the Whitby Yacht Club.

WYC 2019 Sailing Instructions - Course Racing

Annex A

Schedule

Date	DoW	Event	Course/Comments
April 14	Sun	Shark Measurement Day	
April 17	Wed	Competitor's (Skipper's) Meeting Compass Rose Lounge	
May 5	Sun	Shark West Crane (Dry Sail Crane) Certification	
May 14	Tue	WYC OD Series 1, Race 1-2	Bravo Course
May 15	Wed	WYC Club Series 1, Race 1	Alpha Course
May 21	Tue	WYC OD Series 1, Race 3-4	Bravo Course
May 22	Wed	WYC Club Series 1, Race 2	Alpha Course
May 28	Tue	WYC OD Series 1, Race 5-6	Bravo Course
May 29	Wed	WYC Club Series 1, Race 3	Alpha Course
June 4	Tue	WYC OD Series 1, Race 7-8	Bravo Course
June 5	Wed	WYC Club Series 1, Race 4	Alpha Course
June 8	Sat	WYC Spring Regatta, Course Racing S1R5/S2R1/Spare	Alpha Course
June 9	Sun	WYC Centennial Bowl, Medium Distance	
June 11	Tue	WYC OD Series 1, Race 9-10	Bravo Course
June 12	Wed	WYC Club Series 2, Race 2	Alpha Course
June 18	Tue	WYC OD Series 1, Race 11-12	Bravo Course
June 19	Wed	WYC Club Series 2, Race 3	Alpha Course
June 25	Tue	WYC OD Series 2, Race 1-2	Bravo Course
June 26	Wed	WYC Club Series 2, Race 4	Alpha Course
July 2	Tue	WYC OD Series 2, Race 3-4	Bravo Course
July 3	Wed	WYC Club Series 2, Race 5	Alpha Course
July 9	Tue	WYC OD Series 2, Race 5-6	Bravo Course
July 10	Wed	WYC Club Series 3, Race 1	Alpha Course
July 16	Tue	WYC OD Series 2, Race 7-8	Bravo Course
July 17	Wed	WYC Club Series 3, Race 2	Alpha Course
July 20	Sat	WYC Mayors Cup (Pursuit Race)	
July 23	Tue	WYC OD Series 2, Race 9-10	Bravo Course
July 24	Wed	WYC Club Series 3, Race 3	Alpha Course
July 30	Tue	WYC OD Series 2, Race 11-12	Bravo Course
July 31	Wed	WYC Club Series 3, Race 4	Alpha Course
August 6	Tue	WYC OD Series 3, Race 1-2	Bravo Course
August 7	Wed	WYC Club Series 3, Race 5	Alpha Course
August 13	Tue	WYC OD Series 3, Race 3-4	Bravo Course
August 14	Wed	WYC Club Series 4, Race 1	Alpha Course
August 17	Sat	WYC Jack & Jill Race - Women's Race (Medium Distance)	
August 20	Tue	WYC OD Series 3, Race 5-6	Bravo Course
August 21	Wed	WYC Club Series 4, Race 2	Alpha Course
August 24	Sat	WYC Fall Regatta, Club Series S4R3/S4R4/Spare	Alpha Course
August 25	Sun	WYC Stonehaven Cup, Medium Distance Race	
August 27	Tue	WYC OD Series 3, Race 7-8	Bravo Course
August 28	Wed	WYC Club Series 4, Race 5	Alpha Course
September 3	Tue	WYC OD Series 3, Race 9-10	Bravo Course
September 4	Wed	WYC Frostbite Race 1	Alpha Course
September 10	Tue	WYC OD Series 3, Race 11-12	Bravo Course
September 11	Wed	WYC Frostbite Race 2	Alpha Course
September 18	Wed	WYC Frostbite Race 3	Alpha Course
September 25	Wed	WYC Frostbite Race 4	Alpha Course
October 2	Wed	WYC Frostbite Race 5	Alpha Course
November 16	Sat	WYC Awards Night	

Attachment A – ALPHA COURSE

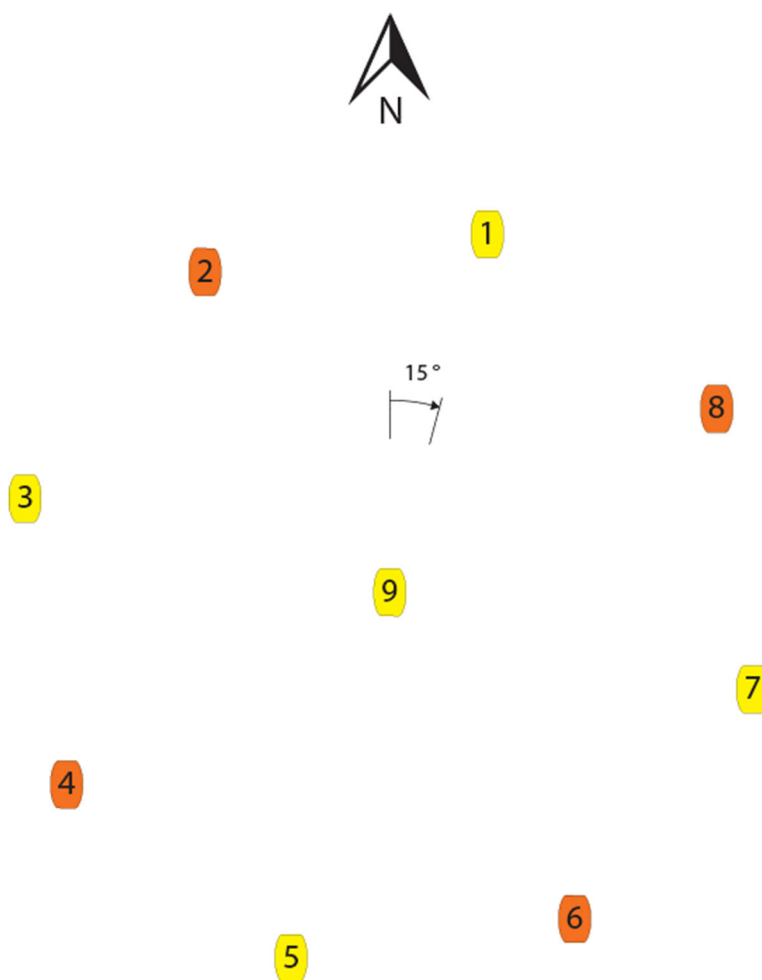
A1. RACING AREA

- A1.1. Alpha Course is a pattern of 8 fixed marks radiating from a centre fixed mark located approximately 1.4 nm on a compass bearing of approximately 210 degrees (right) from the Whitby Harbour East Pier Head light.

A2. MARKS

- A2.1. The fixed marks are barrels approximately 4 feet in height with black mark numbers on three sides. The odd numbered marks are yellow and the even numbered marks are orange.
- A2.2. If a mark of the course is missing or out of place, the race committee will replace it before the first warning gun with an inflated tetrahedron approximately 5.5 feet in height at the location specified above. The colour will be the same as the mark being replaced. No mark number will be visible.
- A2.3. The layout, location and relative position of the fixed marks are as follows:

ALPHA COURSE MARK LAYOUT



Approximate diameter 1.0 nm

WYC 2019 Sailing Instructions - Course Racing

ALPHA COURSE MARK CO-ORDINATES

Mark 1	N 43° 50.206'	W 78° 56.210'
Mark 2	N 43° 50.086'	W 78° 56.713'
Mark 3	N 43° 49.744'	W 78° 56.951'
Mark 4	N 43° 49.381'	W 78° 56.784'
Mark 5	N 43° 49.210'	W 78° 56.310'
Mark 6	N 43° 49.330'	W 78° 55.807'
Mark 7	N 43° 49.672'	W 78° 55.569'
Mark 8	N 43° 50.035'	W 78° 55.736'
Mark 9	N 43° 49.708'	W 78° 56.260'

ALPHA COURSE BEARINGS (MAGNETIC)

Mark	1	2	3	4	5	6	7	8	9
1		263	240	218	195	173	150	128	195
2	082		217	195	172	150	127	105	150
3	060	037		172	150	127	105	082	105
4	037	015	352		127	105	082	060	060
5	015	352	330	307		082	060	037	015
6	353	330	308	285	263		038	015	330
7	330	308	285	263	240	218		353	285
8	308	285	263	240	218	195	173		240
9	015	330	285	240	195	150	105	060	

A3. THE COURSES

- A3.1. Course lengths on the Alpha Course are designated as Short, Medium or Long (S, M or L).
- A3.2. The race committee will display the course number using placards on a staff. The course number is comprised of the windward mark number and a course length letter. For example, a course number of 3L means that fixed mark #3 is the windward mark and the long course for

WYC 2019 Sailing Instructions - Course Racing

the division will be sailed. In the event that different divisions are sailing different courses, the division flag will be displayed above each course number.

A3.3. Course diagrams for each Division are below.

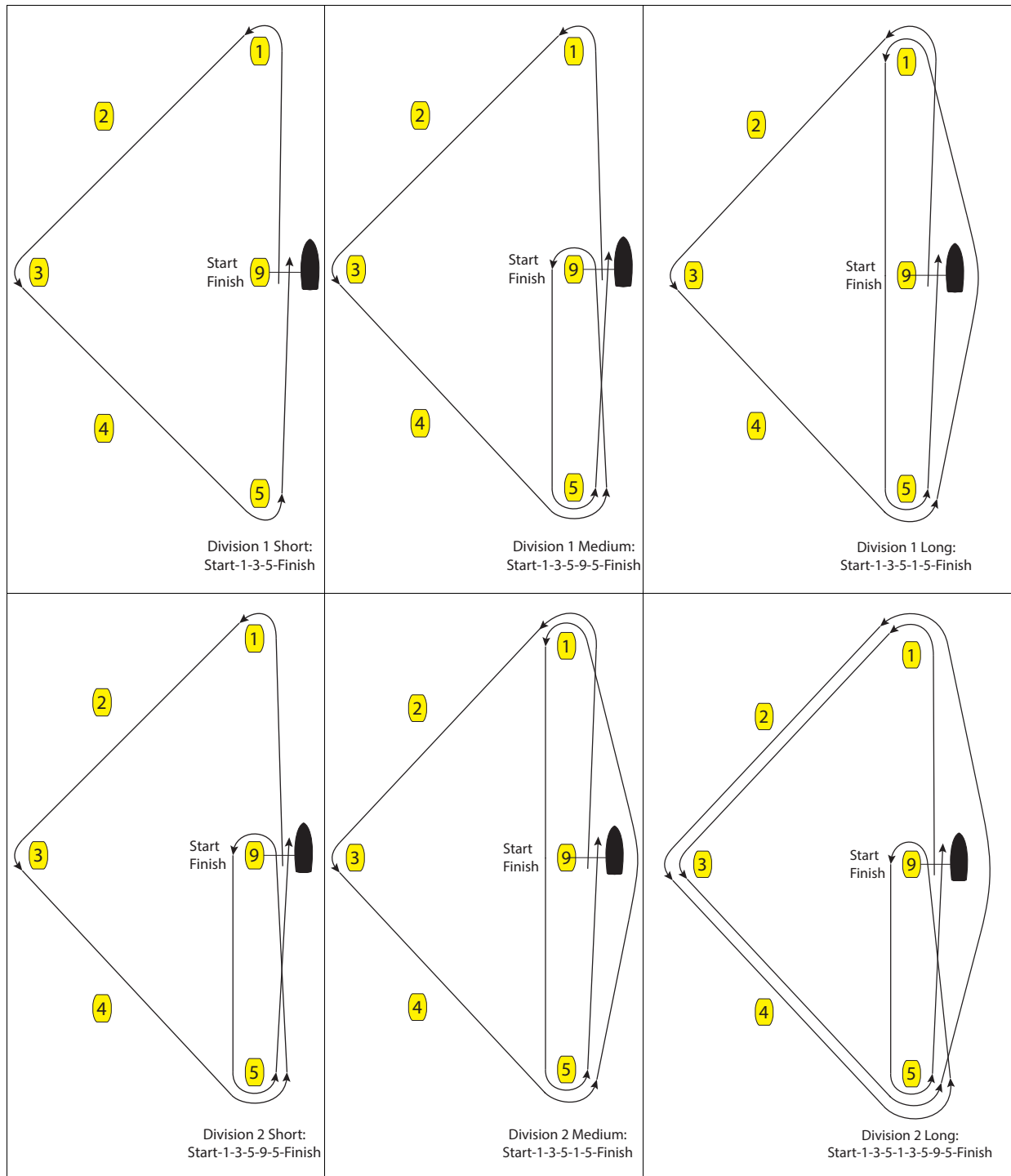
A3.4. For the Frostbite Series, the course will be the Division 2 Short course for all competitors and only the windward mark number will be displayed.

A4. CHANGE OF THE NEXT LEG OF THE COURSE

A4.1. The course may only be shortened and done so at a mark of the course.

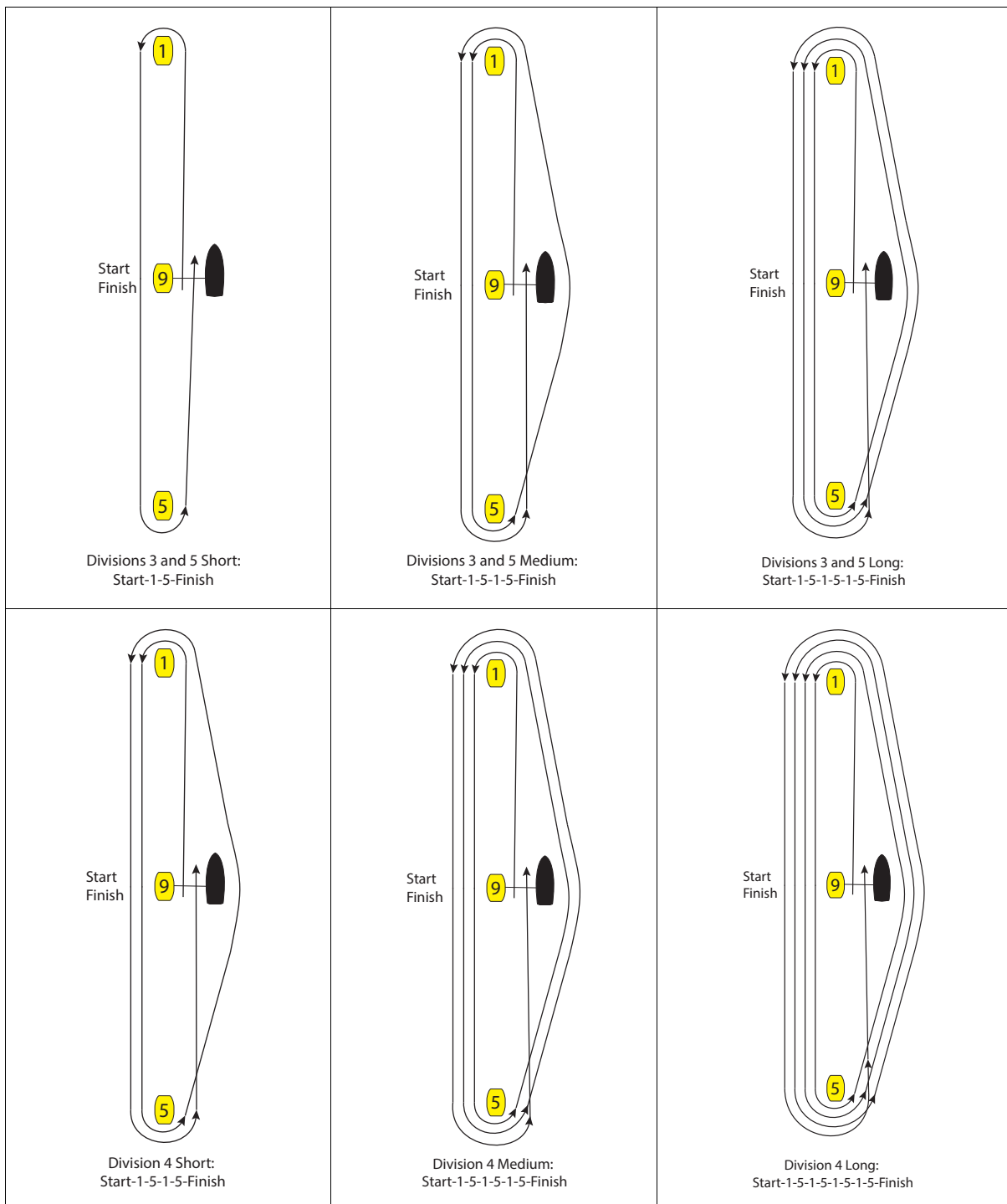
WYC 2019 Sailing Instructions - Course Racing

ALPHA COURSE DIAGRAMS Jib and Main Divisions



WYC 2019 Sailing Instructions - Course Racing

ALPHA COURSE DIAGRAMS Spinnaker Divisions



Attachment B – BRAVO COURSE

B1. RACING AREA

- B1.1. The race area is a circle with a diameter of 3 nm centered on Alpha Course fixed mark #9, which is approximately 1.4 nm on a compass bearing of 210 degrees (right) from the Whitby Harbour East Pier Head light.

B2. COURSES

- B2.1. The course will be a windward-leeward configuration as shown below. A signal corresponding to the configuration will be displayed on a staff.
- B2.2. All races will be 2 loops.
- B2.3. For Course SA, the race committee will display the course bearing and length of the windward leg using display boards.
- B2.4. For Course SB, the race committee will display, on a staff, the number of the fixed mark on Alpha Course that will be used as Mark 1, and the course bearing and length of the windward leg using display boards.
- B2.5. For Course FA, the race committee will display, on a staff, the number of the fixed mark on Alpha Course that will be used as Mark 1.
- B2.6. The length of the windward leg will be set such that the lead boat will finish in approximately 30 minutes.
- B2.7. Two races will be run each night at the discretion of the Race Committee.

B3. MARKS

B3.1. Course SA

- B3.1.1. The Start / Finish mark and Mark 2 will be one of the fixed marks on Alpha Course.
- B3.1.2. Mark 1 will be a yellow tetrahedron. The offset Mark 1a will be a red ball approximately 34" in diameter. The change mark will be an orange tetrahedron.

B3.2. Course SB

- B3.2.1. The Start / Finish mark and Mark 2 will be a red ball approximately 34" in diameter.
- B3.2.2. Mark 1 will be any one the eight fixed marks on the perimeter of Alpha Course. The change mark will be any one the remaining perimeter fixed marks..

B3.3. Course FA

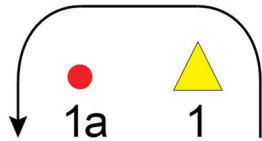
- B3.3.1. The Start / Finish mark and Mark 2 will be Alpha Course fixed mark #9.
- B3.3.2. Mark 1 will be any one the eight fixed marks on the perimeter of Alpha Course. The change mark will be any one the remaining perimeter fixed marks.

B4. CHANGE OF THE NEXT LEG OF THE COURSE

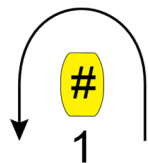
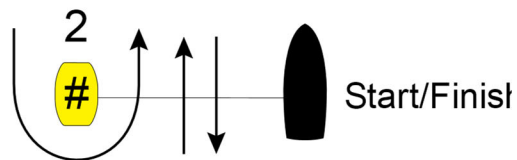
- B4.1. For Course SA, the race committee will lay a new mark and signal the relative direction change and/or relative length change in accordance with RRS 33. If the windward marks (1 and 1a) are changed they will be replaced by a single mark. The race committee will remove the original mark(s) as soon as practicable. When, in a subsequent change of course, a new mark is replaced, it will be replaced with an original mark.
- B4.2. For Course SB and FA, the race committee will signal the relative direction change and new fixed mark #. The original mark will not be removed.

WYC 2019 Sailing Instructions - Course Racing

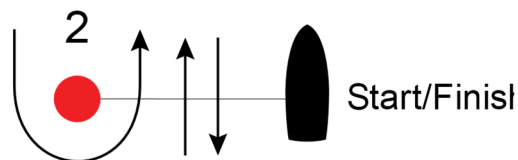
BRAVO COURSE DIAGRAMS



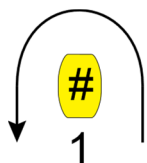
Course SA – Windward/Leeward, Mark 1 Set	
Signal	Mark Rounding Order
SA	Start - 1 - 1a - 2 - 1- 1a - Finish



Course SB – Windward/Leeward, Mark 1 Fixed	
Signal	Mark Rounding Order
SB	Start - 1 - 2 – 1 - Finish



WYC 2019 Sailing Instructions - Course Racing



Course FA – Windward/Leeward, Marks 1 Fixed	
<i>Signal</i>	<i>Mark Rounding Order</i>
FA	Start - 1 - 2 – 1 - Finish

