

Selectors

04



HE

164



5HE 7TAKT

168



5HE 7TAKT DUO

170



HT

172



HT 4 BLOCK

174



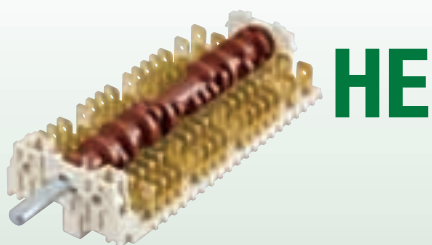
CH

175



2CH WITH ENCODER

176



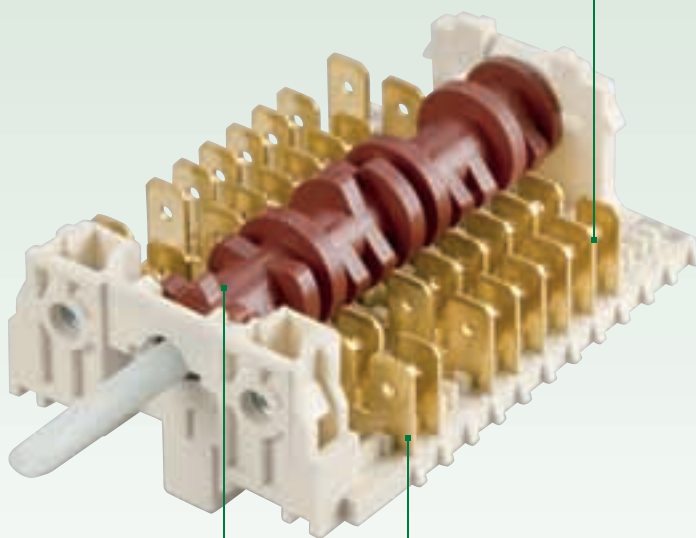
TYPICAL APPLICATIONS	Function selector switch
WIRING DIAGRAMAS	2 - 14 positions Rast 5 connectors
GWFI	850 °C
GWIT	750 °C

Rotary switches with a wide range of configurations. 6 types of housing available, different for the maximum number of contacts. HE series is automatically assembled in a great variety of configurations.

- Function selector switch
- Child lock - push to turn feature on demand
- Coupling with encoder available
- Flexibility of wiring diagrams
- Different "click" or frictional feeling
- Metal or plastic shafts with different lengths: 12,5 - 46 mm (standard shafts protude: 23 mm)

EXAMPLE OF 11HE WITH 8 CONTACTS

Easy wiring with multiple plug (Rast 5) or single terminals 6,3 mm



2 - 14 positions

Standard double contact

Rating

16 A / 250 VAC - 10E3

12 A / 400 VAC - 30E3

0,25 A / 250 VAC - 30E3

T150 °C

16 A / 250 VAC

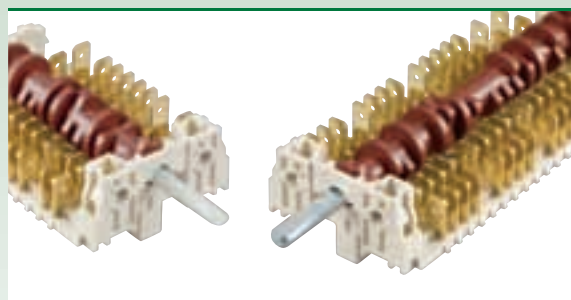
T120 °C

According to
EN61058-1 standard



TYPICAL TERMINALS

- Single terminals
- Double terminals
- Chopped
 - left
 - center
 - right



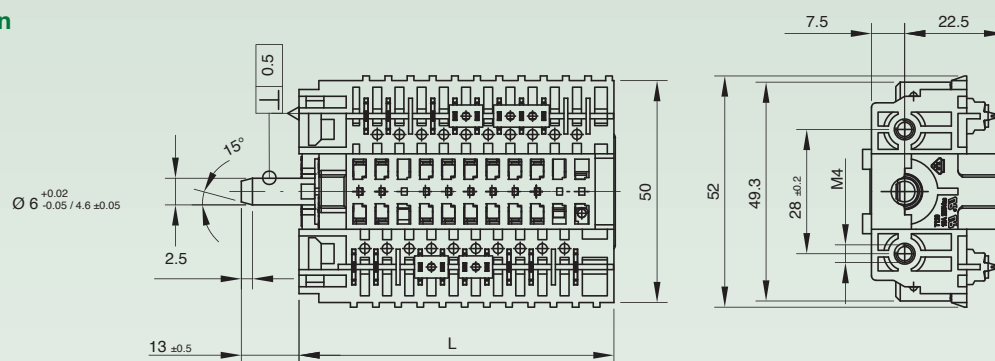
TYPES OF SHAFT

Plastic

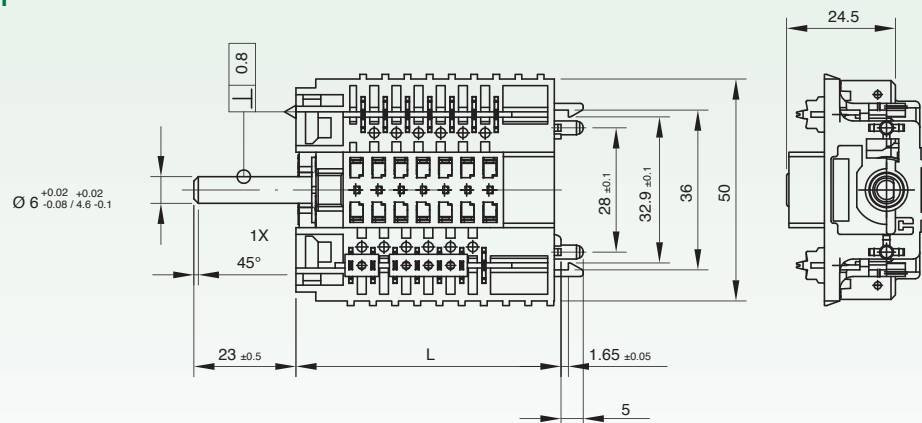
Metal

DIMENSIONS

Standard version



Thermostat version



TECHNICAL FEATURES

Version	No. contacts	Length	
		L	L thermostat version
3HE	up to 3	30	38
5HE	up to 5	40	48
7HE	up to 7	50	58
11HE	up to 11	70	78
15HE	up to 15	90	98
19HE	up to 19	110	118

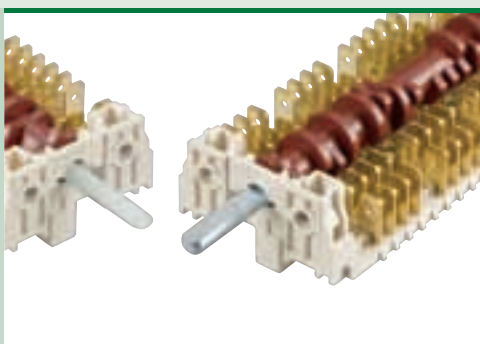
OPTIONS

Higher number of contacts, multiple versions, possibility to use accessories are the main features of HE series.



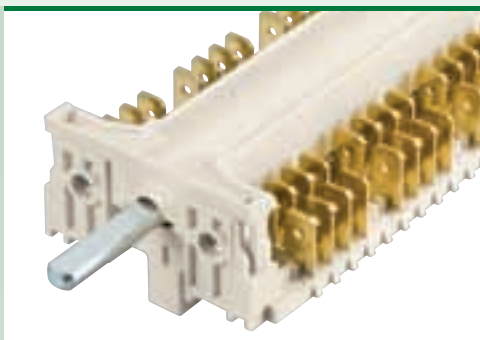
Body with accessory holder

- Possibility to use in conjunction with a capillary thermostat or an encoder



Shaft

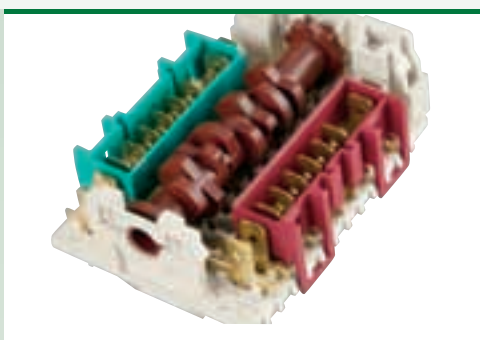
- Metal or plastic shaft with length on demand (12.5 - 46 mm)
- Standard shaft length: 23.5 mm



Cam cover

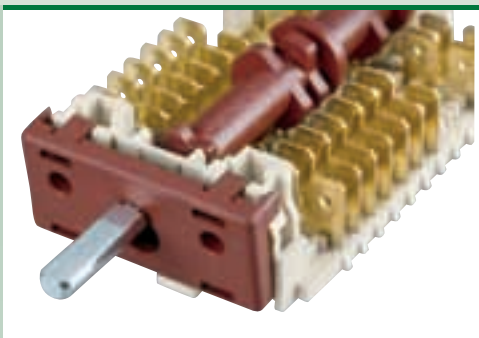
- Cam cover protects cam and contacts from dirt and waste of cooking.

Note: cam cover is available for 11 and 19 versions.



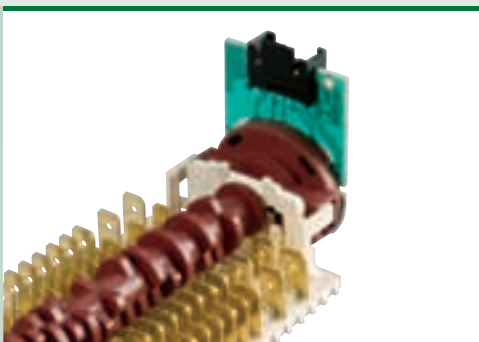
Terminal housing

- Various dimensions of terminal housing: for 2 - 4 - 6 connections.
- Terminal housing available only for single terminal version.



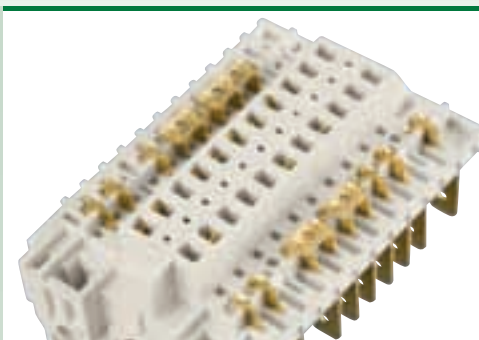
Child lock - push to turn feature

- Push to turn safety feature available.



Coupling with encoder

- HE series can be coupled to an electromechanical to control electrical and power signals.



Bridges

- The use of bridges between contacts increases range of combinations.
- For every line the number of bridges can vary between 0 up to 5.
- It can be joined up to 7 contacts.



5HE 7TAKT



TYPICAL APPLICATIONS Hobs control

WIRING DIAGRAMAS 7 positions

GWFI 850 °C

GWIT 750 °C

Rotary switches with different mounting solution available, 7 positions, with electric rating up to 12A. Ideal for hobs control, with a terminal housing conjuncted to the body.

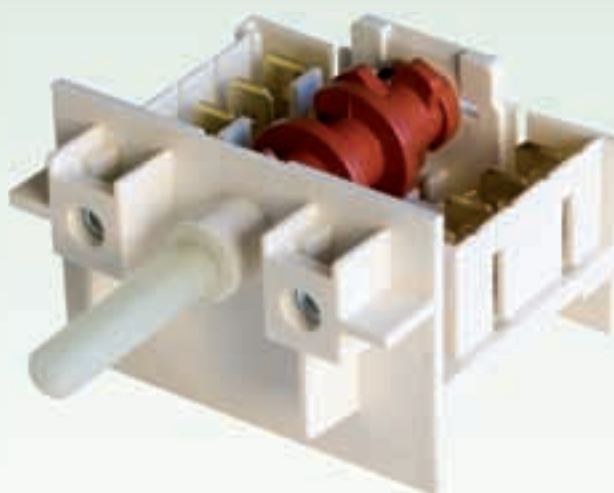
- Standard connecting with single terminals 6,3 mm
- Different mounting solutions available:
snap-in, nuts or screw fixing
- 30.000 cycles
- Pastic shafts with different lengths (16 - 31 mm)

Rating

12 A / 400 VAC 30E3
T150 °C

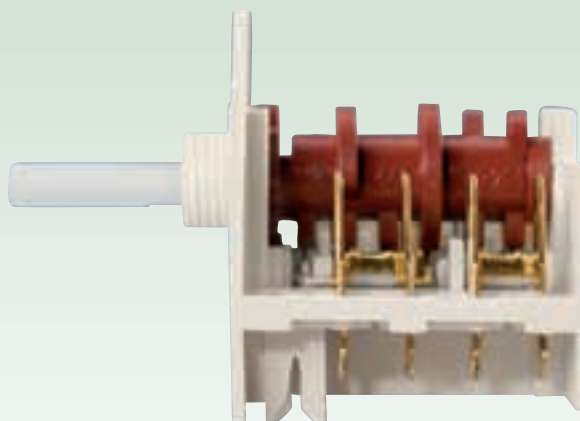
16 A / 250 VAC
T120 °C

According to EN61058-1
standard

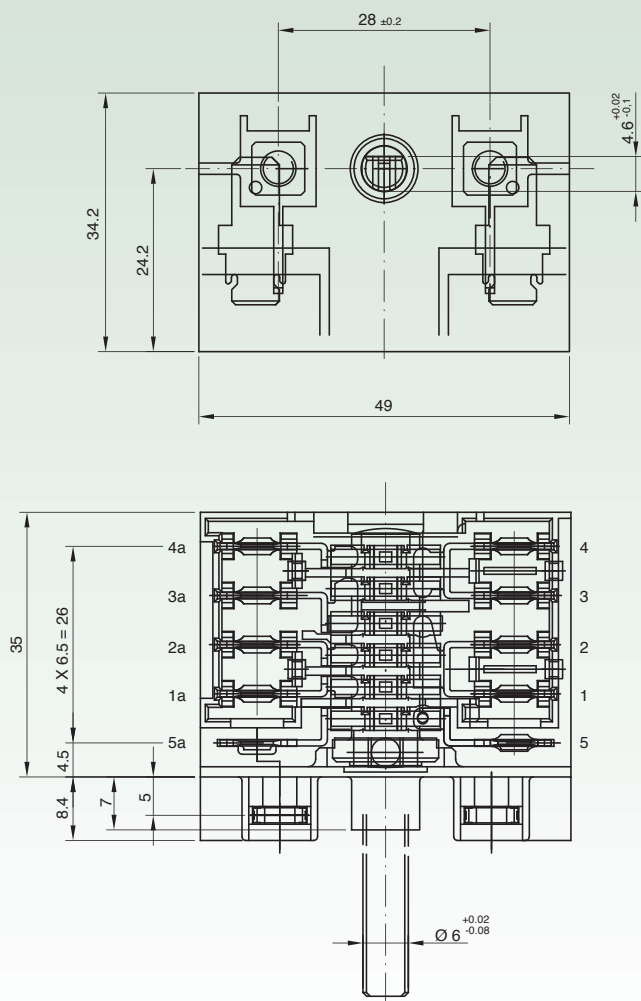


TECHNICAL FEATURES

Rast 6,5 multiple connection.



DIMENSIONS



CONTACT SEQUENCE

Pos.	Ang.	P3	P1		P2	
		5a	1a-2a		3a-4a	
		5	1	1	3-3	4
		5	2	2	3-3	4
0	0°					
1	51,4°	■	■	■	■	■
2	102,8°	■		■	■	■
3	154,2°	■		■	■	
4	205,6°	■		■		■
5	257,0°	■			■	■
6	308,4°	■	■		■	

SOLUTIONS

Nut Fixing



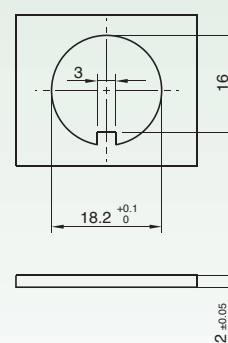
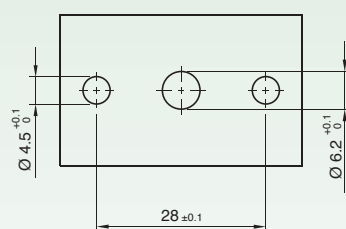
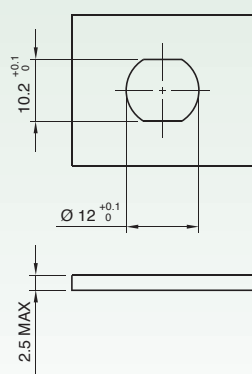
Screw fixing

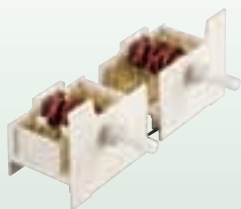


Snap-in fixing



CUT OUT





5HE 7TAKT DUO

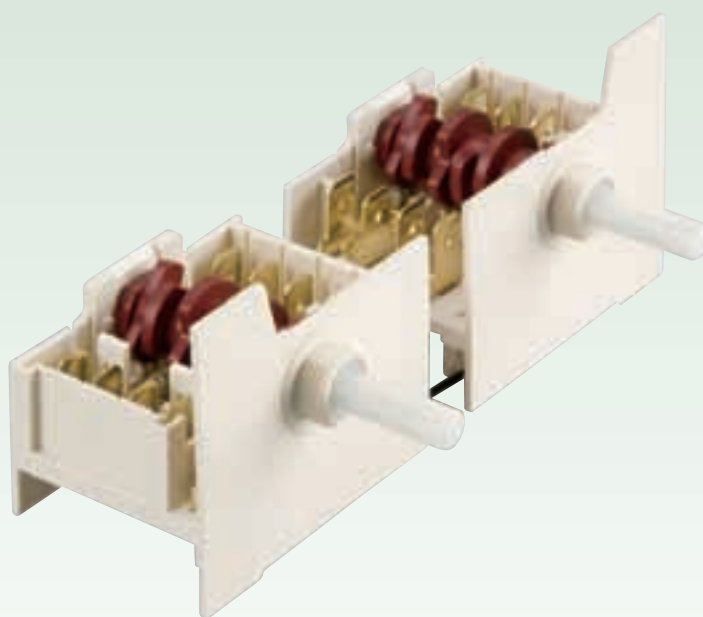


TYPICAL APPLICATIONS	Hobs control
WIRING DIAGRAMAS	7 positions
GWFI	850 °C
GWFI	750 °C

This series is composed of two 5HE 7TAKT rotary selectors, 3 different distances of axis available (55, 60 and 65 mm). Each selector has 7 positions, electric rating up to 12A and different mounting solutions. Duo block permits to make the wiring easier.

- Standard connecting with single terminals 6,3 mm
- Different mounting solutions available: snap-in, nuts or central mounting
- Metal or plastic shafts with different lengths
- Rast 6,5 multiple connection available
- Metal or plastic shafts with different lengths:
(16 - 31 mm)

EXAMPLE OF 5HE 7TAKT DUO WITH NUTS



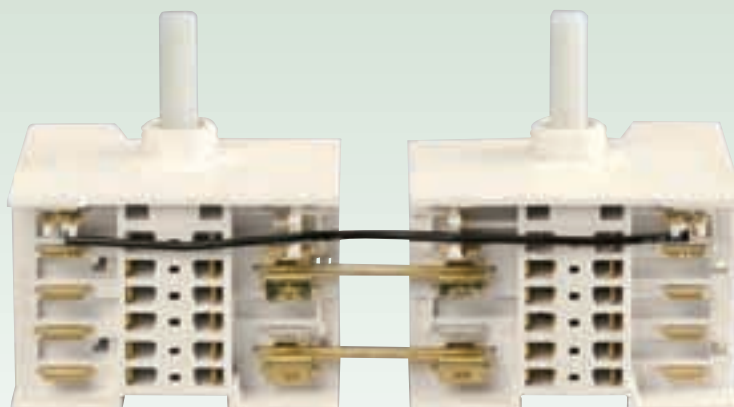
Rating
12 A / 400 VAC 30E3
T150 °C

16 A / 250 VAC
T120 °C

According to EN61058-1
standard

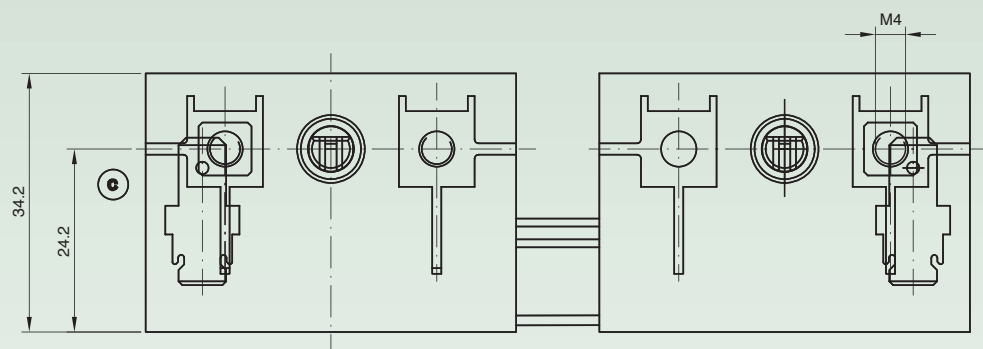
TECHNICAL FEATURES

Various distances of axis available:
55, 60 and 65 mm.

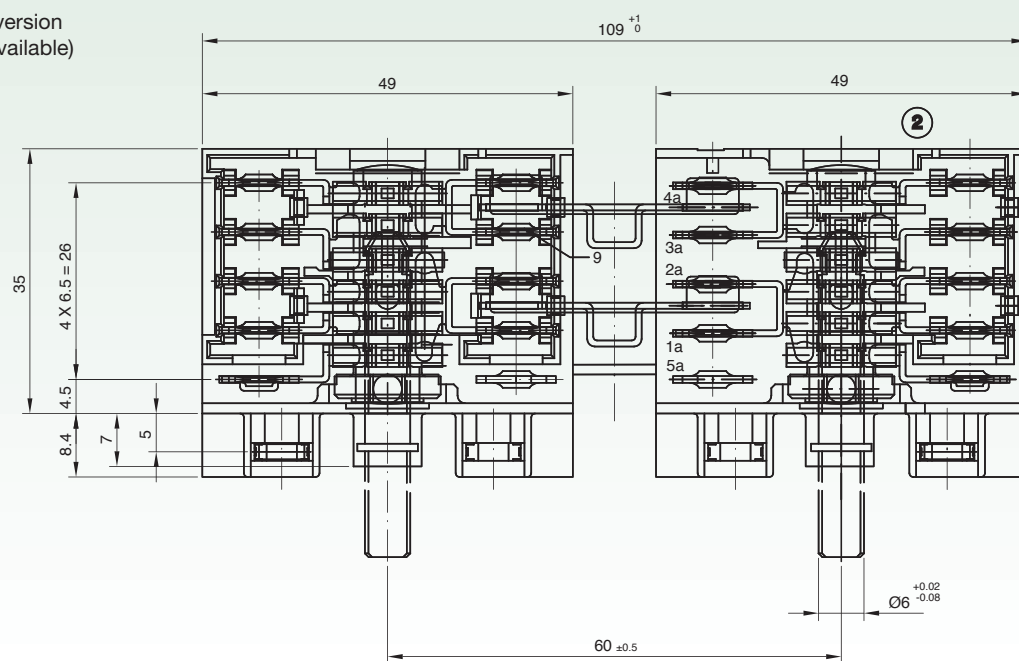


DIMENSIONS

Screw fixing version



60 mm interaxis version
(55 and 65 mm available)



CONTACT SEQUENCE

		P3	P1		P2	
	Ang.	5a	1a-2a	3a-4a		
Pos.		S	1	2	3-3	4
0	0°					
1	51,4°	■	■	■	■	■
2	102,8°	■		■	■	■
3	154,2°	■		■	■	
4	205,6°	■		■		■
5	257,0°	■			■	■
6	308,4°	■	■		■	

		5a	1a-2a		3a-4a	
Pos.	Ang.	S	1	2	3-3	4
0	0°					
1	51,4°	■	■	■	■	■
2	102,8°	■		■	■	■
3	154,2°	■		■	■	
4	205,6°	■		■		■
5	257,0°	■			■	■
6	308,4°	■	■		■	



HT



TYPICAL APPLICATIONS	Electric hobs in freestanding cookers
WIRING DIAGRAMAS	2 standard positions rotary switch
GWFI	850 °C
GWIT	750 °C

7 positions rotary switch, ideal for electric hobs in freestanding cookers. M4 screw mounting and different shafts available. Special sequences with 4 - 5 - 6 positons are available.

- Terminals 6,3 mm
- M4 screw mounting
- Metal or plastic shafts
- With or without signal contact



Rating
12 A / 400 VAC - 30E3
T150 °C

16 (6) A / 250 VAC
T150 °C

According to EN61058-1
standard

OPTIONS

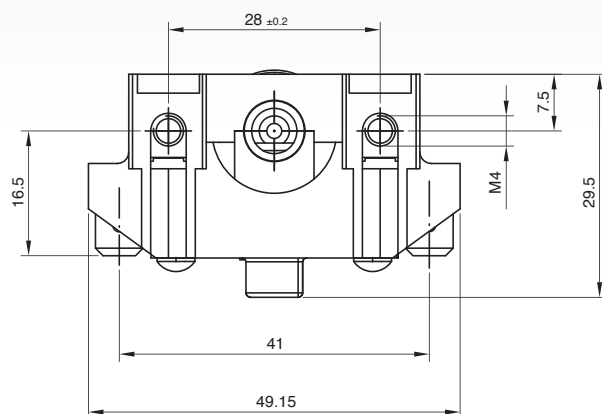
Metal or plastic shaft, with length on demand.

Metal shaft



Plastic shaft

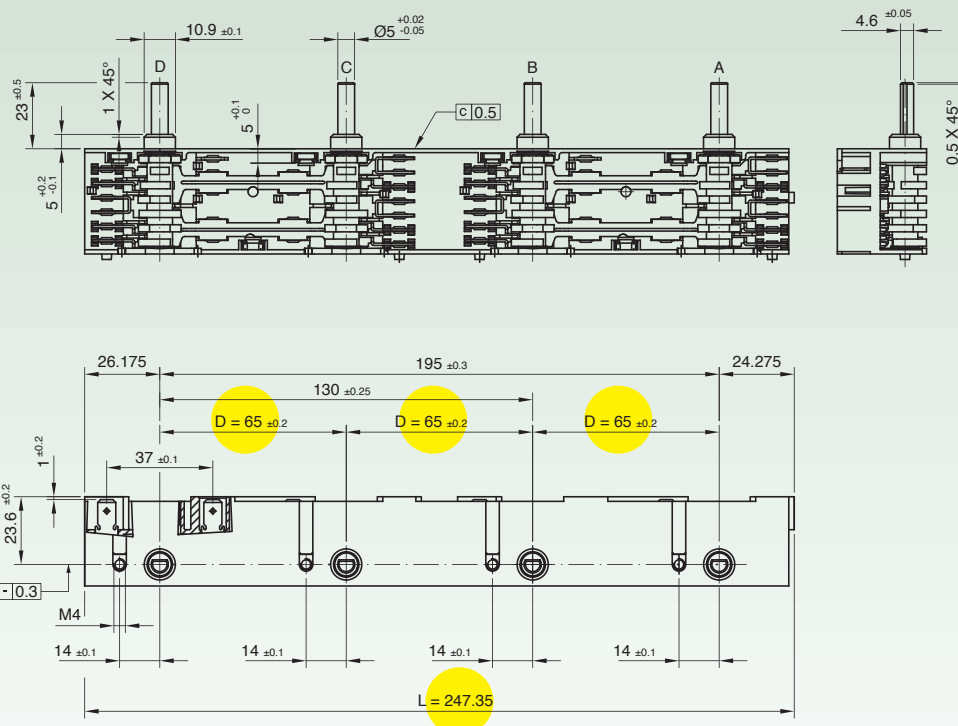


[illegible]

Pos.	Ang.	5	2	1	3-3	4
		P3	P1			P2
0	0°					
1	51,4°	■	■	■		■
2	102,8°	■	■			■
3	154,2°	■	■			■
4	205,6°	■	■			■
5	257,0°	■			■	■
6	308,4°	■		■		■



According to EN61058-1
standard

$$L = 230.45$$
$$D = 60 \pm 0.2$$




CH



TYPICAL APPLICATIONS Function selector switch

WIRING DIAGRAMAS 2 - 14 positions

CYCLE No. Up to 30.000

AMBIENT TEMPERATURE 150 °C

GWFI 850 °C

GWFI 750 °C

ADDITIONAL FEATURES

- M4 screw mounting
- 26 contacts version available

Thermostat version available

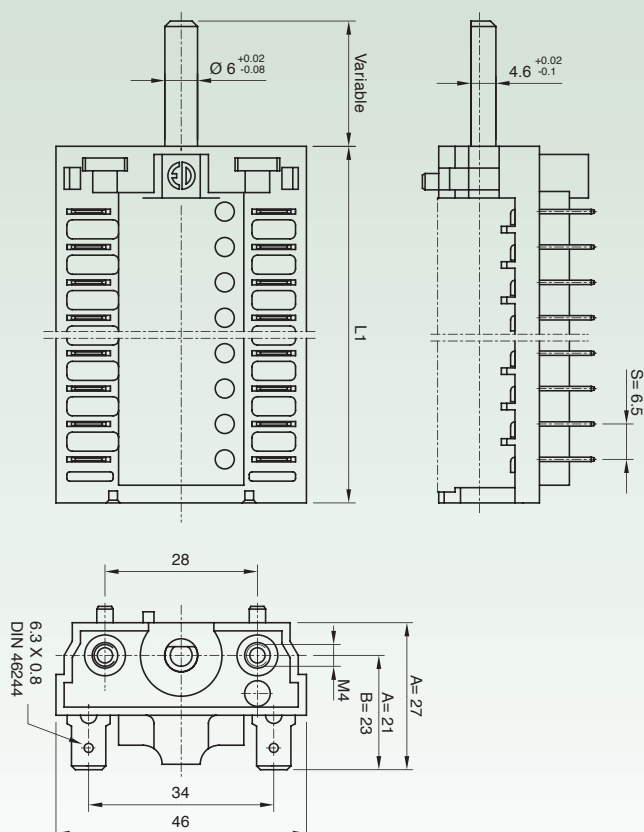


16 (6) A / 250 VAC - 30E3
 16 (8) A / 250-125 VAC - 10E3
 18 A / 250-125 VAC - 30E3
 12 A / 400 VAC - 30E3
 T150 °C

3/4 HP / 125 VAC
 18A / 250 VAC
 16A / 250 VAC
 T125 °C

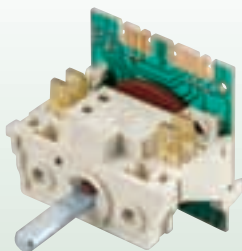
According to EN61058-1 standard

DIMENSIONS



CONTACT SEQUENCE

Basic Version					
Type	Contacts		L1		Version
	16(4)/250ac 6(2)/250ac	6(1.5)/250ac	S=7	S=6.5	
1-CH	1		29,5*		A
2-CH	2		25	36*	A
3-CH	3		32	33	A
4-CH	4		39	39.5	A, B
5-CH	5		46	46	A
6-CH	6		49,5		A
6-CH	6		53	52.5	A, B
7-CH	7			59	A, B
8-CH	8		67	65.5	A, B
9-CH	9			72	A
10-CH	10		81	78.5	A, B
11-CH	11		88	85	A, B
12-CH	12		95		A
13-CH	8	5	S=7	S=6	A
			97		



2CH with encoder



TYPICAL APPLICATIONS	Electronic and electrical function selector
WIRING DIAGRAMS	■ On demand
CYCLE No.	30.000
AMBIENT TEMPERATURE	85 °C
ADDITIONAL FEATURES	■ Solution combining selector and encoder functions, that allows to improve flexibility and compactness

Solution combining selector and encoder functions, that allows to improve flexibility and compactness.

Rating

16 (6) A / 250 VAC

10 (2) A / 400 VAC

18 A / 250 VAC

6 (4) A / 250 VAC

T 150 °C

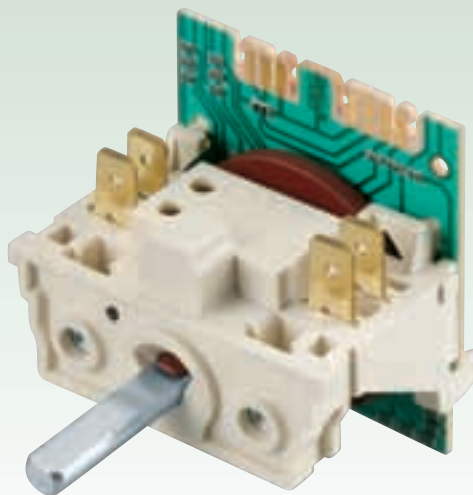
3/4 HP / 125 VAC

16 A / 250 VAC

13.8 A / 250 VAC

T 85 °C

According to EN61058-1 standard



DIMENSIONS

