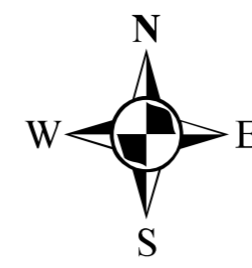
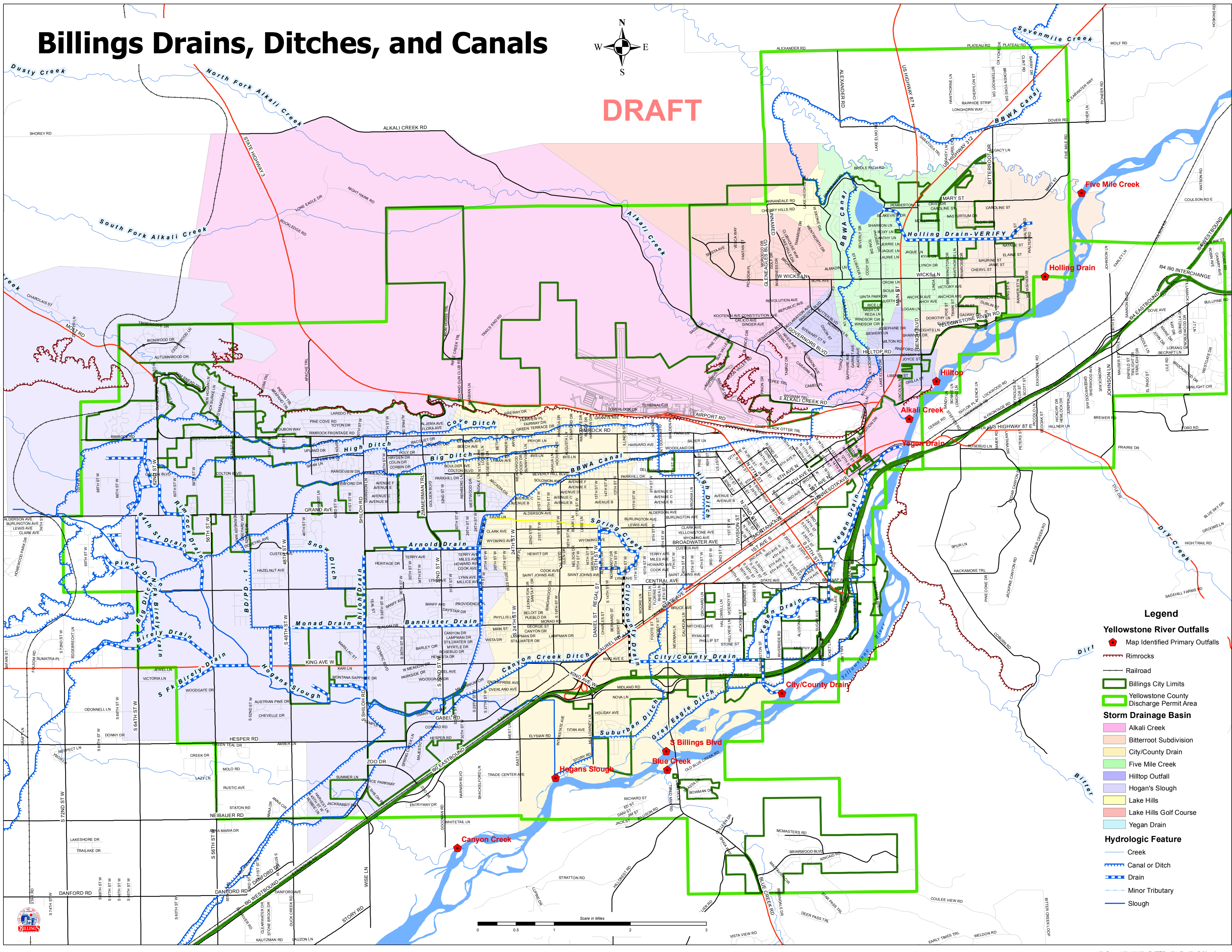


Billings Drains, Ditches, and Canals



DRAFT



Legend

- Yellowstone River Outfalls**
 - Map Identified Primary Outfalls
 - Rimrocks
 - Railroad
 - Billings City Limits
 - Yellowstone County Discharge Permit Area
- Storm Drainage Basin**
 - Alkali Creek
 - Bitterroot Subdivision
 - City/County Drain
 - Five Mile Creek
 - Hilltop Outfall
 - Hogan's Slough
 - Lake Hills
 - Lake Hills Golf Course
 - Yegan Drain
- Hydrologic Feature**
 - Creek
 - Canal or Ditch
 - Drain
 - Minor Tributary
 - Slough

