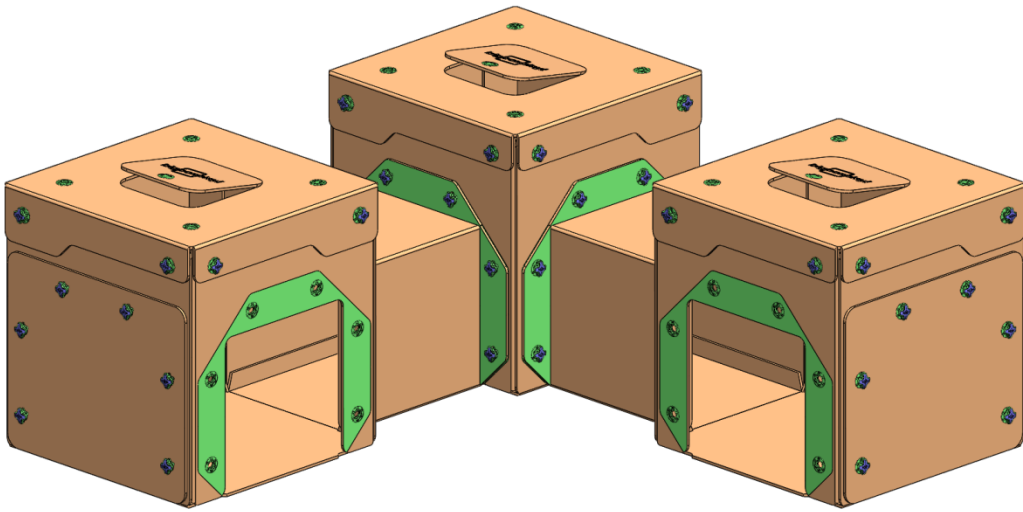


# BigBoxPlay Assembly Instructions for 5 Structures (3 Towers/2 Tunnels)

Picture shows corner configuration. BigBoxPlay is modular so we encourage you to explore many different configurations.

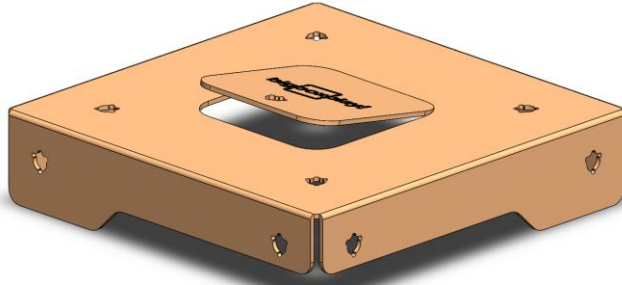


## Pre-Assembly Tips:

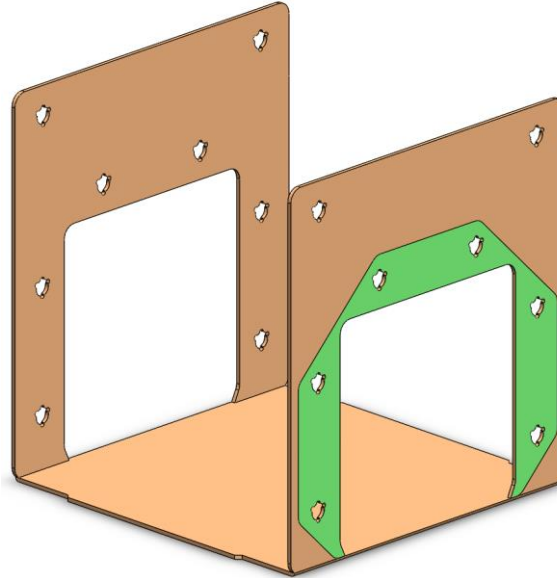
- Initial (one-time) assembly of all grommets may take a few hours. If possible, we suggest that you make it a 'family event' to build the initial system.
- When popping out cardboard cut-outs, it's best to push from the painted side to avoid tearing.
- The green sides come with a pop-out center that can be used as a swinging door. To do this, punch out the small 6 holes (3 at the top of the door and 3 just above the door) and insert 3 book rings of about 1 ½" each.
- Make sure you note the special instructions in Step 1 for the Male Non-Threaded Grommets.

# Parts Breakdown—Cardboard Pieces

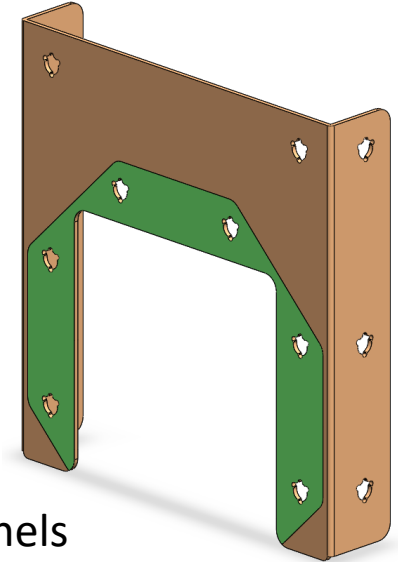
3x Tops



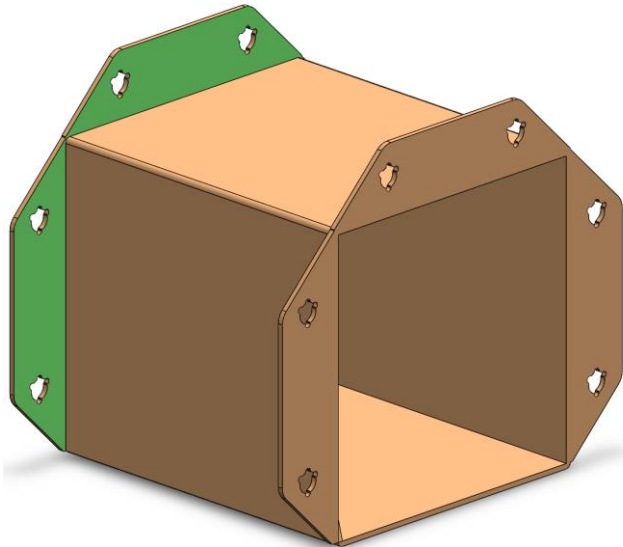
3x Bottoms



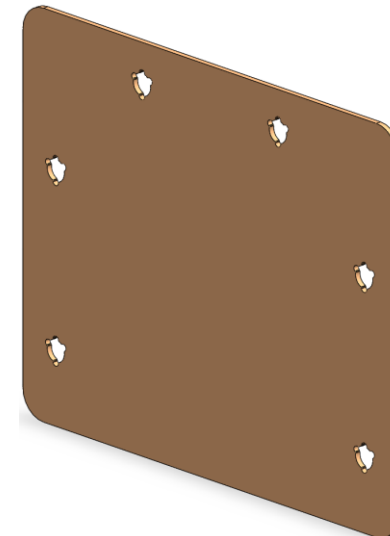
6x Sides



2x Tunnels



6x Panels



# Parts Breakdown—Plastic Parts for 5 Structure System

## Female Grommets

230x Female Grommets (3 Bags)



## Male Grommets

180x Male Threaded (3 Bags)

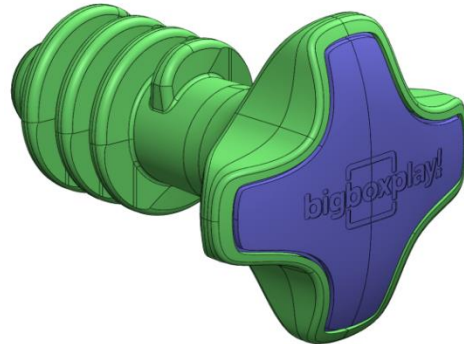


50x Male Non-Threaded (1 Bag)

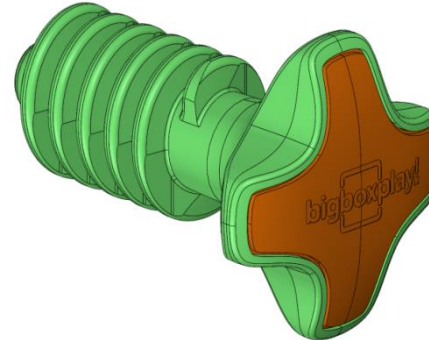


## Connector Knobs

84x Short Knobs (3 Bags)



8x Long Knobs (1 Bag)



## Step 1

### Male Non-Threaded Grommet Assembly

The Male Non-Threaded Grommets should be assembled to each of the Bottom pieces, at the 4 specified locations (Fig. A).

**Note:** these Male Non-Threaded Grommets should also be used with the Panels and the hole on the pop-up lid in the Top piece.



Female Grommet



Non-Threaded  
Grommet

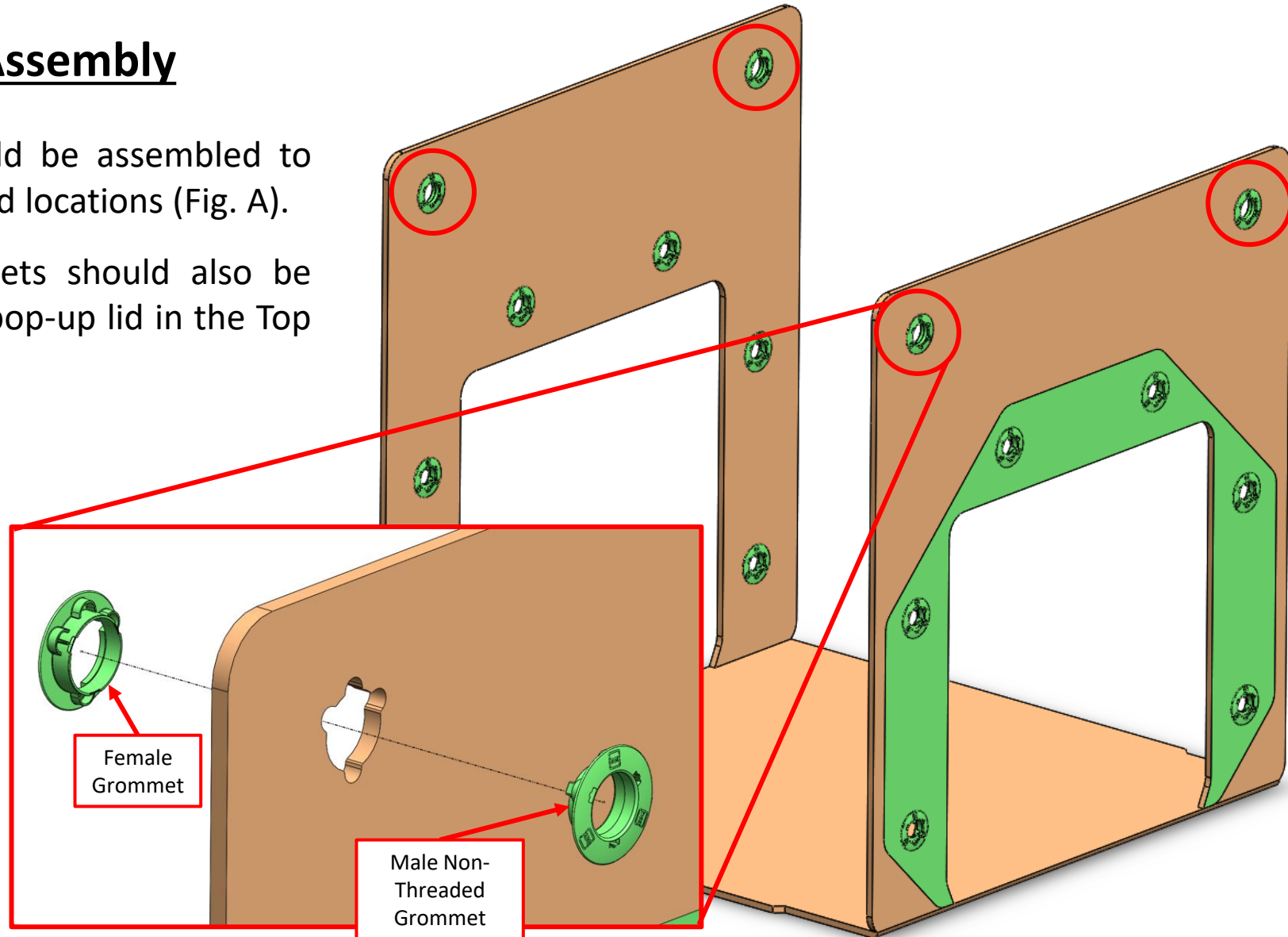
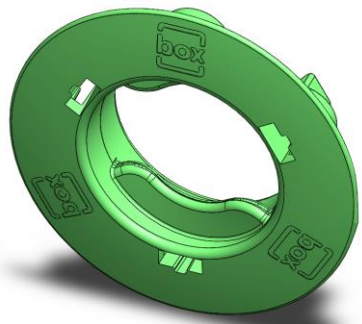


Fig. A – Non-Threaded Grommet Locations

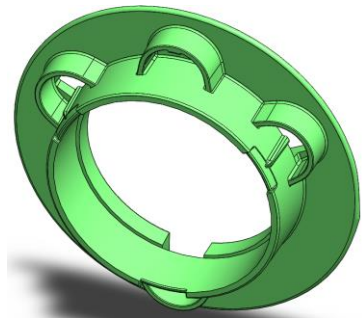
## Step 2

### Grommet Assembly

For the remaining holes in the Bottom, Side and Top pieces, connect the Male Threaded Grommets to the Female Grommets as shown in Figure B. Grommets should snap securely together when assembled.



Male Threaded Grommet



Female Grommet

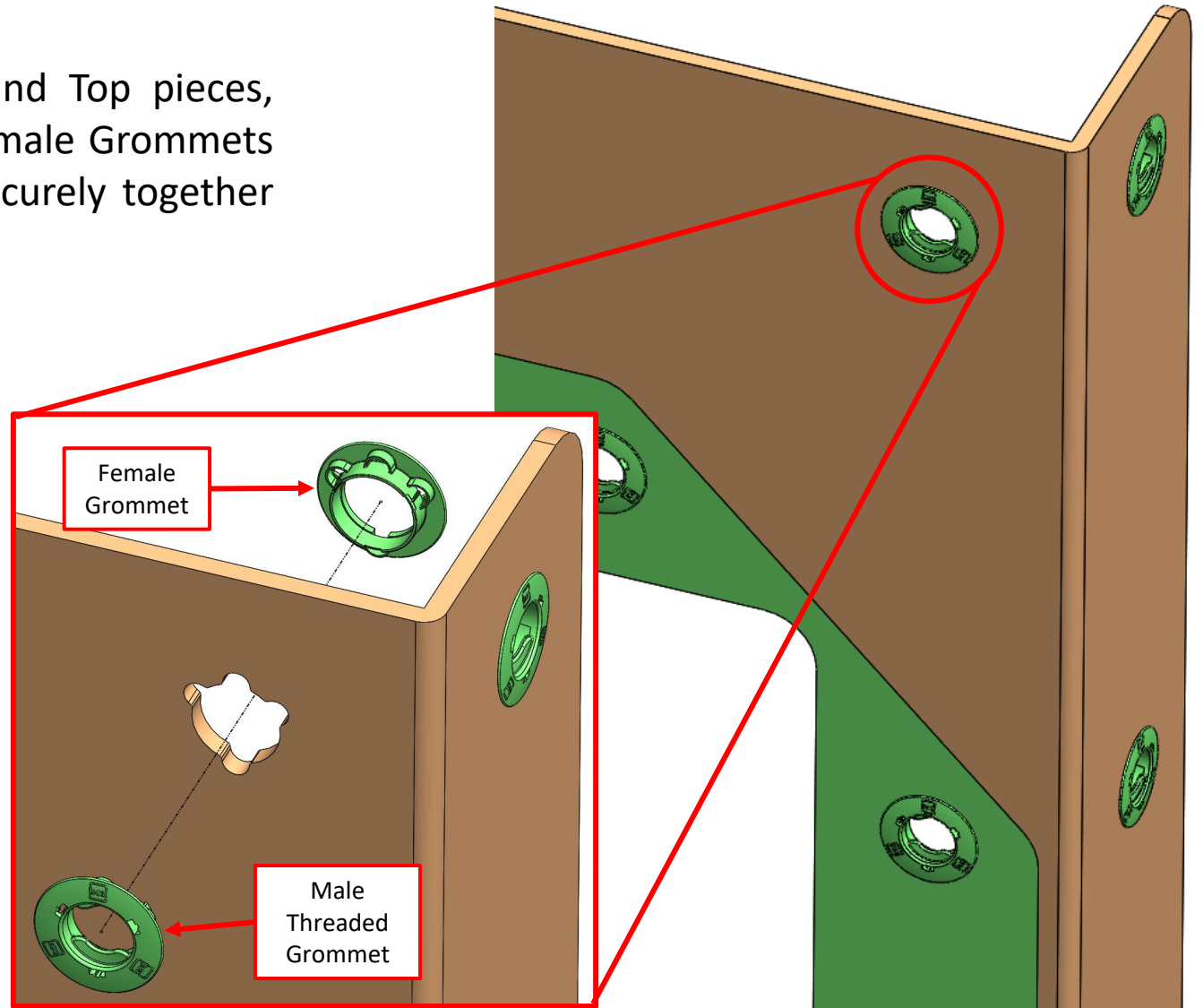


Fig. B - Grommet Assembly

## Step 3

### Tower Assembly

Assemble 2 Side pieces with 1 Bottom, topped off with 1 Top piece (Fig. C). The corresponding grommets will line up.

**Tip:** The Side flaps connect to the inside of the Bottom piece. Initially, you only need to install one Short Knob in the center hole of each side of the Bottom pieces to make the Tower secure enough to connect the Top.

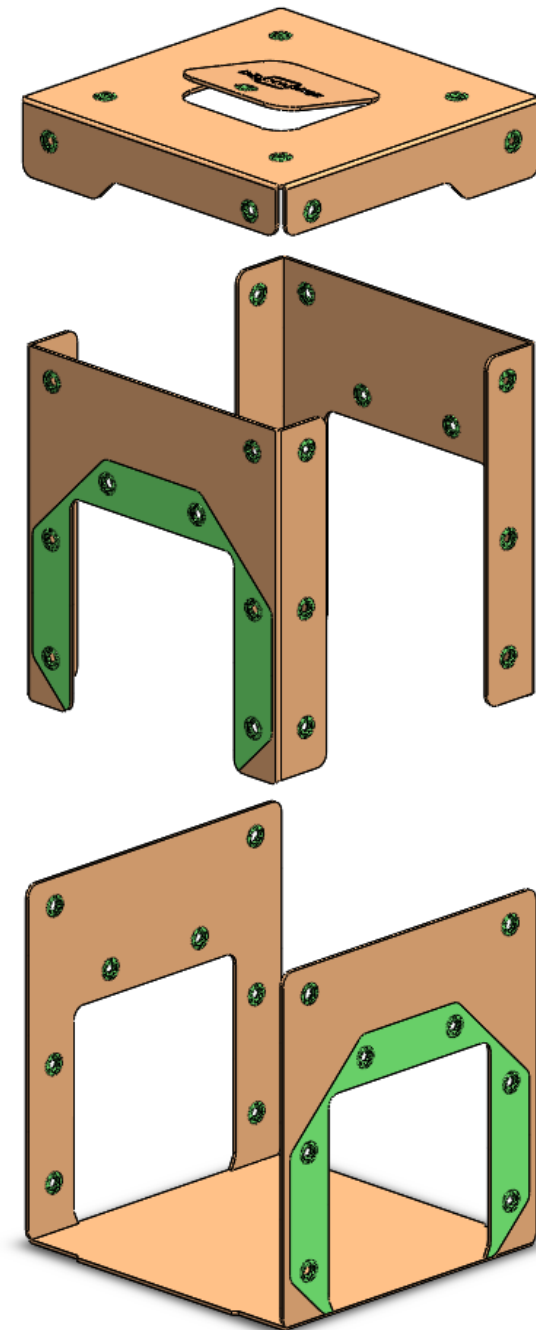
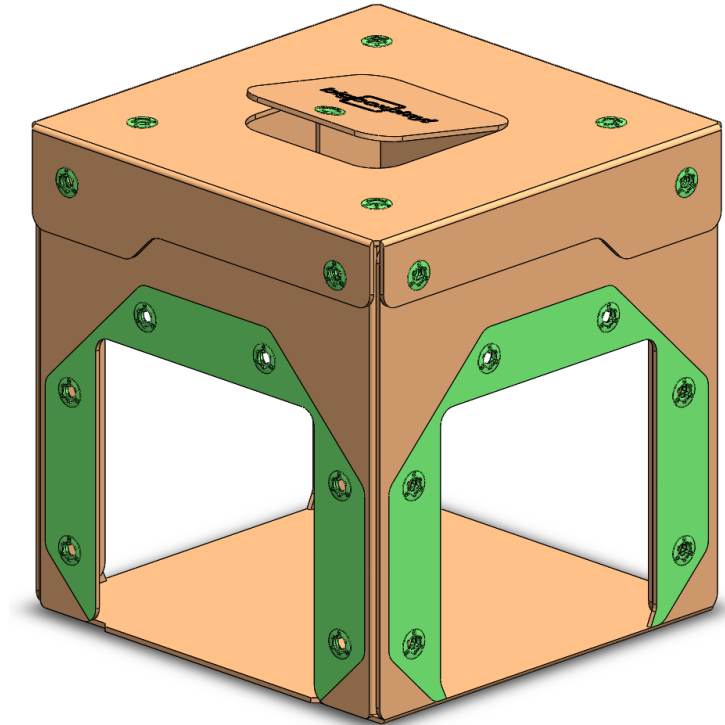


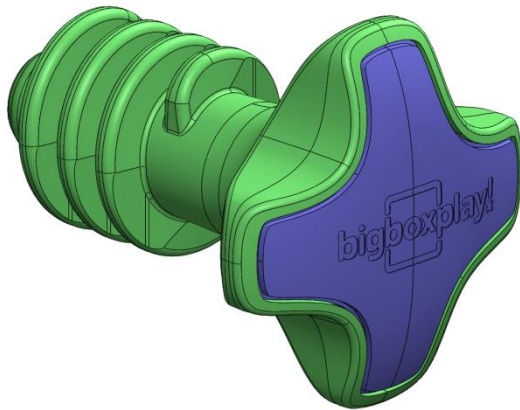
Fig. C – Tower Assembly



## Step 4

### Knob Assembly

To assemble, line up the grommets and twist in the Short Knob until its secure. To secure the Top piece to the Tower, 8 Short Knobs will be used (Fig. D).



Short Knob

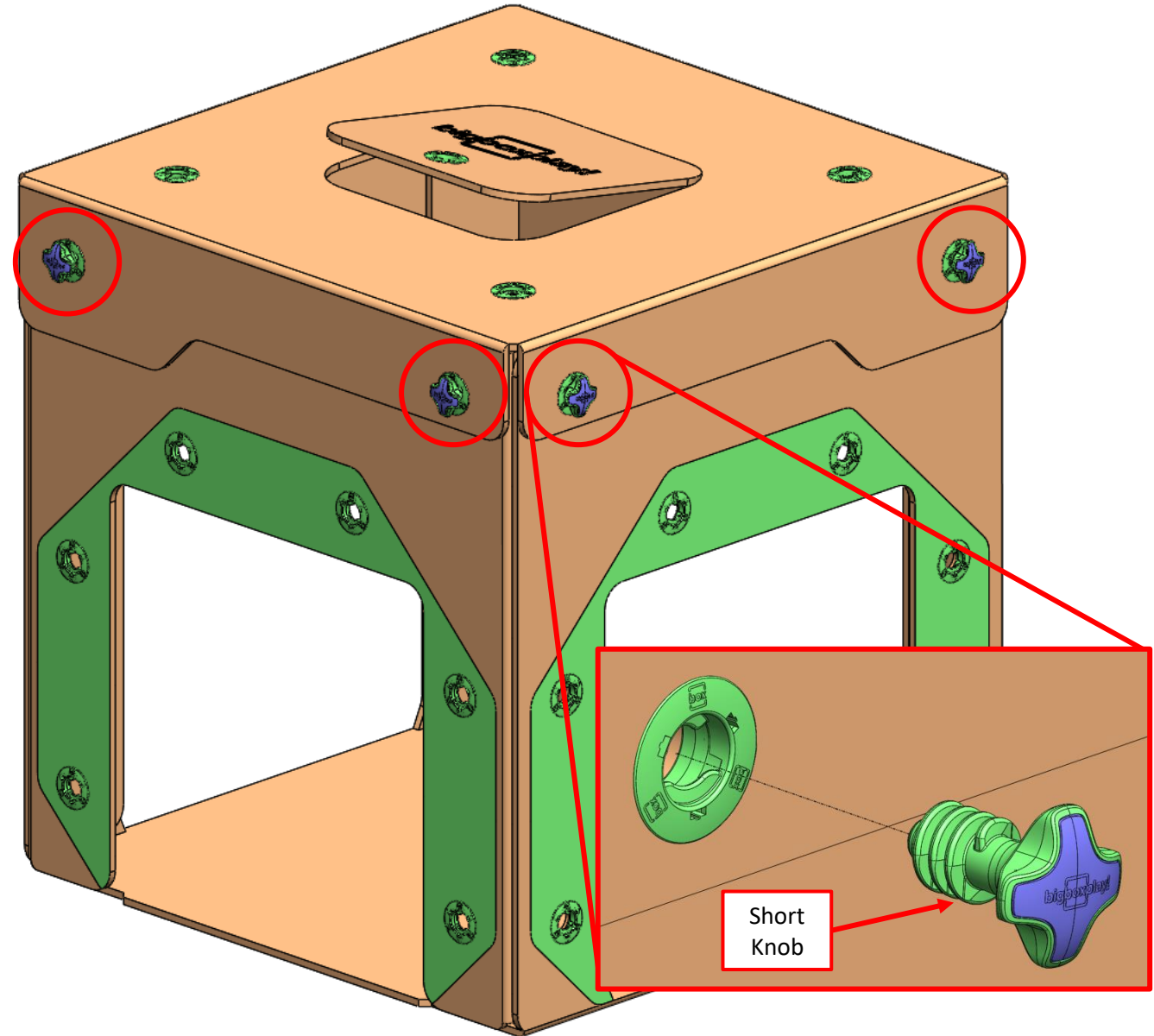


Fig. D – Knob Assembly

## Step 5

### Reinforcing Tower Sides

It is recommended to reinforce the Tower Sides with 4 Short Knobs if Panels or Tunnels are not used to cover openings (Fig. E).

**Tip:** BigBoxPlay is totally modular so you can connect a Panel or Tunnel to any opening. We encourage you to experiment with different configurations to discover the configuration that works best for you.

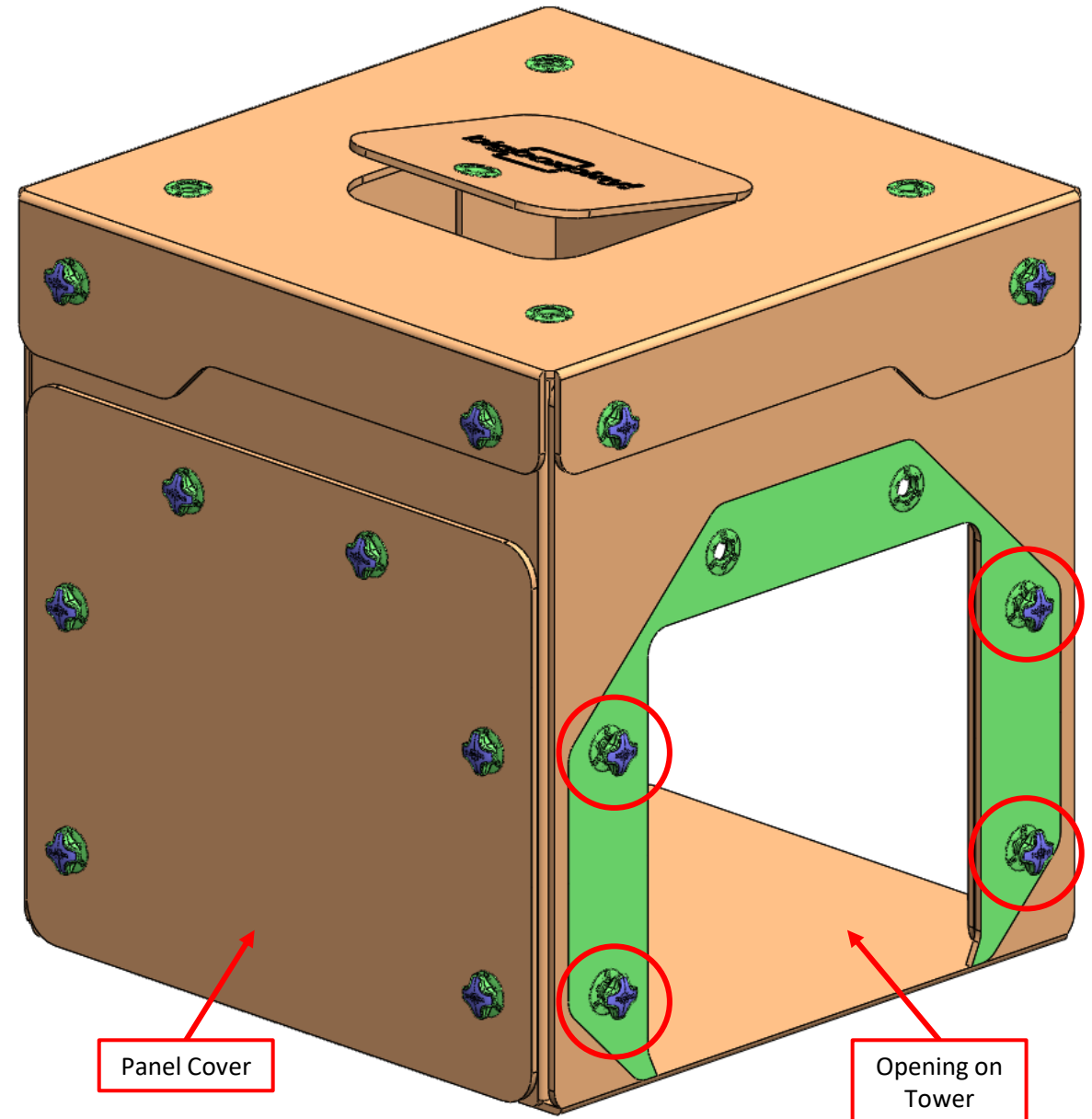


Fig. E – Reinforcing Towers



## Step 6

### Tunnel Cardboard Assembly

Line up the 6 grommets on the Tunnel piece to the side of the assembled Tower and secure with Short Knobs (Fig. F).

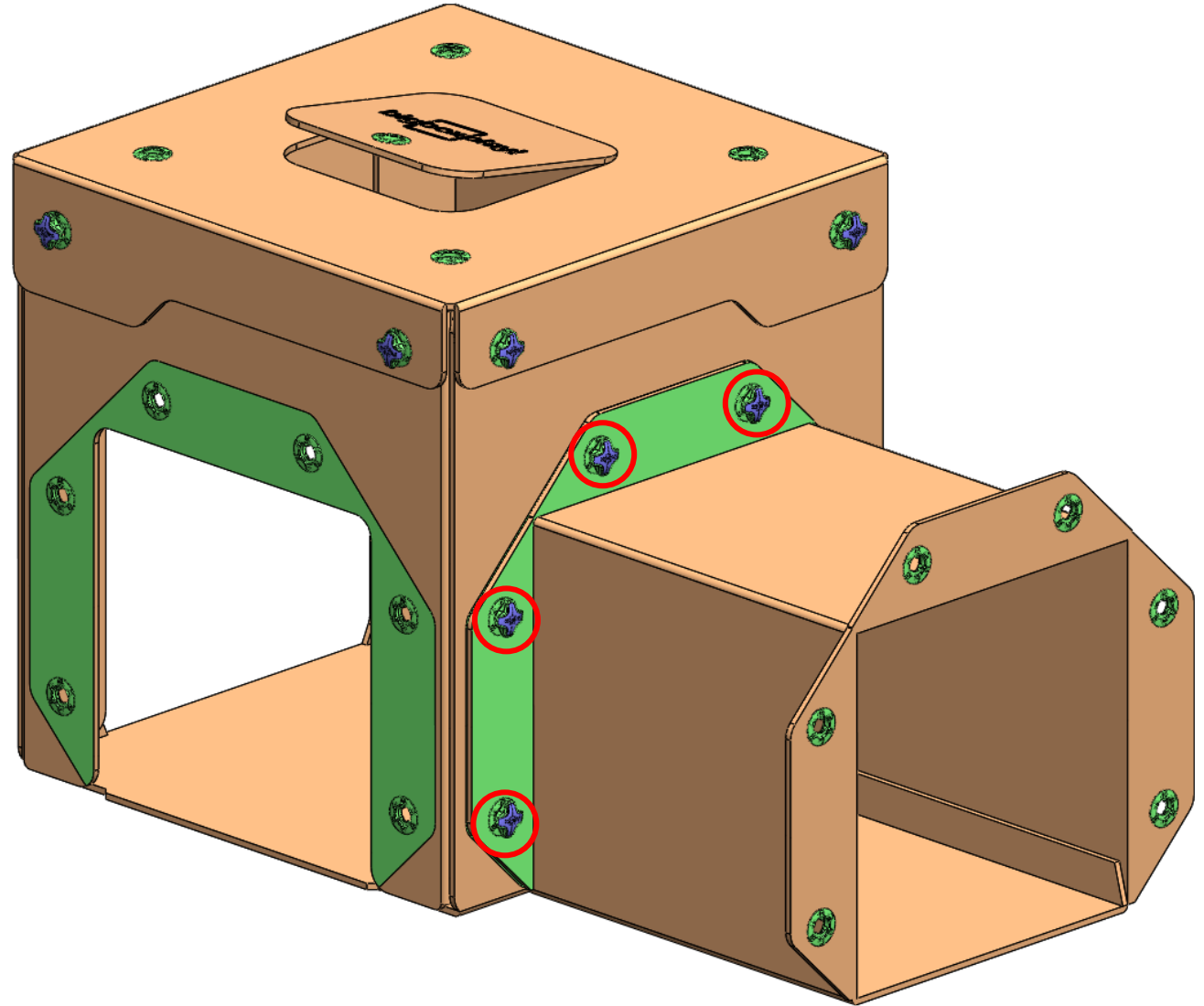
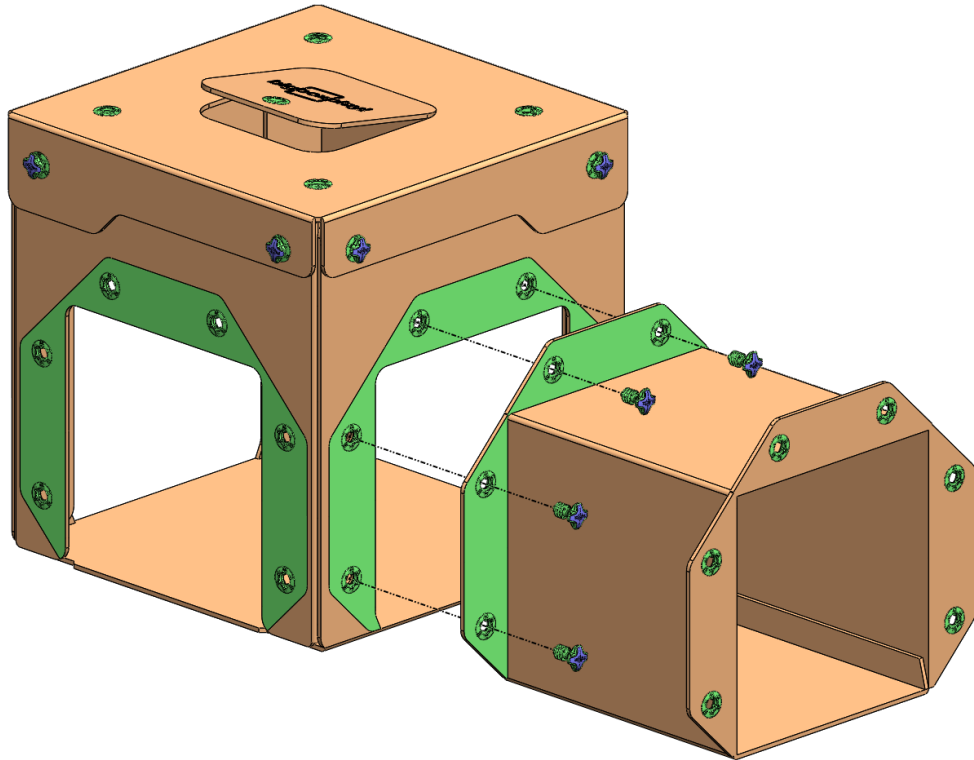


Fig. F – Tunnel Assembly

## Step 7

### Tower-to-Tower Assembly (Using the Orange Long Knobs)

Line up the 4 grommets on the corners of one side of the Tower with the corresponding grommets on another Tower with Long Knobs (Fig. G).

**Note:** This is the main reason for Step 1 because it's easier to connect 2 Towers if you use the Male Non-Threaded Grommets located in the Bottom Cardboard piece of the Tower.

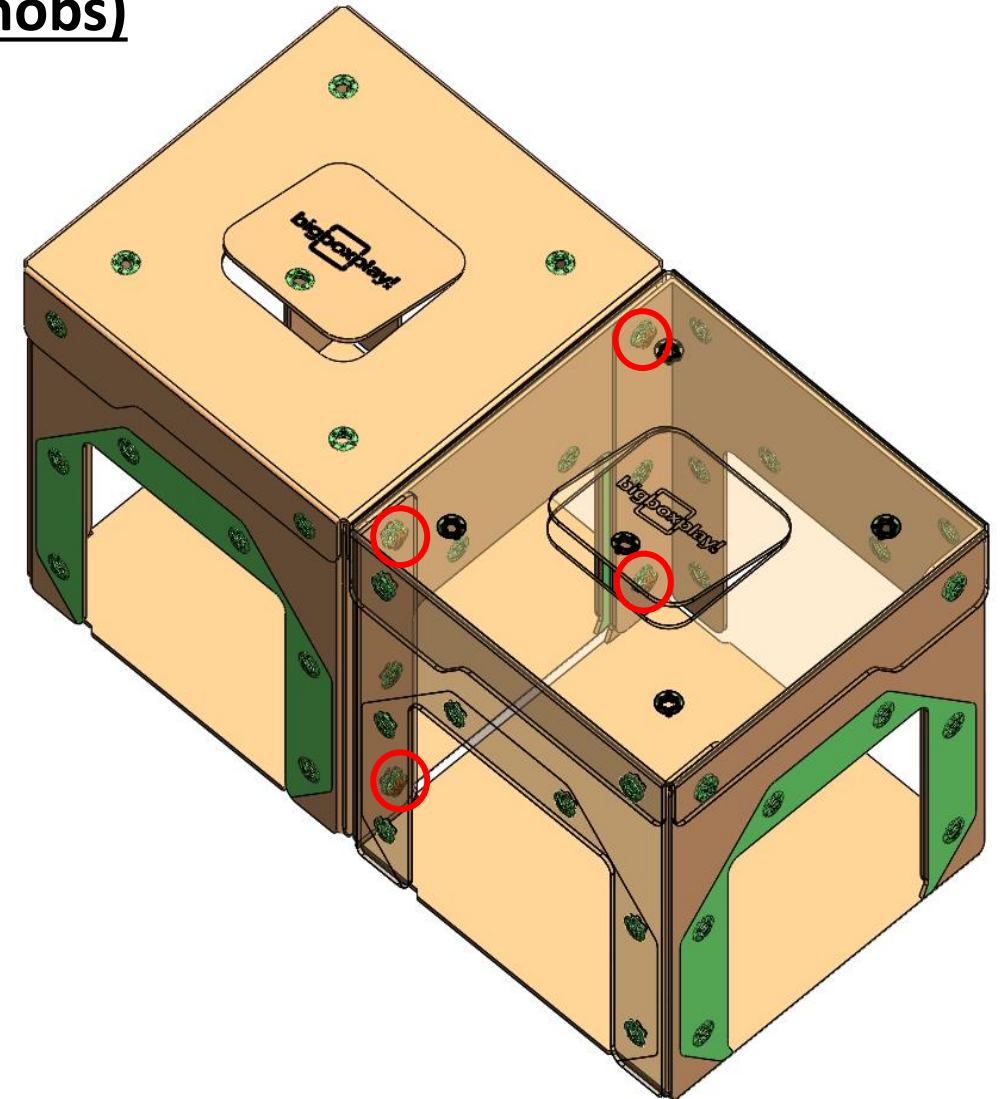
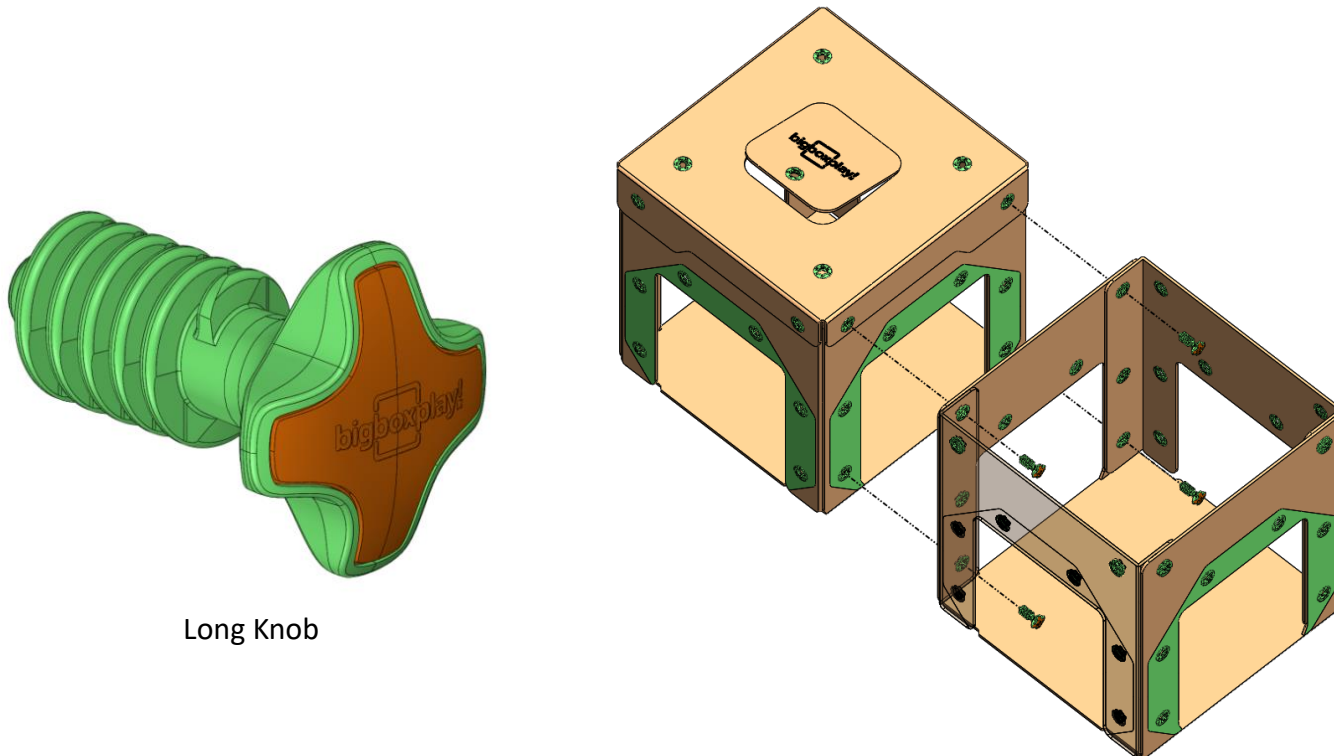


Fig. G – Tunnel to Tunnel Assembly

## Completed Playset (Corner Configuration)

