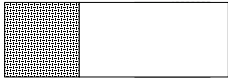


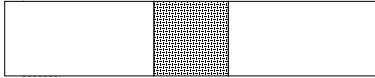
Peninsula Piecemakers Winter Mystery **Part 3**

Block 1

Take a background $2\frac{1}{2}$ " by $4\frac{1}{2}$ " rectangle and sew it to a print $2\frac{1}{2}$ " square.

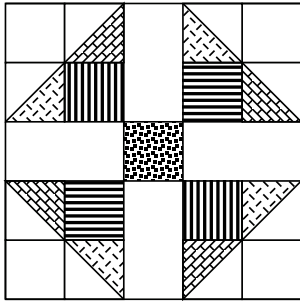


Add a second background rectangle to the other side of the print square.



Make a total of **10** of these.

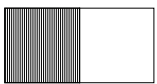
Make **10** Block 1 using this diagram:



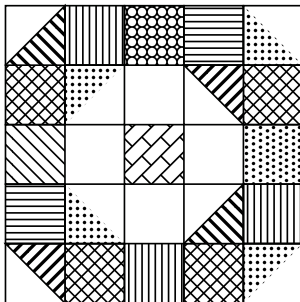
Block 2

Take a background $2\frac{1}{2}$ " square and a print $2\frac{1}{2}$ " square and sew together.

Make a total of **40** of these.

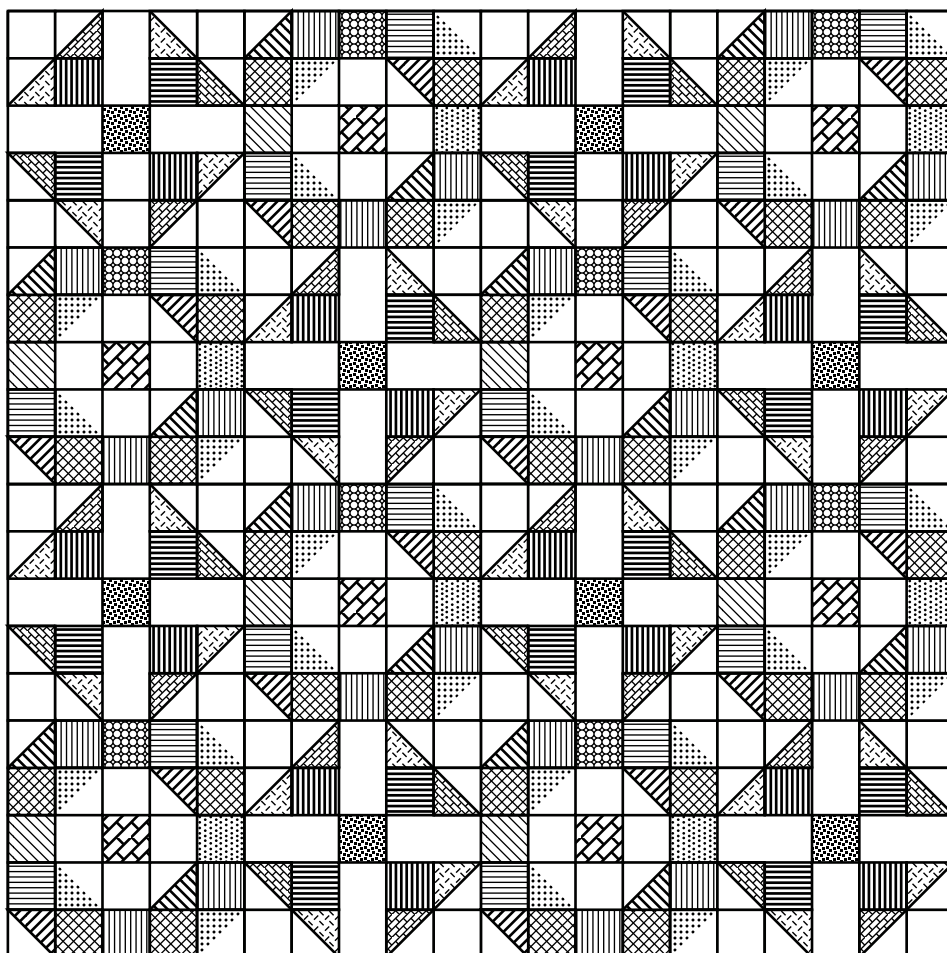
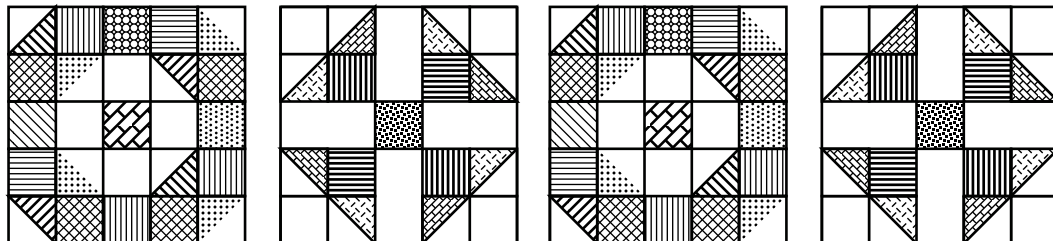


Make **10** blocks 2 using this diagram:



Assembling the quilt.

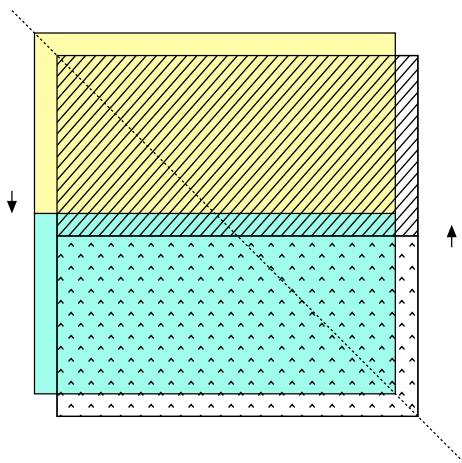
The blocks are set 4 by 5, alternating the two blocks.



The first border is made from the **6** unused $2\frac{1}{2}$ background pieces. It is best to measure your quilt top to get the right measurements.

The outer border is a “piano key” border. When you sewed together pairs of rectangles in step 2 you started to assemble the border.

The corners are mitred, to make them you will draw a diagonal on the wrong side of a pair of rectangles that have been sewn together. Take a second pair of rectangles and put the two units right sides together, the pressing of the seams can help lock the two pieces as you sew along the diagonal. Once sewn, cut $\frac{1}{4}$ ” from the sewn line and press open.



I have tried to show the way things will look... you will have the edges lined up I have them offset to hopefully help with visualisation.

You will need to make a total of 4 corner units.

For each of the long sides you need a total of **27** rectangles. Use the pairs you made in part 2 of the mystery. For the short sides you need **22** rectangles.

