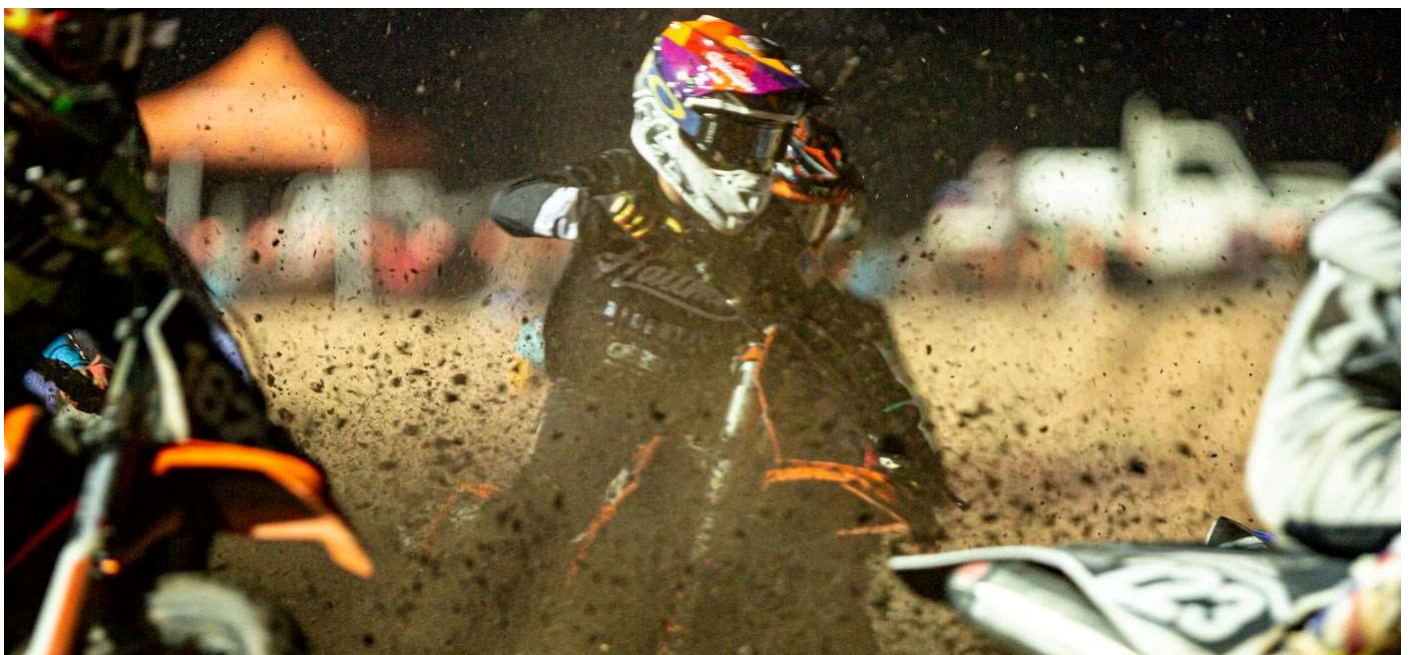




# Club Sponsorship Proposal 2020



## **Introduction**

Motocross is an evolving sport that continues to grow throughout Australia and the world.

The Top End Moto Cross club was formed in 1998 because there was no existing legal club or track facility in Darwin at this time.

The club now has over 300 members and currently boasts and manages an impressive facility at Campbell Park Motocross Complex located on Catalina Road, Palmerston. The facility now includes 3 tracks (natural terrain, motocross and minibike), clubrooms, canteen, shaded spectator areas and evening racing facilities.

Through the Clubs Volunteers and our affiliation with other associations including Motorsports NT, Territory Quad Association and Motorcycling Australia, we are able to maintain a "safe and controlled environment" for all spectators and participants which range from 4 years old through to veteran and master class riders. Importantly the level of our tracks is achieved under the guidance and control of Motorcycling Australia (the sport's governing body in Australia).

It's because of our Club that our Members can participate in National events across Australia.

It's also important to note that the Campbell Park Motocross Complex goes a long way to assist the local community in controlling the amount of illegal dirt bike riding especially in junior age riders. This result alone motivates the club to provide further events and facilitate professional coaching days.

## **2020 Season**

While the Campbell Park Motocross Complex is available to members all year, the 2020 Motocross season Starts in Feb and finishes end of 2020. With over 12 motocross events throughout the year we attract participants from across the NT and Australia.

During the 3 months "Off season" the Club Volunteers are working on event Calendars and track maintenance.

While many small events take place throughout the year, our main events attract over 80 race entries per meeting and approximately 250 spectators. This result means that over 3,000 people attend the facility throughout year. Not including day to day riders.

## **Sponsorship Opportunities**

As with running any business, especially a not for profit organisation, the Club cannot operate without funds and appreciates the support of sponsors. Without the support of sponsors the club couldn't maintain safe facilities.

We seek your support. The opportunity for you to contribute to the Community and gain exposure are as follows:

## MAJOR EVENT SPONSOR (4x packages available)

This package is the event naming rights to 1 of the 4 main race series. All major event sponsors will receive logos on all club documents, advertisements in each program, posters and on-track signage at the track and continuous promotion throughout all marketing means that the club undertakes along with PA announcements throughout the event.

**\*\* Sponsor to supply appropriate size signage, TEMCC will maintain signage during the event \*\***

- **"YOUR BUSINESS"** Top End Thunder Series – 3 round series **\$1500**
- **"YOUR BUSINESS"** Women in MX Series – 3 round series **\$1500**  
(WIM package will include class naming rights in Mr MX 6 round series)
- **"YOUR BUSINESS"** Mini MX Series – 3 round series **\$ 350**
- **"YOUR BUSINESS"** Mr MX Series – 6 round series **\$4500**

## SILVER PACKAGE (3 x packages available)

**\$ 600**

This package includes all of the above with the exception of the series naming rights and signage is limited to fence signage.

**\*\* Sponsor to supply appropriate size signage, TEMCC will maintain signage during the season \*\***

## BRONZE PACKAGE CLASS SPONSOR (9 x packages available)

As per the silver package with the exception of the logos on all documentation. Bronze sponsors still receive advertisements in all programs along with PA announcements throughout the racing season.

- 50cc Non-Comp & 50cc Competitive **\$250**
- 65cc **\$275**
- 85cc **\$300**
- Junior Lites **\$350**
- B Grade **\$450**
- Clubman **\$450**
- Veterans **\$450**
- All Quad Classes **\$500**
- Pro Lites & Pro Open **\$800**

## SIGN PACKAGES

Signage is available in many places of the Campbell Park MX Complex.

**"We have made it very easy for you. TEMCC will maintain signage during the race season"**

### Facilities

- **"YOUR BUSINESS Clubhouse Naming Rights"** – (inc. Perpetual Winners plaque in clubhouse) **\$1500**
- **"YOUR BUSINESS Motocross Track"** – (1x sign size 1.2 x 3mtrs & logo on all flag point signage) **\$1500**
- **"YOUR BUSINESS Mini Motocross Track"** – (1x sign size 1.2 x 3mtrs & logo on all flag point signage) **\$ 600**
- **"YOUR BUSINESS Natural Terrain Track"** – (1x sign size 1.2 x 3mtrs & logo on all flag point signage) **\$ 600**

**\*\* Above prices include initial artwork, production, supply and fixing of signage.\*\***

### Fencing

- Spectator Fence Signage **Per Annum \$400**
- Pit Fence Signage **\$200**

**\*\* Sponsor to supply appropriate size signage, TEMCC will maintain signage during the season \*\***

Other support packages can be negotiated on an individual basis with the club on a per need basis and any support of the club for the 2020 season is appreciated.

## Conclusion

We look forward to your business being involved with the club as we believe that any partnership with the club can be very beneficial to both parties and we look forward to working with you to ensure every success is achieved for the Top End Motocross Club, the community and your business.

For more details please contact:

Cilla Thomas	-	TEMCC President	-	0429 212 492
Tania Rice	-	TEMCC Treasurer	-	<a href="mailto:temcc@hotmail.com">temcc@hotmail.com</a>

# TEMCC 2020 Calendar of Events

9 <sup>th</sup> February:	Come 'n' Try Fun Day / TEMCC Club Membership Sign On
22 <sup>nd</sup> February:	Junior Licence Coaching Afternoon
1 <sup>st</sup> March:	Top End Thunder Series Natural Terrain Round 1
1 <sup>st</sup> March:	Women in MX Series Round 1
15 <sup>th</sup> March:	Top End Thunder Series Natural Terrain Round 2
29 <sup>th</sup> March:	Top End Thunder Series Natural Terrain Round 3
19 <sup>th</sup> April:	Mini MX Round 1 (morning event)
24 <sup>th</sup> April:	Wet Practice - Night
9 <sup>th</sup> May:	Mr MX Round 1 (night event)
16 <sup>th</sup> May:	Mini MX Round 2 (afternoon event)
23 <sup>rd</sup> - 24 <sup>th</sup> May:	BSMX (Ben Schodel) Riding School
30 <sup>th</sup> May:	Wet Practice - Day
13 <sup>th</sup> June:	Wet Practice - Night
20 <sup>th</sup> June:	Mr MX Round 2 (night event)
20 <sup>th</sup> June:	Women in MX Series Round 2
27 <sup>th</sup> -28 <sup>th</sup> June:	Riding School <b>TBC</b>
6 <sup>th</sup> – 11 <sup>th</sup> July:	Aussie Jnr MX @ Rockhampton QLD
1 <sup>st</sup> August:	Mr MX Round 3 (night event)
16 <sup>th</sup> August:	Mini MX Round 3 (morning event)
22 <sup>nd</sup> August:	Mr MX Series Round 4 (night event)
4 <sup>th</sup> September:	Wet Practice - Night
12 <sup>th</sup> September:	MX Series Round 5 (night event)
26 <sup>th</sup> – 27 <sup>th</sup> September:	Riding School <b>TBC</b>
3 <sup>rd</sup> October:	Wet Practice - Day
10 <sup>th</sup> October:	Mr MX Series Round 6 (night event)
30 <sup>th</sup> – 31 <sup>st</sup> October:	2 Day Event inc. Women in MX Series Round 3

**TEMCC will also be running Come & Try Ride Days for Junior Development and additional club coaching throughout the 2020 Season**