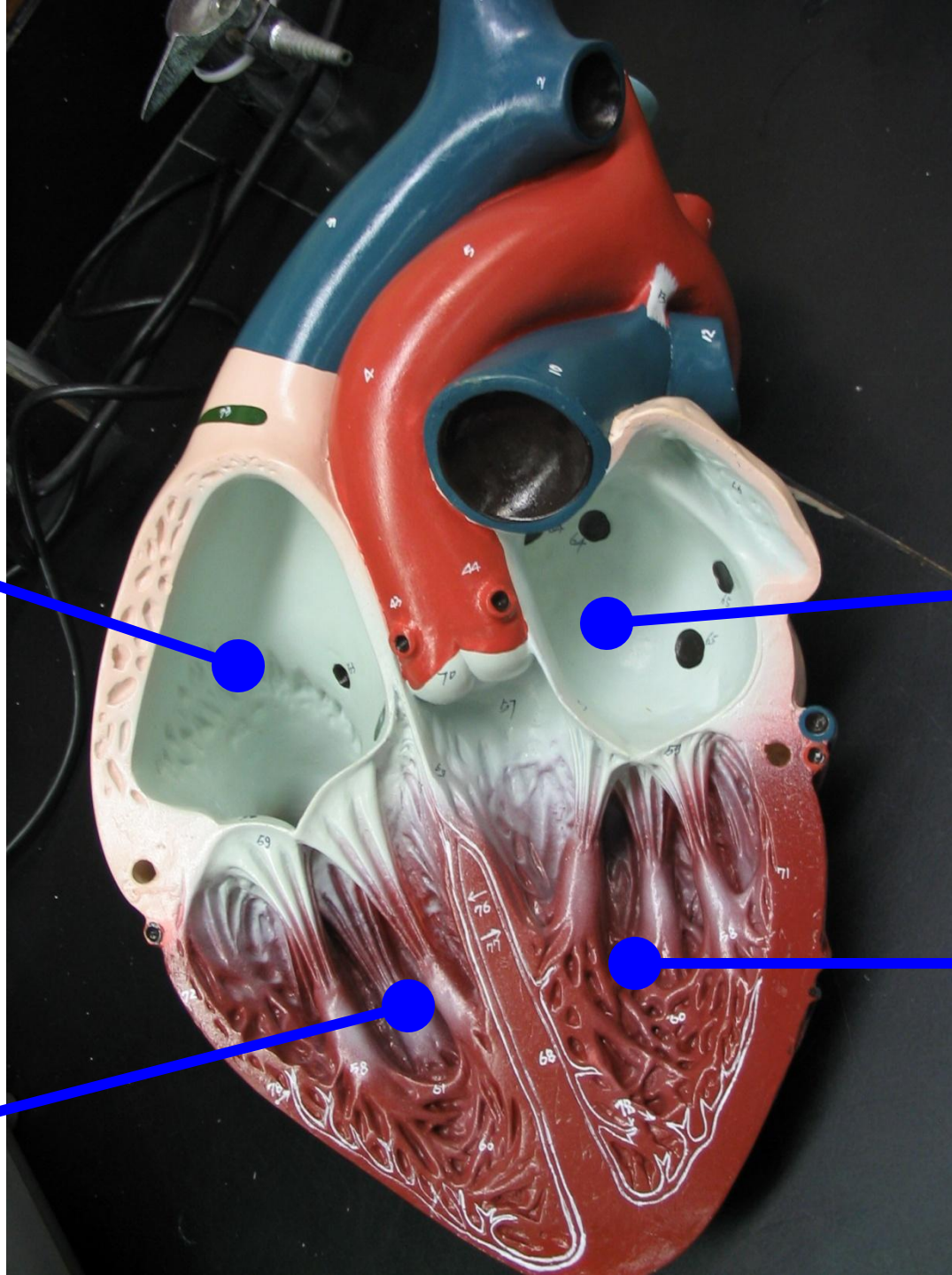


Right  
Atrium

Left  
Atrium

Left  
Ventricle

Right  
Ventricle



Left  
Auricle

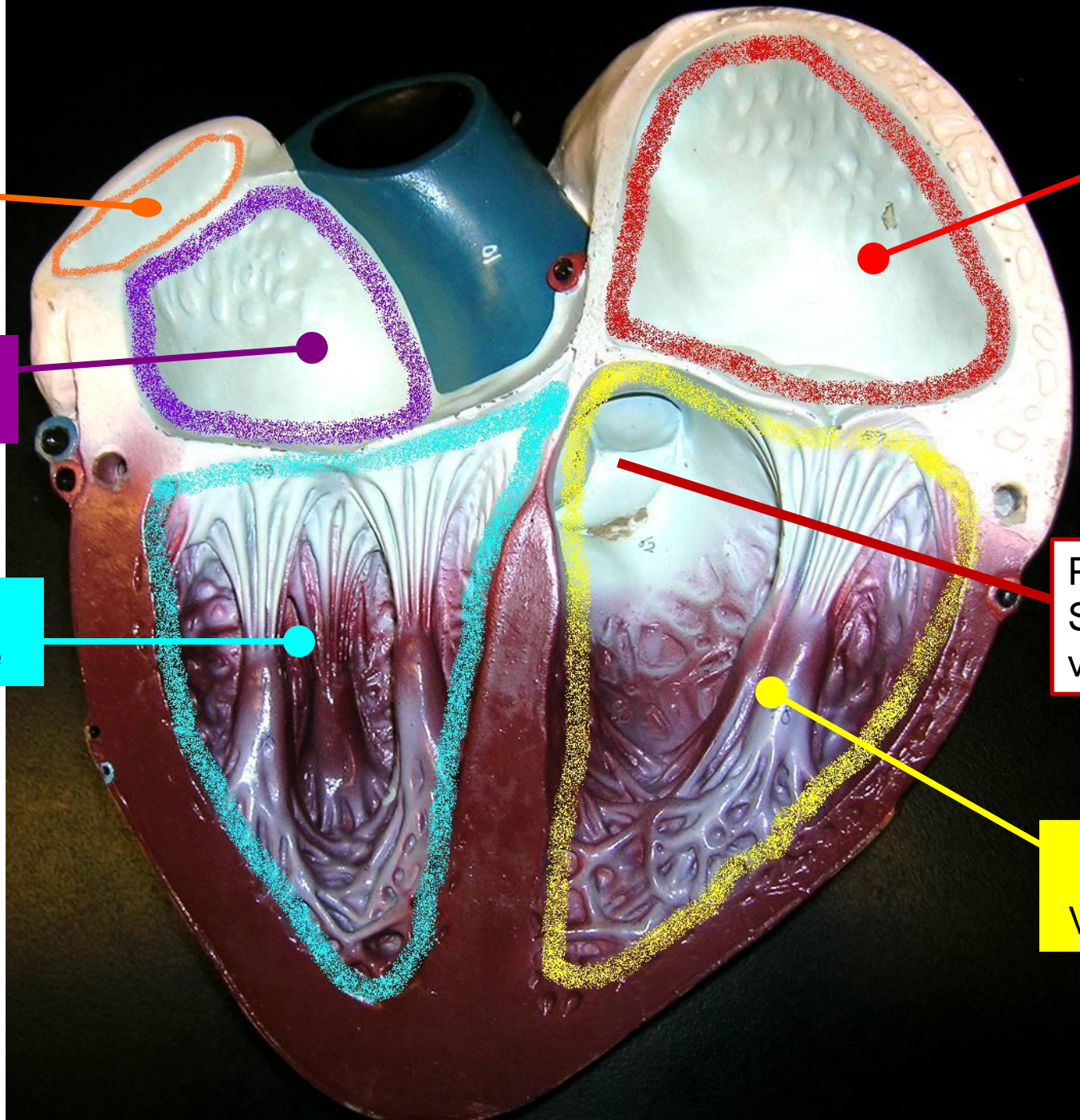
Left  
Atrium

Left  
Ventricle

Right  
Atrium

Pulmonary  
Semilunar  
valve

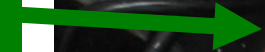
Right  
Ventricle



Superior  
Vena  
Cava



Sinoatrial  
node



Arch  
of  
Aorta



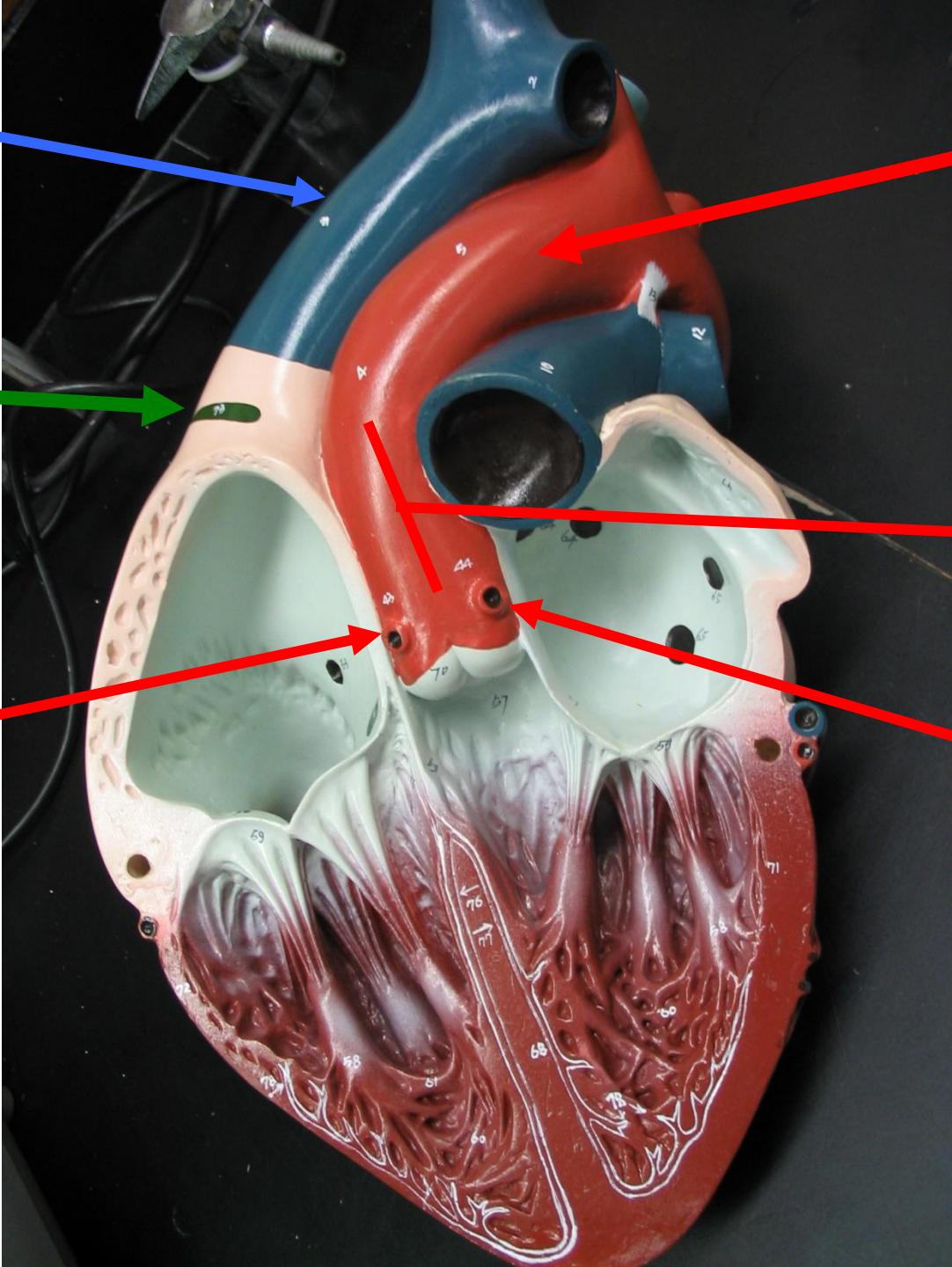
Ascending  
Aorta

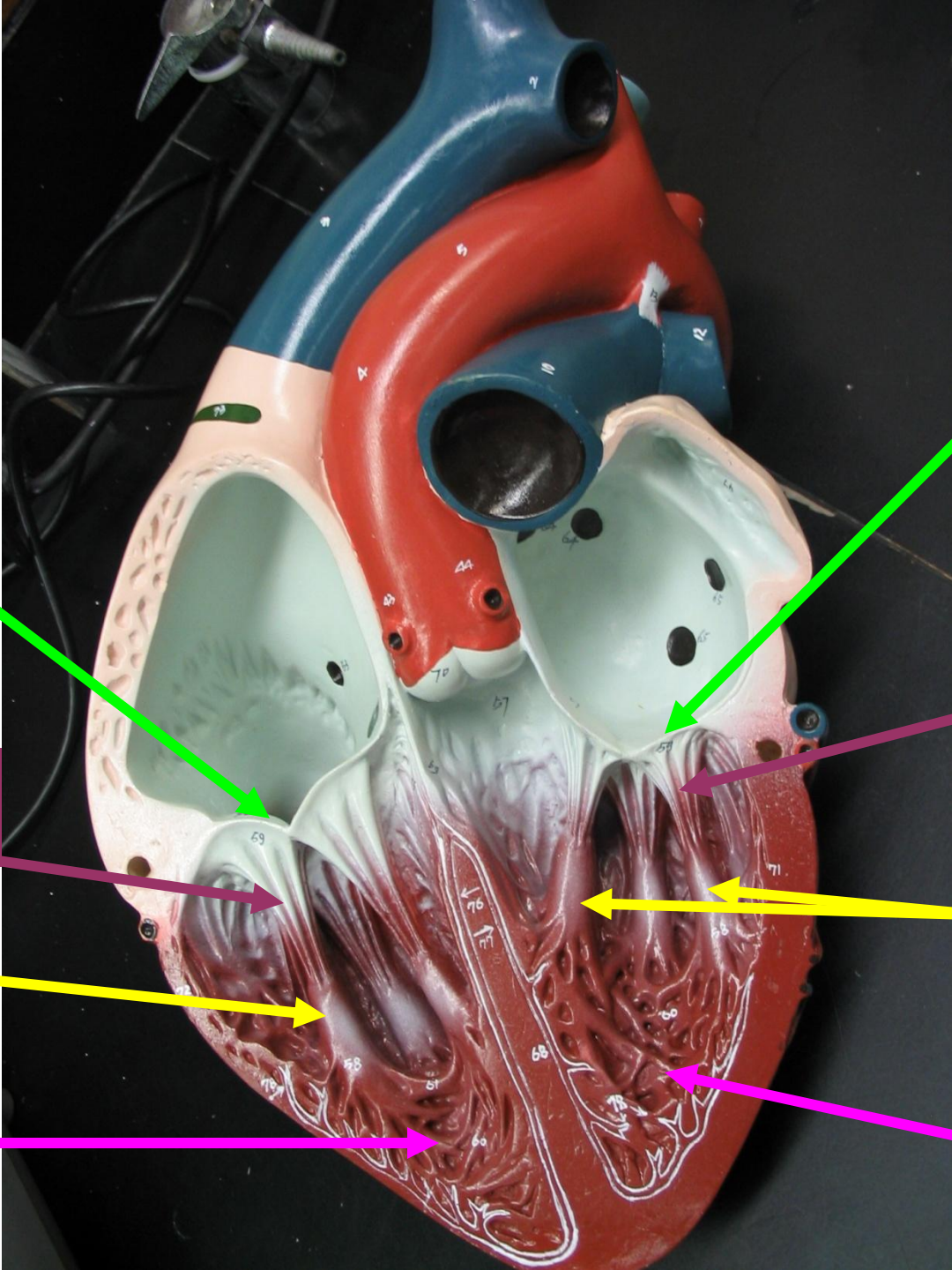


Orifice of  
Right  
Coronary  
Artery



Orifice of  
Left  
Coronary  
Artery





Tricuspid Valve

Mitral/Bicuspid Valve

Chordae Tendinae

Chordae Tendinae

Papillary Muscles

Papillary Muscles

Trabeculae Carneae

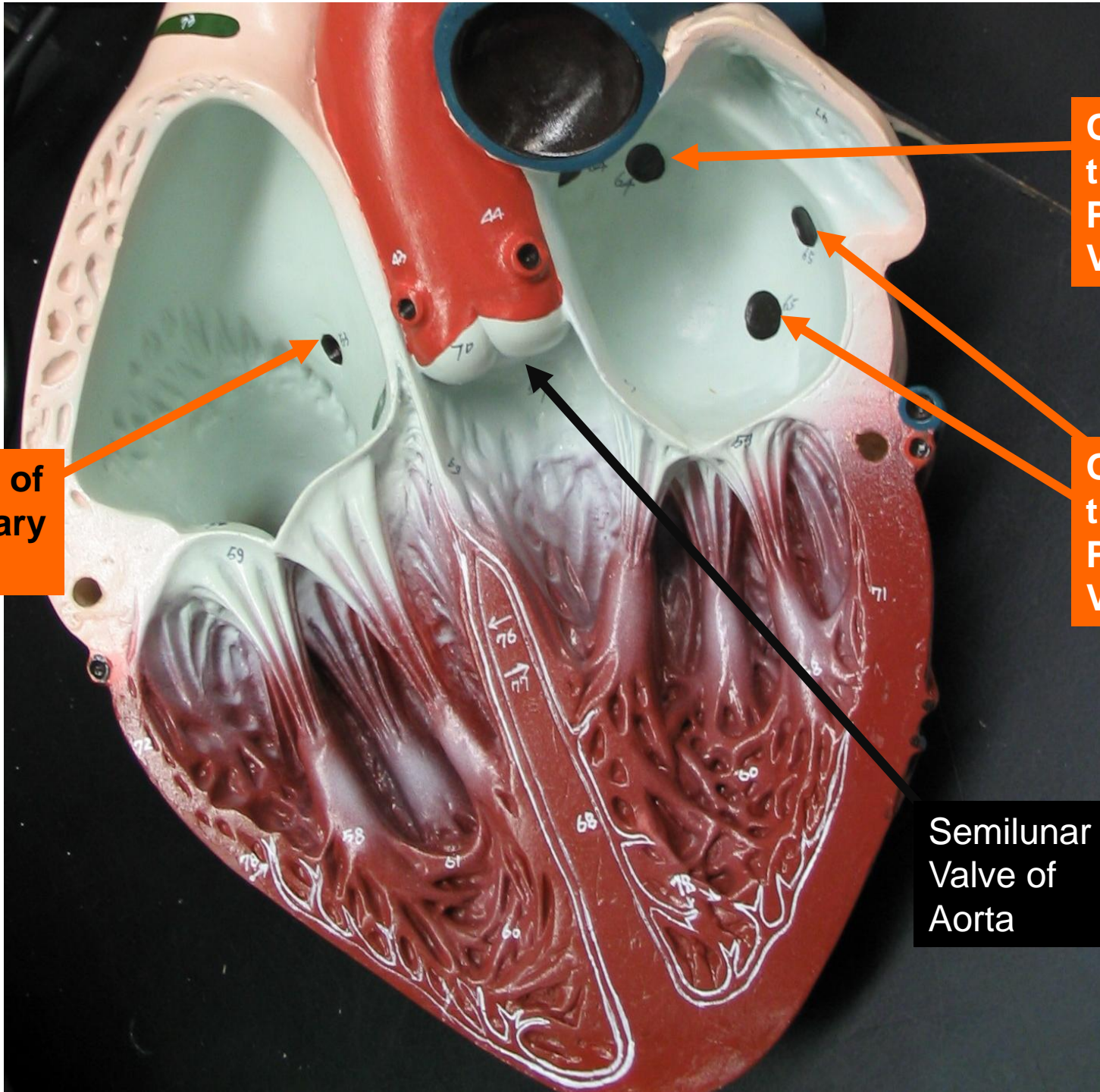
Trabeculae Carneae

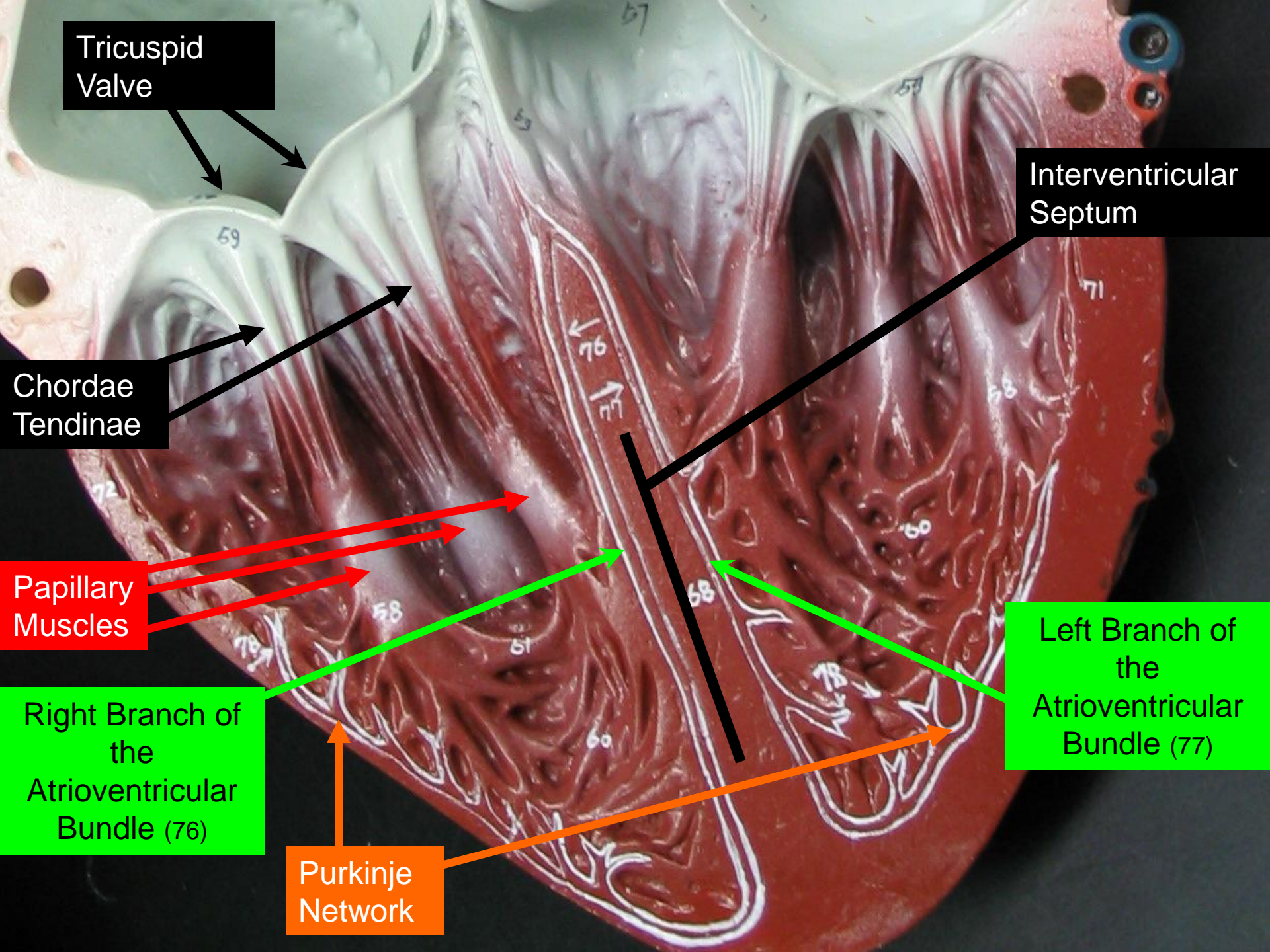
**Orifice of  
Coronary  
Sinus**

**Orifices of  
the Right  
Pulmonary  
Veins**

**Orifices of  
the Left  
Pulmonary  
Veins**

**Semilunar  
Valve of  
Aorta**





Tricuspid Valve

Interventricular Septum

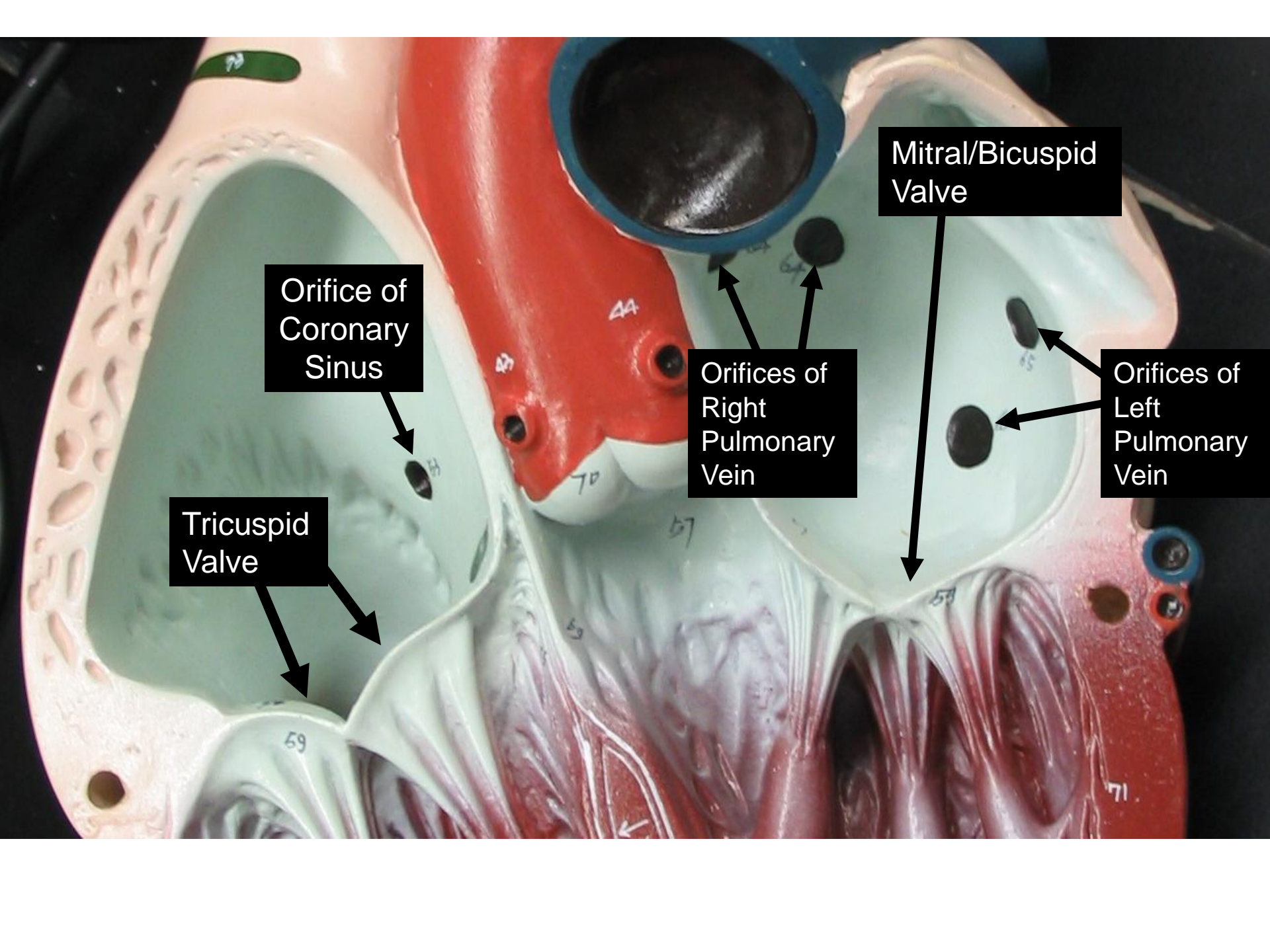
Chordae Tendinae

Papillary Muscles

Right Branch of the Atrioventricular Bundle (76)

Purkinje Network

Left Branch of the Atrioventricular Bundle (77)



Orifice of  
Coronary  
Sinus

Tricuspid  
Valve

Orifices of  
Right  
Pulmonary  
Vein

Mitral/Bicuspid  
Valve

Orifices of  
Left  
Pulmonary  
Vein

Sinoatrial Node (S.A.)

Orifice of Superior Vena Cava

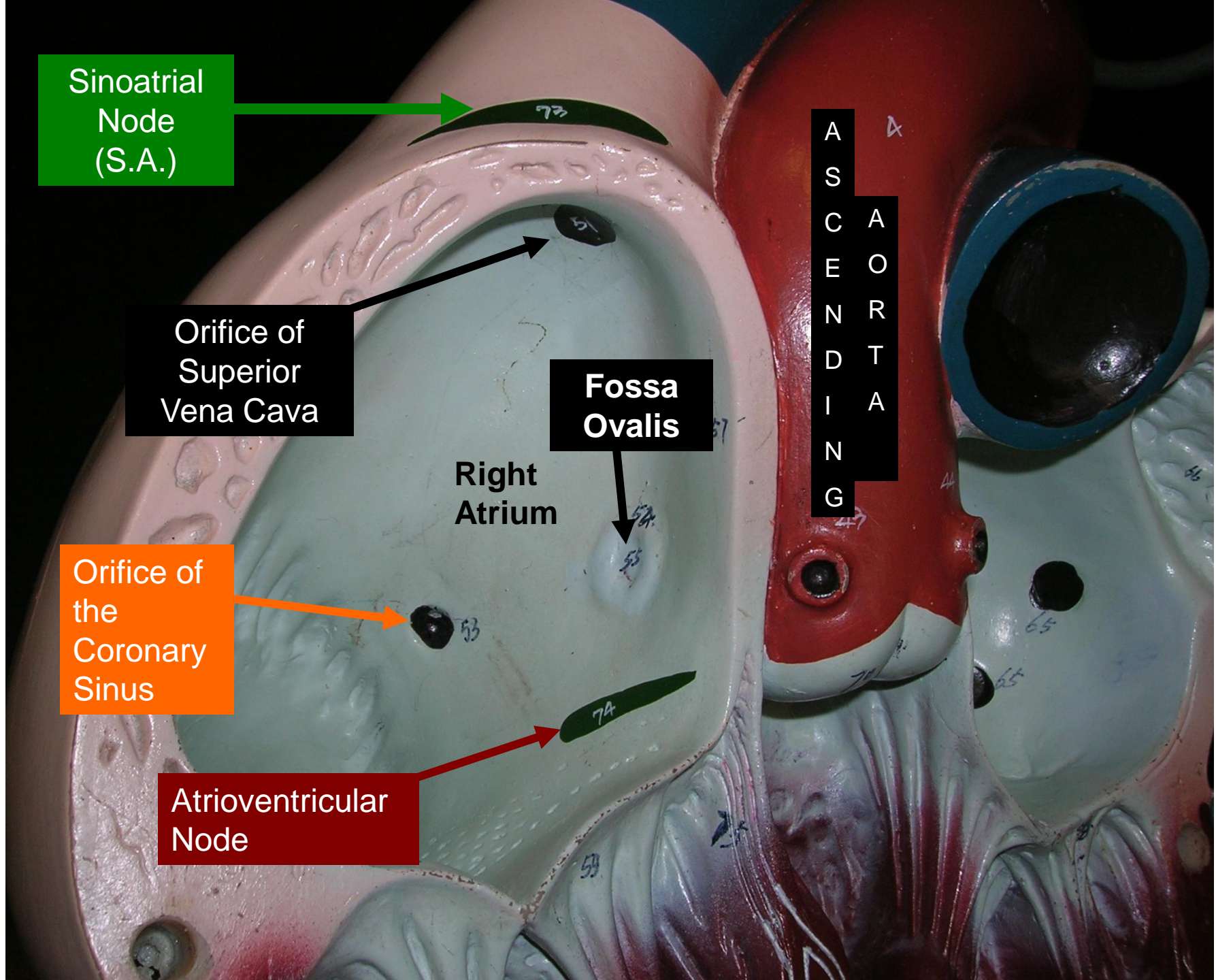
Fossa Ovalis

Right Atrium

Orifice of the Coronary Sinus

Atrioventricular Node

A  
S  
C  
E  
N  
D  
I  
N  
G





Sinoatrial Node

Atrioventricular Node

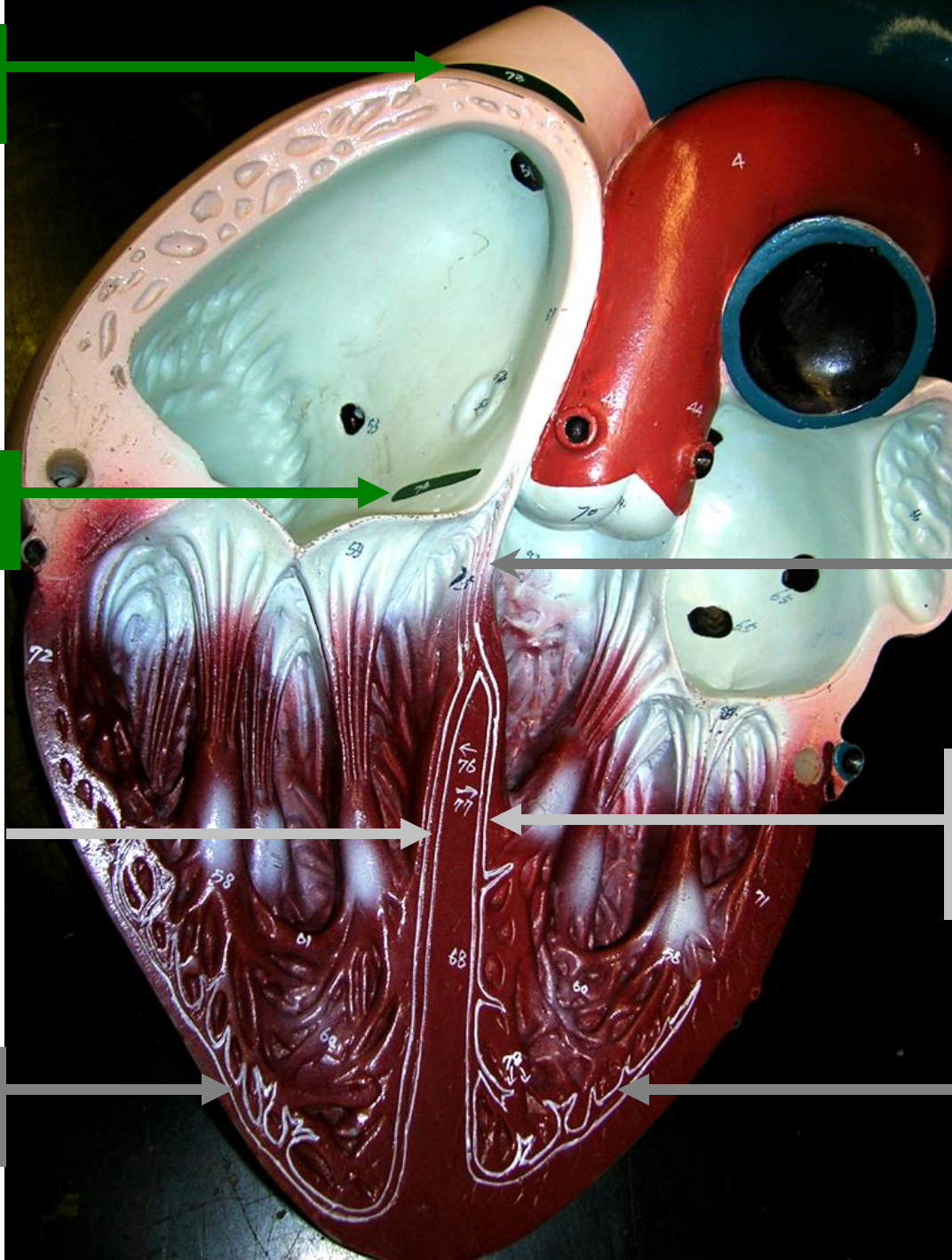
Atrioventricular Bundle  
(Bundle of His)

Right Bundle Branch

Left Bundle Branch

Purkinje Fibers

Purkinje Fibers



Left Branch of Pulmonary Artery

Right Branch of Pulmonary Artery

Left Pulmonary Veins

Right Pulmonary Vein

Oblique Vein

Coronary Sinus

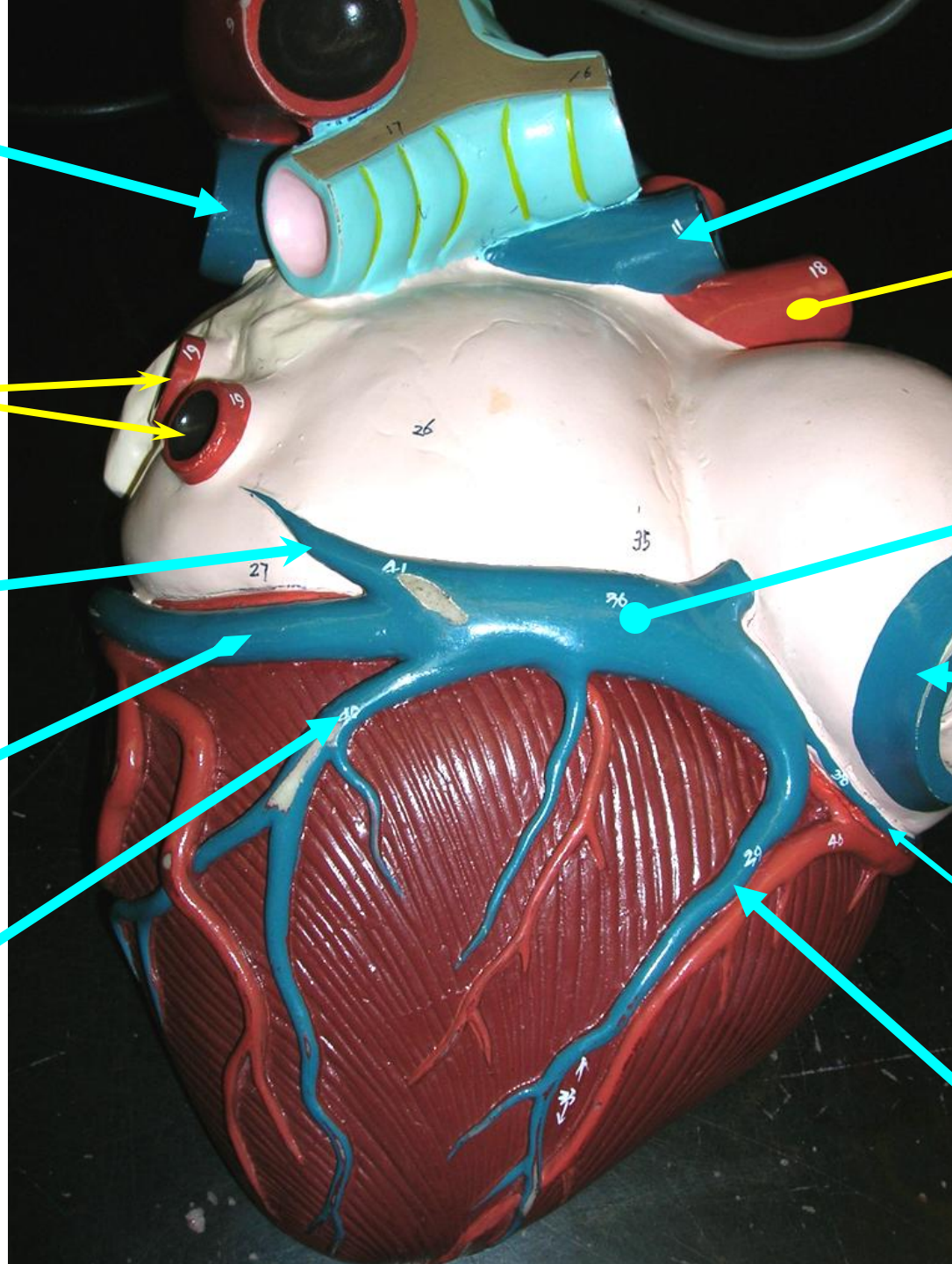
Great Cardiac Vein

Inferior Vena Cava

Posterior Vein of the Left Ventricle

Small Cardiac Vein

Middle Cardiac Vein



**Anterior  
Cardiac  
Veins**

**Pulmonary  
Trunk**

**Left  
Coronary  
Artery**

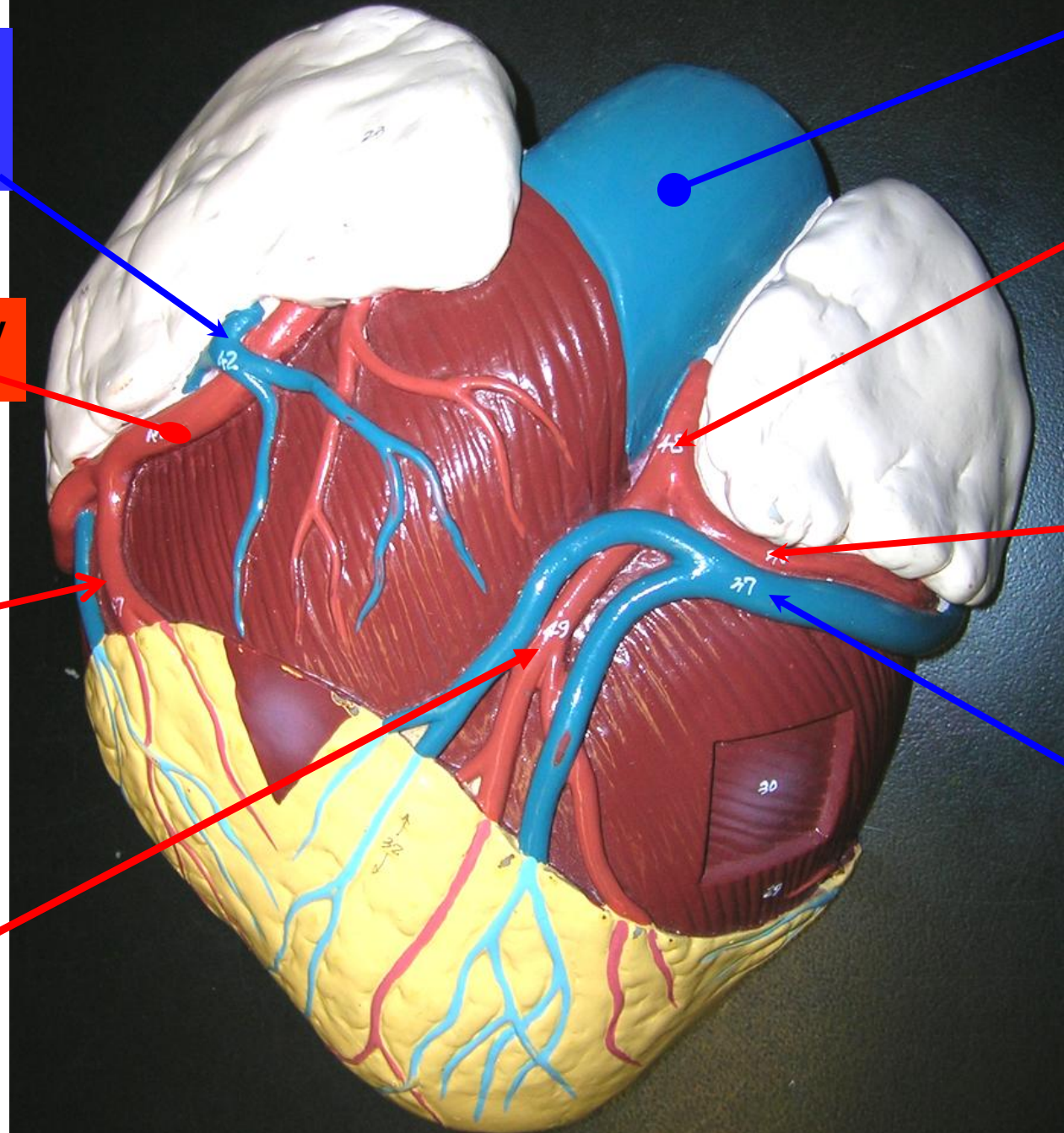
**Circumflex  
Branch of  
Left  
Coronary  
Artery**

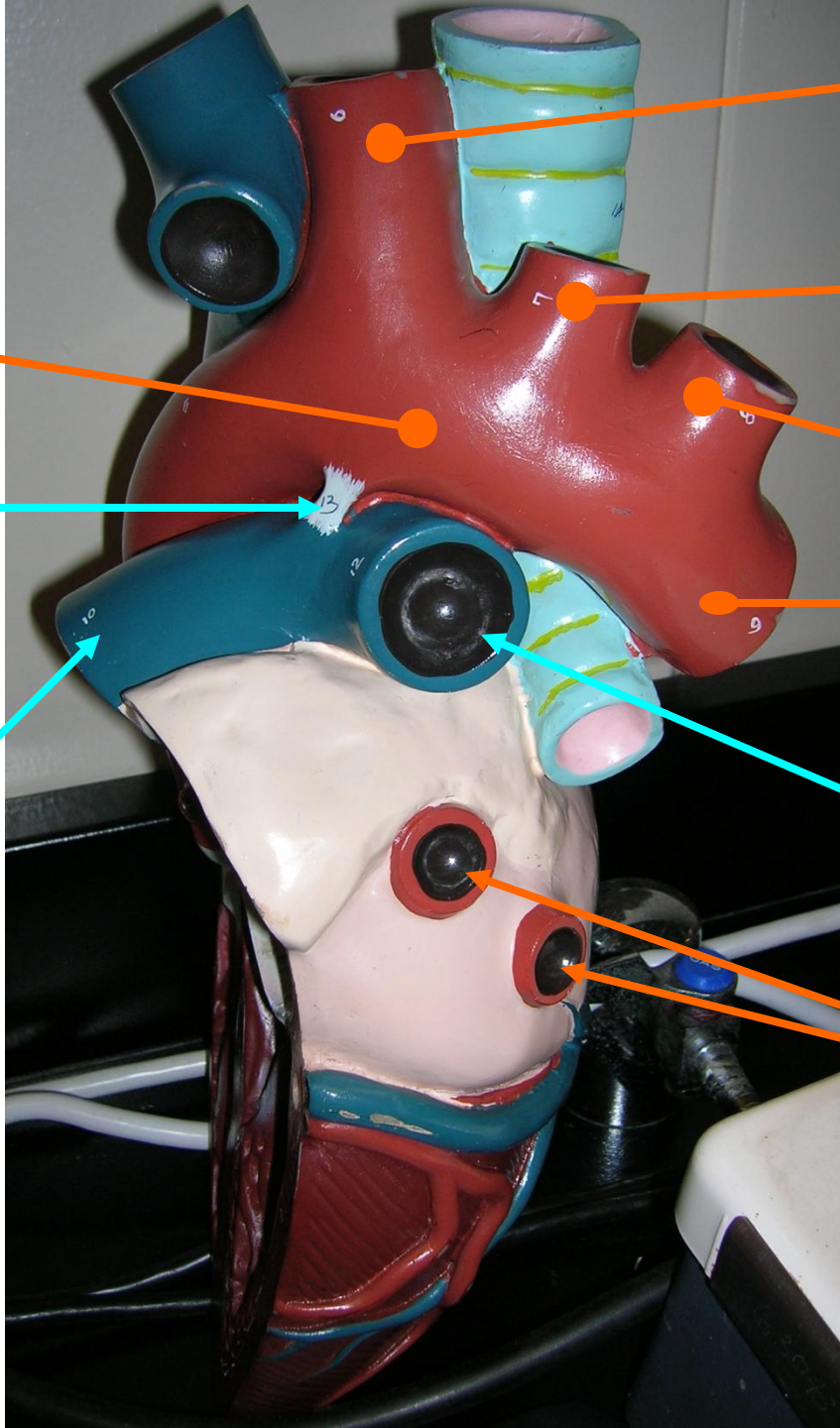
**Great  
Cardiac  
Vein**

**Right Coronary  
Artery**

**Marginal  
Branch of  
Right  
Coronary  
Artery**

**Left  
Anterior  
Descending  
Coronary  
Artery**





Brachiocephalic Trunk  
(Innominate artery)

Left Common Carotid Artery

Left Subclavian Artery

Descending Aorta

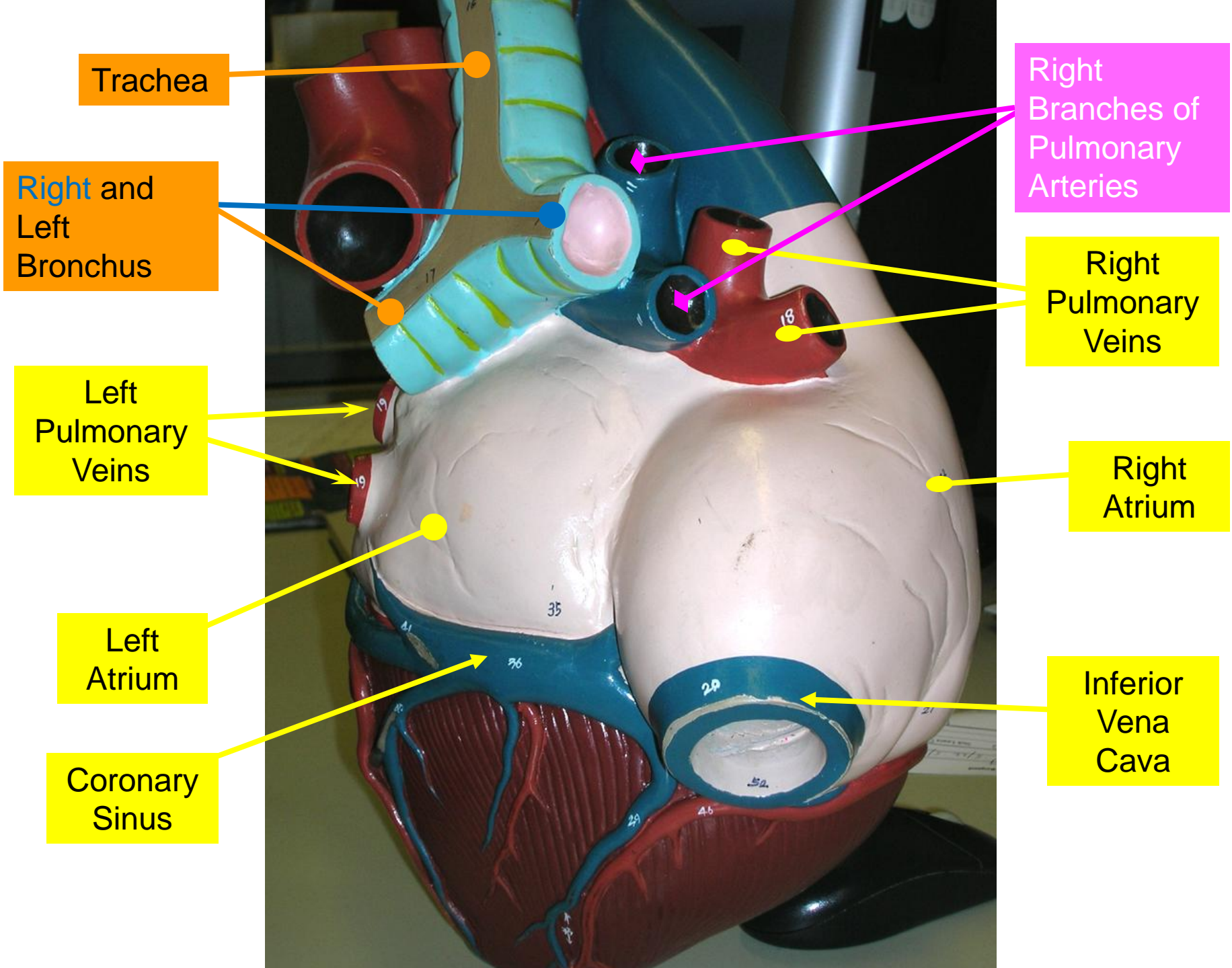
Left Branch of Pulmonary Artery

Left Pulmonary Veins

Arch of Aorta

Ligamentum Arteriosum

Pulmonary Trunk



Trachea

Right and Left Bronchus

Left Pulmonary Veins

Left Atrium

Coronary Sinus

Right Branches of Pulmonary Arteries

Right Pulmonary Veins

Right Atrium

Inferior Vena Cava

Right  
Auricle

Pulmonary  
Trunk

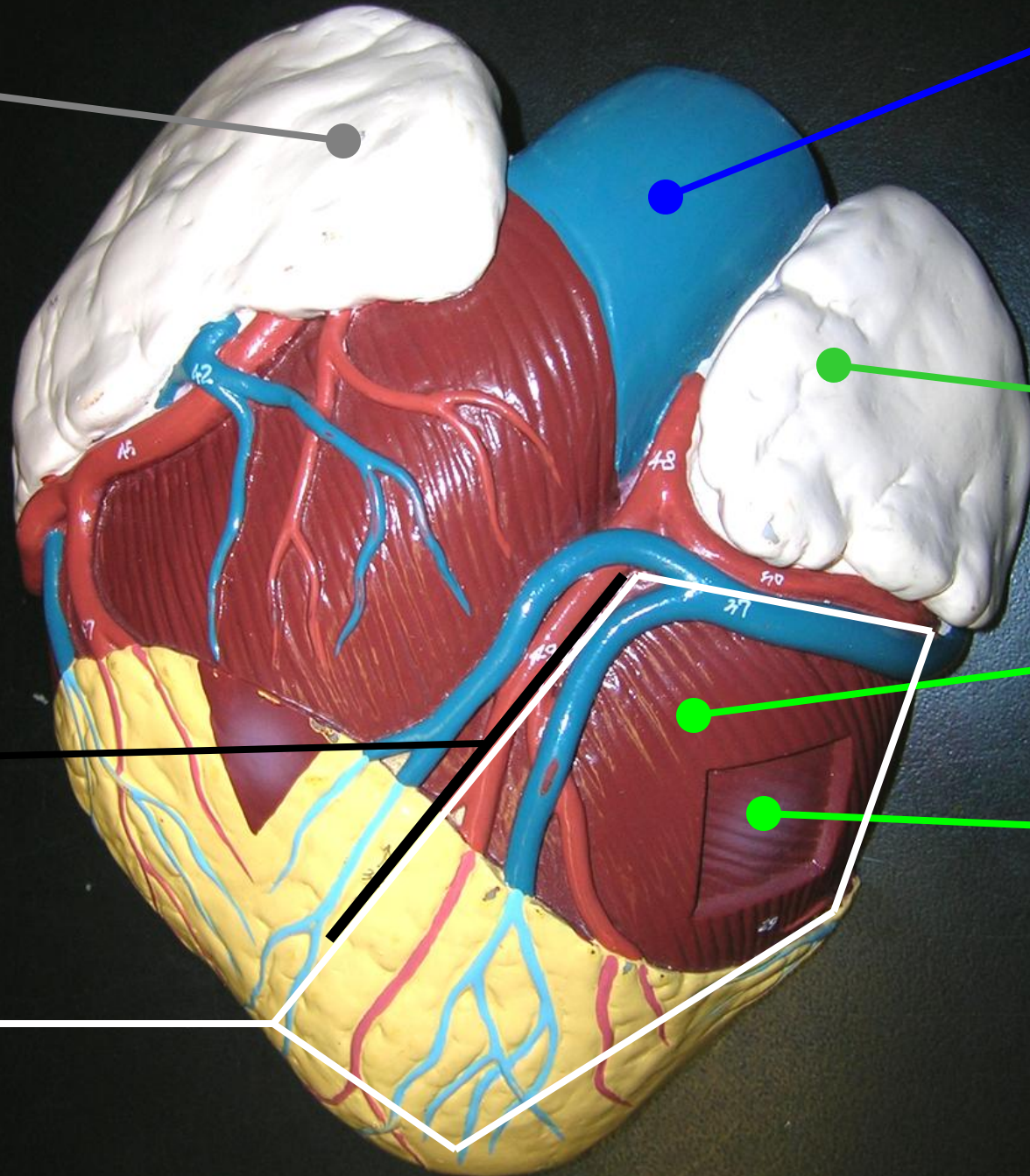
Left  
Auricle

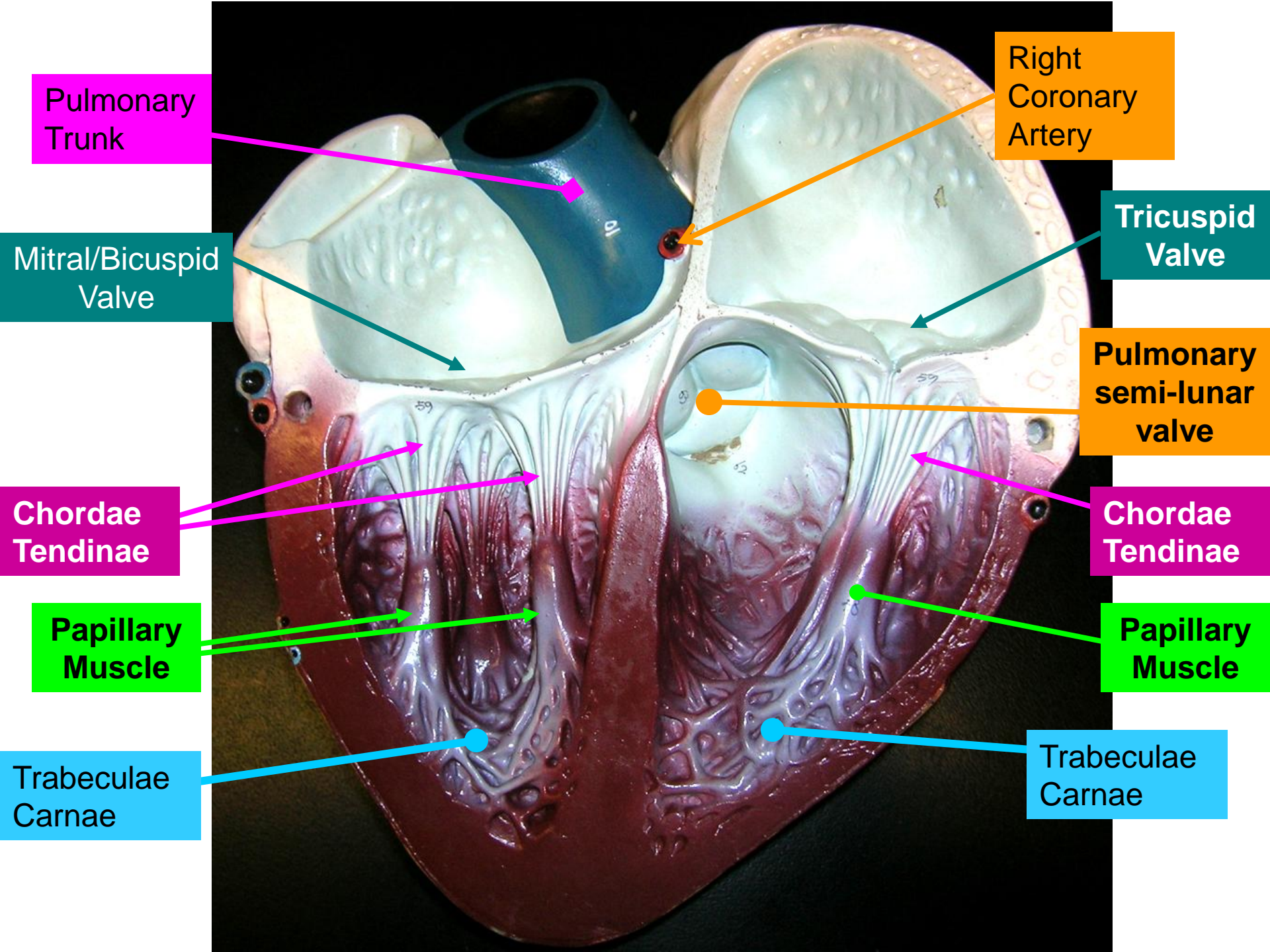
Superficial  
Muscle of  
Left Ventricle

Deep Muscle  
of Left  
Ventricle

Anterior  
Longitudinal  
Sulcus

Left  
Ventricle





Pulmonary Trunk

Right Coronary Artery

Mitral/Bicuspid Valve

Tricuspid Valve

Pulmonary semi-lunar valve

Chordae Tendinae

Chordae Tendinae

Papillary Muscle

Papillary Muscle

Trabeculae Carnae

Trabeculae Carnae