



# April 2019 Product Update

## “SZ-LoT311 3Pin Mini NEMA Lamp Controller “

4G Gateway HARVARD Technology

Driver kit Direct Replacement ,

Direct Replacement LC Kit for LeafNut

Following the recent administration of “Harvard Technology Ltd” (The Company) leaving many Local Councils and Authorities with a non-operational CMS (Central Management system) and loss of connection from Client Street Lighting assets and their Servers, Prime One has moved quickly to develop an alternative direct replacement Lamp Controller, Central 4G Gateway and a range of Drivers and Ballast to replace this now obsolete system “LeafNut”

*Leaf Nut obsolete Hardware Photo:*





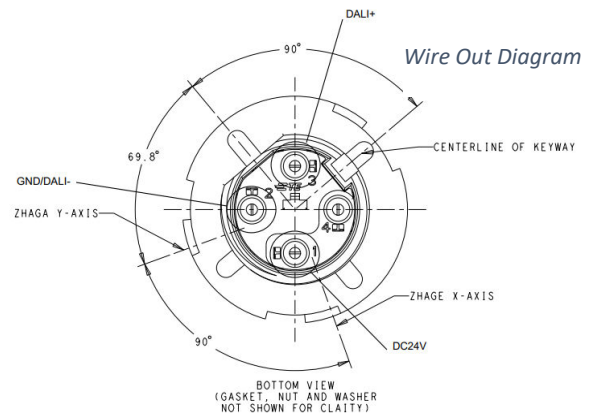
Prime One LTD: specialist innovator of street lighting photocells and smart street lighting solutions, has been listed in the SR (Sensor Ready) Certified Partner Program, recently launched by Philips Lighting. The SZ-LoT311 photocell joins a list of SR Certified products available today.

The Program has been set up to ensure system component interoperability and to drive the adoption of universal standards throughout the street lighting industry. SR Certification gives Original Equipment Manufacturers (OEMs) confidence that products with the Sensor Ready (SR) logo have undergone the due diligence required to comply with relevant specification and ensures compatibility with connected lighting solutions

*SZGRS13C 4G Gateway replacement*



*SZ-LoT311 LC replacement unit*



	Item	Parameter Values	Remarks
1	IP Grade	IP65	
2	Wireless Frequency	2.4G	
3	Product output	DALI2.0 protocol	
4	Transmission Distance	800 meters	(between the nodes in line of sight)
5	Data Collection	U,I,P,Q,COSΦ	
6	Antenna Frequency Band	2.4G	
7	Antenna Gain	3DB	
8	Antenna Standing Wave	≤2.0	
9	Antenna Type	built-in	



SZ-Lot311 has been designed to meet SR Certification and is interoperable with the Philips Xitanium driver; it controls street lighting illumination by sending signals to the driver, using microprocessor technology. The photocell module offers sensory inputs while also communicating with other luminaires in a network - only made possible through the SR driver. This enhances lighting control and DALI data exchange.



*SR LED Philips Drivers*

*Other SR Drivers available*

This Xitanium Sensor Ready driver is ideally suited for connected systems and can be combined with SR-certified components. The driver is designed for rugged applications such as outdoor and industry, for easy integration it has 2 power supplies (SR and 24V auxiliary supply), accurate energy metering and diagnostics.

12NC: 929001573706

EOC: 871869673918100



An energy saving photocell, the SZ-LOT311 has been optimised with design features for the latest generation of LED luminaire solutions. It works within an ecosystem of components to deliver harmonious functionality, installation and upgrade solutions; delivering an industry standard that will help drive the adoption of intelligent street lighting products and systems.

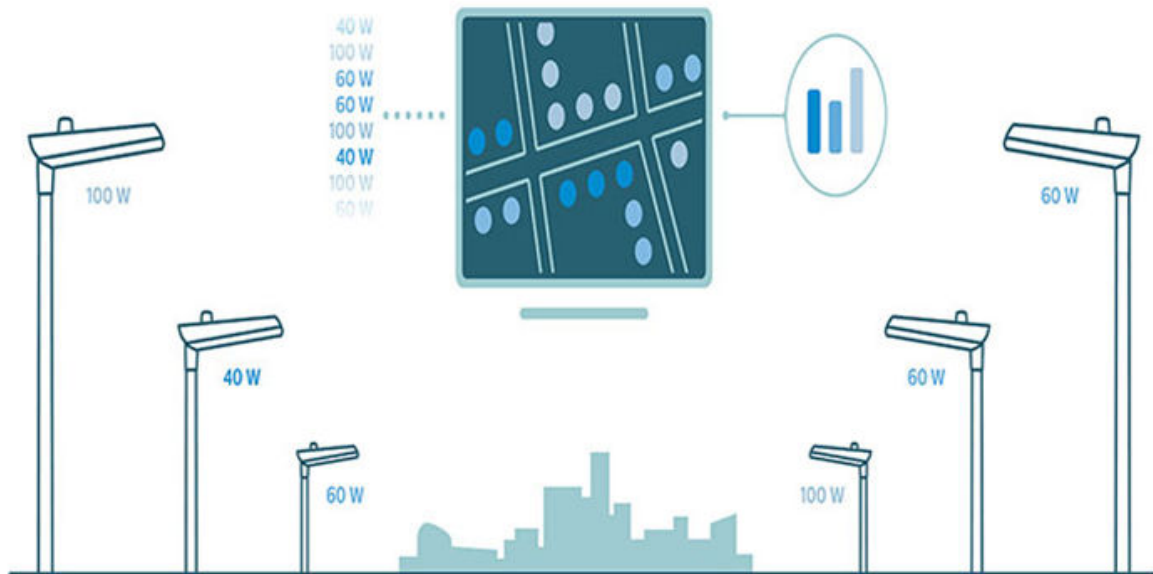
If you are effected by the system outage provided by Harvard Technology Ltd, then we would like to hear from you so we can arrange a one to one meeting and offer some of our products to overcome this current problem many authorities are currently experiencing



## Support and Training

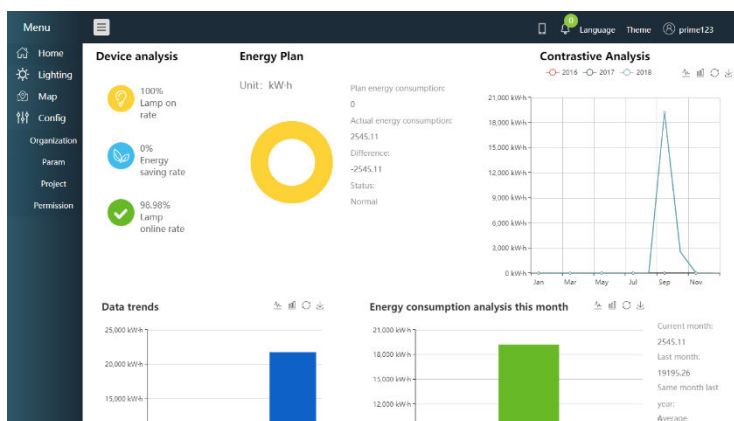
Prime One has been supplying the industry with Central Management Systems (CMS) for past 8 years and with 30 years experience in Street Lighting Maintenance are able to offer solutions for our existing and new Clients

We are not just a hardware and Software provider, but also offer front line engineers to address

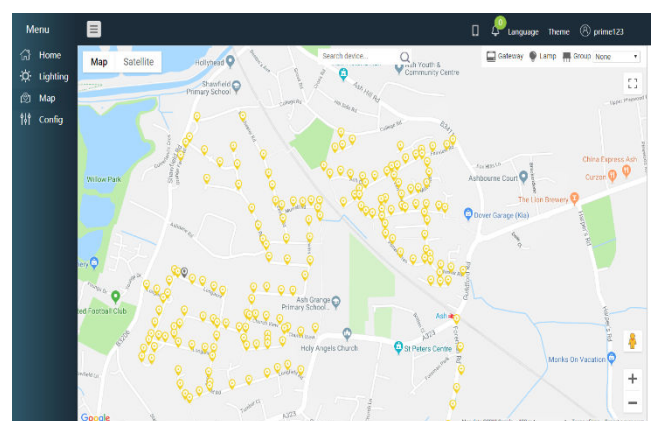


1. Training and Support of the Product Range and training the local term Lighting Contractors
2. Internal Lighting installers to perform Installation of the Product on a large scale
3. Assist with IT Support for Server Deployment to connect the sited Gateways to Local Offices
4. Site Engineer Visits to assist Local Lighting Contractors
5. Training Clients on the CMS Lighting Platform and provide IT support
6. Clients can contact our 24/7 Support Line

*CMS GIS Mapping Light Positions*



*PRIME ONE CMS Home Page*





Our Contact Details to arrange a meeting / Demonstration of our Product Range

Prime One Maintenance LTD

PDW House

17 Court Tree Drive

Eastchurch

Kent

ME12 4TR

TEL: 01795 342100

Email [info@prime1.co.uk](mailto:info@prime1.co.uk)