

SAMANTHA POPE CREATIONS

NEWSLETTER

VOLUME 52 JANUARY 2014

Happy New Year!

last year has been inspirational visually with movies The Great Gatsby and Catching Fire/The Hunger Games both having amazing costumes of colour, texture and sparkle to wet the appetite. As a result the SALA exhibition I am working towards with David, my photography friend has a wearable art work inspired by "Katniss Everdene: the girl on fire". It is a neck piece/cape made from faux leather and red sequinned fabric that encircles the throat in pointed strips of boned fabric. It also has black zips with silver metal teeth and stitching. David has a very talented make up artist to do amazing hair and make up, Maddie Millward from Mad Maddie's Makeup on the model who will wear this creation.

If you are looking for a small gallery space this year you can hire the Studio Gallery featured exhibition space. It can be hired for 5 weeks for only \$150. It is perfect for small groups or solo artist as it is easier to fill a smaller space than be overwhelmed by a huge area. If you have never had your own exhibition then bookings are available for this year.

I have booked flight to Canberra for the Creative Textile show in May and I can't wait!

The Sala website www.salainc.com.au has a free artist portfolio feature, you can build a portfolio page with images. The images from the portfolio's slideshow while people are looking at the website for info on SALA so it is a good way to expose your creativity. Viewers can click the image to see the artist info or look up and artist or specific medium.

I have been making cute felt brooches with my Accu Quilt Go Baby fabric cutter. Using the Rose of Sharon die to cut out stiffened felt in bright colours. Adding hand embroidery and beading for a colourful finish. \$8 each at MB Studio Gallery.

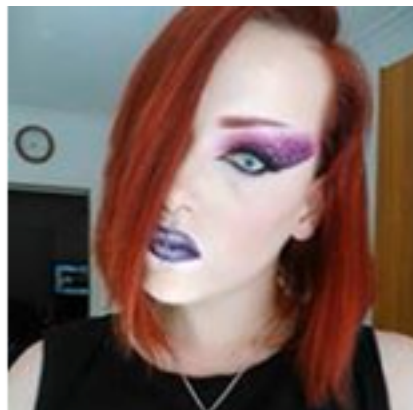
Don't forget the Studio Gallery Summer School, it's great value for a 5 day workshop which includes tuition AND materials!



concept drawing



assembly



Maddie Millward



felted brooches

2014 Diary Dates

Workshops Exhibitions FAN Events

January

13 - 17 Summer School at Murray Bridge Studio Gallery. \$250 for 5 days including materials and tuition with Elisabeth De Koke: twisted printing, Selena Smith: messing about with paint and Kathleen Munn: art drawing. full details goto www.murraybridgestudiogallery.com workshops.

February

10th Fibre Artist Network 7pm start.

27 Feb – 16 March Handspinners and Weavers Guild of South Australia Fringe Exhibition, open to the public on Wed, Thurs, Sat & Sun. All members can participate. Little Glory Gallery is the venue 196 South Road, Mile End SA.

21st Embellished Art Quilt. Melanns Fabric's & Sewing Centre, Dernancourte. 9.30 - 3pm, \$85 including kit. It's a small art quilt with silk background needle felted texture, net and yarn flowers, silk leaves and embroidery. It's made up of a variety of embellisher elements. It has bobbin work embroidery & braids made from silk fibres. www.melanns.com.au for bookings (sample right).

May

2-4 CREATIVE TEXTILE SHOW: Fibre-art-Mixed Media, at the National Convention Centre Canberra. Organised by Expertise Events.

www.creativetextileshow.com.au

12th Fibre Artist Network 7pm start.

August

SALA Festival August 1- 15 Image•In Tech•Styles by Photography by David & Samantha Pope Creations.

11th Fibre Artist Network 7pm start.

November

13 – 16 Quilt & Craft Fair, Adelaide Event & Exhibition Centre (Adelaide Showgrounds)

10th Fibre Artist Network 7pm start.

FAN (fibre Artist network) Meetings are usually held at Marden Senior College, Marden Road, Marden (Adelaide) in the Art Room, 6:30pm open; 7pm start. Cost of \$3 per person. Plenty of parking available.

VIVA PAPER TOWELL the unsung result of mixed media collage

When I create anything with paint involved I always clean up using Viva brand paper towels. Why you ask? because often the towel produces a better background for artwork by accident than when I try to plan it. The absorbency and strength of Viva mean the dried towel perfect to add freehand machine embroidery and embellishments to.

You can iron Vlisofix or interfacing to the back to stabilise it, tear it up and collage it, cut out shapes, stencil, draw and add more patterns.

I use my stash as the background for small window gift cards which have other decoration and stitching over the top, I also cut out flowers from the towel to make delicate designs.



Clean dirty brushes and palettes with dry or damp towel. Squidge it in your hand to blend colours. If using metallic paint, dab a coloured towel onto the palette for excellent highlights. Don't plan the colours just clean them up and let the magic happen! see more at

spopecreations.blogspot.com.au

WWW.SAMANTHAPOPECREATIONS.COM

