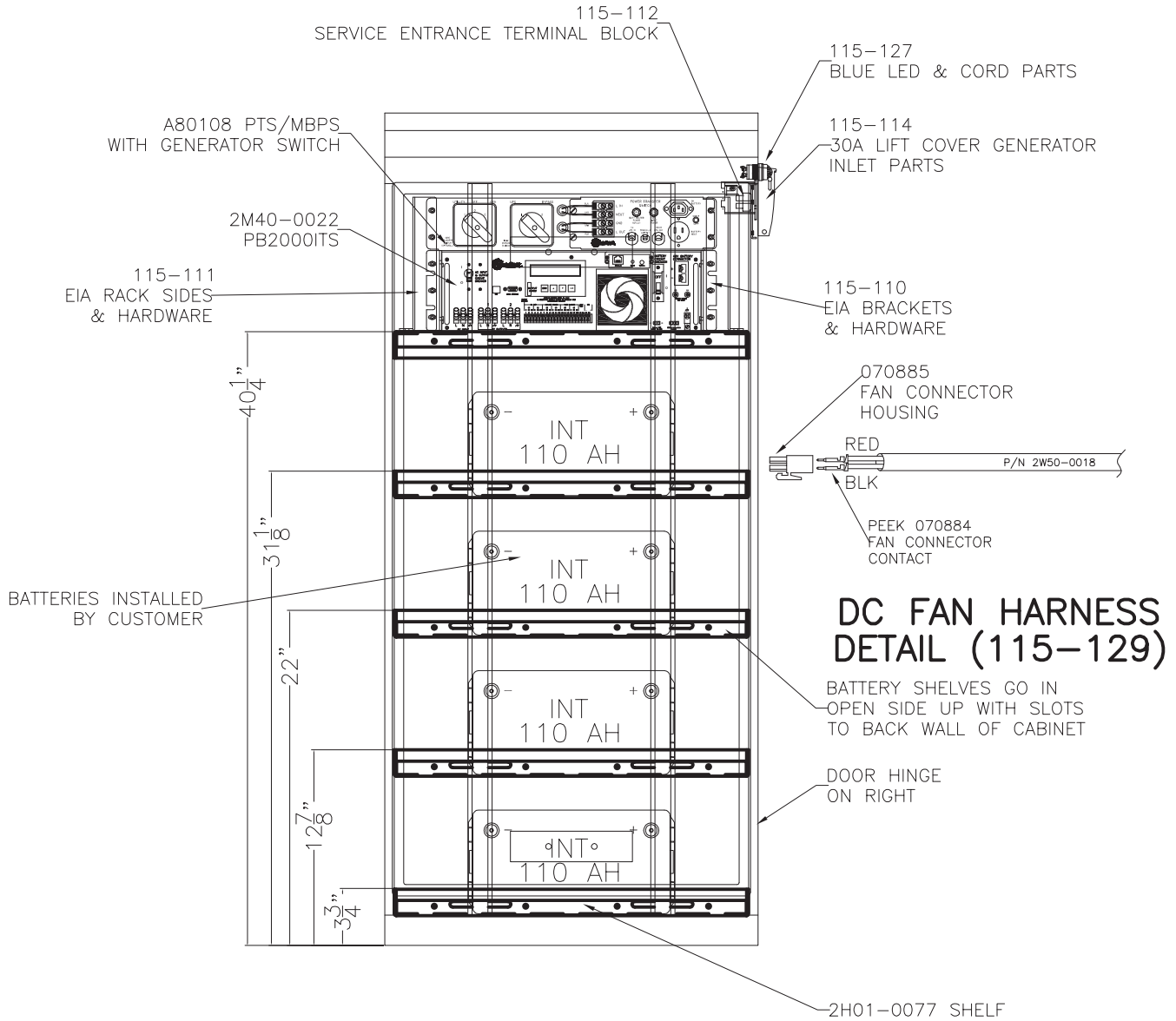


FRONT VIEW



APPROVALS		DATE
DRAWN BY	VR	07-08-09
CHECKED BY	BB	07-08-09

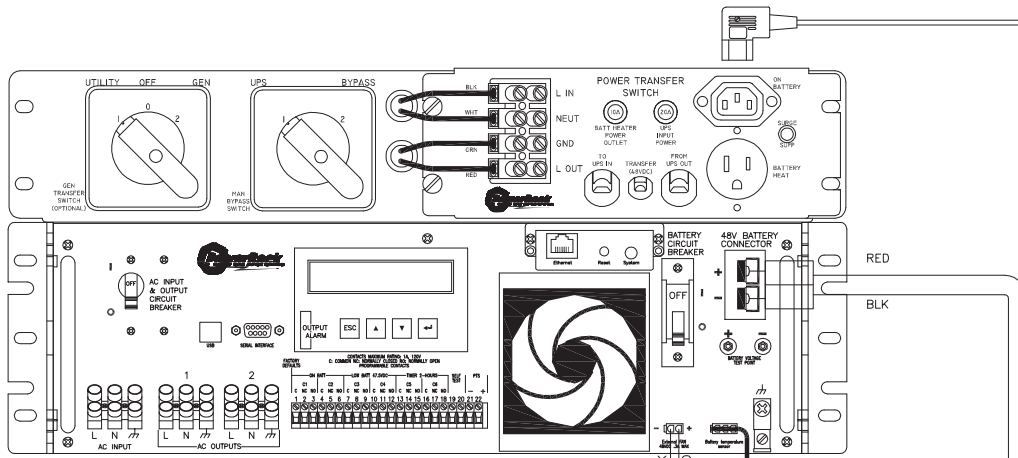
PEEK 2906 CORPORATE WAY
PALMETTO, FLORIDA 34221, USA

TITLE: **BC100HZG CAB, PB2000ITS-ETHERNET, ITS/MBPS, & NO BATT HEATERS**

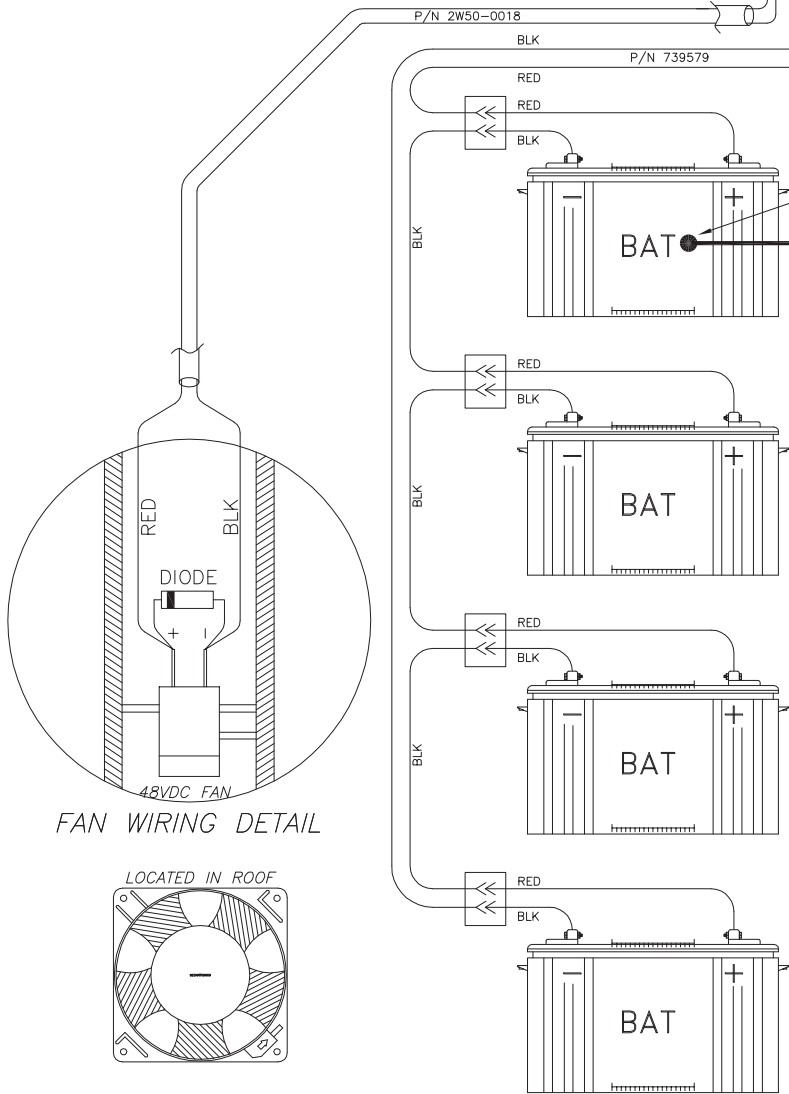
ANSI A DRAWING NO. **5200#15774** SHT 2 OF 10

This document and the information it contains are the property of PEEK and are proprietary and confidential to PEEK. Any unauthorized publication, copying, use, reproduction, disclosure, or dissemination of the document or information by any means (including electronic means) is prohibited.

ON BATTERY INDICATOR

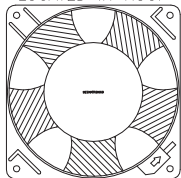


TEMPERATURE PROBE MUST BE ATTACHED TO TOP BATTERY WITH SILICONE SEALANT FOR PROPER FAN ON / OFF OPERATION.



FAN WIRING DETAIL

LOCATED IN ROOF



APPROVALS		DATE
DRAWN BY	VR	07-08-09
CHECKED BY	BB	07-08-09

**2906 CORPORATE HWY
PALMETTO, FLORIDA 34221, USA**

<p>TITLE: BC100HZG CAB, PB2000ITS-ETHERNET, ITS/MBPS, & NO BATT HEATERS</p>	<p>This document and the information it contains are the property of PEEK and are proprietary and confidential to PEEK. Any unauthorized publication, copying, use, reproduction, disclosure, or dissemination of the document or information by any means (including electronic means) is prohibited.</p>
ANSI A	DRAWING NO. 5200#15774
SHT 5 OF 10	