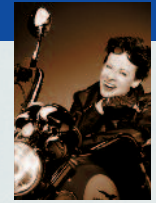


SR Vivodent® PE
SR Orthotyp® PE



Beauty

'I don't care about money or prestige! Real beauty has nothing to do with it. It's hidden in the many layers of your personality. This natural beauty is revealed in a cheerful smile, sparkling eyes or even in the expression of anger or sadness. If you respect and look after yourself, you'll respect your feelings.'

*My
Teeth*

SR Vivodent® PE

As complex as
perso

*M
Te*



The natural appearance of SR Vivodent PE is enhanced by their pearly sheen. Natural enamel layers, which impart strength and elasticity, are fully copied from natural teeth in a complex structure. The materials used in the four layers are the result of extensive research and development. This superior material is suitable for fabricating complete and partial dentures. These pearly teeth have become very popular.

True-to-nature moulds

The SR Vivodent PE and SR Orthotyp PE tooth line is very versatile because of its wide range of moulds. The teeth readily adapt to the natural conditions in the mouth.

- Characteristic SR Orthotyp mould
- Wide variety of moulds
- Special posterior teeth for complete dentures
- Special moulds for normal bite, deep overbite, and crossbite situations
- True-to-nature tooth dimensions
- Authentic layered structure

Impressive aesthetics

The complex structure of four layers produces a lifelike iridescent effect.

The result is a precious pearly appearance.

- Large selection of shades
- Smooth cervical transitions
- Natural texture and incisal effects
- True-to-nature shading of layers
- Individualized characterizations

Special indications

- Hybrid dentures
- Complete dentures

Biocompatible material

SR Vivodent PE and SR Orthotyp PE teeth are based on the PMMA material. The biocompatibility of this high-performance material has been confirmed in toxicological examinations.

- Tissue compatibility
- Wear resistance
- Plaque resistance
- Permanence of shade



SR Orthotyp® PE

*the individual
nality*

*ly
th*

ent PE and SR Orthotyp PE is
ural teeth are made up of multiple
sticity. The different layers are faith-
omplex procedure. The high-quality
the shining result of many years of
rior multi-layered tooth line is
ybrid dentures. Over the years,
popular among patients.



SR Orthotyp posterior teeth – quality proven over many years

As the standards of aesthetics and function of artificial teeth have risen, so have the expectations regarding dentures. The Orthotyp posterior teeth from Ivoclar Vivadent are the successful result of many years of research and development. In his investigations, Dr Rainer Strack determined three basic bite types with different occlusal surfaces. The rows of pyramid-shaped cusps interlock and therefore allow teeth to cut and crush effectively. The pyramid

edges are slightly rounded to correspond to the natural shape and to ensure the proper functioning of teeth.

Special shades for complete dentures

The SR Vivodent PE shade guide has been specially developed for complete denture prosthetics. It facilitates the type-oriented determination of the correct shade.

Characterization

Individual characteristics are applied to the teeth using the SR Chromasit Creative or SR Adoro materials.

Stratos 200 articulator

The tooth moulds and the position of the teeth must be correct in relation to the jaw movements of the patient. With the help of the articulator this information is transferred to the denture.

The Biofunctional Prosthetic System (BPS®)

Every BPS brand name denture is fabricated with coordinated quality products. The SR Vivodent PE / SR Orthotyp PE tooth line is an important part of this system. Ask your dealer for more information about BPS.

*As complex as the individual
personality*

SR Vivodent® PE SR Orthotyp® PE

Delivery forms

SR Vivodent PE

24 upper anterior moulds
8 lower anterior moulds

SR Orthotyp PE

Upper moulds

5 normal bite, 2 deep overbite
2 crossbite

Lower moulds

5 normal bite, 2 deep overbite,
2 crossbite



Physical values

Flexural strength (DIN 13'907)	120 MPa
Modulus of elasticity (DIN 13'907)	3'000 MPa
Vickers hardness HV 0,5/30 (Internal standard PV-324)	190 MPa
Brinell hardness BHN 36,5/30 (DIN 53'456)	170 MPa
Bond to heat-cure polymer (DIN 13'914)	130 MPa



CE 0123

The products should be used strictly according to the Instructions for Use. Liability cannot be accepted for damages resulting from failure to observe the Instructions of the manufacturer. The user is responsible for testing the products for their suitability and use for any purpose not explicitly stated in the Instructions. Descriptions and data constitute no warranty of attributes and are not binding.

Printed in Liechtenstein
© Ivoclar Vivadent AG, FL-9494 Schaan/Liechtenstein
561302/0703/e/3/BVD

Ivoclar Vivadent AG
Bendererstr. 2
FL 9494 Schaan
Principality of Liechtenstein
Phone: +423 / 23 53 535
Fax: +423 / 23 53 360
www.ivoclarvivadent.com


ivoclar
vivadent®
passion vision innovation