



# LITE

**TYPICAL APPLICATIONS** Coffee machines

**FUNCTIONS** ■ SPST, illuminated or not  
■ DPST illuminated

**CYCLE No.** 50.000

**CUT OUT** 19x13 mm rear panel

**AMBIENT TEMPERATURE** 125 °C

**GWT** 850 °C

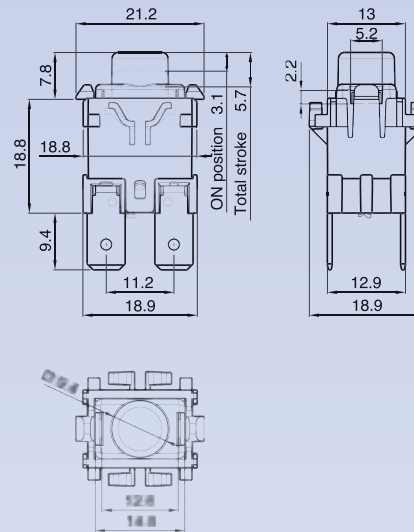
**GWT NO FLAME (<2sec)** 750 °C



L I T E ?

## DRAWING

1



?

## TERMINAL

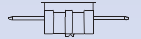
1 Vertical terminal  
6.3x0.8

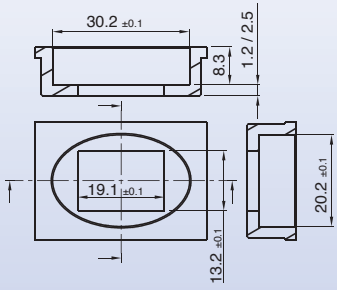


2 Vertical terminal  
4.8x0.8



A Horizontal terminal  
6.3x0.8





	DRAWING	TERMINAL	AESTHETIC	FUNCTION	RATING	LENS COLOUR	LAMP COLOUR			
L								0	0	0

?	?	?	?	?	0	0	0
---	---	---	---	---	---	---	---

**AESTHETIC**

**A**

**FUNCTION**

**1**

**5**

**8**

**RATING**

**C**

16 (6) A / 250 VAC  
 12 (10) A / 250 VAC  
 8 (8) A / 250 VAC - 5E4  
 T125/55 °C  
 EN 61058

16 A - 125 / 250 VAC  
 1/2 HP - 125 VAC  
 3/4 HP - 250 VAC  
 T65 °C (T100 °C on demand)  
 UL 1054

**LENS COLOUR**

**L**

colourless

**LAMP COLOUR**

**0**

no lamp

**G**

red

**E**

green

**ACCESSORIES**



LITET1N0000



LITET1M0000



LITET1E0000



LITET1G0000

