

# DuROCK PUCCS EIFS

## Exterior Insulation Finish System for Low Rise Residential Construction



**CCMC No. 12969-R**

**DuROCK**

DuROCK **Polar Bear**  
joint treatment

DuROCK **Roller Bear**  
Moisture Barrier

DuROCK **Polar Bear**  
Moisture Barrier/Adhesive

PUCCS EPS Insulation with  
10mm Geometrically Defined  
Drainage Cavity (GDDC)

DuROCK Reinforcing Mesh  
embedded in Prep Coat

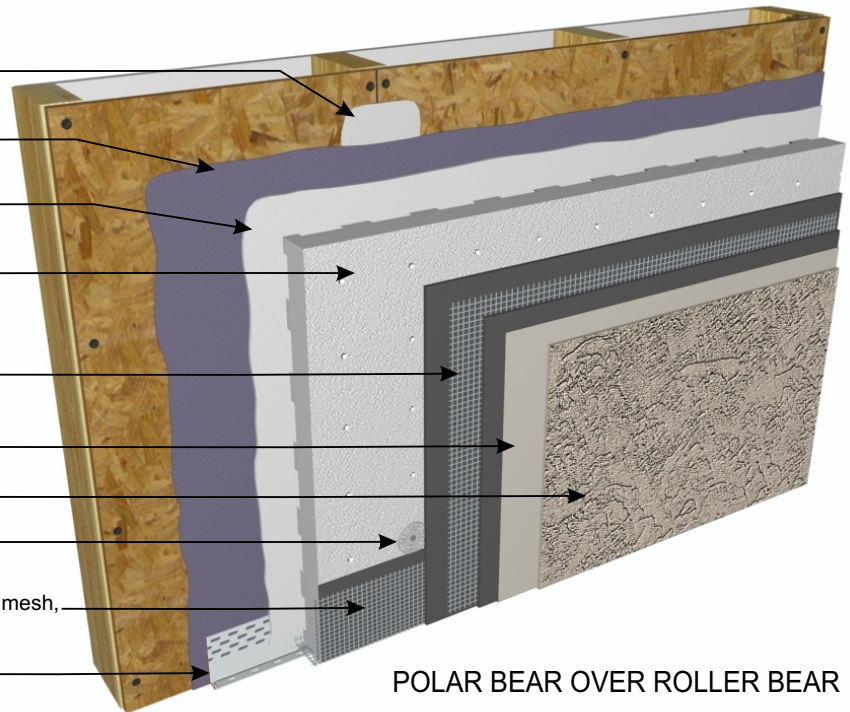
DuROCK Base Primer (optional)

DuROCK Finish Coat

DuROCK Mechanical Fastener

Wrap insulation edge with reinforcing mesh,  
terminate base coat at drainage track

DuROCK Uni-Track  
drainage track with lip

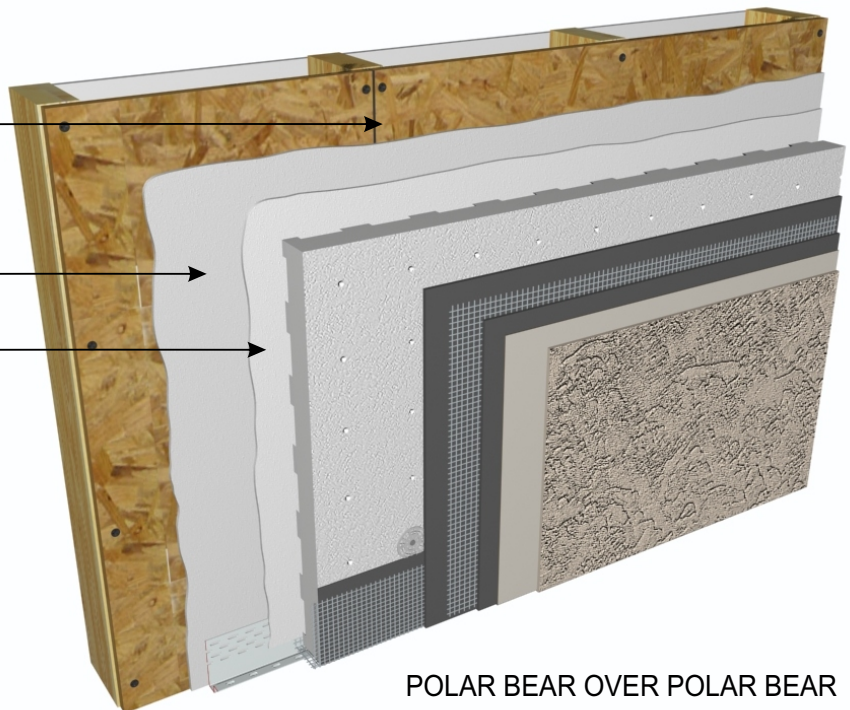


**POLAR BEAR OVER ROLLER BEAR**

No joint treatment required

DuROCK **Polar Bear**  
Air/Moisture Barrier

DuROCK **Polar Bear**  
Moisture Barrier/Adhesive



**POLAR BEAR OVER POLAR BEAR**

**Note:** For clarity of illustration  
all details depict Roller Bear as  
the first coat moisture barrier and  
Polar Bear as the second coat  
moisture barrier/adhesive.



Alfacing International Limited  
101 B.ROYTEC ROAD, WOODBRIDGE, ON, L4L 8A9  
TEL: (905) 856-0133, FAX: (905) 856-9654  
[www.durock.com](http://www.durock.com)

ARCHITECTURAL FINISHING SYSTEMS

This detail complements the corresponding system specification and illustrates the system configuration for the depicted construction. Visit [www.durock.com](http://www.durock.com) for the latest revisions and contact DuROCK for project-specific details to suit conditions other than those depicted. DuRock assumes no liability for the architecture, design, engineering, or workmanship of any project.

**PUCCS (LRRC)**

Last revise: Jan 2019

Issued: Mar 2006

**COVER**

# PUCCS LRRC

## ALTERNATIVE WINDOW ROUGH OPENING TREATMENT



**POLAR BEAR AIR/MOISTURE BARRIER  
ONTO WINDOW ROUGH OPENING**



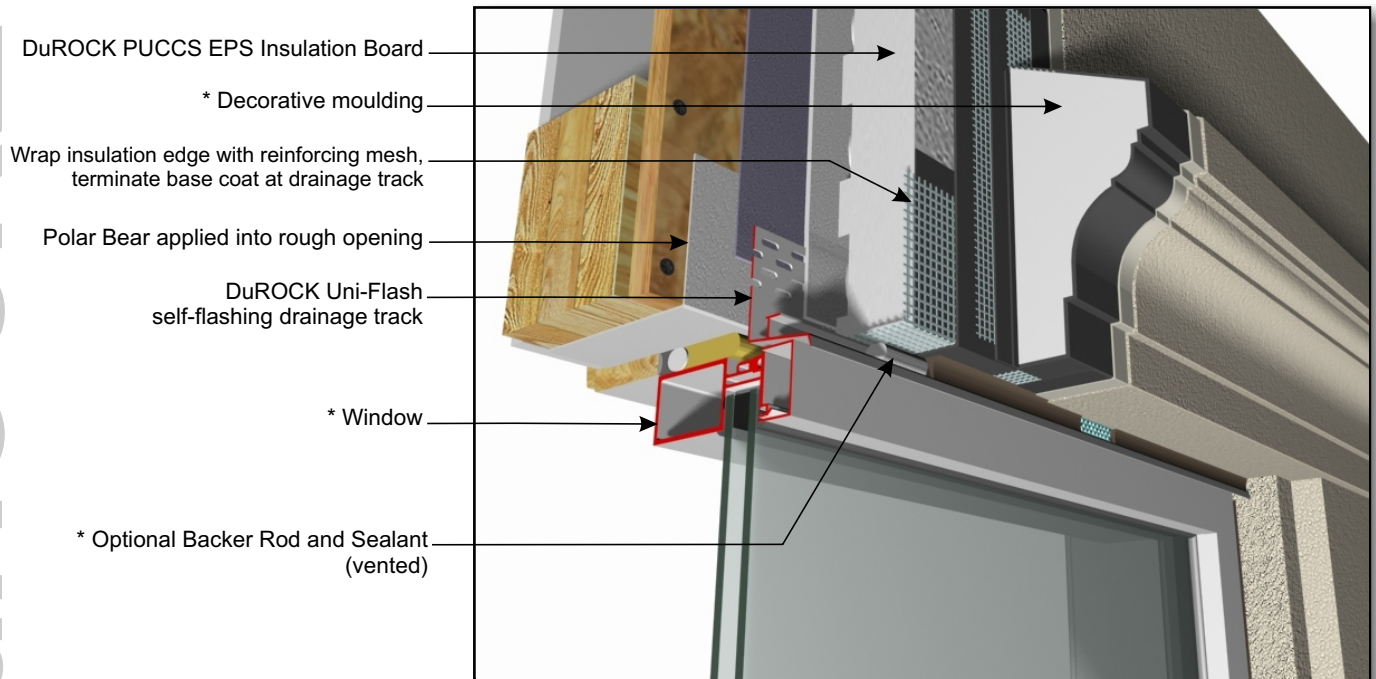
**SELF ADHERING MEMBRANE  
ONTO WINDOW ROUGH OPENING**

(For clarity of illustration all details depict Polar Bear only.)

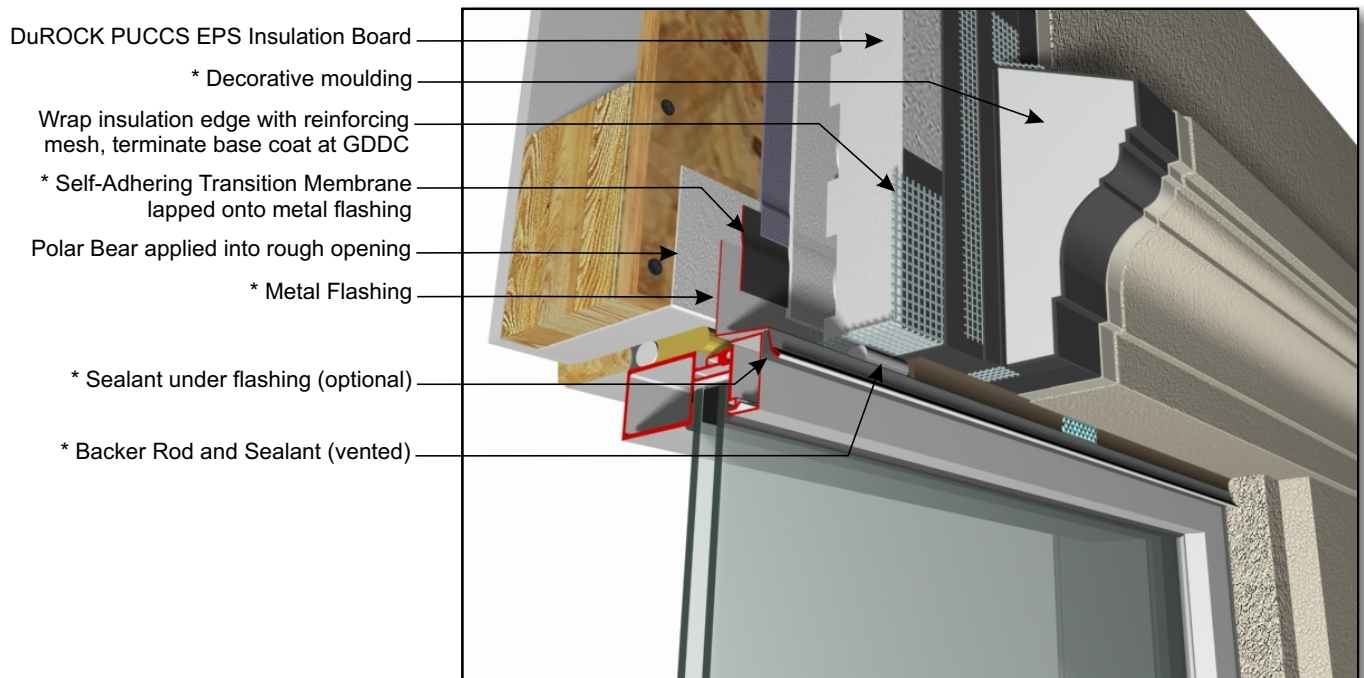
(\* by others)

# DuROCK PUCCS EIFS

## Exterior Insulation Finish System for Low Rise Residential Construction



**PUCCS LRRC (01)**  
WINDOW HEADER WITH DuROCK PVC UNI-FLASH



(\* by others)

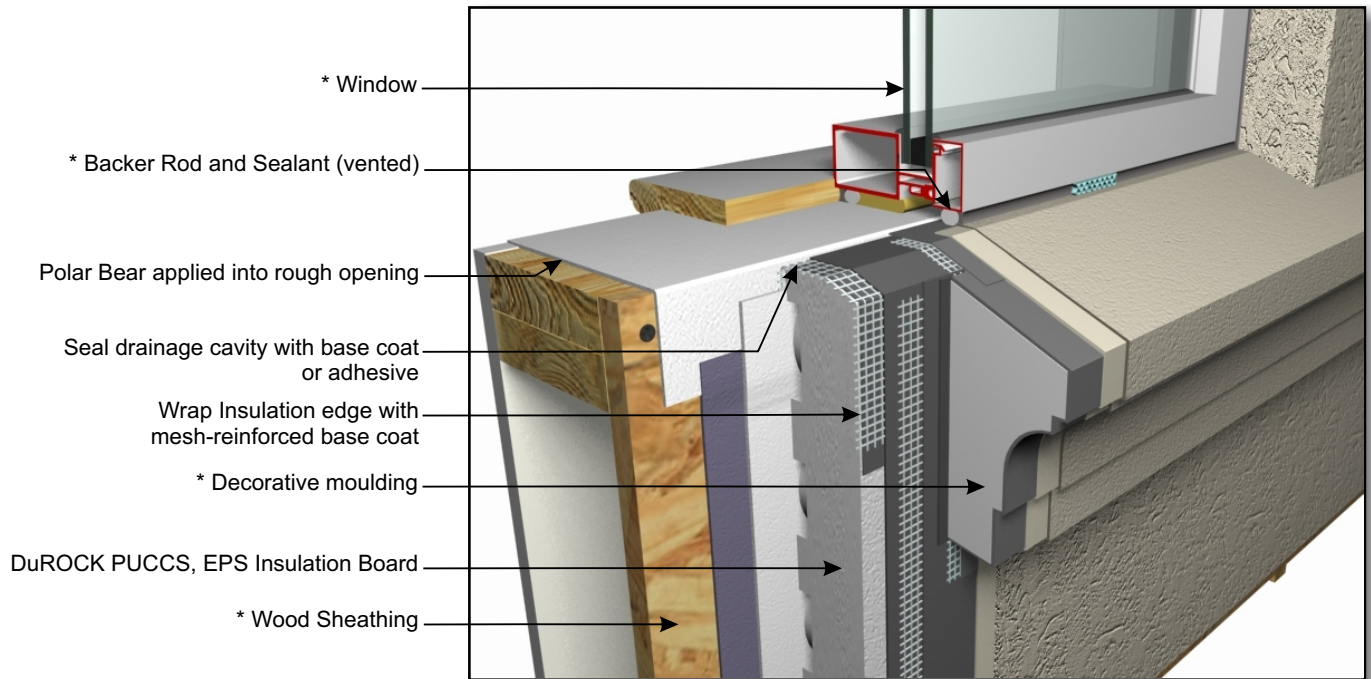
**PUCCS-LRRC (02)**  
WINDOW HEADER WITH METAL FLASHING

ARCHITECTURAL FINISHING SYSTEMS

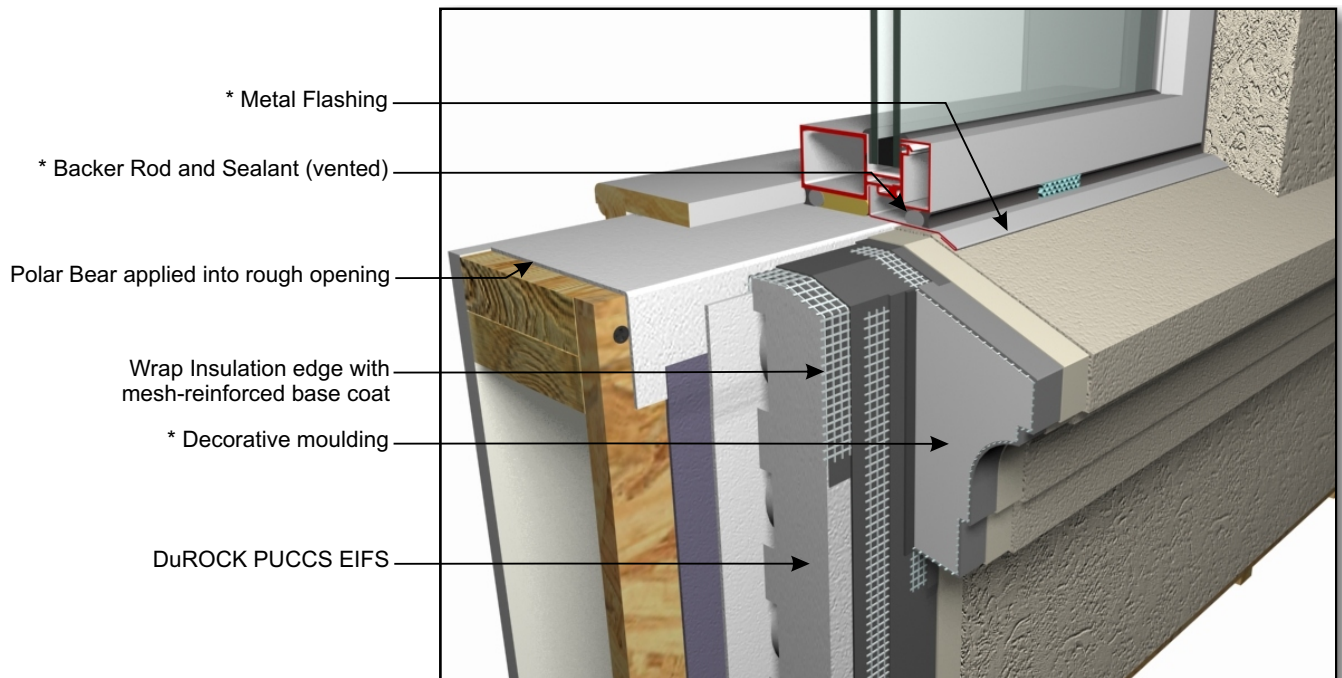


# DuROCK PUCCS EIFS

## Exterior Insulation Finish System for Low Rise Residential Construction



**PUCCS-LRRC (03)**  
WINDOW SILL WITHOUT FLASHING

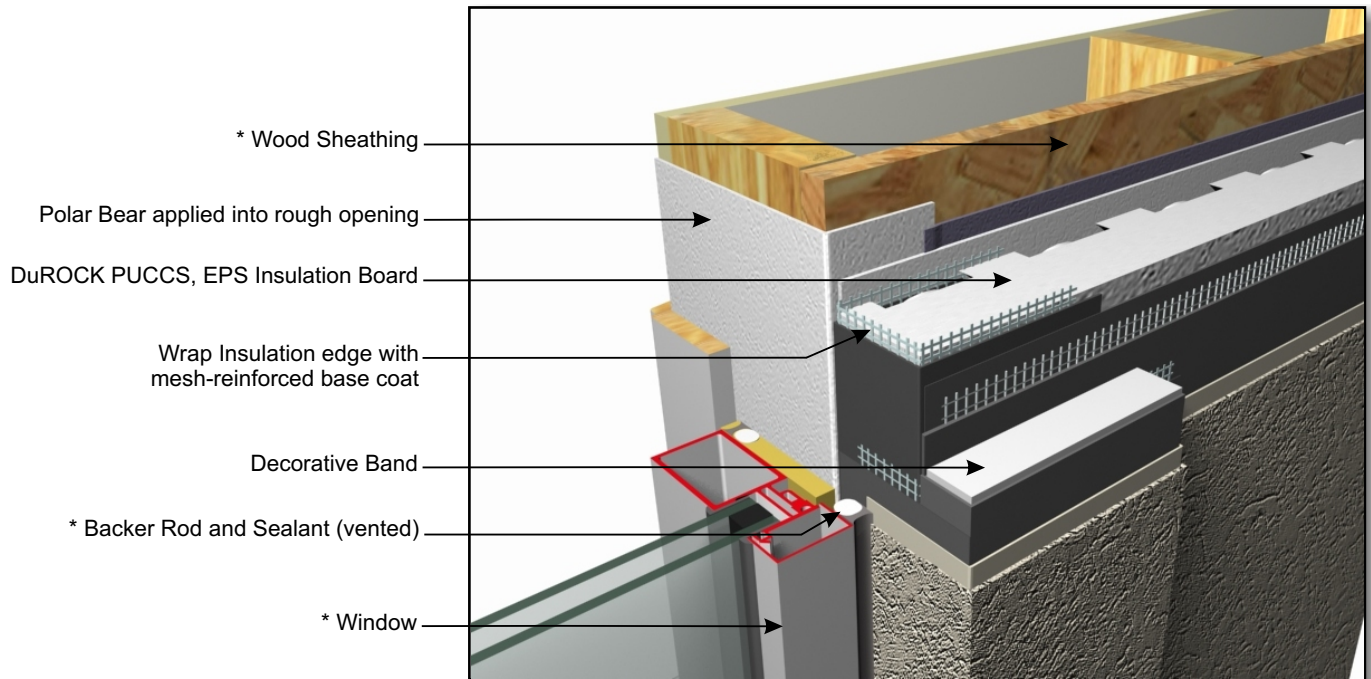


(\* by others)

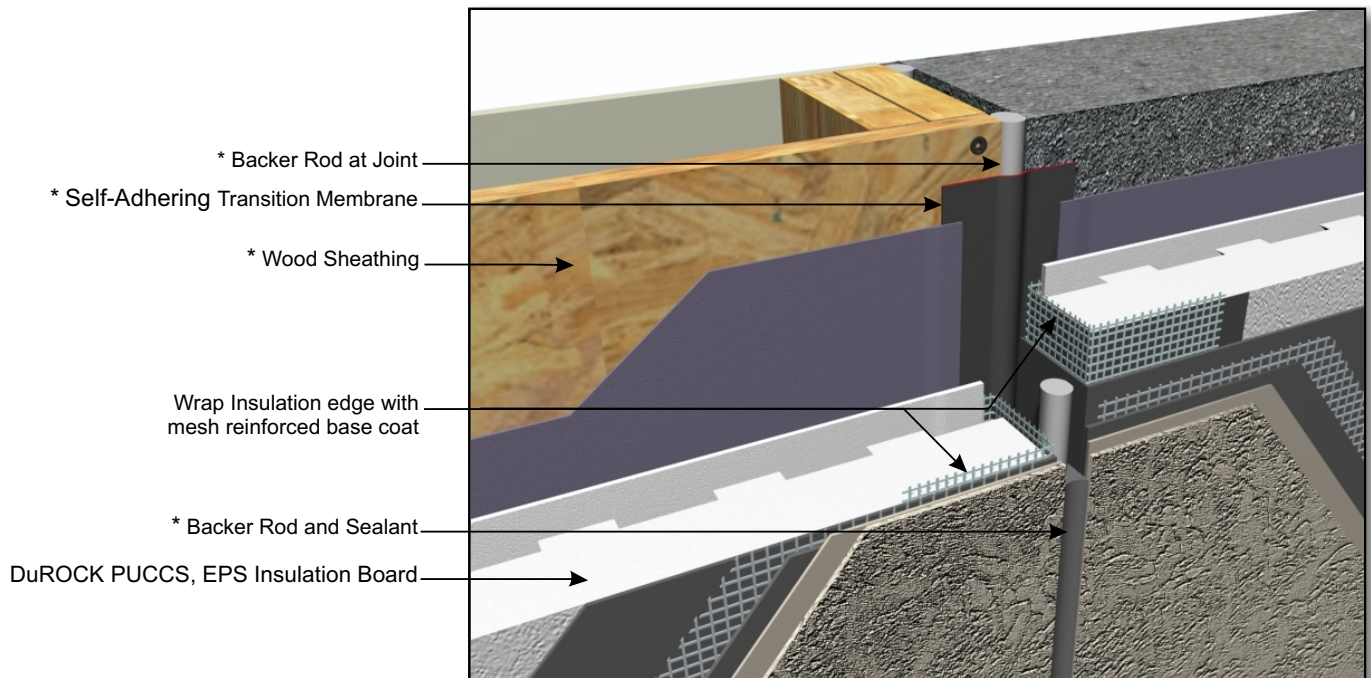
**PUCCS-LRRC (04)**  
WINDOW SILL WITH METAL FLASHING

# DuROCK PUCCS EIFS

## Exterior Insulation Finish System for Low Rise Residential Construction



**PUCCS-LRRC (05)**  
**WINDOW JAMB DETAIL**



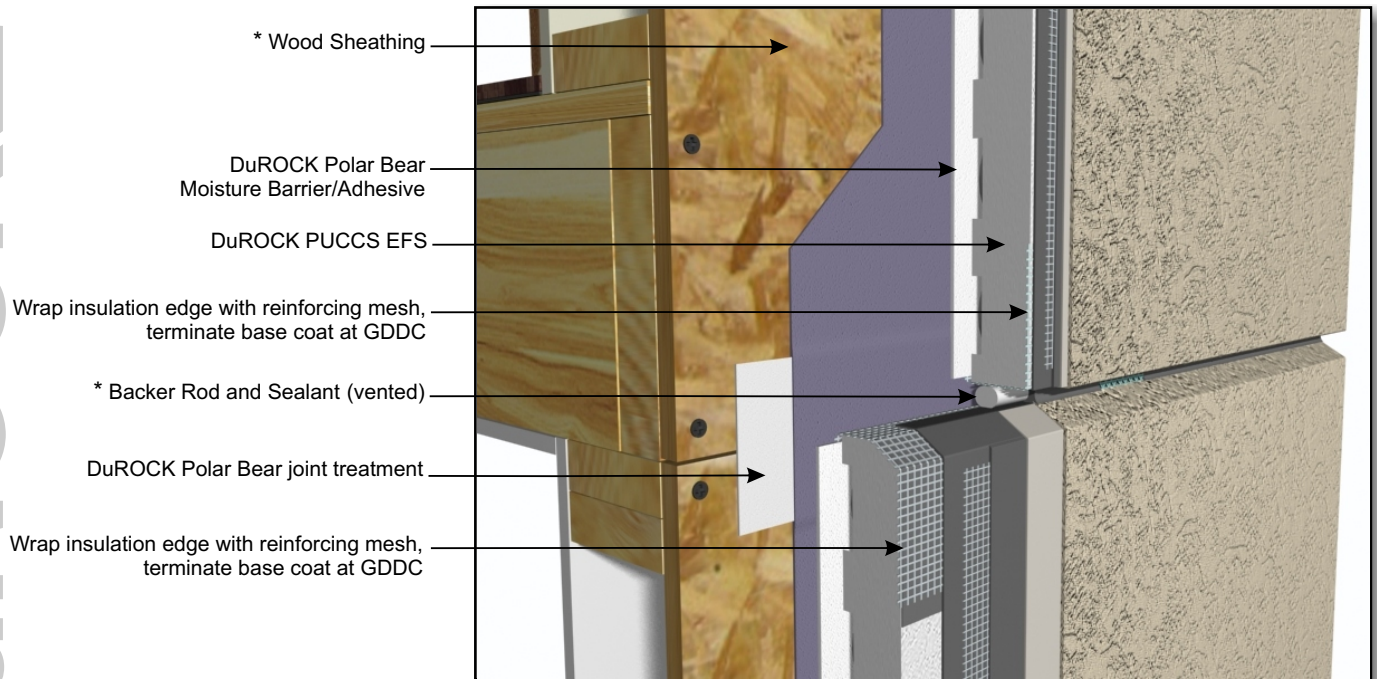
(\* by others)

**PUCCS-LRRC (06)**  
**VERTICAL EXPANSION JOINT, JUNCTION WITH CONCRETE WALL**

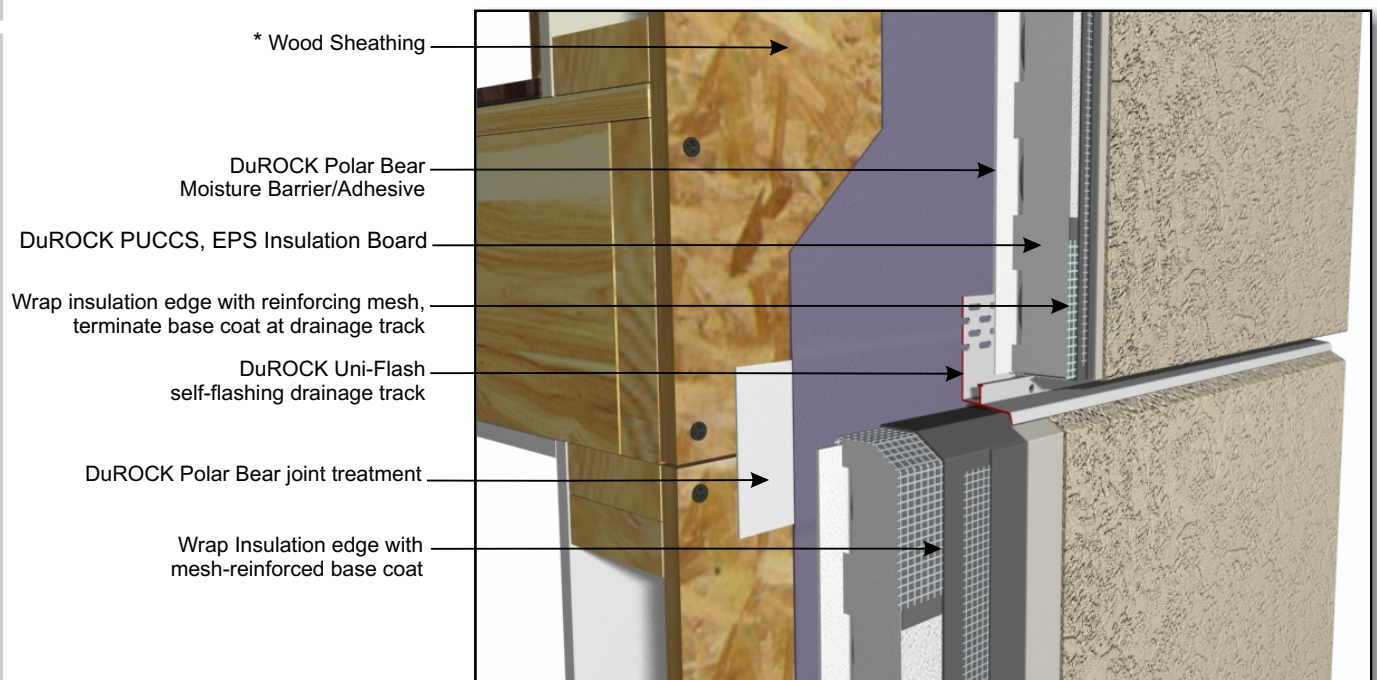


# DuROCK PUCCS EIFS

## Exterior Insulation Finish System for Low Rise Residential Construction



**PUCCS-LRRC (07)**  
HORIZONTAL EXPANSION JOINT (SEALED)



(\* by others)

**PUCCS-LRRC (08)**  
HORIZONTAL EXPANSION JOINT (DRAINED)

# DuROCK PUCCS EIFS

## Exterior Insulation Finish System for Low Rise Residential Construction

DuROCK PUCCS, EPS Insulation Board

Wrap insulation edge with reinforcing mesh,  
terminate base coat at drainage track

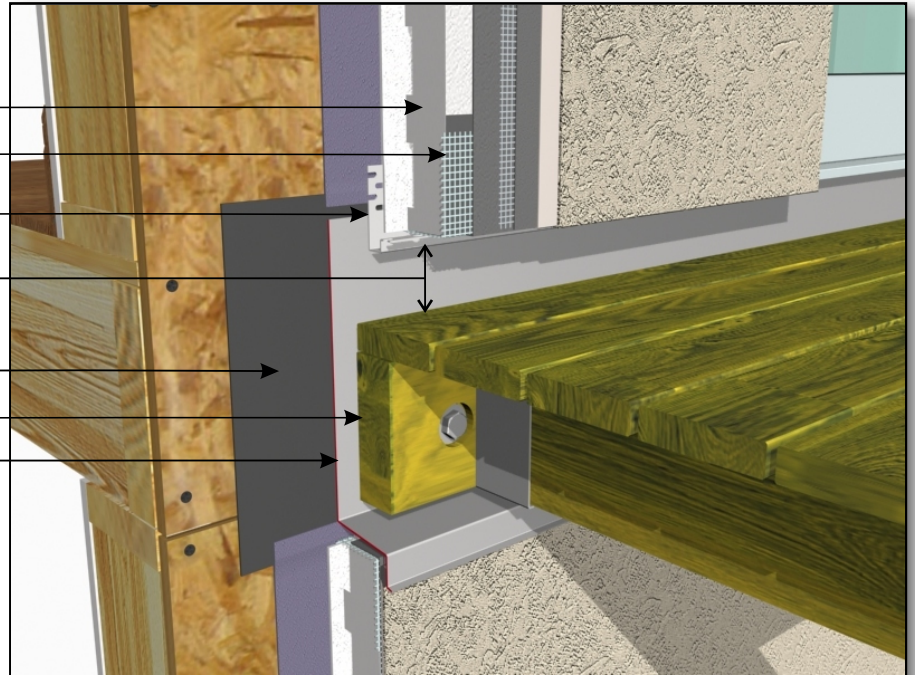
DuROCK Uni-Track  
drainage track with lip

Minimum 2" clearance required  
above deck top

\* Self-Ahering Transition Membrane

\* Balcony deck

\* Metal Flashing

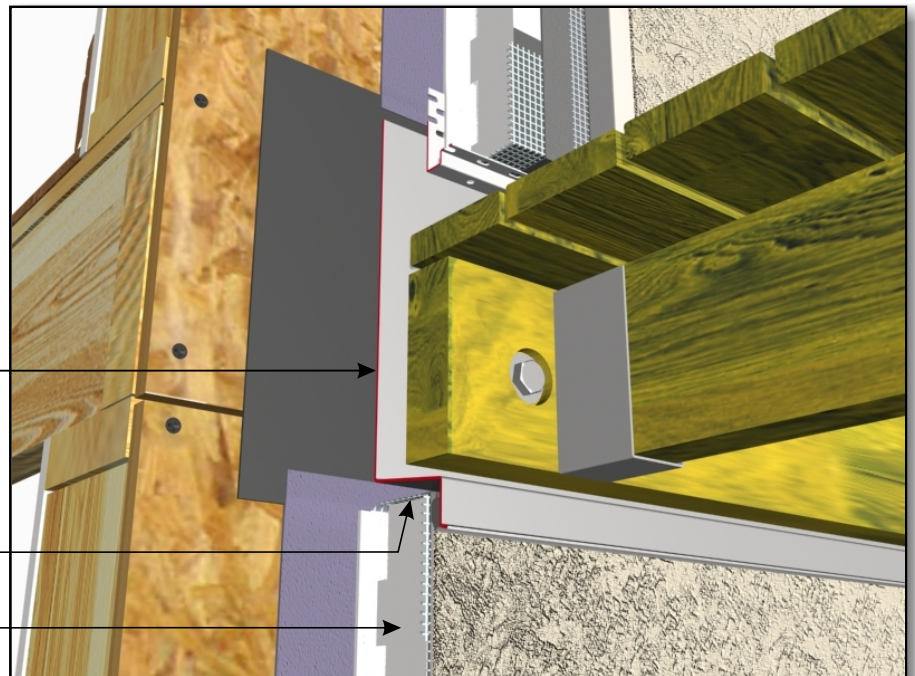


**PUCCS-LRRC (09)**  
TERMINATION AT BALCONY/DECK (VIEW A)

\* Metal Flashing

Wrap insulation edge with reinforcing mesh,  
terminate base coat at drainage track

DuROCK PUCCS, EPS Insulation Board

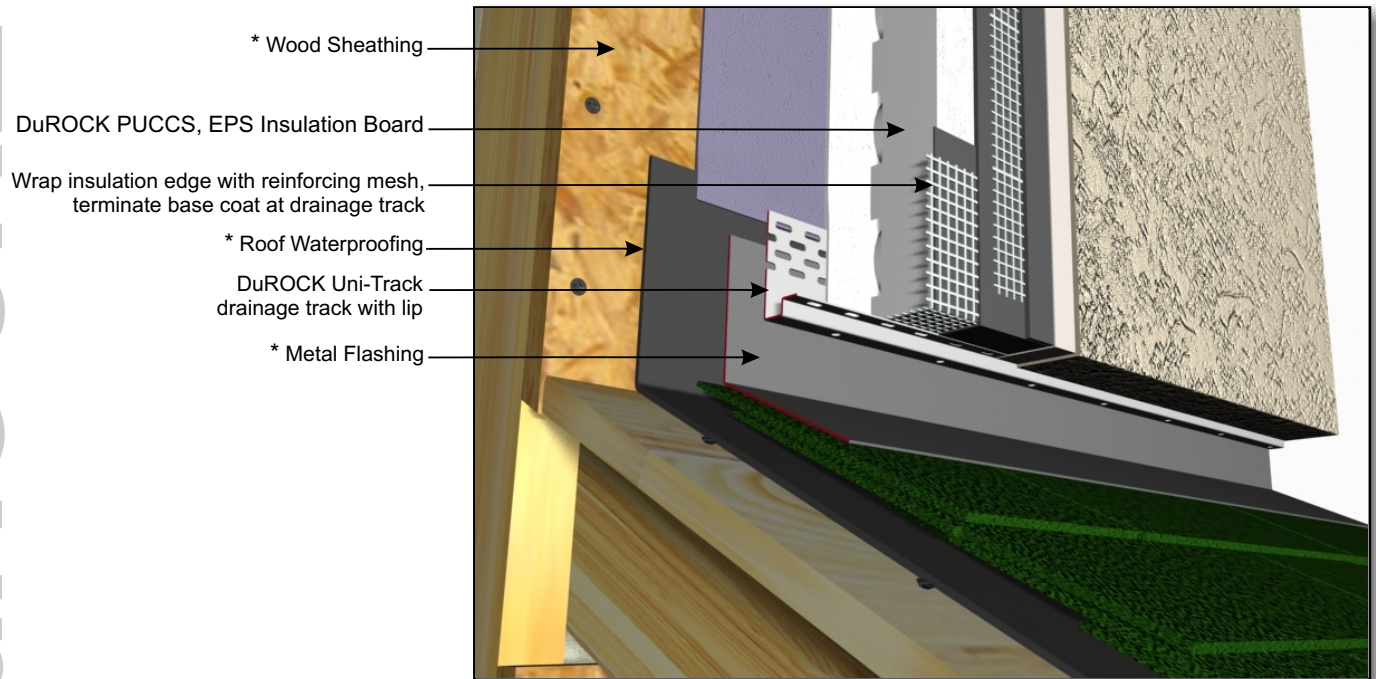


**PUCCS-LRRC (09A)**  
TERMINATION AT BALCONY/DECK (VIEW B)

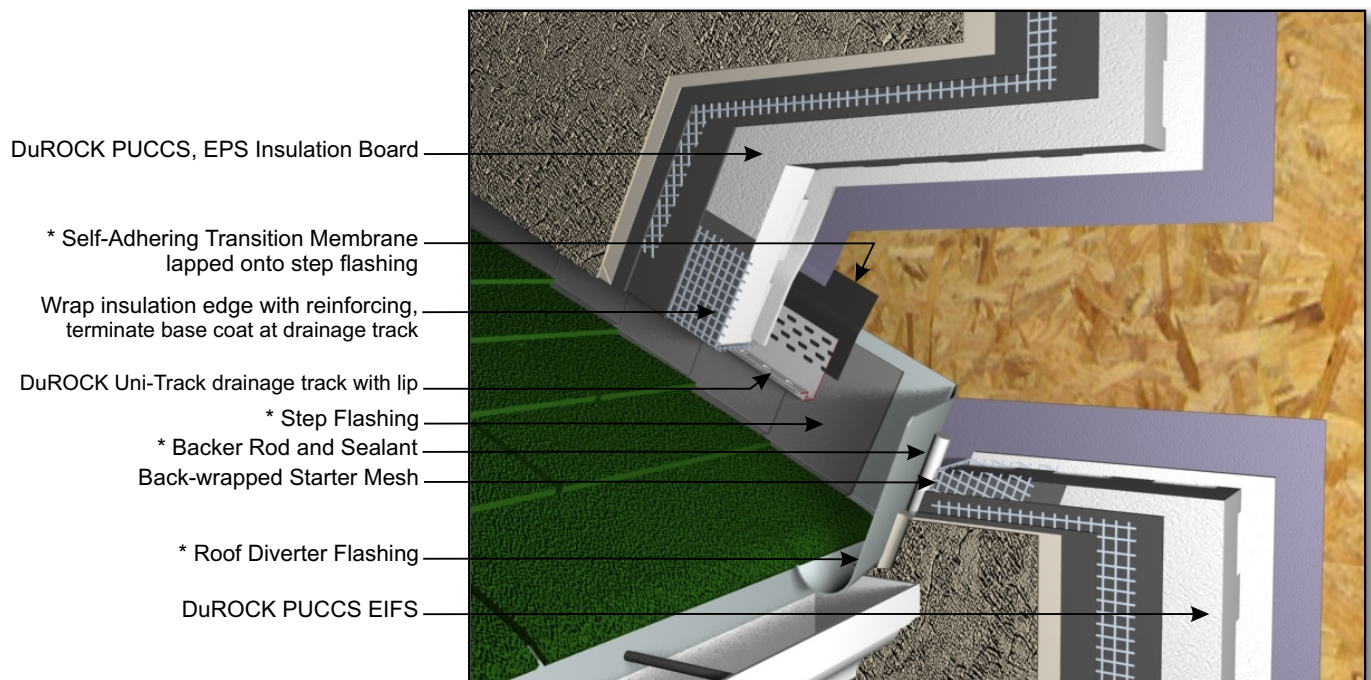


# DuROCK PUCCS EIFS

## Exterior Insulation Finish System for Low Rise Residential Construction



**PUCCS-LRRC (10)**  
TERMINATION AT SLOPED ROOF TO FRONT WALL



(\* by others)

**PUCCS-LRRC (10A)**  
TERMINATION AT SLOPED ROOF TO SIDE WALL

ARCHITECTURAL FINISHING SYSTEMS



# DuROCK PUCCS EIFS

## Exterior Insulation Finish System for Low Rise Residential Construction

DuROCK PUCCS, EPS Insulation Board

Wrap insulation edge with reinforcing mesh,  
terminate base coat at GDDC

\* Self-Adhering Transition Membrane  
lapped onto metal flashing

\* Metal flashing

\* Self-Adhering Transition Membrane

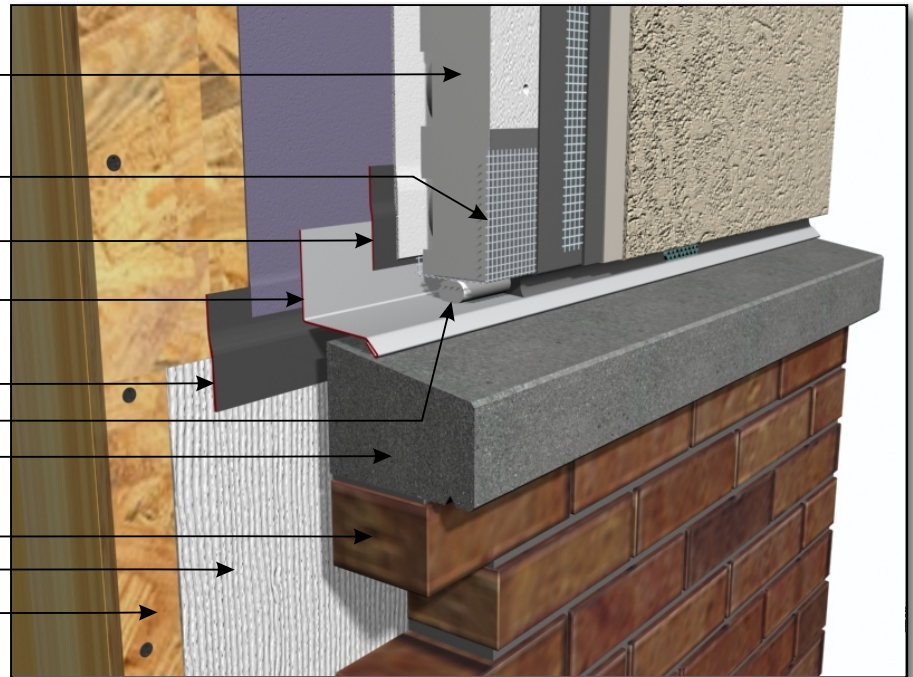
\* Backer Rod and Sealant (vented)

\* Concrete Sill

\* Brick Cladding

\* Sheathing Membrane

\* Wood Sheathing



### PUCCS-LRRC (11)

TERMINATION AT CONCRETE SILL WITH METAL FLASHING

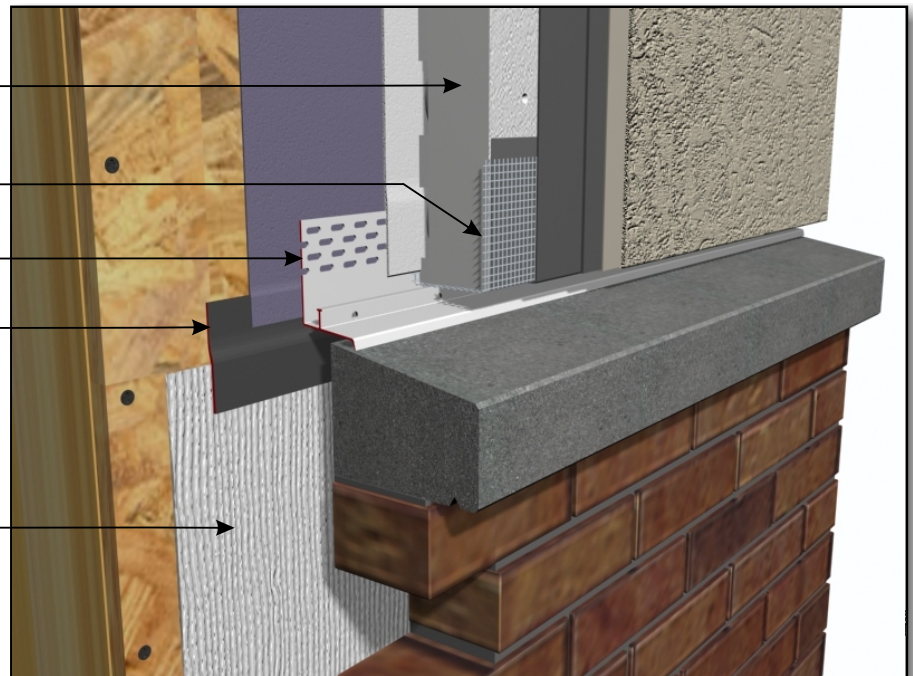
DuROCK PUCCS, EPS Insulation Board

Wrap insulation edge with reinforcing mesh,  
terminate base coat at drainage track

DUROCK Uni-Flash  
self-flashing drainage track

\* Self-Adhering Transition Membrane

\* Sheathing Membrane



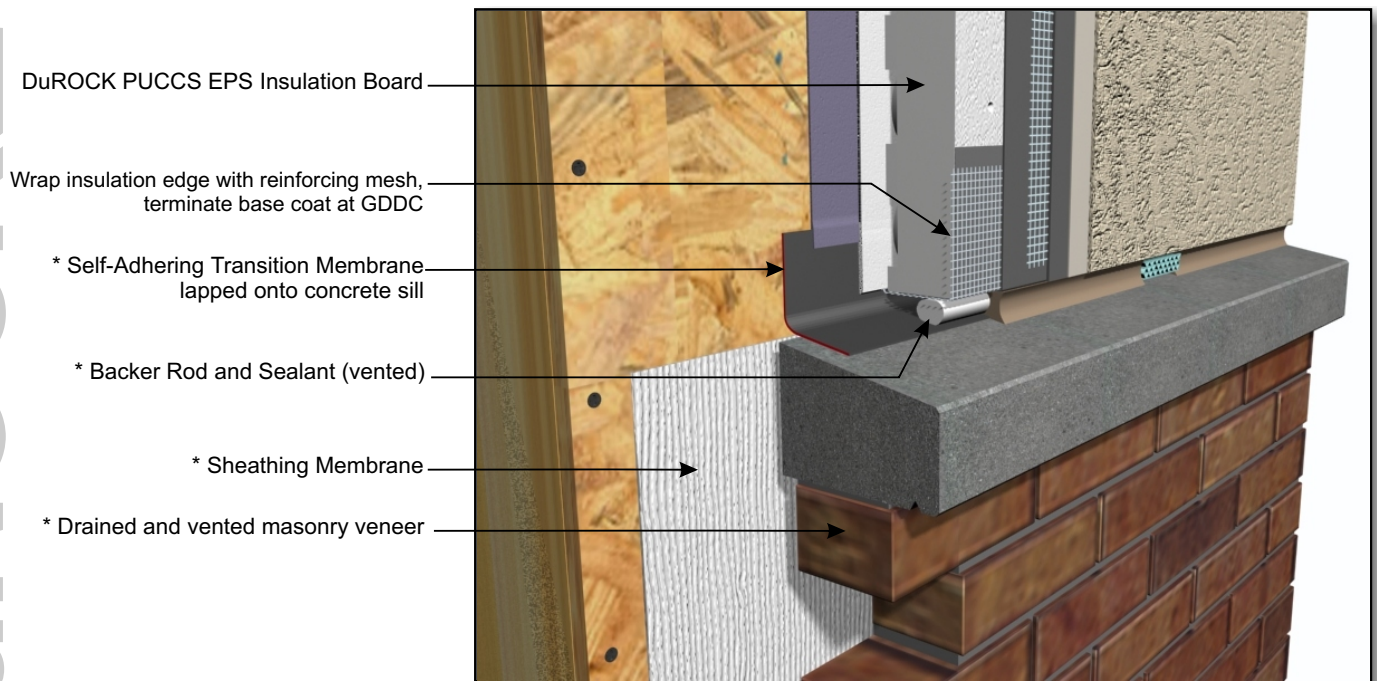
(\* by others)

### PUCCS-LRRC (12)

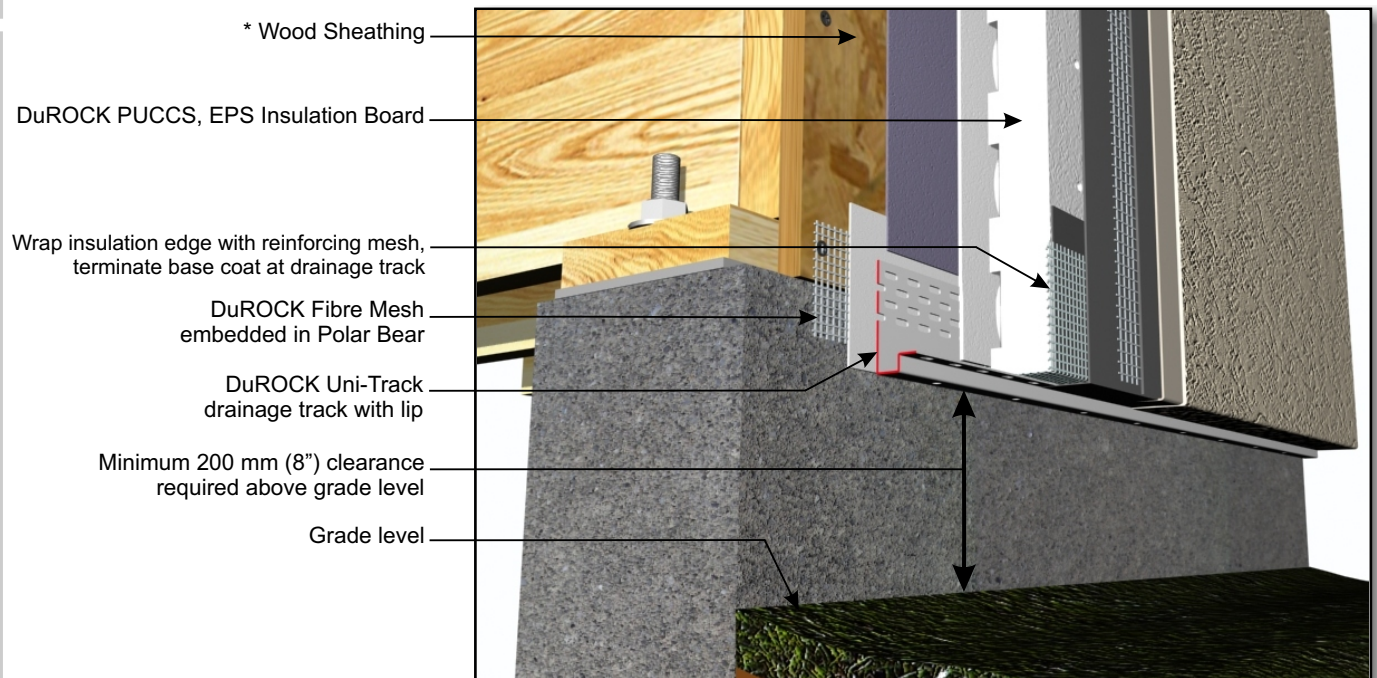
TERMINATION AT CONCRETE SILL WITH DuROCK UNI-FLASH

# DuROCK PUCCS EIFS

## Exterior Insulation Finish System for Low Rise Residential Construction



**PUCCS-LRRC (13)**  
TERMINATION AT CONCRETE SILL WITH MEMBRANE (DRAINED)



(\* by others)

**PUCCS-LRRC (14)**  
TERMINATION AT GRADE



# DuROCK PUCCS EIFS

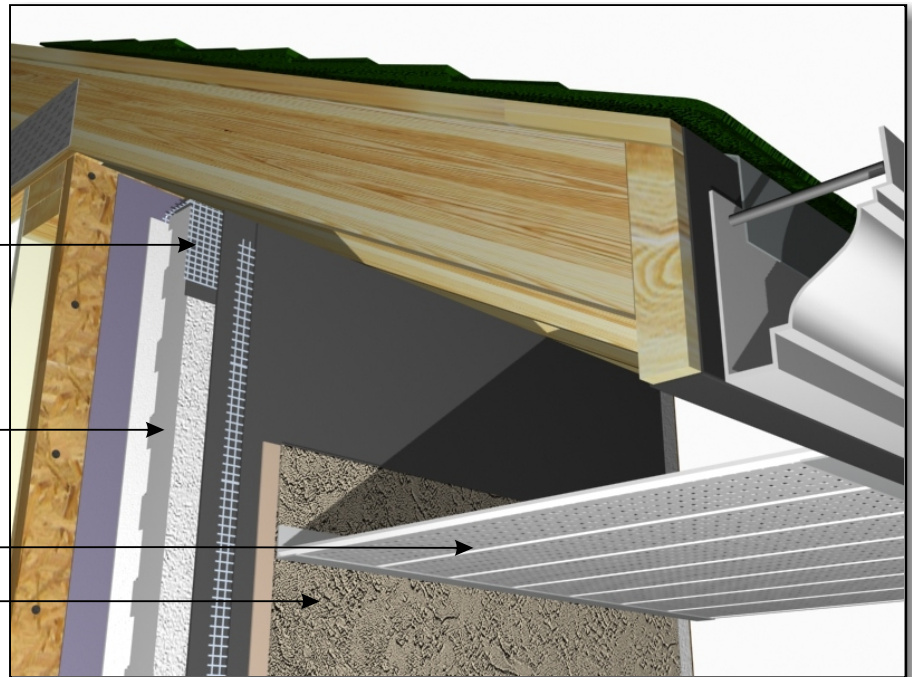
## Exterior Insulation Finish System for Low Rise Residential Construction

Wrap insulation edge with  
mesh-reinforced base coat

DuROCK PUCCS EIFS

\* Soffit

DuROCK Finish Coat



**PUCCS-LRRC (15)**  
TERMINATION AT SOFFIT

DuROCK PUCCS, EPS Insulation Board

Polar Bear applied around electric box  
and onto sheathing

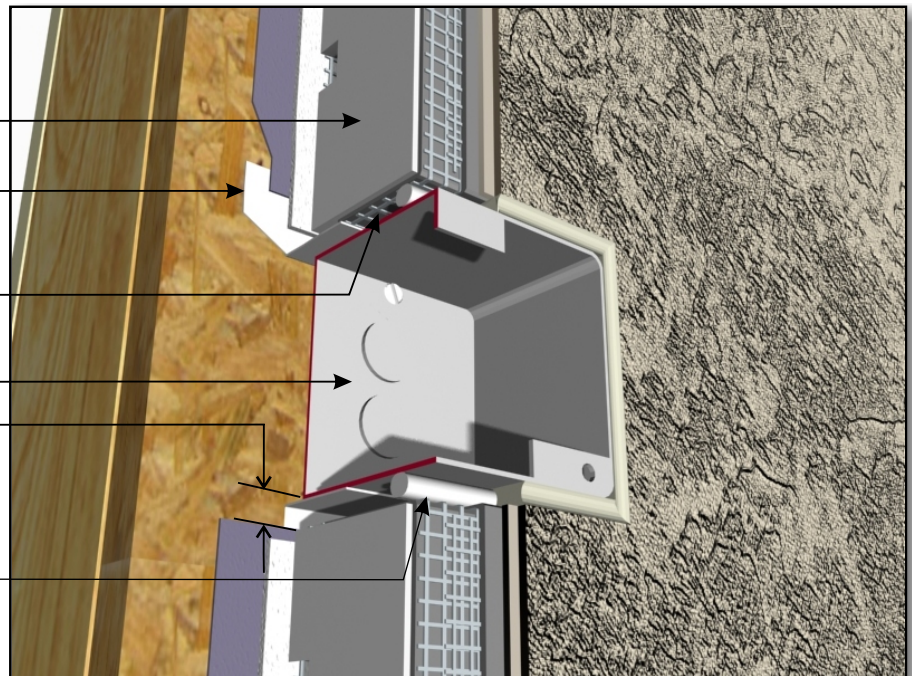
Wrap insulation edge with reinforcing  
mesh, terminate base coat at GDDC

\* Weather tight electrical box

Note: Provide approximate 15 mm  
space between electric box and  
insulation board

\* Backer Rod and Sealant

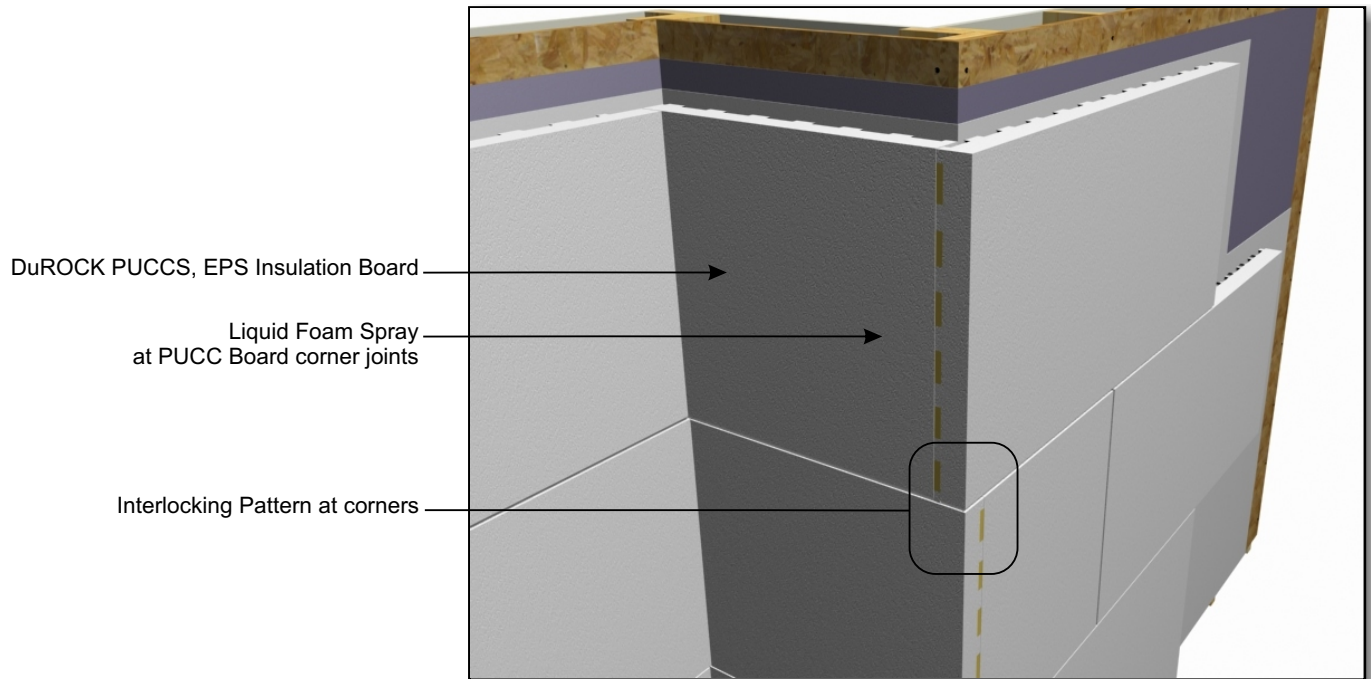
(\* by others)



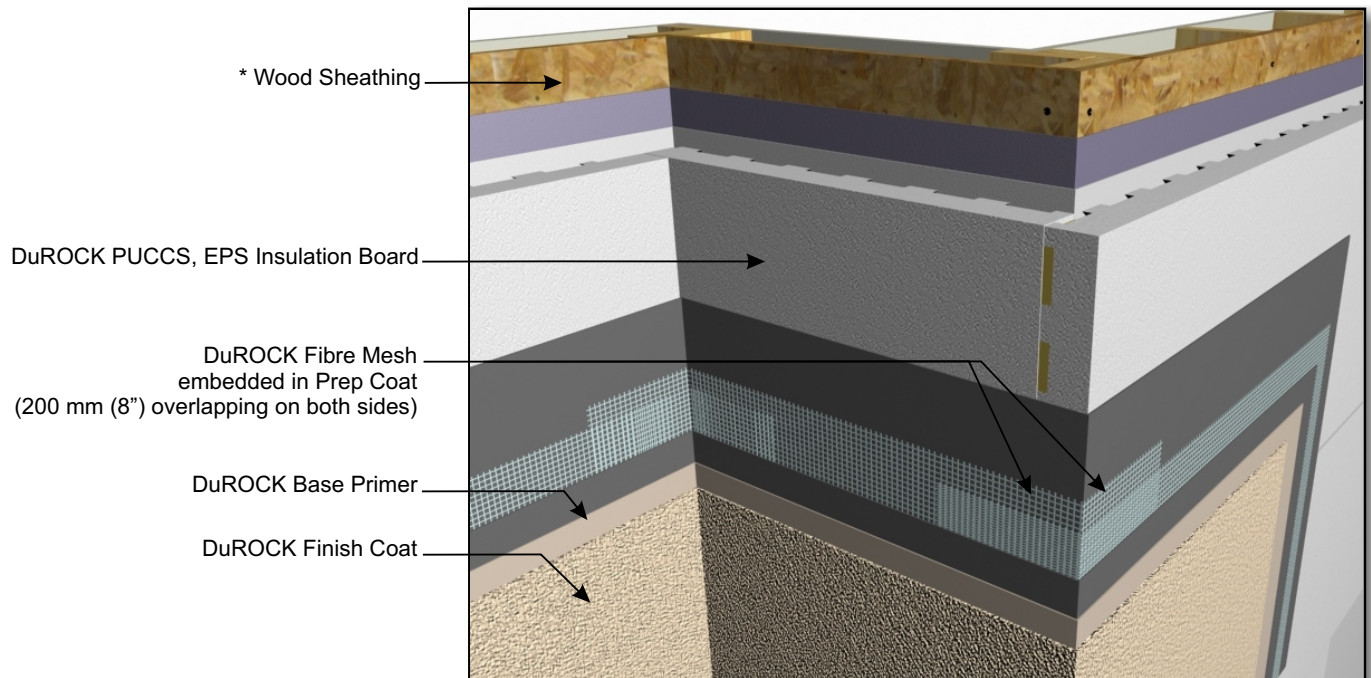
**PUCCS-LRRC (16)**  
EXTERIOR ELECTRIC BOX PENETRATION

# DuROCK PUCCS EIFS

## Exterior Insulation Finish System for Low Rise Residential Construction



**PUCCS-LRRC (17)**  
CORNER TREATMENT, PUCS BOARD INTERLOCKING PATTERN



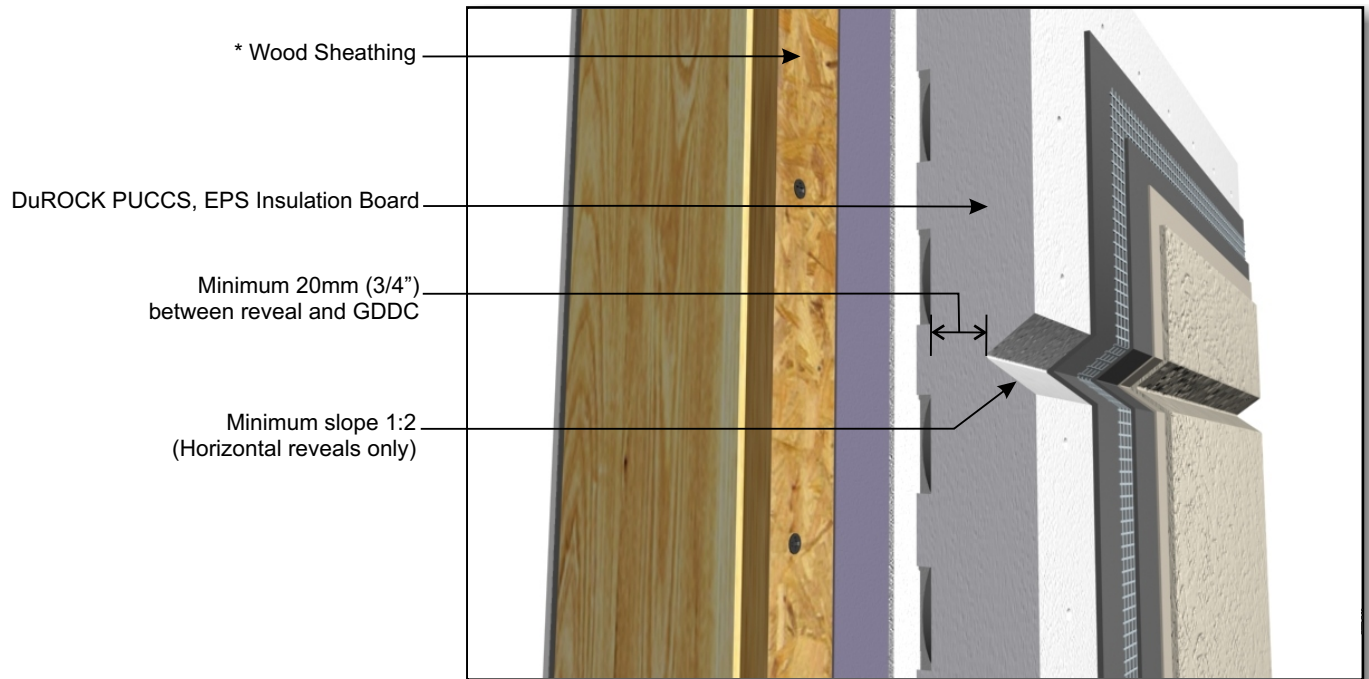
(\* by others)

**PUCCS-LRRC (17A)**  
CORNER TREATMENT, FIBRE MESH APPLICATION

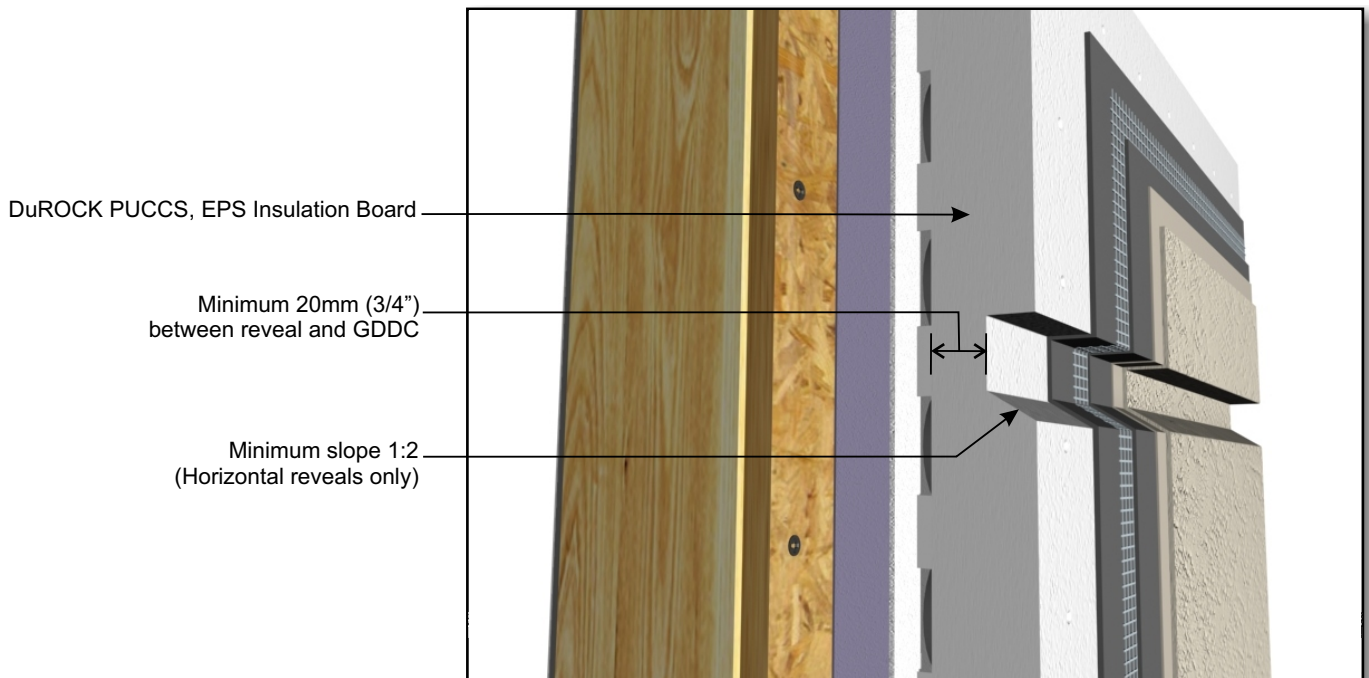


# DuROCK PUCCS EIFS

## Exterior Insulation Finish System for Low Rise Residential Construction



**PUCCS-LRRC (18)**  
AESTHETIC REVEAL (TYPE A)



(\* by others)

**PUCCS-LRRC (18A)**  
AESTHETIC REVEAL (TYPE B)