

# SW

10 A / 250 VAC EN 60320 6 A / 250 VAC UL 498

Fuse max 6.3 A 250 VAC

### TYPICAL APPLICATIONS

Small appliances, appliance inlet for cold conditions with earthing contact, 1 or 2 fuse-holders For voltage selector

### WIRING DIAGRAMS

■ 2-pole + earth with fuse-holder slots

### CUT OUT

56x28 mm

### GWT

850 °C

### GWT NO FLAME (<2sec)

750 °C on demand



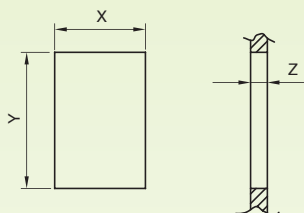
### SW.

C14  
Class I  
T 70 °C



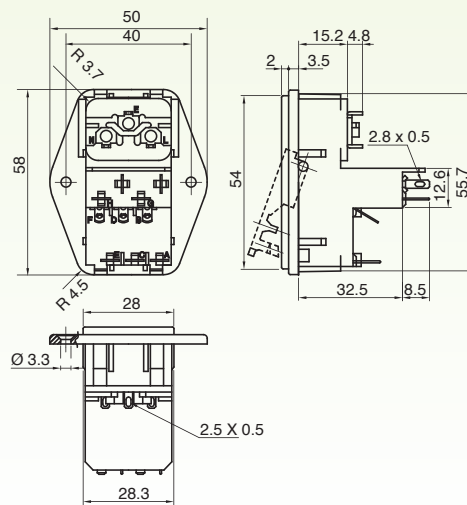
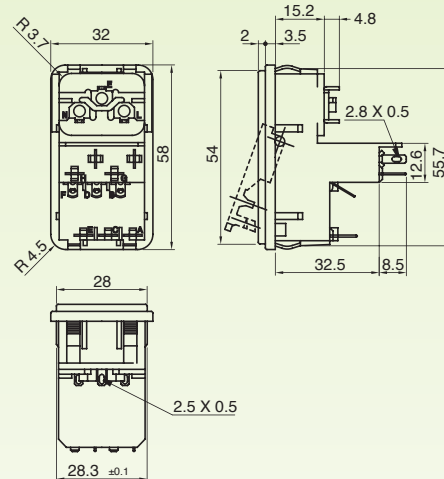
TF 2,8 x 1,5

### CUT OUT



Z	X	Y
0,8 ... 2,0	55,9 ... 56,1	28,5 ... 28,7
2,1 ... 3,2	56,2 ... 56,4	28,5 ... 28,7

### DRAWING



### SW5.

C14  
Class I  
T 70 °C



TF 2,8 x 1,5

Mounting hole 90° countersink

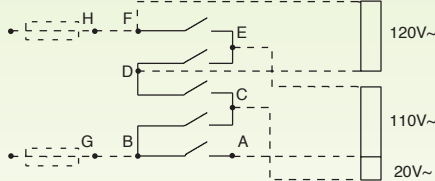
## ACTUATING DEVICE FOR VOLTAGE SELECTOR

Accessories available for SW. and SW5.

### SW950A1



	100V~	120V~	220V~	240V~
F - E	↔	↔	↔	↔
D - E	↔	↔	↔	↔
D - C	↔	↔	↔	↔
B - C	↔	↔	↔	↔
B - A	↔	↔	↔	↔



### SW966A1



	100V~	120V~	230V~	240V~
F - E	↔	↔	↔	↔
D - E	↔	↔	↔	↔
D - C	↔	↔	↔	↔
B - C	↔	↔	↔	↔
B - A	↔	↔	↔	↔

