

cortex

calyces

ureter

medulla

nephron

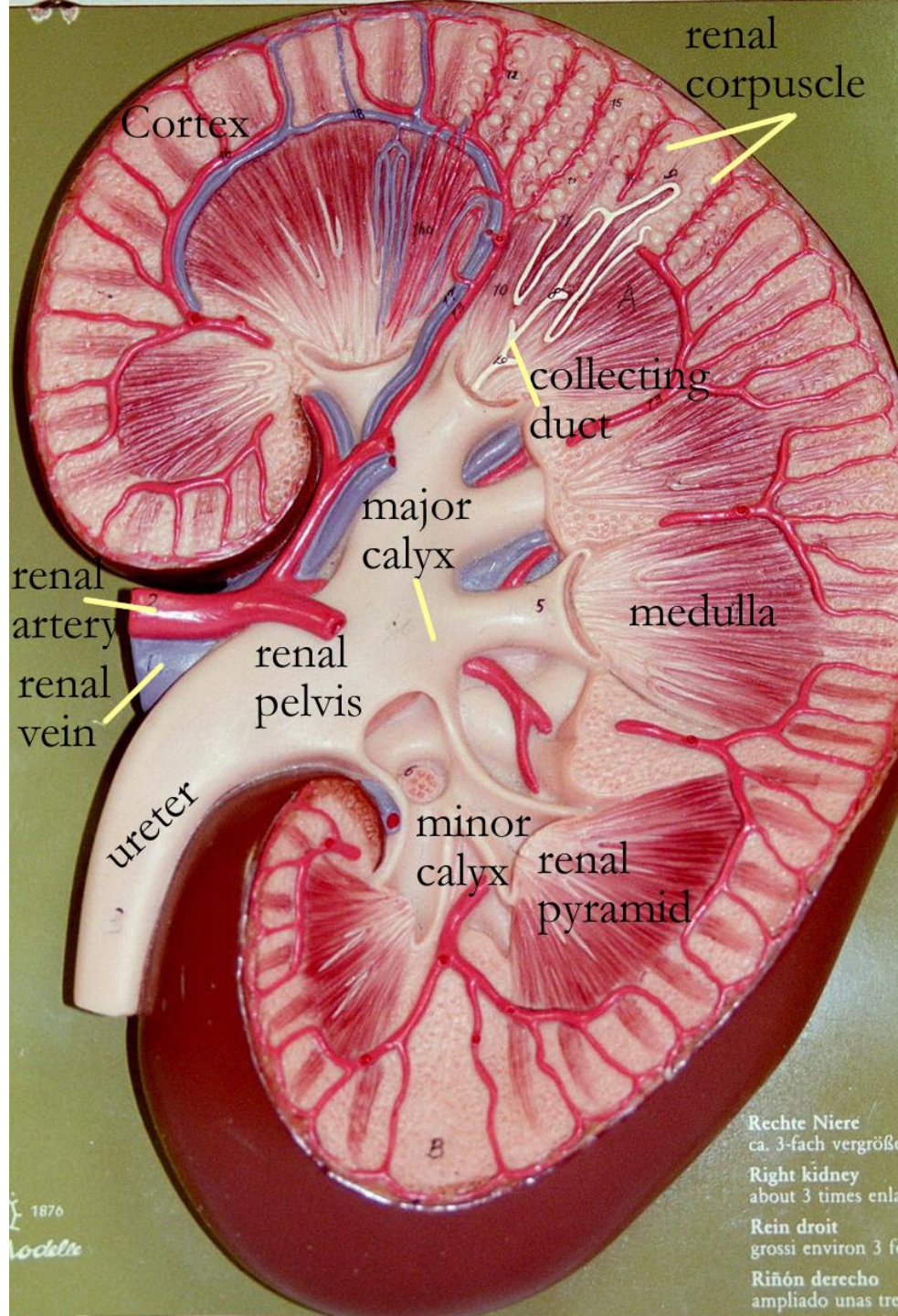
Glomerulus

Bowman's Capsule

PCT

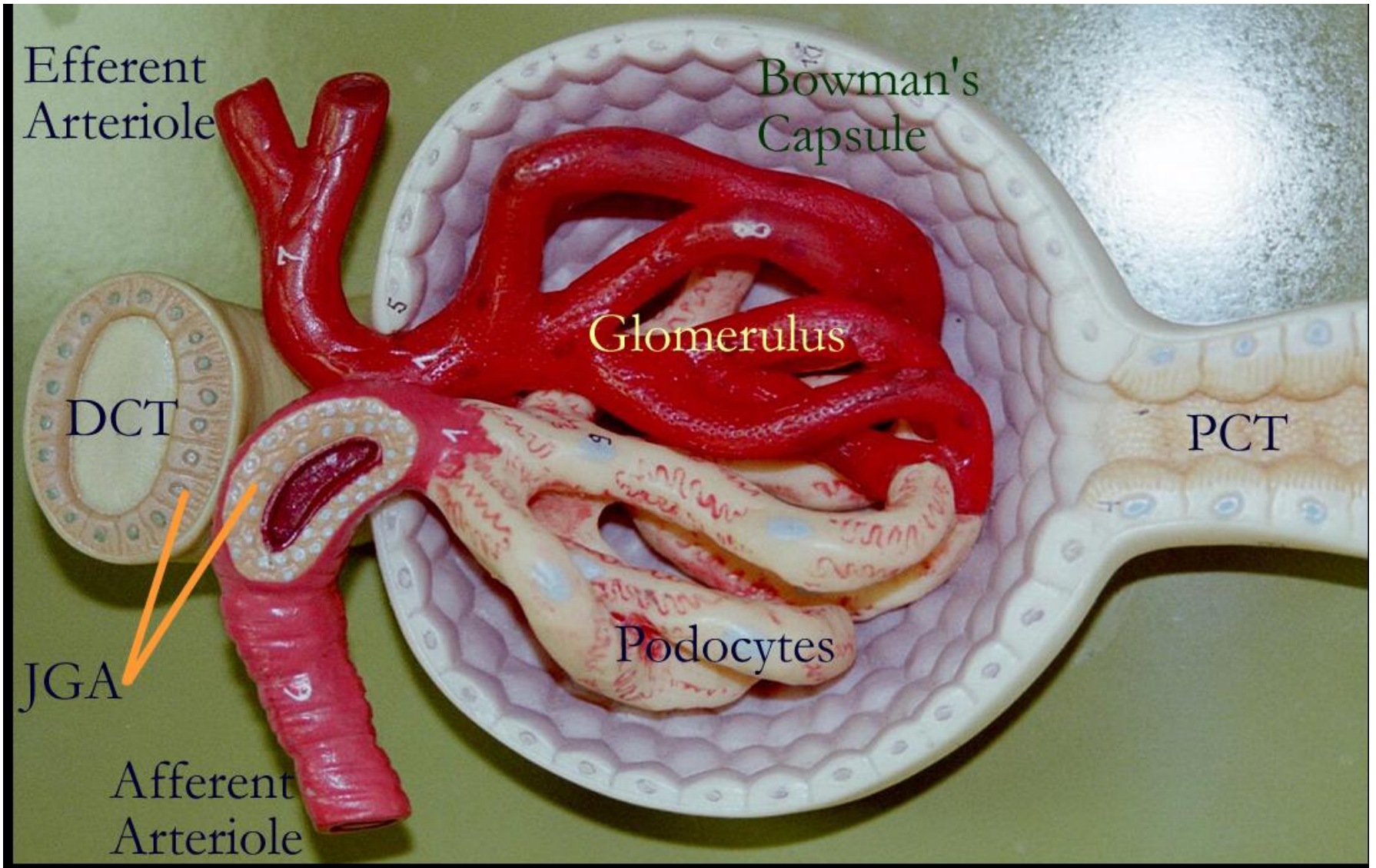
Rechte Niere
ca. 3-fach vergrößert
Right kidney
about 3 times enlarged
Rein droit
gross environ 3 fois
Riñón derecho
ampliado unas tres veces

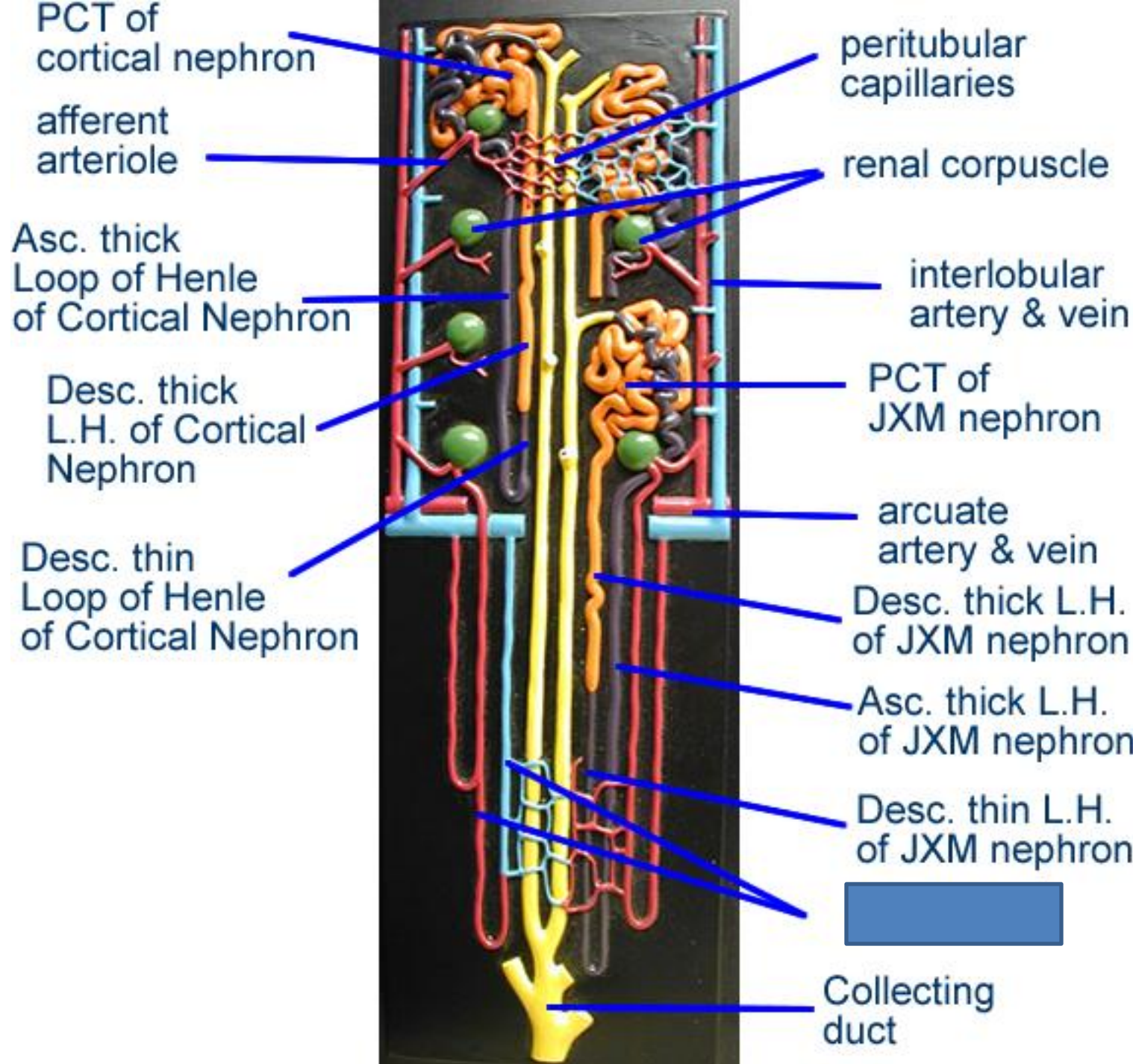
Nierenkörperchen
ca. 700-fach vergrößert
Corpuscle of the kidney
about 700 times enlarged
Glomérulo de Malpighi
gross environ 700 fois
Glomérulo renal
ampliado unas 700 veces

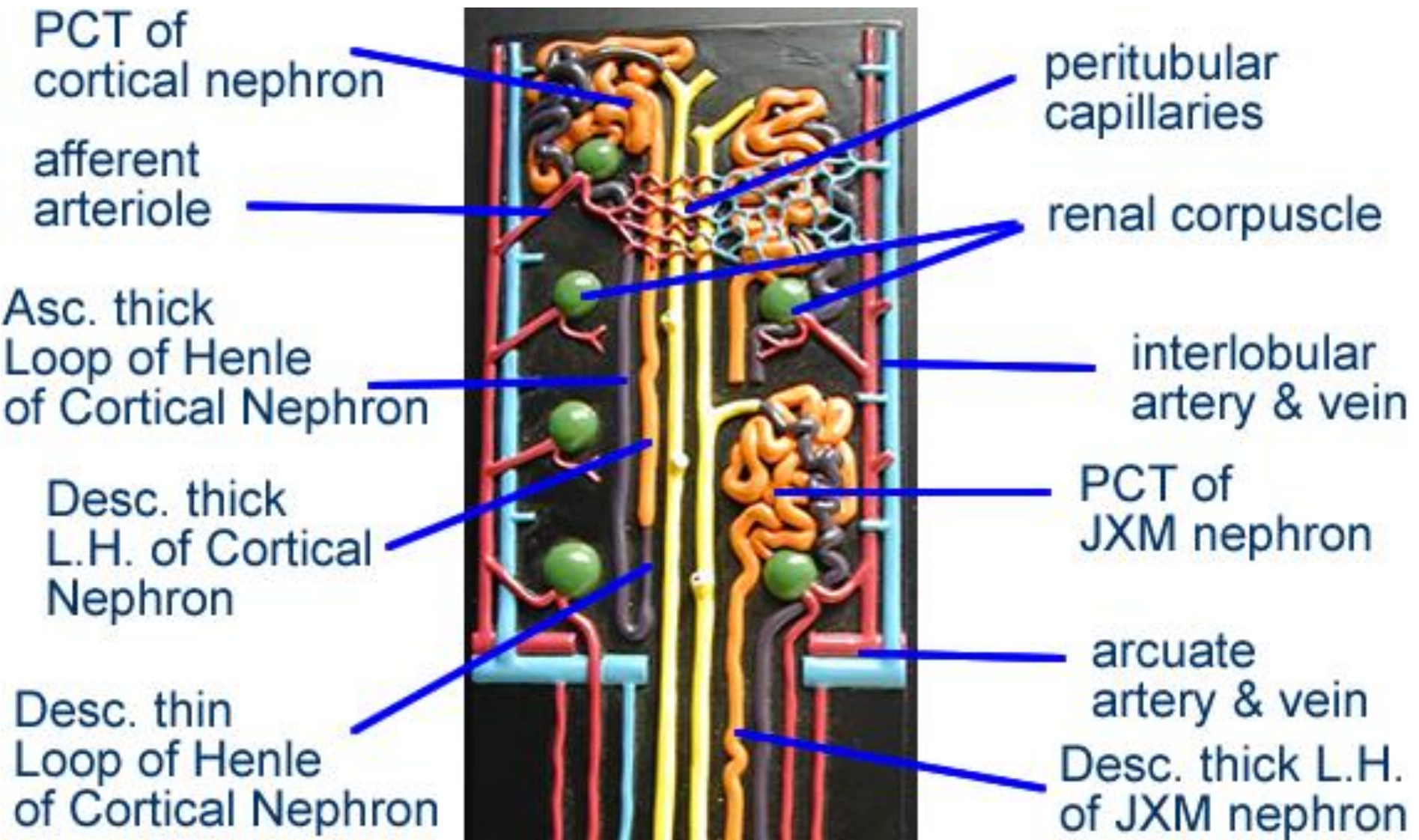


Rechte Niere
ca. 3-fach vergrößert
Right kidney
about 3 times enlarged
Rein droit
gros environ 3 fois
Riñón derecho
ampliado unas tres

1876
L. Roden

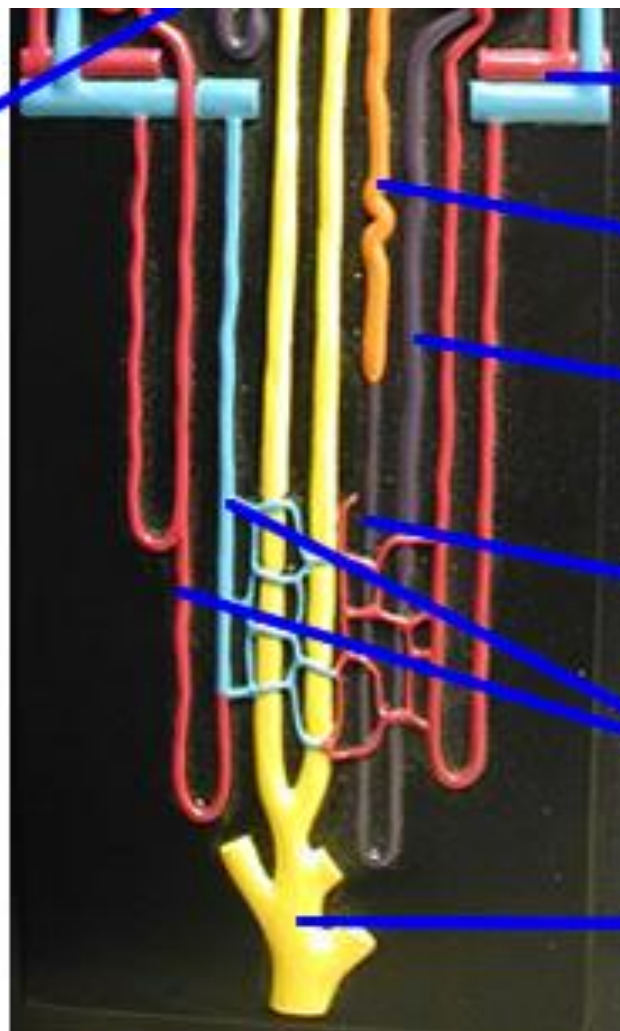






nephron

Desc. thin
Loop of Henle
of Cortical Nephron



arcuate
artery & vein

Desc. thick L.H.
of JXM nephron

Asc. thick L.H.
of JXM nephron

Desc. thin L.H.
of JXM nephron



Collecting
duct

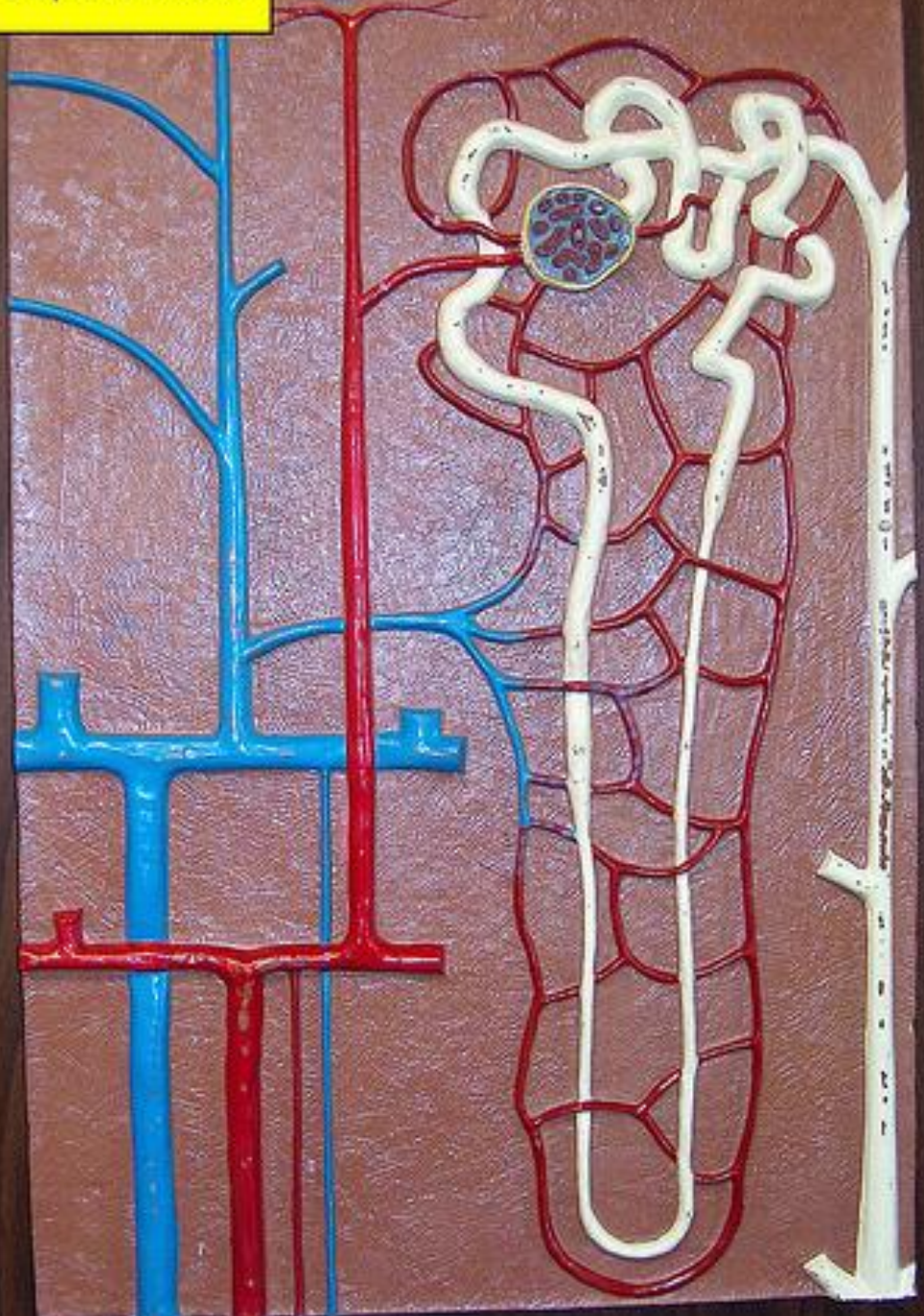
Urinary System Model



Urinary System Model - bladder



Nephron Model





Giant Kidney Model - Pyramid



Heart
 Right atrium
 Right ventricle
 Left atrium
 Left ventricle
 Aorta
 Pulmonary artery

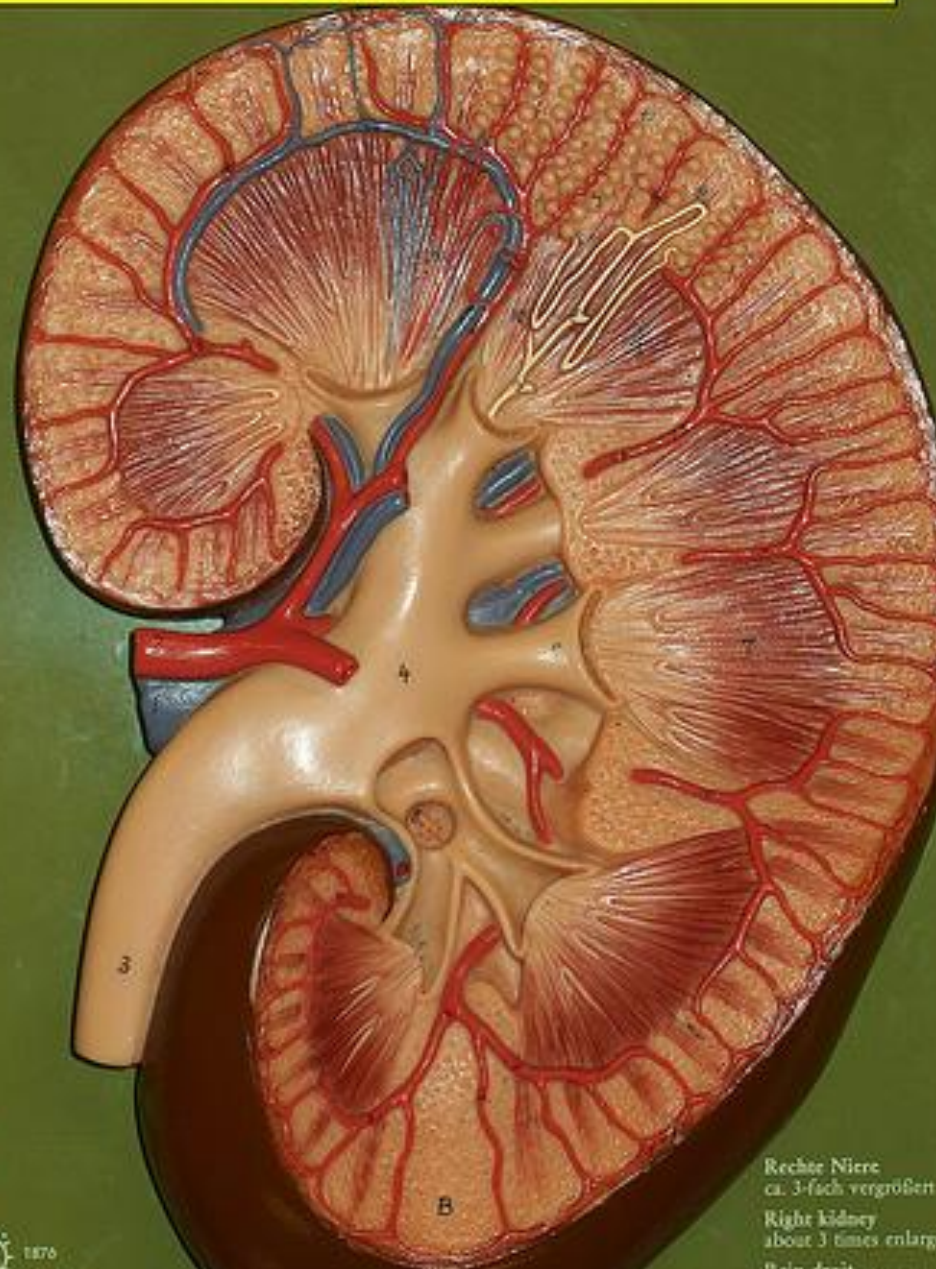


Lungs
 Right lung
 Left lung
 Bronchi
 Pulmonary artery
 Pulmonary vein



Digestive system
 Stomach
 Liver
 Gallbladder
 Intestines

Giant Kidney on Green Board - kidney in coronal section



Rechte Niere
ca. 3-fach vergrößert.
Right kidney
about 3 times enlarged.
Rein droit
gros environ 3 fois
Riñón derecho
ampliado unas tres ve

Grp 1876
Somerset Models

Giant Kidney Model Glomerulus

