



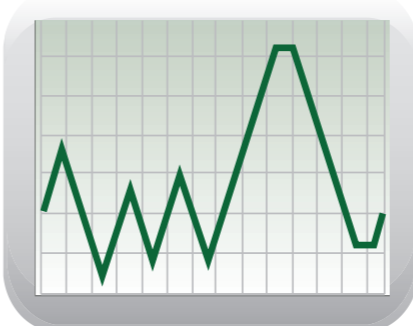
- multifunction display controlled by micro-processor
- double and patented motor-operated closure
- stainless steel chamber without any welding
- aluminum trays
- 2 vacuum pumps
- built - in printer and usb connection
- inner heater
- 16 amp commando 230V single phase socket
- osmosis system

complete cabinet

upper sterilization cabinet

sterilization cycles

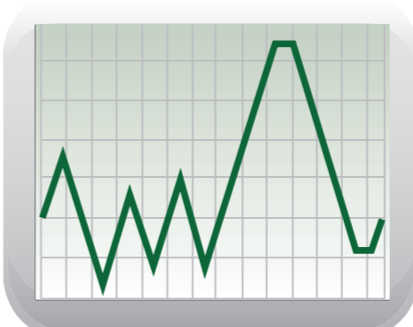
134°C class B



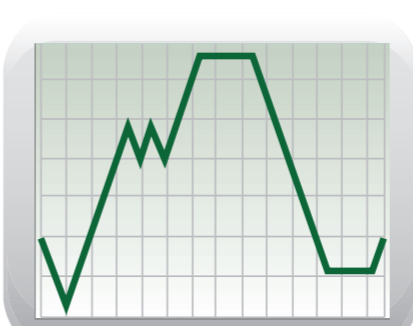
121°C class B



134°C prion



134°C class S



an extra-dry system can be activated for each sterilization cycle

features

| | |
|----------------------------|---------|
| sterilization temperature: | 134°C |
| sterilization pressure: | 2.1 bar |
| sterilization time: | 5' |
| drying time: | 15' |
| cycle time*: | 1h 15' |

| | |
|----------------------------|---------|
| sterilization temperature: | 121°C |
| sterilization pressure: | 1.1 bar |
| sterilization time: | 18' |
| drying time: | 15' |
| cycle time*: | 1h 25' |

| | |
|----------------------------|---------|
| sterilization temperature: | 134°C |
| sterilization pressure: | 2.1 bar |
| sterilization time: | 20' |
| drying time: | 15' |
| cycle time*: | 1h 35' |

| | |
|----------------------------|---------|
| sterilization temperature: | 134°C |
| sterilization pressure: | 2.1 bar |
| sterilization time: | 5' |
| drying time: | 15' |
| cycle time*: | 1h |

helix/b&d test

| | |
|----------------------------|---------|
| sterilization temperature: | 134°C |
| sterilization pressure: | 2.1 bar |
| sterilization time: | 3'30" |
| cycle time*: | 50' |

vacuum test

| | |
|-------------|-----|
| cycle time: | 17' |
|-------------|-----|

* Approx. cycle length calculated with warm chamber at full load



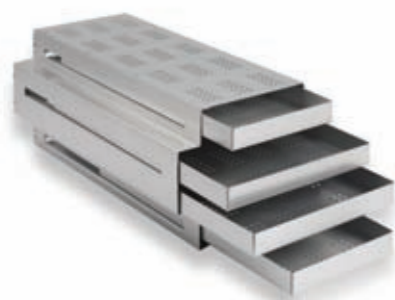
- CLASS B ref. UNI EN 13060
 - inner heater
 - overall dimensions/weight: (complete cabinet)

| | |
|---------|-----------------|
| height: | 820 mm (1600mm) |
| width: | 680 mm (680mm) |
| depth: | 783 mm (783mm) |
| weight: | 146kg (204kg)* |
 - chamber capacity:

| | |
|---------------------|---------------|
| volume: | 59.9l |
| diameter/depth: | 355 mm/605 mm |
| unwrapped material: | 15 kg |
| wrapped material: | 10 kg |
| porous loads: | 7 kg |
 - average water consumption: 3.5l per cycle **
 - power connection: 16A 230VAC 50Hz single phase
16 amp commando socket
- * Approx. value
** Average consumption depending on load and cycle types



■ lower cabinet



■ aluminium trays
(2x) 31 x 55 x 2,5 h cm
(2x) 22 x 55 x 2,5 h cm



■ reverse osmosis

standard accessories

tiche

a new B class steam sterilizer



Professional Sterilization Systems

Newmed was created to satisfy the needs of customers who demand safety, reliability and simplicity all in one sterilization equipment. And thanks to experience, technology and research, Newmed has been able to achieve this goal.

Newmed is ISO 9001 and UNI EN ISO 13485 certified



info@newmedautoclaves.co.uk | www.newmedautoclaves.co.uk
Tel: 01600 719 919

easy to use and energy saving

