

Reading IS Thinking

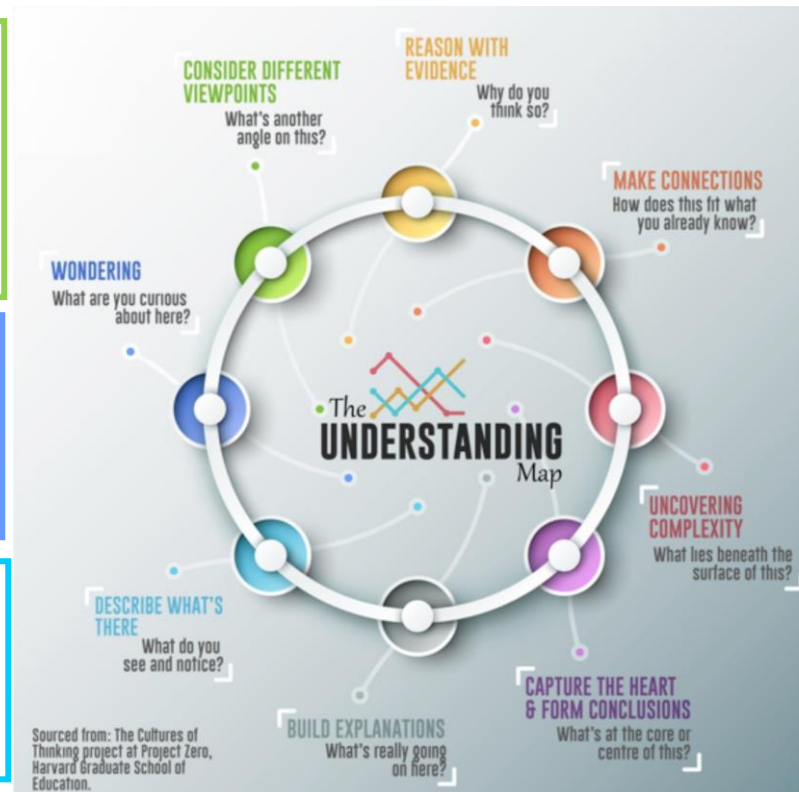
The understanding Map can be used as a teaching and planning tool, for assessing and for reflecting on thinking and comprehension of a range of texts.

REASON WITH EVIDENCE
 Inferring with evidence from the text.
 Predicting based on evidence.

CONSIDER DIFFERENT VIEWPOINTS
 Synthesising information from a range of sources
 Consider authors' perspectives
 Consider characters' motives and actions and reasons for them.

WONDERING
 Think, wonder, question
Questioning
 Who, what, when, where, how might?
 Why?

DESCRIBE WHAT'S THERE
 Literal questioning
 What do you see and hear?
Invitational prompts
 Talk about what you notice.



MAKE CONNECTIONS
 Activating schema
Making Connections
 Text-to-self connections
 Text-to-text connections
 Text-to-world connections

UNCOVERING COMPLEXITY
 Beyond literal questioning to inferential and evaluative questioning
 Understanding author's intent
 Examining author's beliefs, bias and message.

CAPTURE THE HEART & FORM CONCLUSIONS
 Determining Importance
 Summarising
 Identifying the big idea, theme, message of the text

BUILD EXPLANATIONS
 Articulating thinking
 Inferring with evidence
 Determining Importance
 Summarising
 Synthesising