

# Residential Containment & D-CON for Caregiver: Recover At Home (RAH) for Infirmid

Supplies purchased at Home Depot less than \$20.00



- Needed:
- (5) PVC  $\frac{3}{4}$  x 10ft
  - (8) Fitting/Connecters
  - (1) Roll 6 mil Poly
  - (1) PVC cutter
  - (1) Can of Spray Glue
  - (1) Roll of Duct Tape
  - (1) Scissors



# Residential Containment & D-CON for Caregiver: Recover At Home (RAH) for Infirmid

Supplies purchased at Home Depot less than \$20.00

Step 1: measure height of opening to infirmary



Step 2: measure width of opening to infirmary



Step 3: measure piping to opening size



Step 4: mark piping measurements with marker



Step 6: use piping to lay out frame of opening



Step 5: using pliers, cut piping to opening size



Step 7: attached piping corner joints

# Residential Containment & D-CON for Caregiver: Recover At Home (RAH) for Infirmid

Supplies purchased at Home Depot less than \$20.00



Step 8: assemble piping, one side at a time



Step 9: stand frame in front of infirmary opening



Step 10: lay out poly



Roll 6 mil poly at least 36 inches past bottom



# Residential Containment & D-CON for Caregiver: Recover At Home (RAH) for Infirmid

Supplies purchased at Home Depot less than \$20.00

Step 11: Use tape to attach  
to all sides of frame



Step 13: stand up and place  
aside



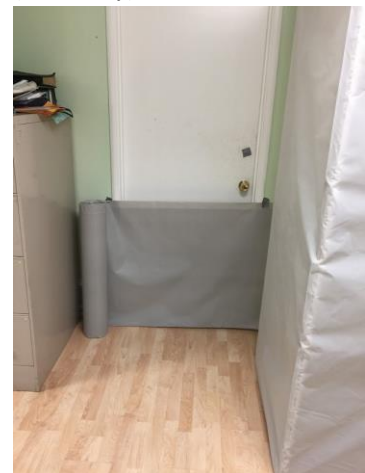
Step 12: spray bottom with  
spray glue and secure with  
tape.



Step 14: use remaining tarp  
to cover opening to infirmary  
(doorway)

Rotate cube while extending  
poly.

Gift-wrapped bottom and  
top



Lay out poly for door barrier

# Residential Containment & D-CON for Caregiver: Recover At Home (RAH) for Infirm

Supplies purchased at Home Depot less than \$20.00



Step 15: secure poly over opening with duct tape



Step 17: place d-con in front of opening, spray glue dcon and barrier

Step 18: mark an opening in d-con container with duct tape



Step 19: cut an opening in the taped marking



Use Duct tape to seal poly to door frame



Push cube to door barrier and tape seal barrier to dcon



# Residential Containment & D-CON for Caregiver: Recover At Home (RAH) for Infirm

Supplies purchased at Home Depot less than \$20.00



Step 20: Step inside dcon and cut door barrier



Cut a Seal flap for dcon



Step 23: place a warning sticker on the back of the d-con container

