

ESTILL COUNTYU CONSERVAITON DISRICT'S

LILY MOUNTAIN NATURE PRESERVE:

Lily Mountain, a 564 acre natural area in Estill County, is a local treasure and is geologically significant as it is one of the first mountains to divide the Bluegrass Prairie and the Cumberland Plateau. It is located just off Little Rock Road and Highway 499 near the Panola area of Estill and Madison Counties. It is primarily wooded but also has a few acres of grassland. There is at least one cave present on the property and another one rumored. There are a handful of intermittent and ephemeral streams on the property with one established pond and two wetland areas. One significant archaeological area dating to the turn of the century and a variety of flora and fauna await the intrepid explorer. The Estill County Conservation District is proud to have the opportunity to shepherd the preservation of this incredible natural resource.

Our goal is to protect and restore the land with its natural resources while providing for appropriate public use. This will include recreational uses such as hiking trails that vary in difficulty from easy to challenge, enhancement of wetland areas, areas for bird watching, other nature study activities and the promotion of nature photography and art opportunities such as drawing and painting of, and in communion with nature. The District will implement land restoration projects such as forest improvement, invasive species removal and native plan establishment. Educational programs on land management, wildlife management and restoration, as well as studies on the historical and cultural resources would be offered by the Conservation District as partners. The area will also be made available to small groups for environmental education study and to students from nearby universities and colleges to conduct research.



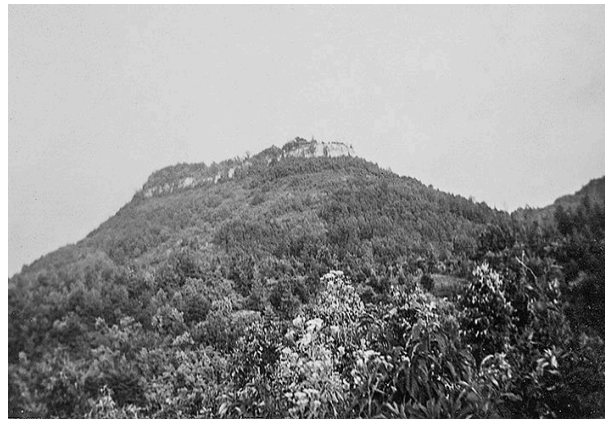
*View from the point of Lily Mountain toward Kingston/Berea.



*View from the point of Lily Mountain looking toward Richmond (EKU Campus)



*View of Lily Mountain from road



*Lily Mountain circa 1950-60's
(Photo provided by Dave Luzader)



*Frozen Wetland Pond